

Mosaico XL+

600W IP66 zoomable LED image projector with CMY and framing shutter

ORDER CODE: **MOSAICOXLPLUS**



Mosaico XL+ is an extremely powerful outdoor LED image projector for long-range projection of textures, images and logos onto buildings and landscapes. Built in a durable IP66 die-cast housing, the **Mosaico XL+** offers a phenomenal output of 23'600 lumens and an extensive set of features including linear CMY+CTO colour mixing system and profile to precisely shape the projection area. The exceptional zoom ranges from 6° to 50° allowing this fixture to be installed at any distance making it versatile in both near-field and long-throw installations, awesome for static and animated facade building lighting.

MAIN FEATURES

- IP66 allowing long-lasting installation with minimal maintenance
- Equipped with 6° - 50° linear zoom system to for both near and long throw installation
- 600W White LED engine with 6.300 K CT delivering 23'600 lumens output
- Extensive feature set including CMY and linear CTO, shutter frame and animation wheel

TECHNICAL SPECIFICATION

LIGHT SOURCE

- Source: 600W high-power white LED
- CCT: 6.300
- Luminous flux: (6,8°) 17'404 lm - (52,1°) 23'570 lm @Full
- Lux: (6,8°) 59'962 lx - (52,1°) 1'454lx @5 m full
- Source life expectancy: > 20.000 h

OPTICS

- Zoom range: 6,8° - 52,1° motorised linear zoom
- Lens diameter: 135mm / 5.31"
- Lens type: high-quality glass lens optics
- Focus: motorised

COLOUR SYSTEM

- Colour mixing: linear CMY
- CCT: linear CTO correction 3.000 K ~ 6.000 K
- Colour wheel: open + 6 interchangeable colour filters

DYNAMIC EFFECTS

- Shutter system: 4 shutter blades with position and ±30° angle adjustment, ±45° rotation of the complete framing system
- Animation wheel: animation wheel with CW and CCW rotation
- Rotating gobos: 7 rotating gobos + open, interchangeable, indexing
- Gobo size (BW): outer: 26,9 mm - image: 20,5 mm
- Gobo size (Color): outer: 26,9 mm - image: 20,5 mm
- Circular prism: 4f with bi-directional rotation, indexing
- Frost: dual frost filter, soft-edge and heavy
- Iris: 5 ~ 100% motorised iris

BODY

- Hardware on-board: anchor points on the front for accessory mounting
- Body: sturdy die-cast aluminium body, scratch resistant paint C5M (as standard)
- Body colour: RAL 9006
- Other: inspectable cover window for gobos replacement and maintenance and record scenes and create chases and shows throughout these scenes

CONTROL

- Protocols: DMX512, RDM, CRMX

ACCESSORIES & RELATED PRODUCTS

- AETHERBOX IP65 1 universe CRMX transceiver, DMX and Ethernet protocols, Wi-Fi, Bluetooth and battery ready
- AETHERBOXLITE 1 Universe CRMX Wireless Transceiver
- LRLUNA Single Universe DMX transceiver with Bluetooth
- RSR0670B Steel security cable for hanging bodies, inox steel shackle, L=60 cm, black
- C6002B Slim aluminum clamp, 200kg loading, 48-51mm tubes, M10 bolt, Black
- AWEXDC1221ADP Signal adapter kit from AWEXDC1 series to AWEXDC2 series and vice versa
- MOSBRACK Bracket for MOSAICO series for wall mounting and suspension on poles

- Stand Alone: Stand Alone programmer and playback
- DMX channels: 28 / 30 / 35 / 44channel
- Wireless Control: Included LumenRadio Timo Fx DMX/RDM receiver compatible with CRMX (Lumen Radio) and W-DMX (Wireless DMX)
- RDM: RDM for remote monitoring and settings
- Display: black OLED touch display
- Firmware upgrade: via DMX with UPBOXPRO/UPBOX1 (USB-DMX interface not included)
- Master/Slave: for synchronised operation of more units linked in a chain

ELECTRONICS

- Dimmer: linear 0 ~ 100% electronic dimmer
- Dimmer curves: 4 selectable dimming modes available
- Strobe / shutter: 1 - 30 Hz, electronic
- Display battery: self-charging battery backup
- Operating temperature: -20° C / +45° C (-4° F / +113° F) Ta
- LED Control: flicker free operation
- Selectable PWM: 600 ~ 40.000 Hz

ELECTRICAL

- Mains power supply: 100-240V - 50/60Hz
- Max power consumption: 680W
- Standby power: 58,7 W
- Output (at 230V): 4 units on a single power line
- Power factor: >0,96

PHYSICAL

- IP rating: IP66 for outdoor installations
- IK rating: 09
- Cooling: combination of heat pipe cooling system and low noise fan
- Suspension and fixing: bracket for hanging and positioning
- Adaptors: XLR and BARE END 16A adaptors included
- Signal connection: 1,8 m moulded IP signal IN/OUT connectors
- Power connection: 1,8 m moulded IP power IN/OUT connectors
- Dimensions (WxHxD): 403x462x565mm / 15.87"x18.19"x22.24"
- Weight: 35,5kg / 78.26lbs

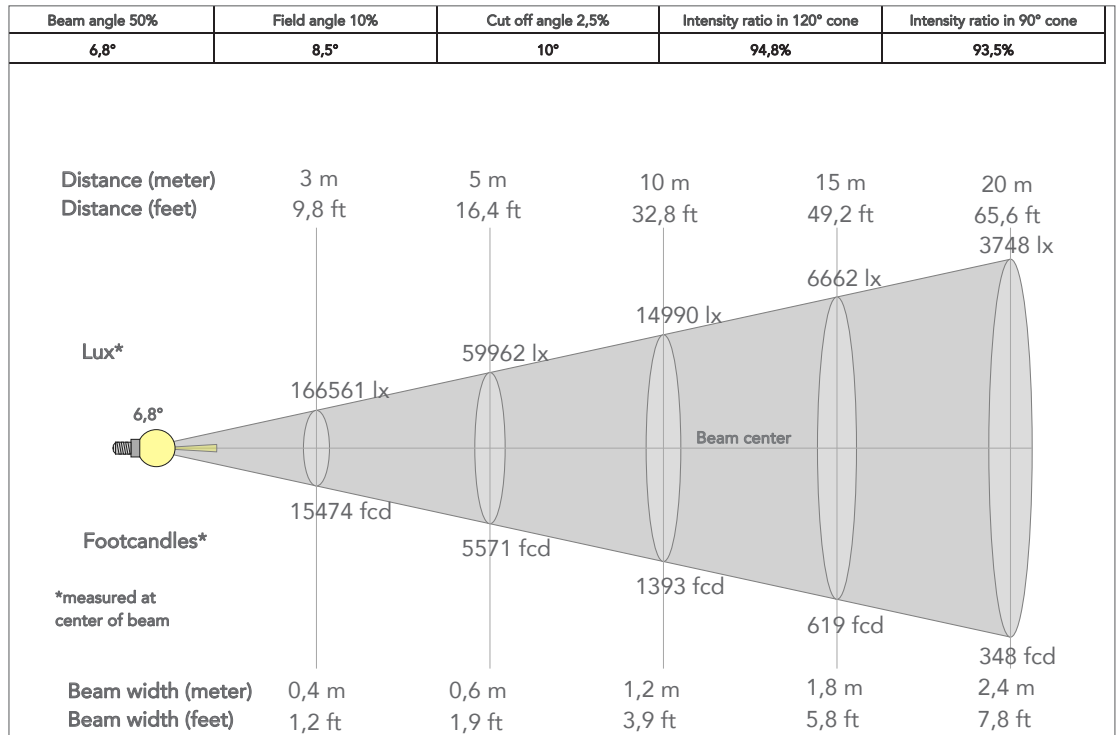
CERTIFICATIONS / APPROVALS

- Certifications / Approvals: CE, RCM

- AWEXAC12ADP Power adapter from AWEXAC1 cable series to AWEXAC2 cable series
- GBVMAP001 Gobo Mapping, F size, black and white (gobo holder included)
- AWEXAC1L03/05 10/20 IP67 power extension cable for outdoor architectural projectors, L.03/05/10/20 m
- AWEXDC1L03/05 10/20 IP67 DMX extension cable for outdoor architectural projectors, L.03/05/10/20 m
- UPBOXPRO Firmware uploader kit, USB IN, 5-pin XLR DMX OUT connector

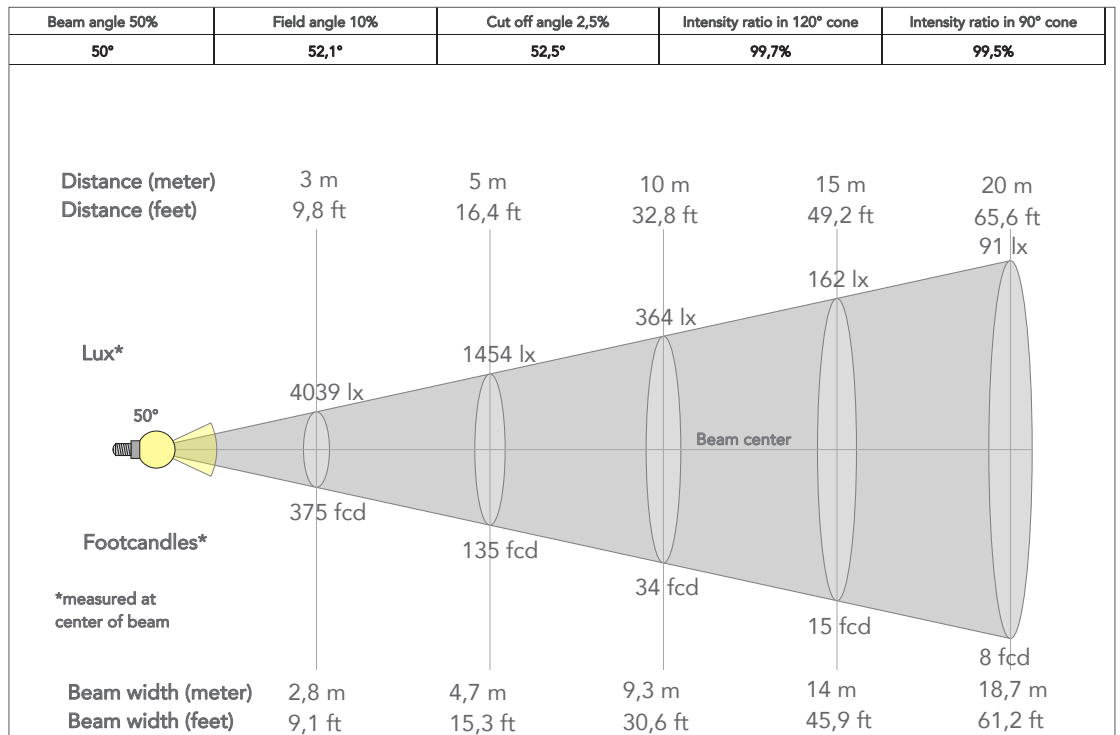
PRESET FULL ON

Beam angle 50%: 5,8°

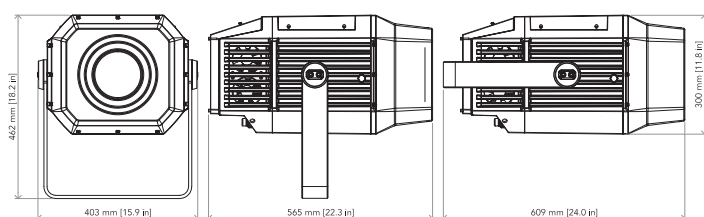


PRESET FULL ON

Beam angle 50%: 51,7°



TECHNICAL DRAWINGS



CERTIFICATIONS / APPROVALS



Visit our website for specifications and tech documentations