

Photometric Test Report



EclProfile FWHPVW

450W high quality VariableWhite LED
ellipsoidal, compatible with PRL and PRLZ lenses
(ECLPRL50BK)

CONTENTS

Table of contents	2
Testing process	3
PRL 50° Lens:	
Full On	4
Warm White	9
Cold White	14
2800K	19
3200K	24
4000K	29
5600K	34
6000K	39

TESTING PROCESS

Prolights has its own optical testing laboratory in order to provide accurate photometric reports for its lighting products. The testing laboratory contains certain variety of precise lighting measurement systems that ensure an optimal reading of all the characteristic parameters of the lighting devices. All measurements are made at a controlled room temperature of 20°C without any external light sources. This photometric report is obtained through the data measured by a high precision measurement system and analyzed by a dedicate software.

Prolights measurement instrument

Prolights measurement instrument is a complete measurement system for any light source. It's equipped with two-axis goniometer, that enables to measure the full 3D distribution field of the light source. This instrument measures the light intensity, the beam angle and the most significative colors parameters, like color temperature, spectral distribution, CRI, CQS, TM-30 with a very high accuracy rate.

Please Note: All measurements are made with light source at operating temperature. Before starting the measurement, the instrument analyzes the process of the light source during the heating phase. The measuring process of all the parameters begins only when the light emission is stable, that is with a variation of less than 0.5% in a 15 minutes time frame.

Prolights measurement software

The software provides user friendly interface for the operator who does the measurements, and it also analyzes and processes all the collected data by the instrument. With this software it is possible to see the measured data in real-time and it is possible to examine all the measured data and graphics afterwards as well. All information is collected in a specific Prolights template, and the software creates also IES and LDT files, which are widely used to transfer the photometric data, and to develop lighting system.

Additionally, the fixtures are rechecked using various hand-held instruments like Sekonic C-700 and Gossen Mavospec Base, this is done to ensure, that the data in the photometric report are as accurate as possible.



Total lumen output:

14196 lm

Peak candela output:

29005 cd

Light quality:

CRI: 97,2

Color temperature:

4148 K

PRODUCT NAME:

ECLFWHPVW

MEASURAMENT CONDITIONS:

Beam angle:

PRL50

Target:

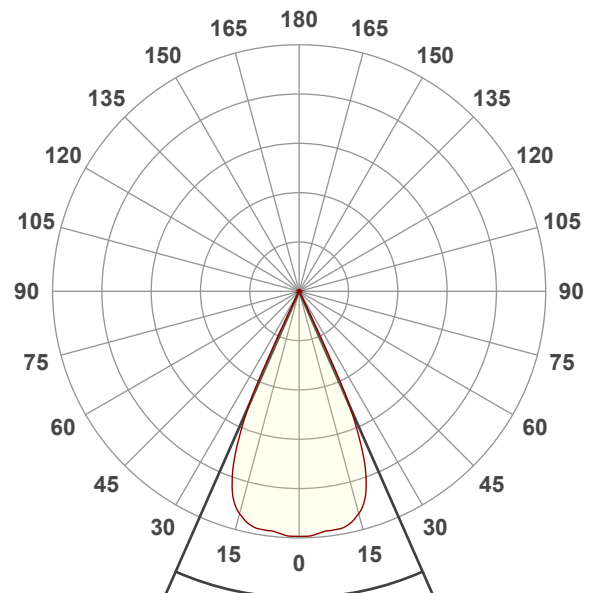
Full On

Operator:

Giuseppe della Peruta

Date and time:

07/01/2026 12:55:45

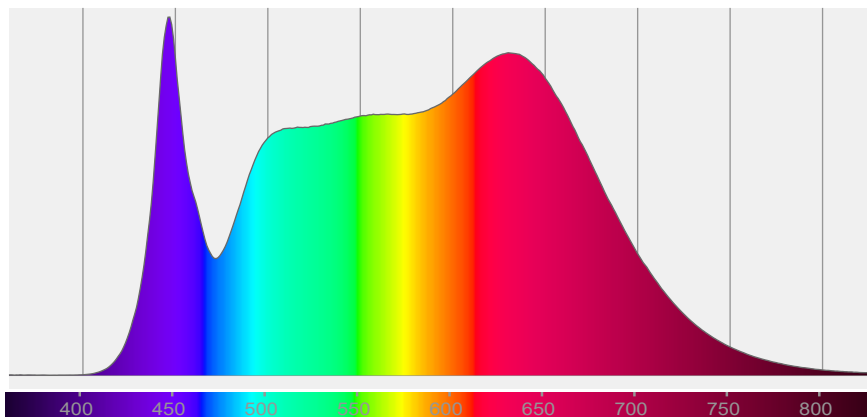


Beam angle 50%: 47,5°

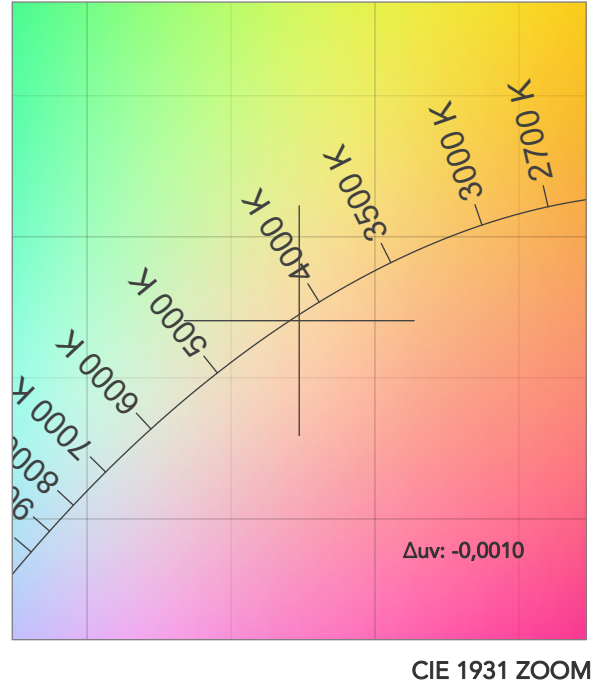
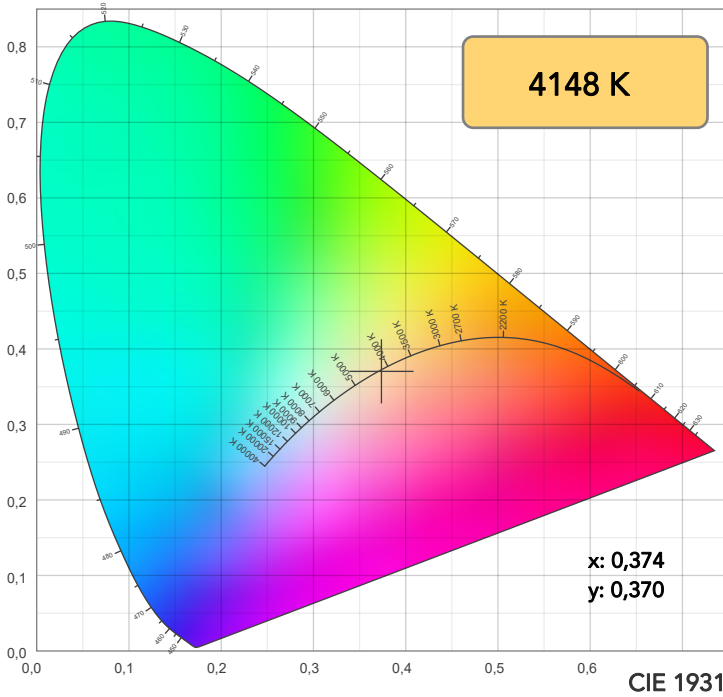
Field angle 10%: 51,7°

Cut off angle 2.5%: 52,6°

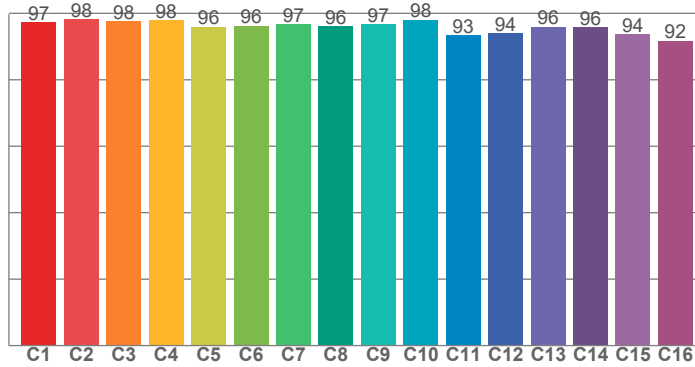
Spectra



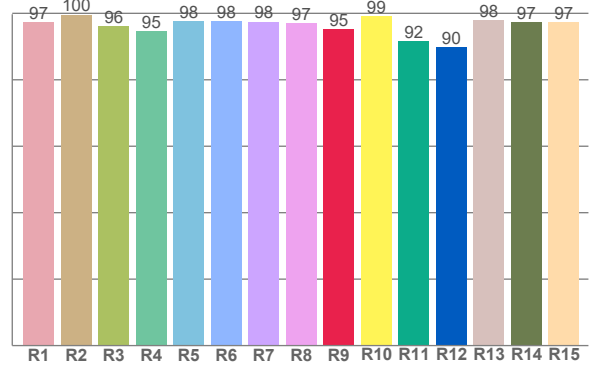
COLOR DETAILS



TM30: 96,0



CRI: 97,2 (R1-R8)



CRI R values, only R1-R8 are used to calculate final CRI value

R1	R2	R3	R4	R5	R6	R7	R8	R9	R10	R11	R12	R13	R14	R15
97,3	99,6	96,0	94,5	97,6	97,7	97,5	97,0	95,1	99,2	91,7	89,8	98,0	97,4	97,4

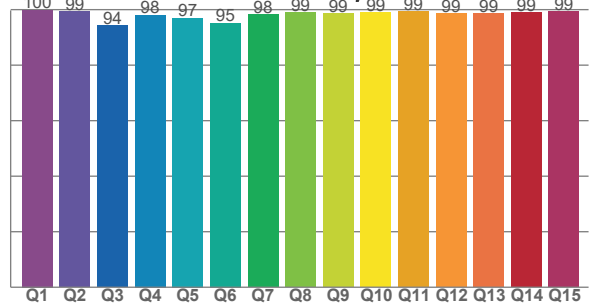
TM30 C values, 16 binned values out of total of 99 C values

C1	C2	C3	C4	C5	C6	C7	C8	C9	C10	C11	C12	C13	C14	C15	C16
97,3	98,1	97,7	98,0	95,9	96,2	96,7	96,1	96,7	98,0	93,4	93,9	95,9	95,9	93,8	91,7

CQS Q values

Q1	Q2	Q3	Q4	Q5	Q6	Q7	Q8	Q9	Q10	Q11	Q12	Q13	Q14	Q15
99,9	99,3	94,3	98,1	97,1	95,1	98,2	98,9	98,5	99,0	99,3	98,6	98,6	99,0	99,2

CQS: 97,6



COLOR PARAMETERS

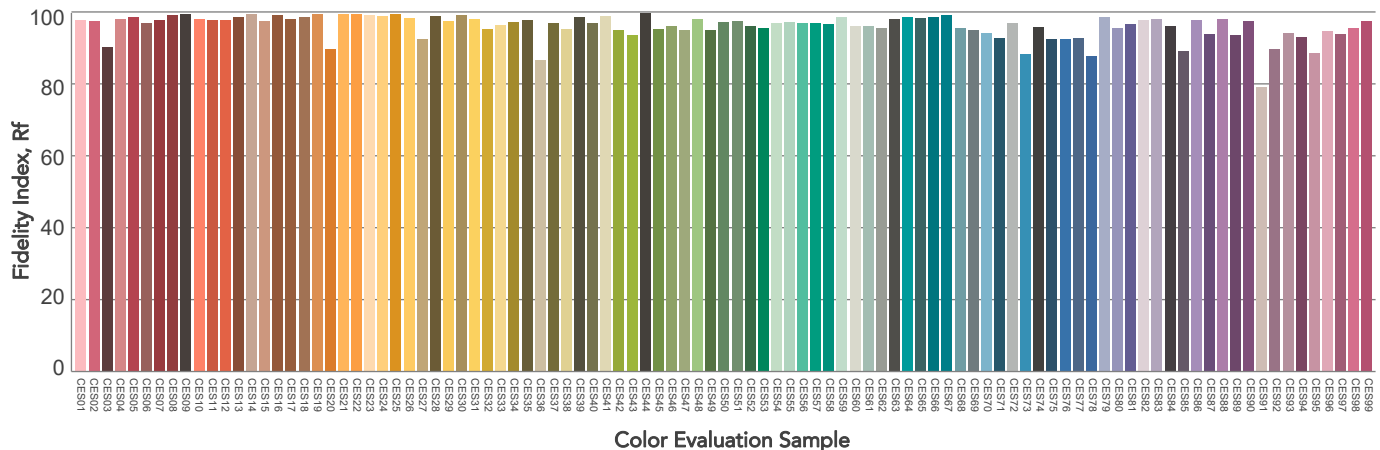
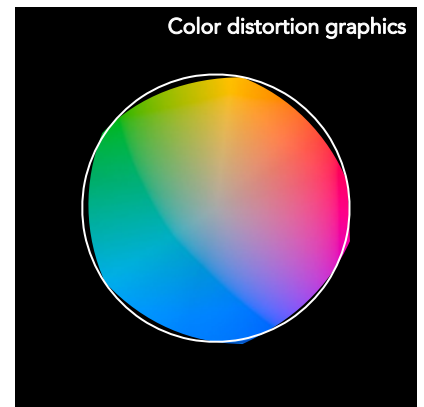
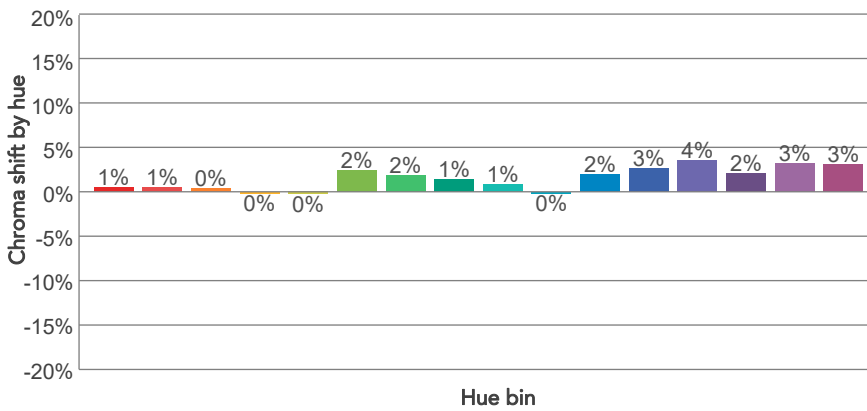
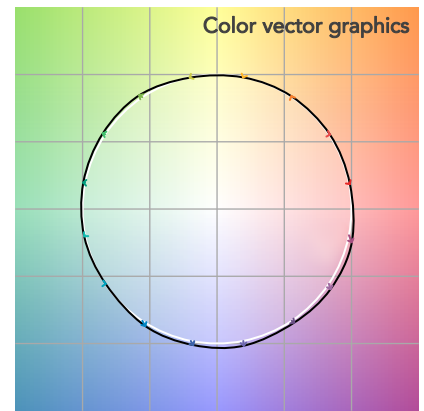
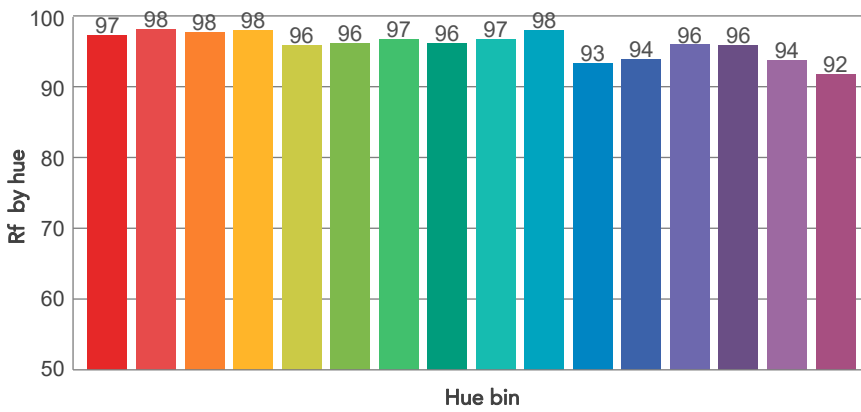
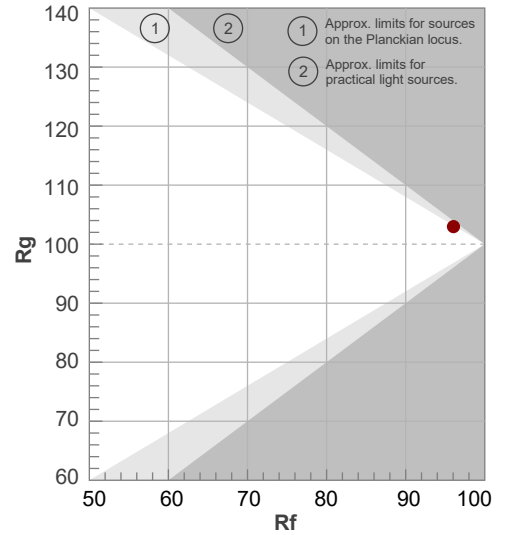
Color temperature	Color rendering index	Red component	Color fidelity	Color gamut	Color quality scale	Television lighting index	Color coordinate cie 1931	Color coordinate cie 1931	Color deviation from black body
CCT	CRI	CRI R9	TM30 Rf	TM30 Rg	CQS	TLCI	x	y	Δuv
4148 K	97,2	95,1	96,0	103,0	97,6	98	0,374	0,370	-0,0010

TM30 DETAILS

Rf 96,0
Fidelity index Rf

Rg 103,0
Gammut index

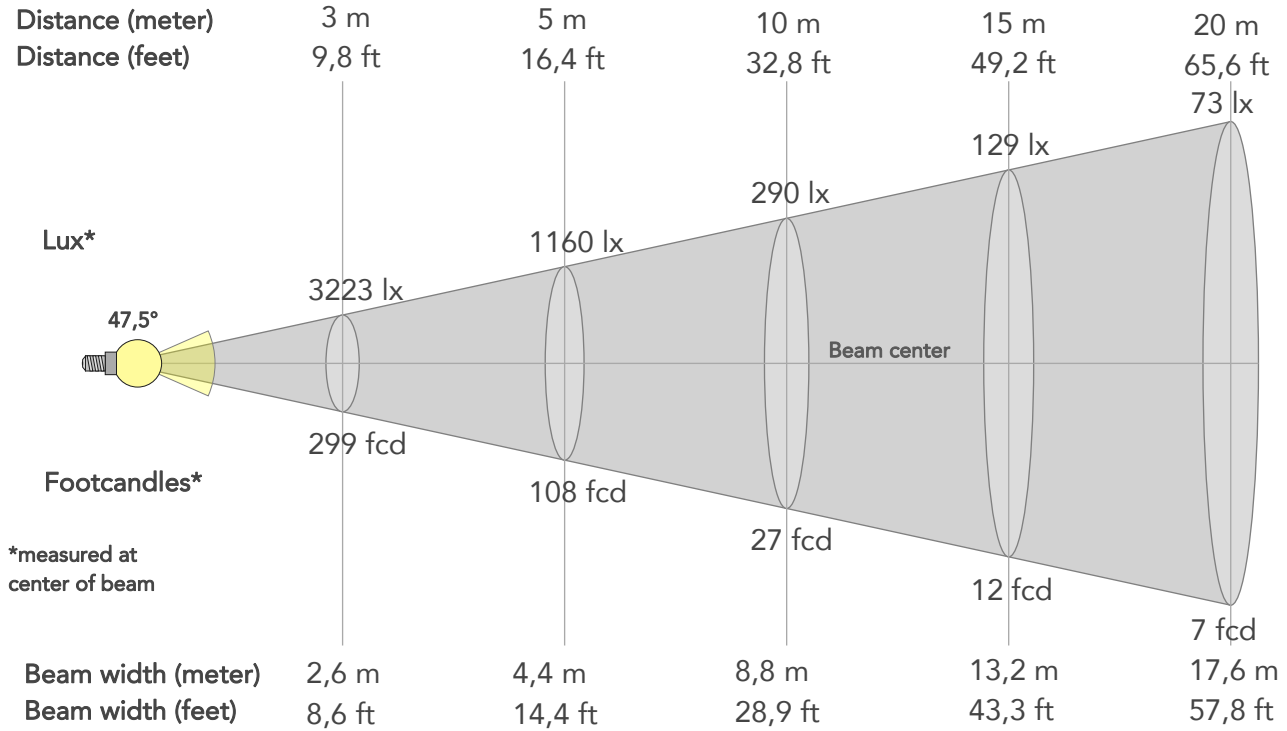
Hue Bin	R _f	Graphic shifts (%)	
		Chroma	Hue
1	97	1%	-1%
2	98	1%	-1%
3	98	0%	1%
4	98	0%	0%
5	96	0%	1%
6	96	2%	1%
7	97	2%	0%
8	96	1%	0%
9	97	1%	1%
10	98	0%	0%
11	93	2%	4%
12	94	3%	2%
13	96	4%	0%
14	96	2%	1%
15	94	3%	-3%
16	92	3%	-5%



BEAM DETAILS



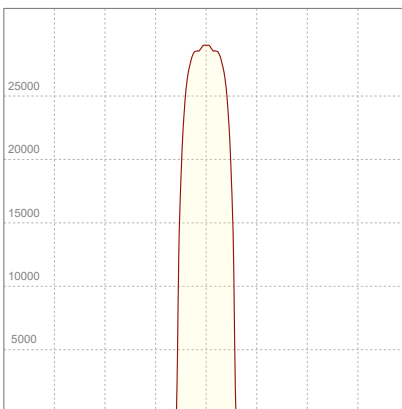
Beam angle 50%	Field angle 10%	Cut off angle 2,5%	Intensity ratio in 120° cone	Intensity ratio in 90° cone
47,5°	51,7°	52,6°	99,8%	99,7%



BEAM INTENSITIES AND WIDTHS

Distance	1m	2m	3m	4m	5m	7,5m	10m	15m	20m	25m	30m	40m	50m
Distance	3,3ft	6,6ft	9,8ft	13,1ft	16,4ft	24,6ft	32,8ft	49,2ft	65,6ft	82ft	98,4ft	131,2ft	164ft
Lux	29005lx	7251lx	3223lx	1813lx	1160lx	516lx	290lx	129lx	73lx	46lx	32lx	18lx	12lx
Footcand.	2695fcd	674fcd	299fcd	168fcd	108fcd	48fcd	27fcd	12fcd	7fcd	4fcd	3fcd	2fcd	1fcd
Beam wid.	0,9m	1,8m	2,6m	3,5m	4,4m	6,6m	8,8m	13,2m	17,6m	22m	26,4m	35,2m	44m
Beam wid.	2,9ft	5,8ft	8,6ft	11,5ft	14,4ft	21,7ft	28,9ft	43,3ft	57,8ft	72,2ft	86,7ft	115,6ft	144,5ft

LINEAR DISTRIBUTION DIAGRAM

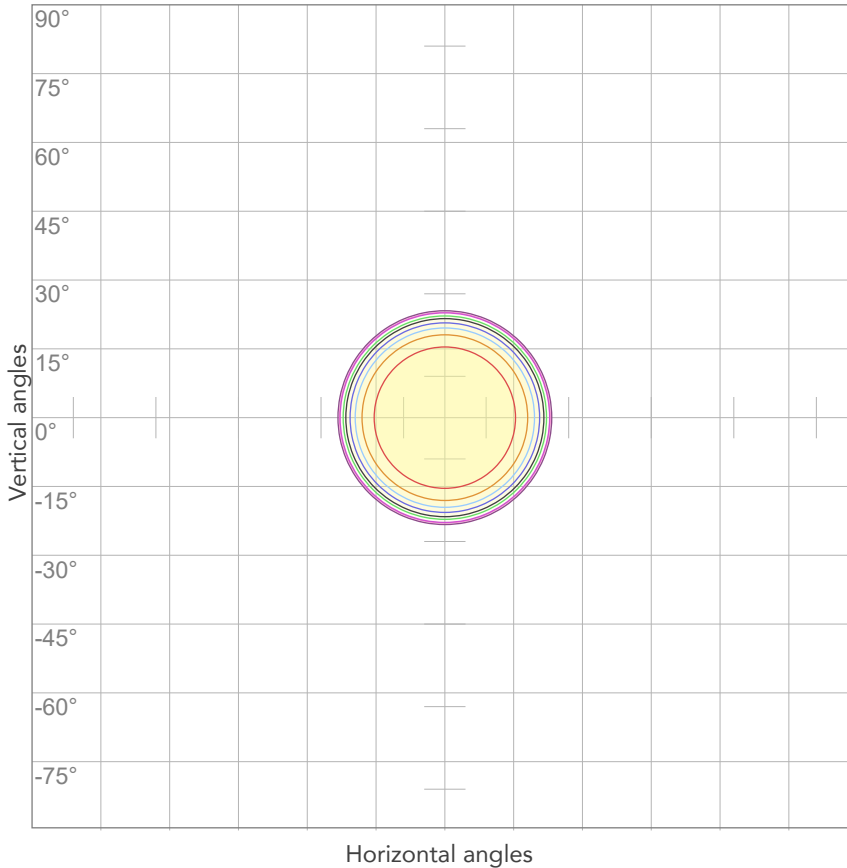


ELECTRICAL SPECIFICATIONS

Input voltage	Input current	Input power	Power FC	Efficiency
226V	2,01A	441,3W	0,97	32lm/W

ISO DIAGRAMS

ISO CANDELA DIAGRAM



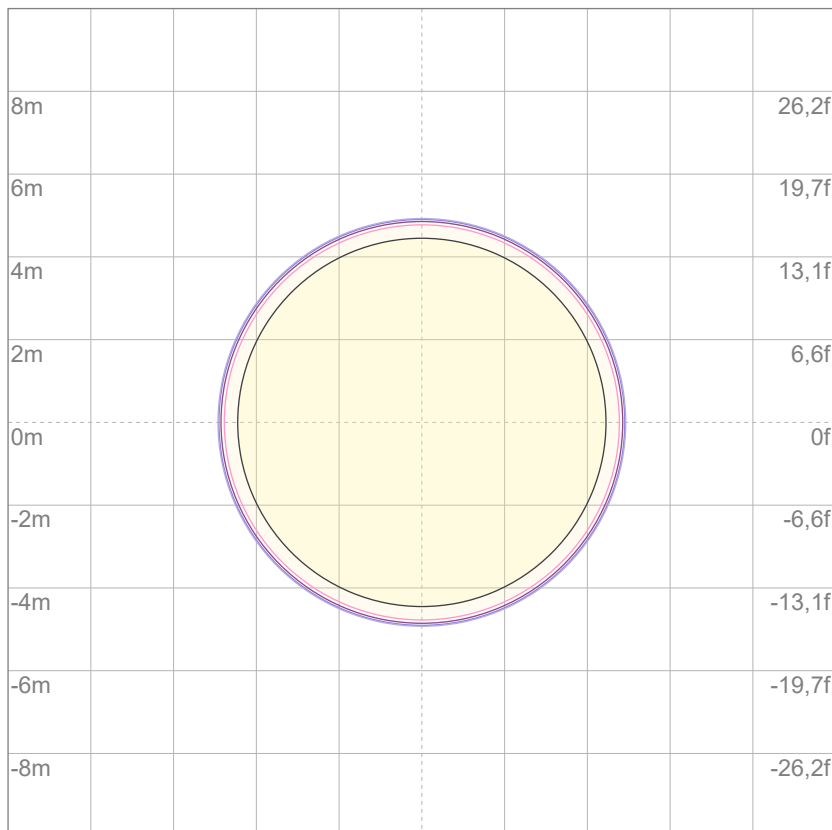
10%	2900 cd
20%	5801 cd
30%	8701 cd
40%	11602 cd
50%	14502 cd
60%	17403 cd
70%	20303 cd
80%	23204 cd

Conditions:

Number of c-planes: 2

Candela at center: 29005 cd

ISO LUX DIAGRAM



Mounting height: 10 meters (33 feet)

3%	8,70 lx
5%	14,5 lx
10%	29,0 lx
30%	87,0 lx
50%	145 lx

Conditions:

Number of c-planes: 2

Lux at center: 290 lx

Lux distribution on a surface when lamp is mounted at 10 meters from the surface.



Total lumen output:

10694 lm

Peak candela output:

21731 cd

Light quality:

CRI: 97,2

Color temperature:

2588 K

PRODUCT NAME:

ECLFWHPVW

MEASURAMENT CONDITIONS:

Beam angle:

PRL50

Target:

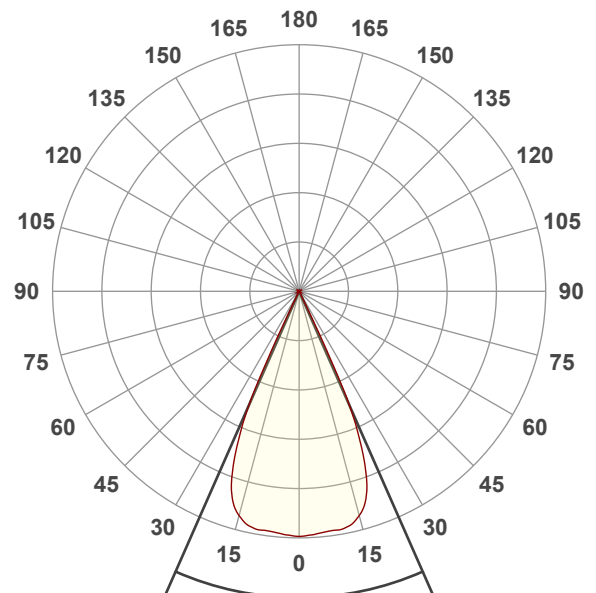
Warm White

Operator:

Giuseppe della Peruta

Date and time:

07/01/2026 13:00:23

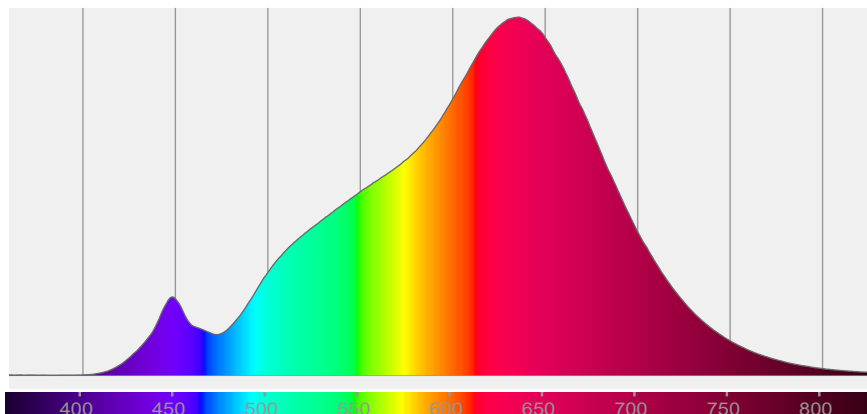


Beam angle 50%: 47,6°

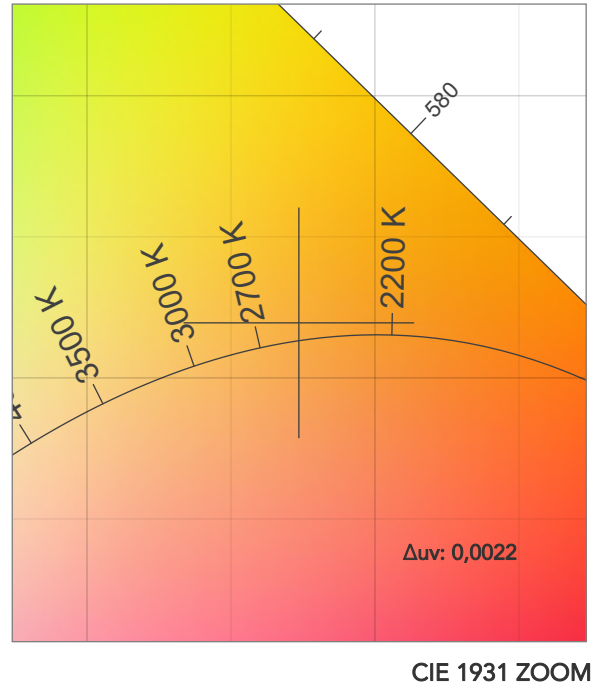
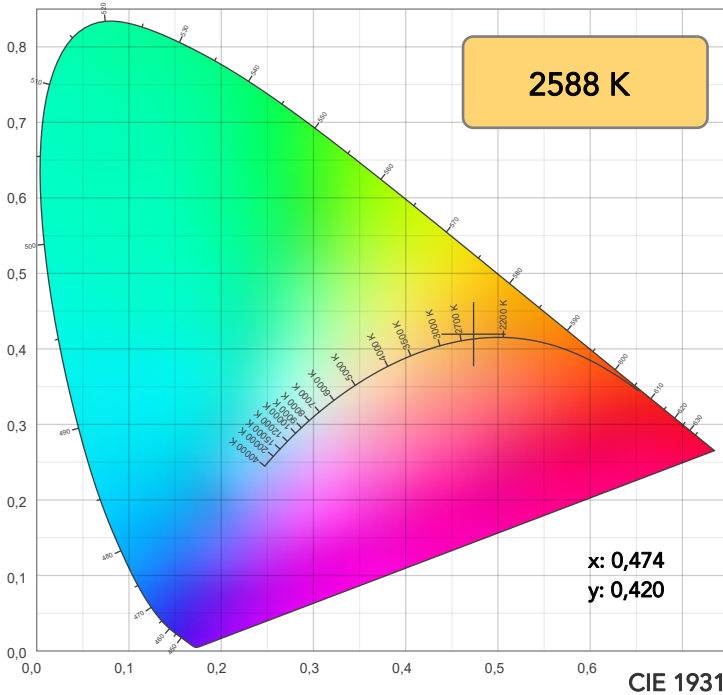
Field angle 10%: 51,7°

Cut off angle 2.5%: 52,5°

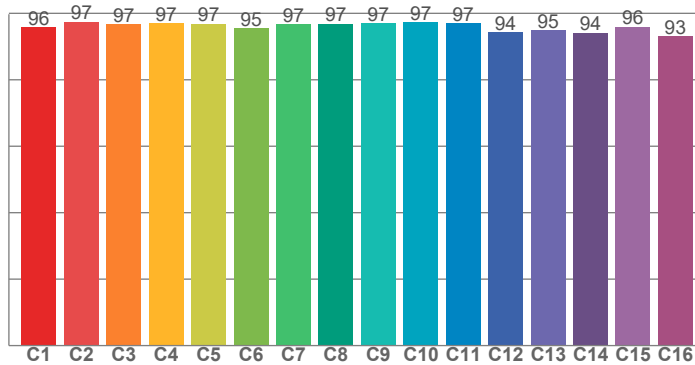
Spectra



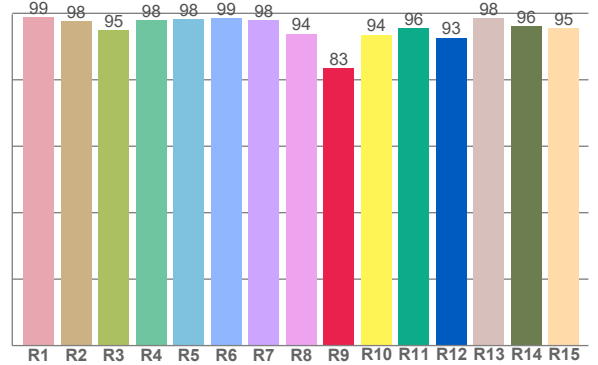
COLOR DETAILS



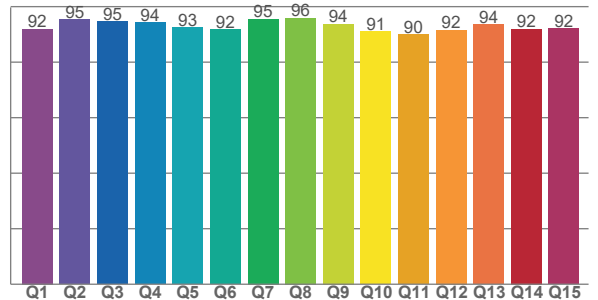
TM30: 96,1



CRI: 97,2 (R1-R8)



CQS: 92,7



CRI R values, only R1-R8 are used to calculate final CRI value

R1	R2	R3	R4	R5	R6	R7	R8	R9	R10	R11	R12	R13	R14	R15
98,8	97,7	94,9	97,8	98,3	98,5	98,0	93,9	83,4	93,5	95,5	92,7	98,5	96,0	95,4

TM30 C values, 16 binned values out of total of 99 C values

C1	C2	C3	C4	C5	C6	C7	C8	C9	C10	C11	C12	C13	C14	C15	C16
95,8	97,4	96,7	96,9	96,9	95,5	96,7	96,9	97,1	97,3	97,0	94,2	94,9	94,2	95,9	93,1

CQS Q values

Q1	Q2	Q3	Q4	Q5	Q6	Q7	Q8	Q9	Q10	Q11	Q12	Q13	Q14	Q15
91,9	95,3	94,7	94,4	92,5	91,8	95,5	95,8	93,7	91,1	89,9	91,5	93,6	91,9	92,2

COLOR PARAMETERS

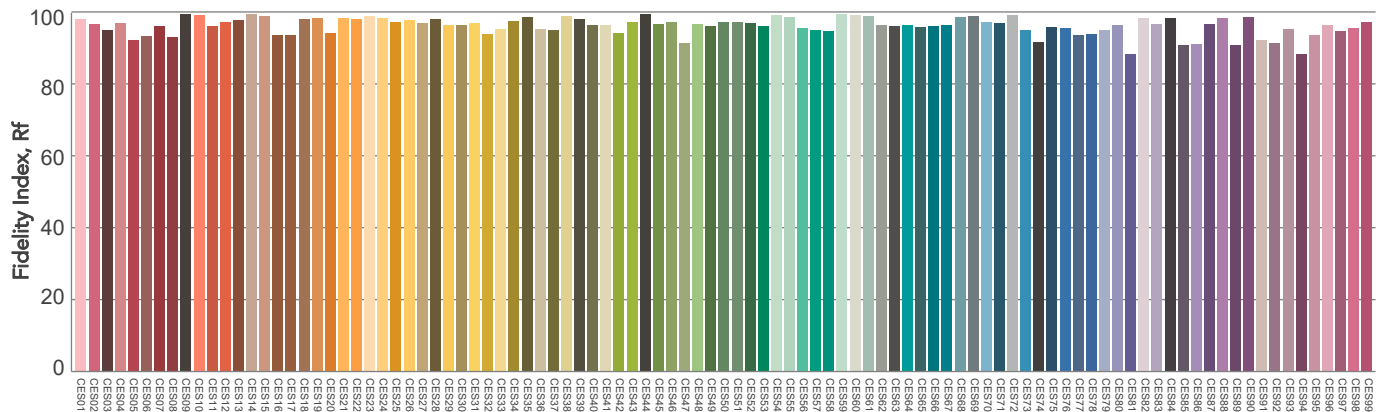
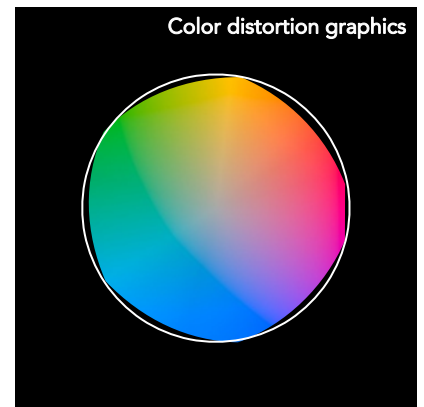
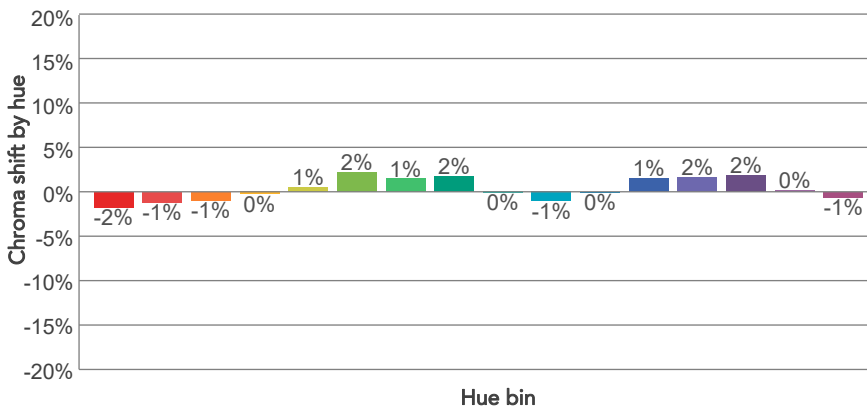
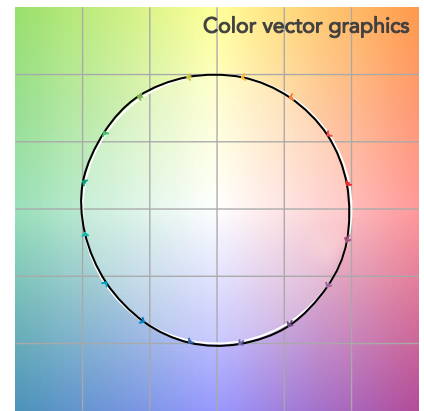
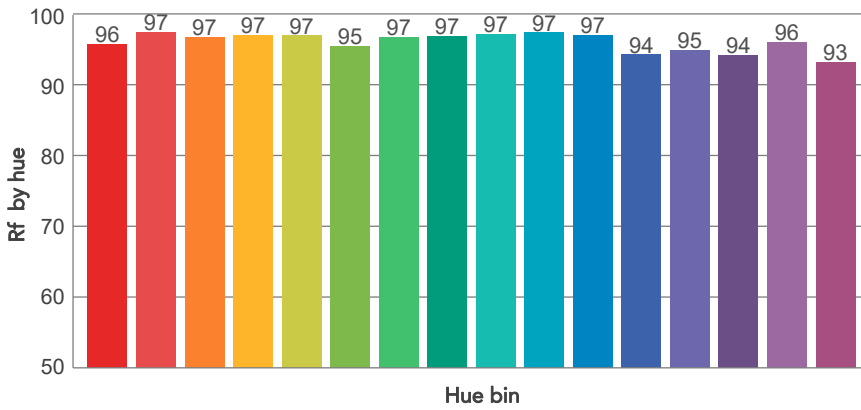
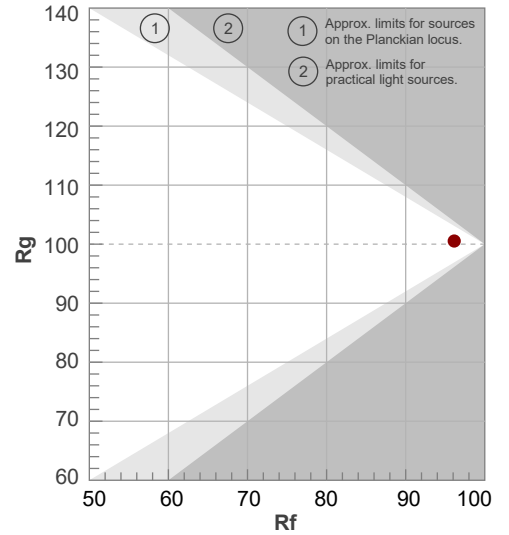
Color temperature	Color rendering index	Red component	Color fidelity	Color gamut	Color quality scale	Television lighting index	Color coordinate cie 1931	Color coordinate cie 1931	Color deviation from black body
CCT	CRI	CRI R9	TM30 Rf	TM30 Rg	CQS	TLCI	x	y	Δuv
2588 K	97,2	83,4	96,1	100,5	92,7	96	0,474	0,420	0,0022

TM30 DETAILS

Rf 96,1
Fidelity index Rf

Rg 100,5
Gammut index

Hue Bin	R _f	Graphic shifts (%)	
		Chroma	Hue
1	96	-2%	-1%
2	97	-1%	0%
3	97	-1%	1%
4	97	0%	1%
5	97	1%	3%
6	95	2%	2%
7	97	1%	-1%
8	97	2%	-1%
9	97	0%	-2%
10	97	-1%	0%
11	97	0%	1%
12	94	1%	-1%
13	95	2%	-4%
14	94	2%	-4%
15	96	0%	-2%
16	93	-1%	-5%

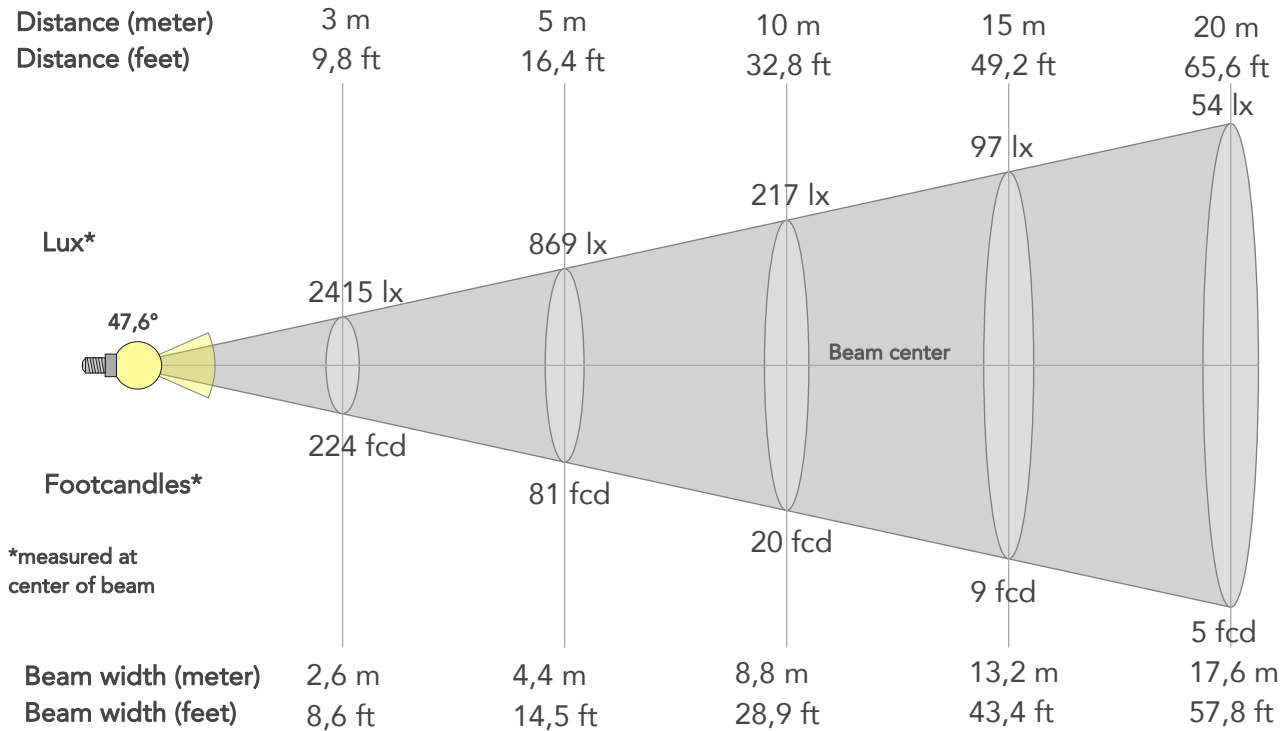


Color Evaluation Sample

BEAM DETAILS



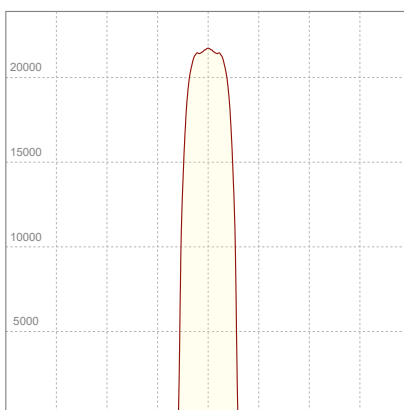
Beam angle 50%	Field angle 10%	Cut off angle 2,5%	Intensity ratio in 120° cone	Intensity ratio in 90° cone
47,6°	51,7°	52,5°	99,9%	99,8%



BEAM INTENSITIES AND WIDTHS

Distance	1m	2m	3m	4m	5m	7,5m	10m	15m	20m	25m	30m	40m	50m
Distance	3,3ft	6,6ft	9,8ft	13,1ft	16,4ft	24,6ft	32,8ft	49,2ft	65,6ft	82ft	98,4ft	131,2ft	164ft
Lux	21731lx	5433lx	2415lx	1358lx	869lx	386lx	217lx	97lx	54lx	35lx	24lx	14lx	9lx
Footcand.	2019fcd	505fcd	224fcd	126fcd	81fcd	36fcd	20fcd	9fcd	5fcd	3fcd	2fcd	1fcd	1fcd
Beam wid.	0,9m	1,8m	2,6m	3,5m	4,4m	6,6m	8,8m	13,2m	17,6m	22m	26,4m	35,3m	44,1m
Beam wid.	2,9ft	5,8ft	8,6ft	11,5ft	14,5ft	21,7ft	28,9ft	43,4ft	57,8ft	72,3ft	86,7ft	115,7ft	144,6ft

LINEAR DISTRIBUTION DIAGRAM

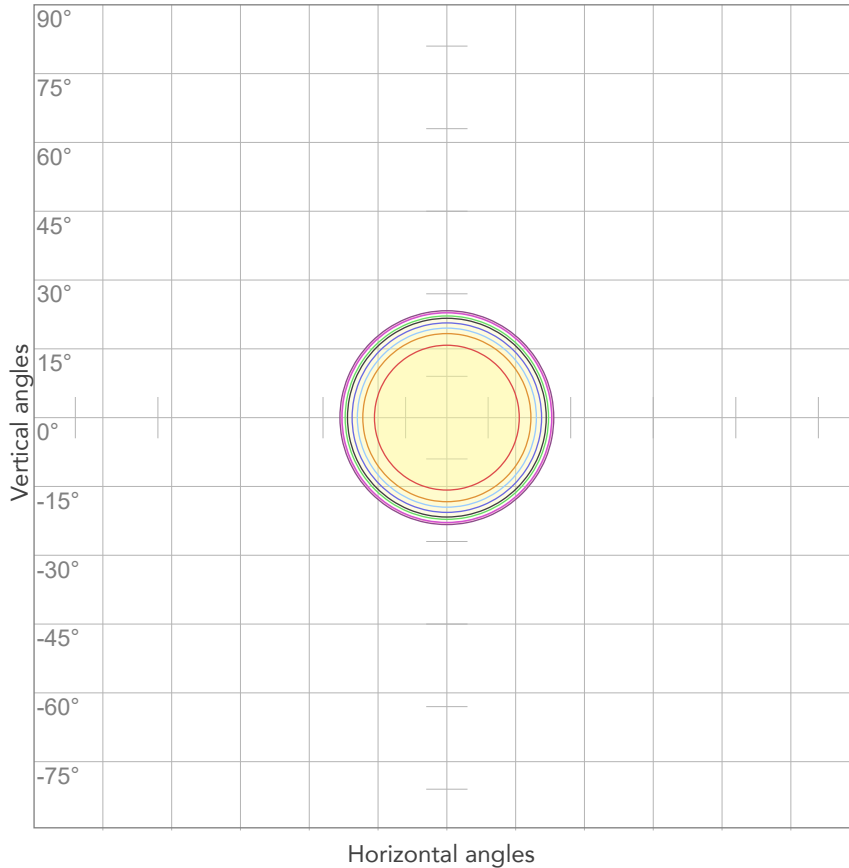


ELECTRICAL SPECIFICATIONS

Input voltage	Input current	Input power	Power FC	Efficiency
226V	1,75A	383,1W	0,97	28lm/W

ISO DIAGRAMS

ISO CANDELA DIAGRAM



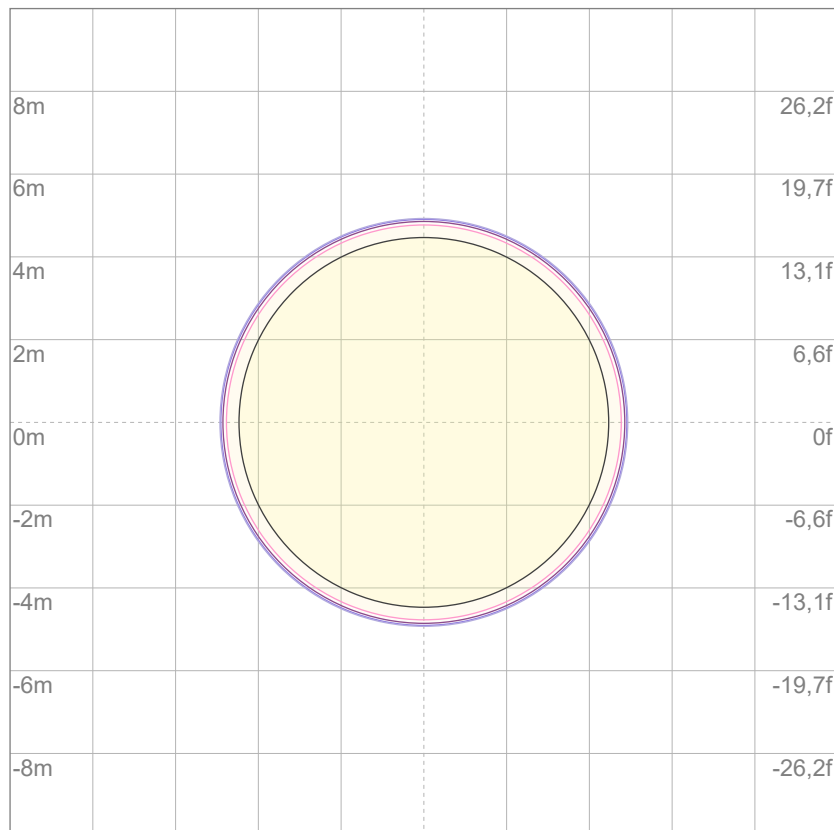
10%	2173 cd
20%	4346 cd
30%	6519 cd
40%	8692 cd
50%	10865 cd
60%	13038 cd
70%	15211 cd
80%	17384 cd

Conditions:

Number of c-planes: 2

Candela at center: 21731 cd

ISO LUX DIAGRAM



3%	6,52 lx
5%	10,9 lx
10%	21,7 lx
30%	65,2 lx
50%	109 lx

Conditions:

Number of c-planes: 2

Lux at center: 217 lx

Lux distribution on a surface when lamp is mounted at 10 meters from the surface.



Total lumen output:

13577 lm

Peak candela output:

27936 cd

Light quality:

CRI: 95,4

Color temperature:

6580 K

PRODUCT NAME:

ECLFWHPVW

MEASURAMENT CONDITIONS:

Beam angle:

PRL50

Target:

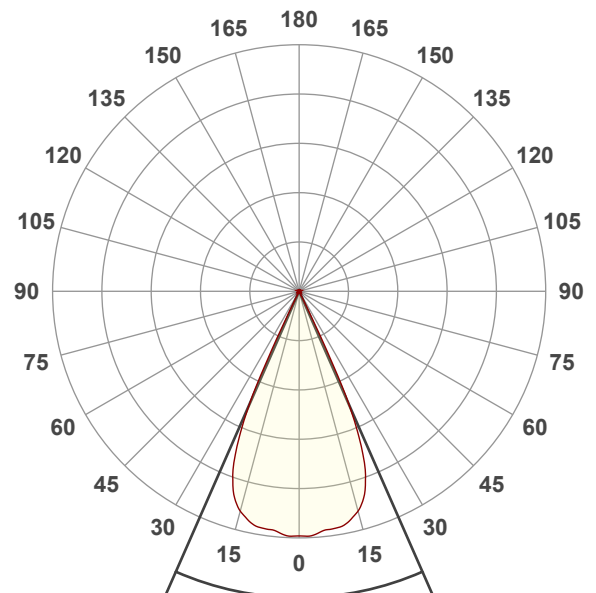
Cold White

Operator:

Giuseppe della Peruta

Date and time:

07/01/2026 13:03:59

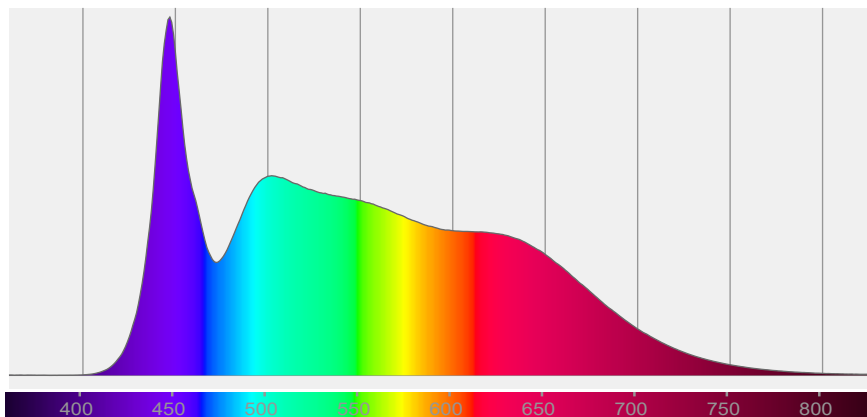


Beam angle 50%: 47,5°

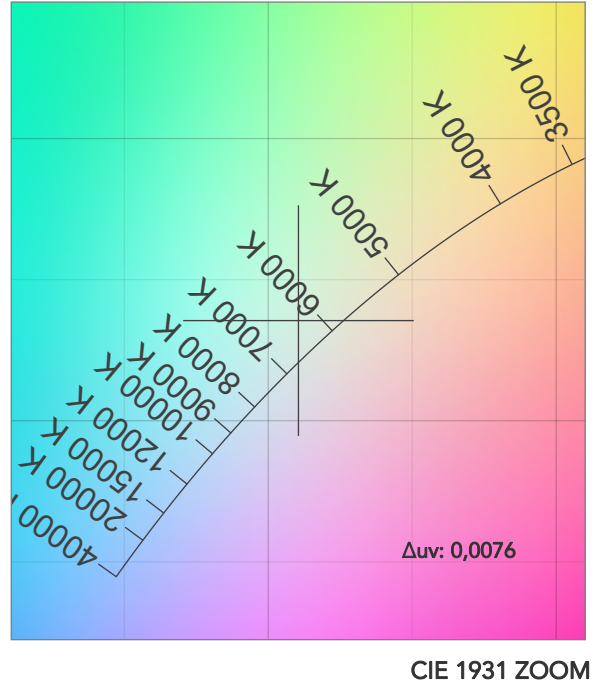
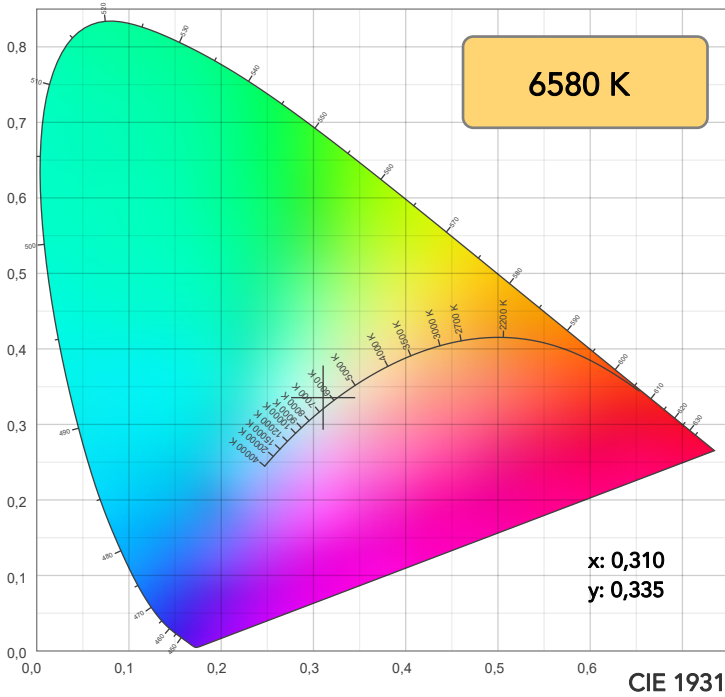
Field angle 10%: 51,8°

Cut off angle 2.5%: 52,5°

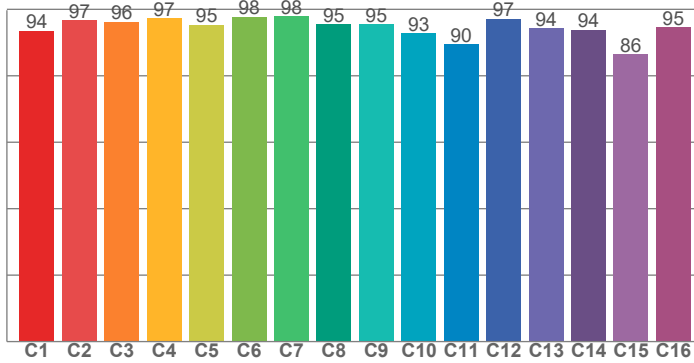
Spectra



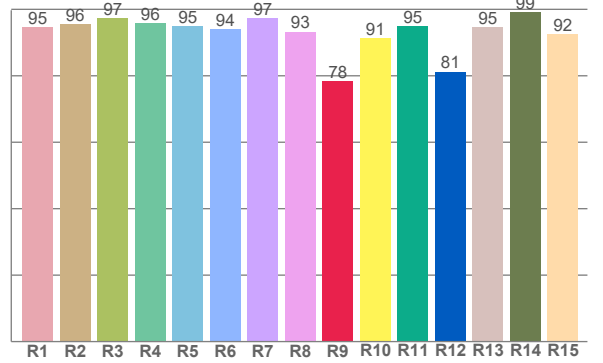
COLOR DETAILS



TM30: 94,6



CRI: 95,4 (R1-R8)



CRI R values, only R1-R8 are used to calculate final CRI value

R1	R2	R3	R4	R5	R6	R7	R8	R9	R10	R11	R12	R13	R14	R15
94,6	95,5	97,4	95,8	94,9	94,1	97,4	93,3	78,4	91,4	94,9	81,2	94,5	99,1	92,5

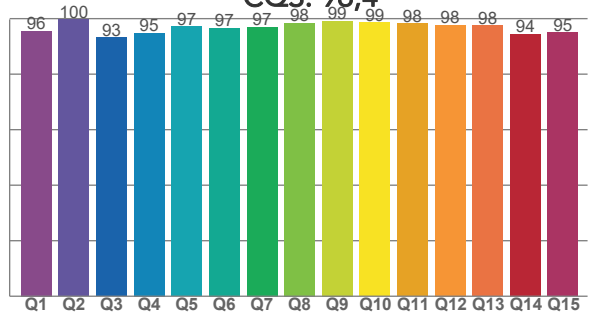
TM30 C values, 16 binned values out of total of 99 C values

C1	C2	C3	C4	C5	C6	C7	C8	C9	C10	C11	C12	C13	C14	C15	C16
93,5	96,7	96,2	97,3	95,4	97,8	97,9	95,5	95,4	92,9	89,5	97,1	94,3	93,9	86,5	94,7

CQS Q values

Q1	Q2	Q3	Q4	Q5	Q6	Q7	Q8	Q9	Q10	Q11	Q12	Q13	Q14	Q15
95,5	99,6	93,2	94,9	97,2	96,6	97,0	98,4	99,1	98,6	98,3	97,7	97,5	94,4	95,0

CQS: 96,4



COLOR PARAMETERS

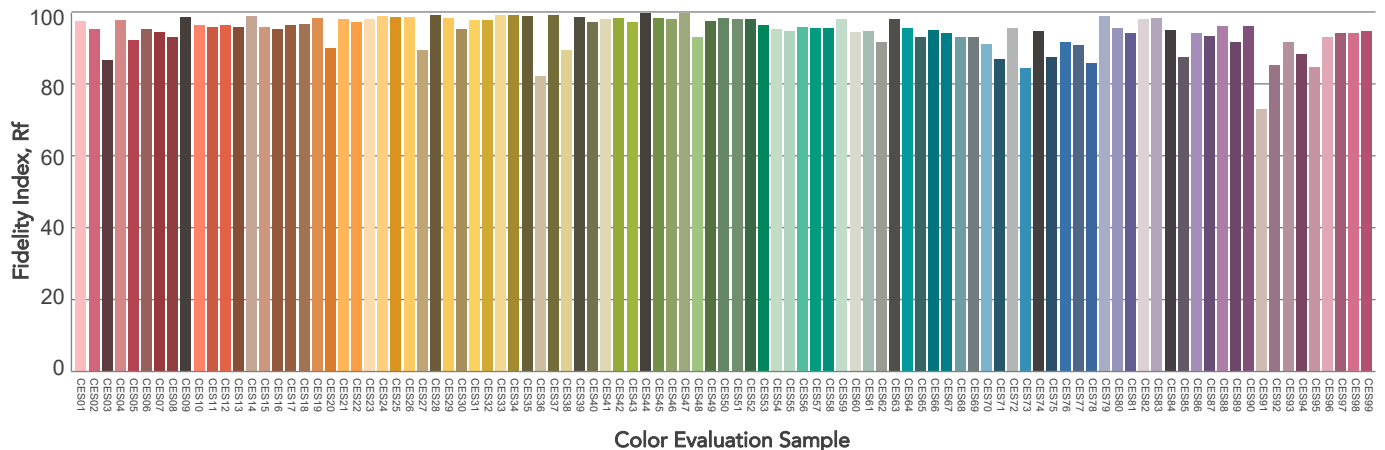
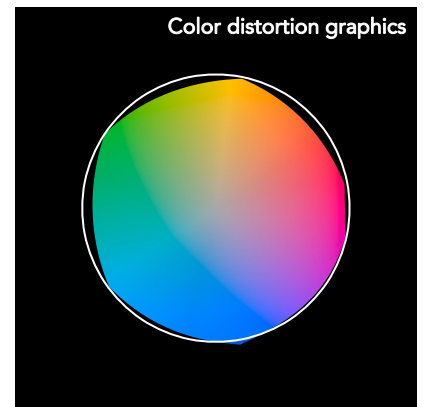
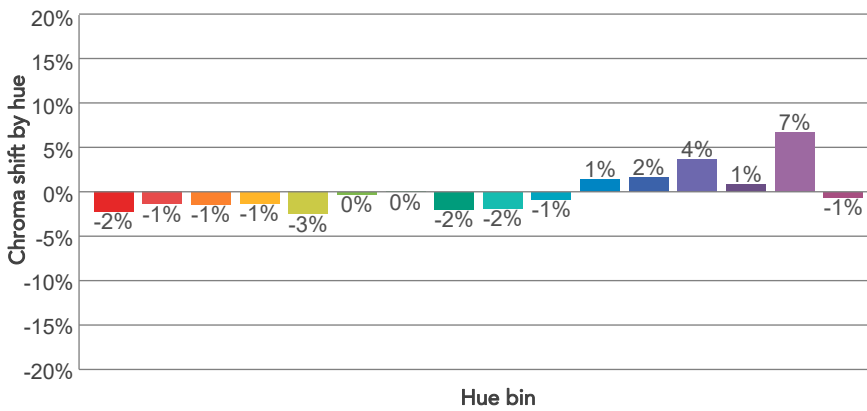
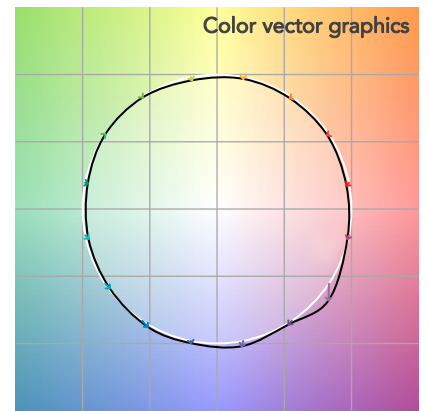
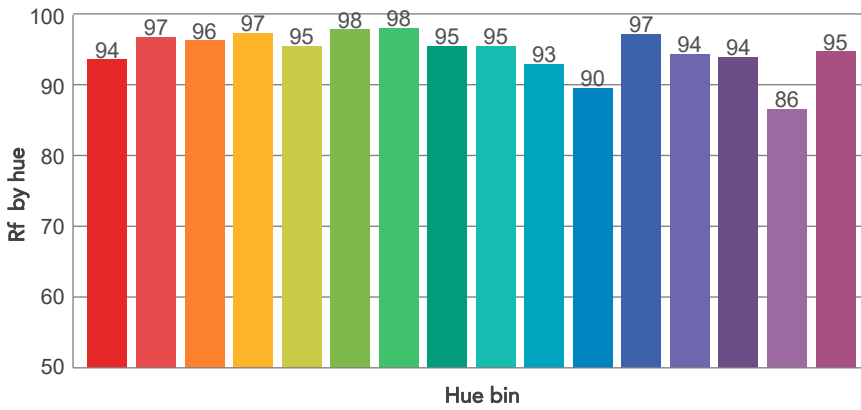
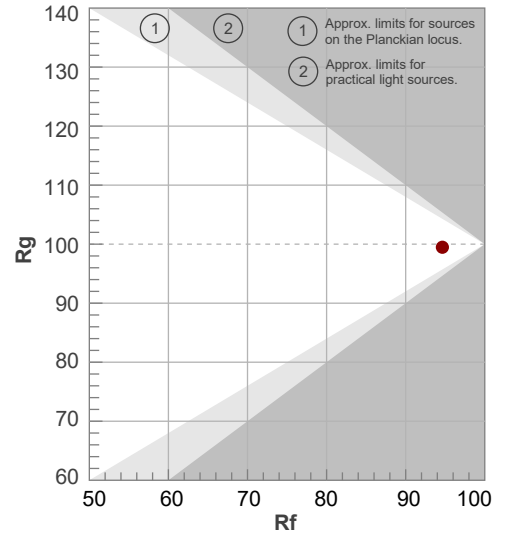
Color temperature	Color rendering index	Red component	Color fidelity	Color gamut	Color quality scale	Television lighting index	Color coordinate cie 1931	Color coordinate cie 1931	Color deviation from black body
CCT	CRI	CRI R9	TM30 Rf	TM30 Rg	CQS	TLCI	x	y	Δuv
6580 K	95,4	78,4	94,6	99,5	96,4	99	0,310	0,335	0,0076

TM30 DETAILS

Rf 94,6
Fidelity index Rf

Rg 99,5
Gammut index

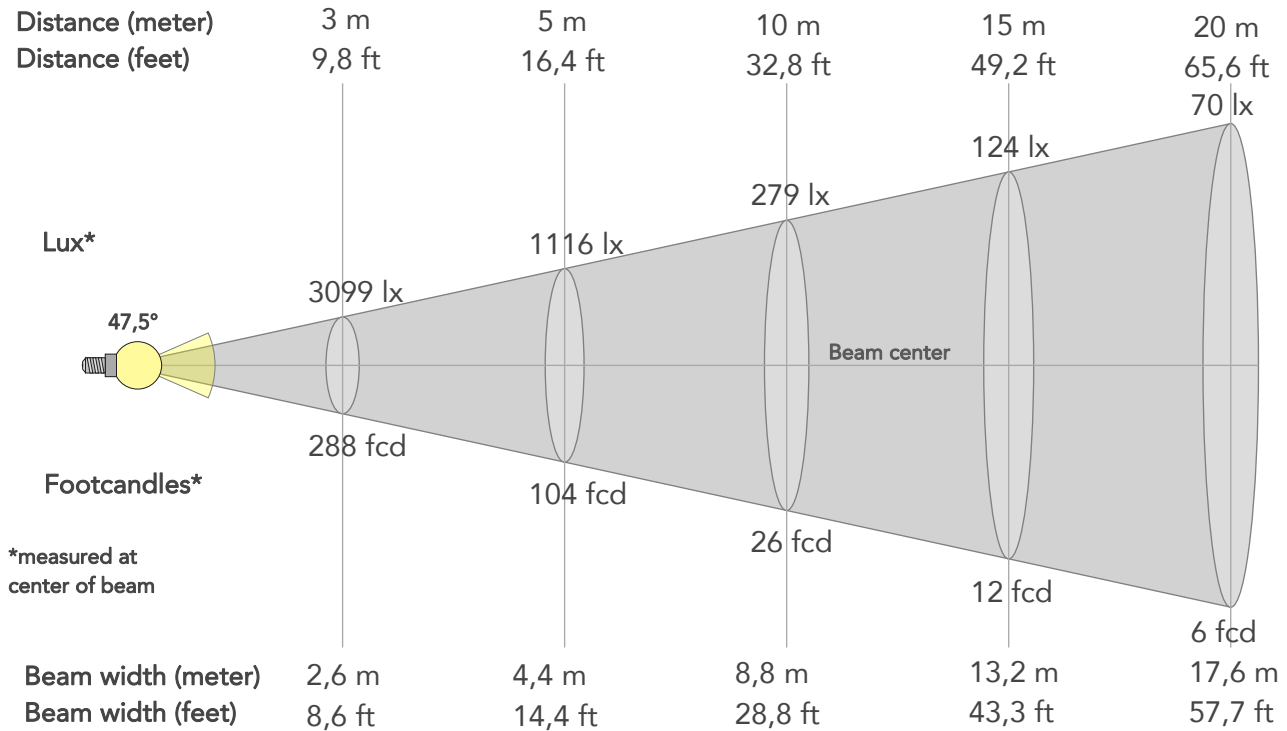
Hue Bin	R _f	Graphic shifts (%)	
		Chroma	Hue
1	94	-2%	-2%
2	97	-1%	0%
3	96	-1%	1%
4	97	-1%	0%
5	95	-3%	-1%
6	98	0%	0%
7	98	0%	0%
8	95	-2%	0%
9	95	-2%	3%
10	93	-1%	5%
11	90	1%	6%
12	97	2%	1%
13	94	4%	-2%
14	94	1%	-3%
15	86	7%	-10%
16	95	-1%	-3%



BEAM DETAILS



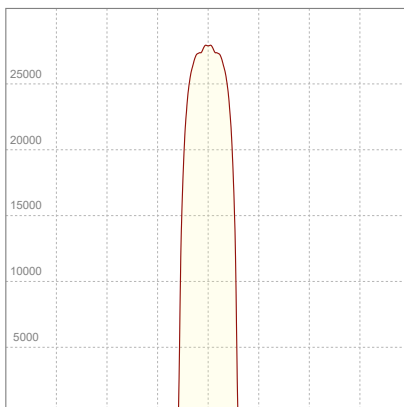
Beam angle 50%	Field angle 10%	Cut off angle 2,5%	Intensity ratio in 120° cone	Intensity ratio in 90° cone
47,5°	51,8°	52,5°	99,8%	99,7%



BEAM INTENSITIES AND WIDTHS

Distance	1m	2m	3m	4m	5m	7,5m	10m	15m	20m	25m	30m	40m	50m
Distance	3,3ft	6,6ft	9,8ft	13,1ft	16,4ft	24,6ft	32,8ft	49,2ft	65,6ft	82ft	98,4ft	131,2ft	164ft
Lux	27891lx	6973lx	3099lx	1743lx	1116lx	496lx	279lx	124lx	70lx	45lx	31lx	17lx	11lx
Footcand.	2591fcd	648fcd	288fcd	162fcd	104fcd	46fcd	26fcd	12fcd	6fcd	4fcd	3fcd	2fcd	1fcd
Beam wid.	0,9m	1,8m	2,6m	3,5m	4,4m	6,6m	8,8m	13,2m	17,6m	22m	26,4m	35,2m	44m
Beam wid.	2,9ft	5,8ft	8,6ft	11,5ft	14,4ft	21,6ft	28,8ft	43,3ft	57,7ft	72,1ft	86,5ft	115,4ft	144,2ft

LINEAR DISTRIBUTION DIAGRAM

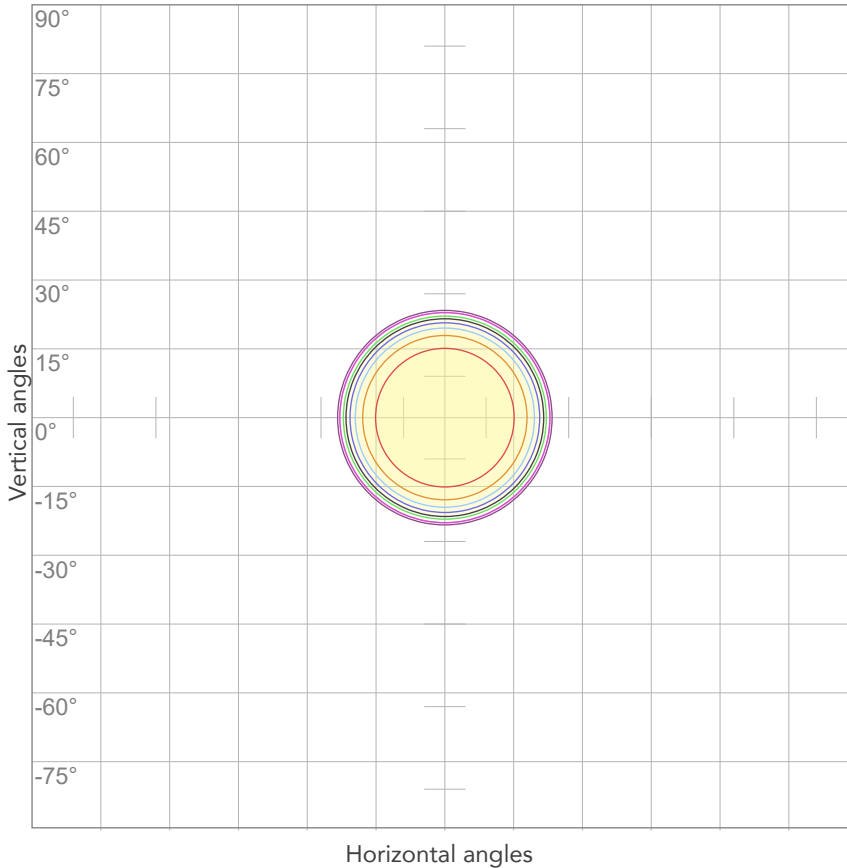


ELECTRICAL SPECIFICATIONS

Input voltage	Input current	Input power	Power FC	Efficiency
226V	1,74A	379,8W	0,97	36lm/W

ISO DIAGRAMS

ISO CANDELA DIAGRAM



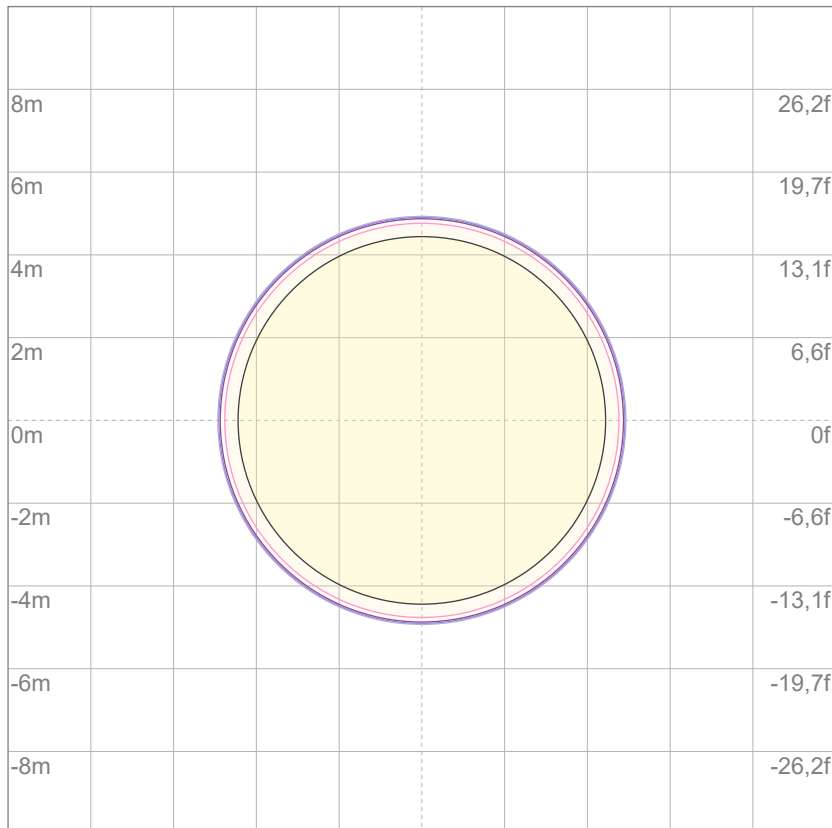
10%	2789 cd
20%	5578 cd
30%	8367 cd
40%	11156 cd
50%	13946 cd
60%	16735 cd
70%	19524 cd
80%	22313 cd

Conditions:

Number of c-planes: 2

Candela at center: 27891 cd

ISO LUX DIAGRAM



Mounting height: 10 meters (33 feet)

3%	8,37 lx
5%	13,9 lx
10%	27,9 lx
30%	83,7 lx
50%	139 lx

Conditions:

Number of c-planes: 2

Lux at center: 279 lx

Lux distribution on a surface when lamp is mounted at 10 meters from the surface.



Total lumen output:

11710 lm

Peak candela output:

23802 cd

Light quality:

CRI: 97,7

Color temperature:

2762 K

PRODUCT NAME:

ECLFWHPVW

MEASURAMENT CONDITIONS:

Beam angle:

PRL50

Target:

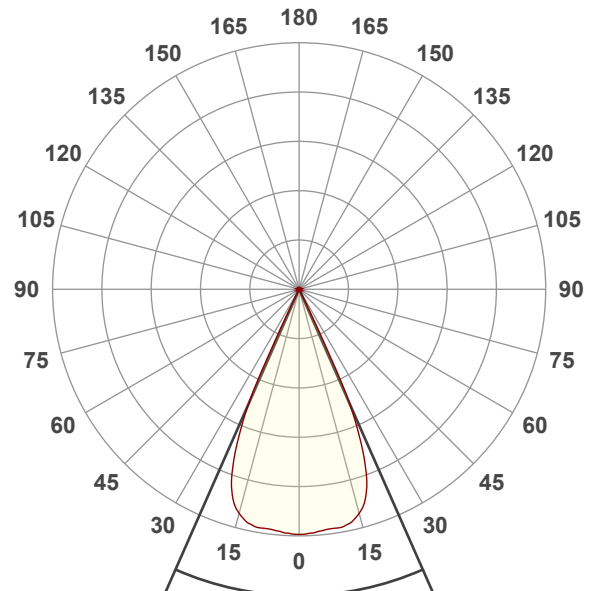
2800K

Operator:

Giuseppe della Peruta

Date and time:

07/01/2026 13:09:46

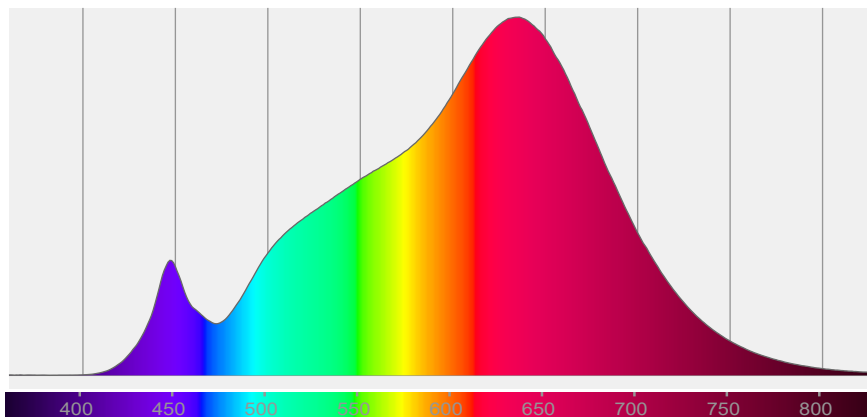


Beam angle 50%: 47,6°

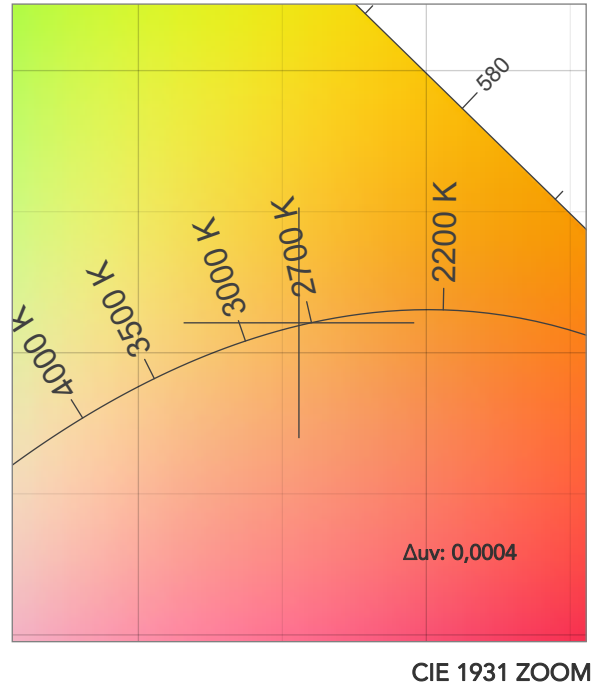
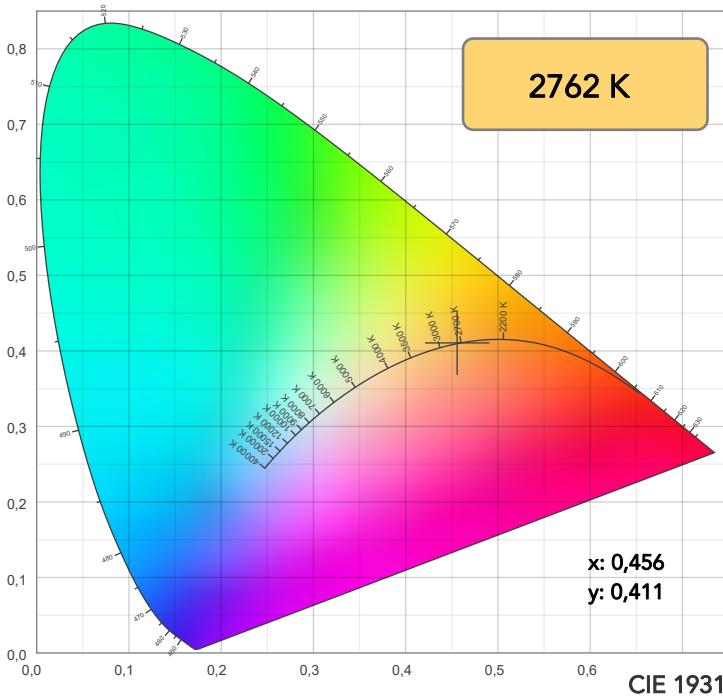
Field angle 10%: 51,7°

Cut off angle 2.5%: 52,6°

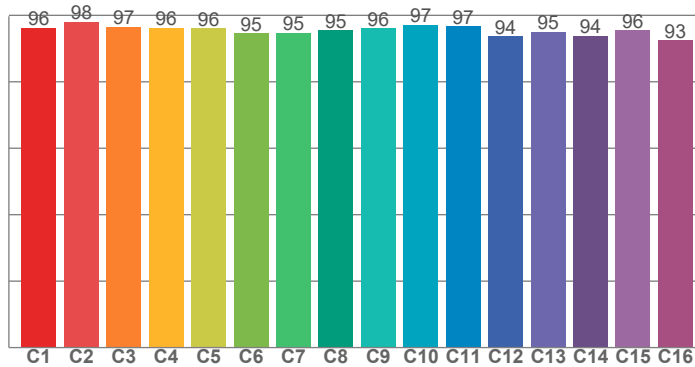
Spectra



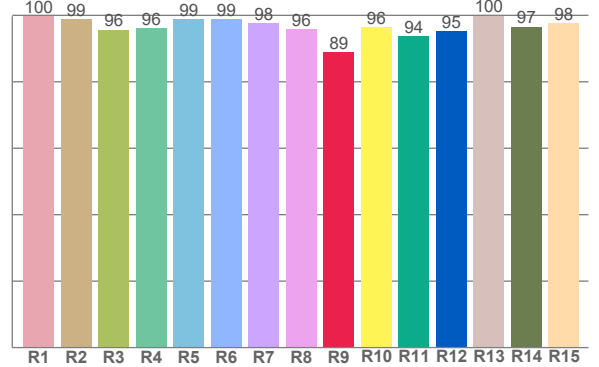
COLOR DETAILS



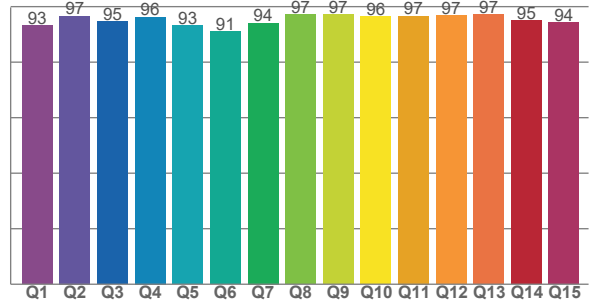
TM30: 95,8



CRI: 97,7 (R1-R8)



CQS: 94,7



CRI R values, only R1-R8 are used to calculate final CRI value

R1	R2	R3	R4	R5	R6	R7	R8	R9	R10	R11	R12	R13	R14	R15
99,7	98,9	95,7	96,2	98,9	98,8	97,7	95,9	88,9	96,4	93,7	95,3	99,9	96,6	97,7

TM30 C values, 16 binned values out of total of 99 C values

C1	C2	C3	C4	C5	C6	C7	C8	C9	C10	C11	C12	C13	C14	C15	C16
96,3	98,0	96,6	96,3	96,2	94,6	94,8	95,4	96,2	97,2	96,6	93,8	95,0	93,9	95,5	92,6

CQS Q values

Q1	Q2	Q3	Q4	Q5	Q6	Q7	Q8	Q9	Q10	Q11	Q12	Q13	Q14	Q15
93,2	96,6	94,6	96,3	93,3	91,1	94,0	97,2	97,1	96,4	96,7	96,7	97,2	94,9	94,2

COLOR PARAMETERS

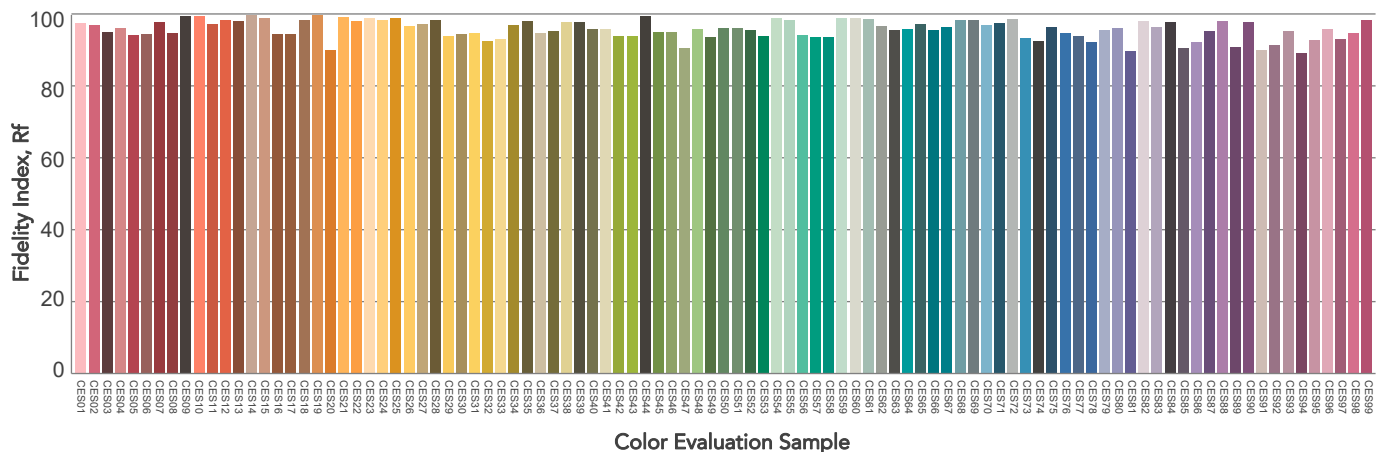
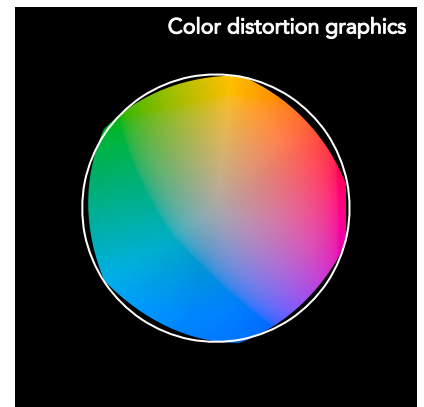
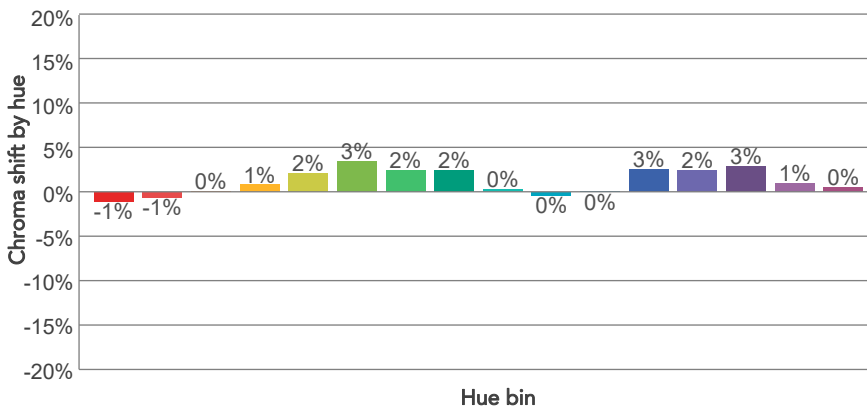
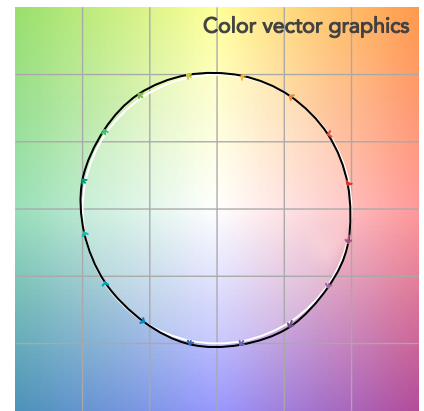
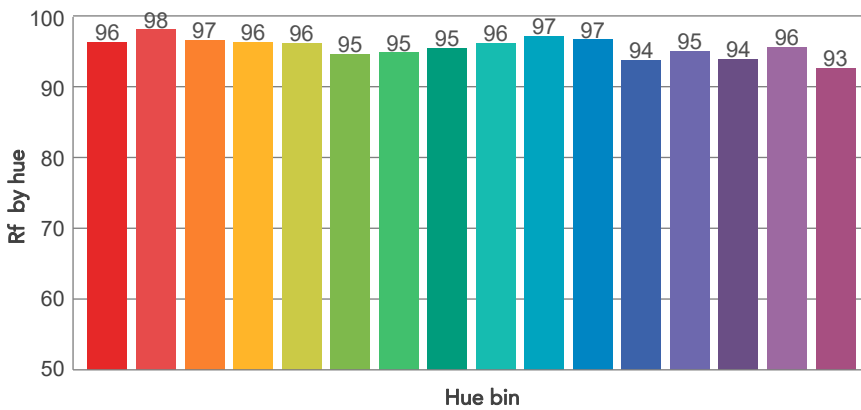
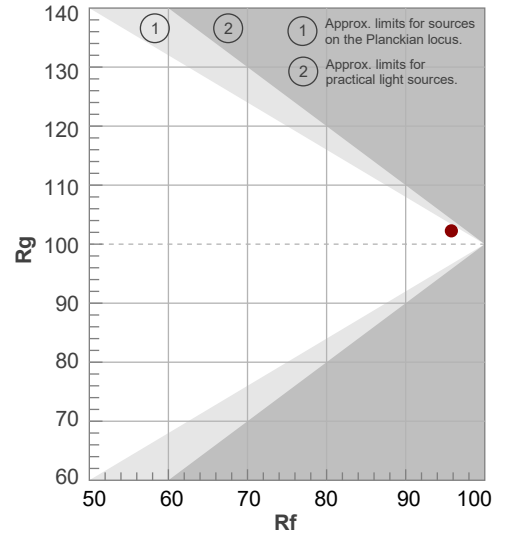
Color temperature	Color rendering index	Red component	Color fidelity	Color gamut	Color quality scale	Television lighting index	Color coordinate cie 1931	Color coordinate cie 1931	Color deviation from black body
CCT	CRI	CRI R9	TM30 Rf	TM30 Rg	CQS	TLCI	x	y	Δuv
2762 K	97,7	88,9	95,8	102,3	94,7	97	0,456	0,411	0,0004

TM30 DETAILS

Rf 95,8
Fidelity index Rf

Rg 102,3
Gammut index

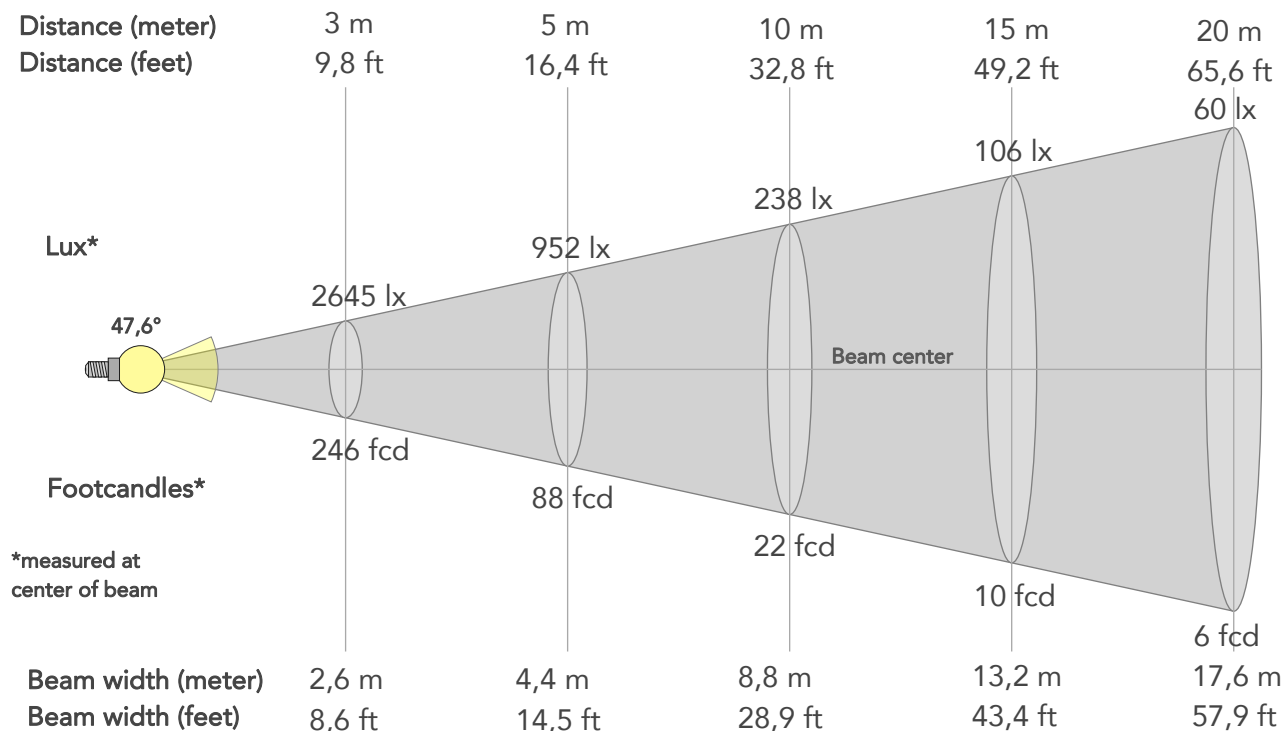
Hue Bin	R _f	Graphic shifts (%)	
		Chroma	Hue
1	96	-1%	-1%
2	98	-1%	0%
3	97	0%	2%
4	96	1%	1%
5	96	2%	2%
6	95	3%	1%
7	95	2%	-2%
8	95	2%	-2%
9	96	0%	-2%
10	97	0%	-1%
11	97	0%	2%
12	94	3%	0%
13	95	2%	-3%
14	94	3%	-4%
15	96	1%	-3%
16	93	0%	-6%



BEAM DETAILS



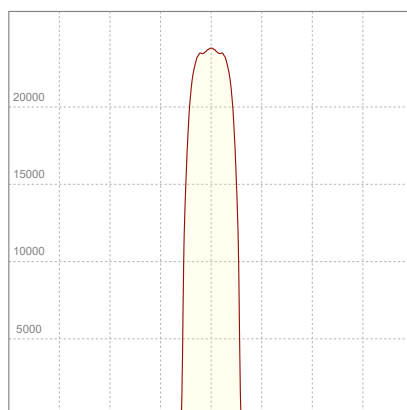
Beam angle 50%	Field angle 10%	Cut off angle 2,5%	Intensity ratio in 120° cone	Intensity ratio in 90° cone
47,6°	51,7°	52,6°	99,8%	99,7%



BEAM INTENSITIES AND WIDTHS

Distance	1m	2m	3m	4m	5m	7,5m	10m	15m	20m	25m	30m	40m	50m
Distance	3,3ft	6,6ft	9,8ft	13,1ft	16,4ft	24,6ft	32,8ft	49,2ft	65,6ft	82ft	98,4ft	131,2ft	164ft
Lux	23802lx	5951lx	2645lx	1488lx	952lx	423lx	238lx	106lx	60lx	38lx	26lx	15lx	10lx
Footcand.	2211fcd	553fcd	246fcd	138fcd	88fcd	39fcd	22fcd	10fcd	6fcd	4fcd	2fcd	1fcd	1fcd
Beam wid.	0,9m	1,8m	2,6m	3,5m	4,4m	6,6m	8,8m	13,2m	17,6m	22,1m	26,5m	35,3m	44,1m
Beam wid.	2,9ft	5,8ft	8,6ft	11,6ft	14,5ft	21,7ft	28,9ft	43,4ft	57,9ft	72,4ft	86,8ft	115,8ft	144,7ft

LINEAR DISTRIBUTION DIAGRAM

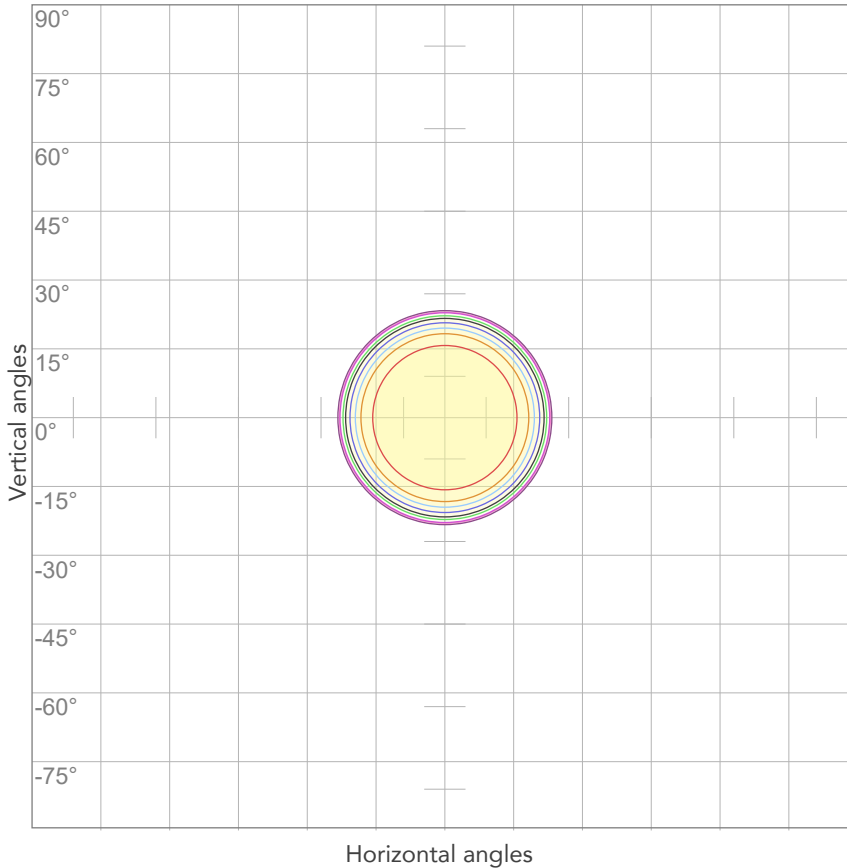


ELECTRICAL SPECIFICATIONS

Input voltage	Input current	Input power	Power FC	Efficiency
226V	1,88A	410,5W	0,97	29lm/W

ISO DIAGRAMS

ISO CANDELA DIAGRAM



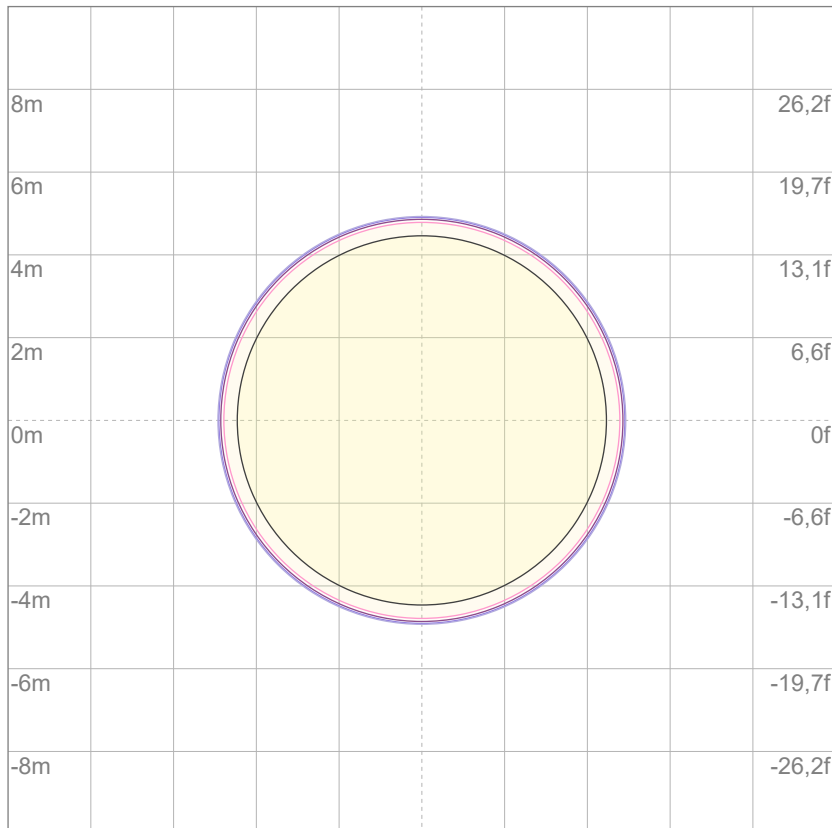
10%	2380 cd
20%	4760 cd
30%	7141 cd
40%	9521 cd
50%	11901 cd
60%	14281 cd
70%	16661 cd
80%	19042 cd

Conditions:

Number of c-planes: 2

Candela at center: 23802 cd

ISO LUX DIAGRAM



Mounting height: 10 meters (33 feet)

3%	7,14 lx
5%	11,9 lx
10%	23,8 lx
30%	71,4 lx
50%	119 lx

Conditions:

Number of c-planes: 2

Lux at center: 238 lx

Lux distribution on a surface when lamp is mounted at 10 meters from the surface.



Total lumen output:

13054 lm

Peak candela output:

26631 cd

Light quality:

CRI: 97,2

Color temperature:

3197 K

PRODUCT NAME:

ECLFWHPVW

MEASUREMENT CONDITIONS:

Beam angle:

PRL50

Target:

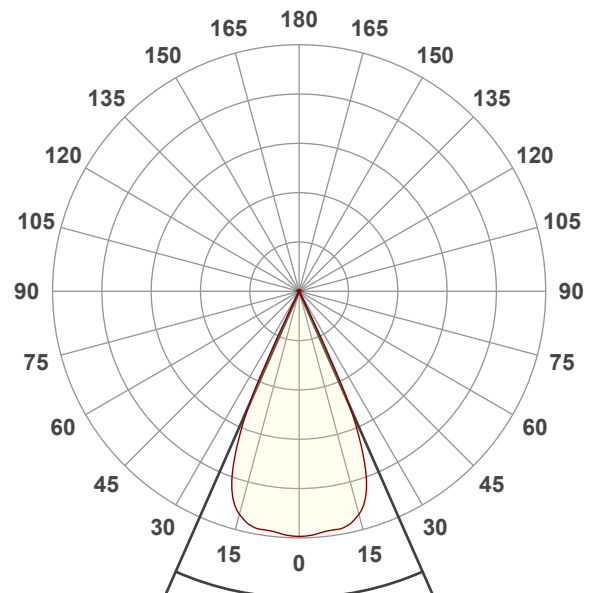
3200K

Operator:

Giuseppe della Peruta

Date and time:

07/01/2026 13:12:17

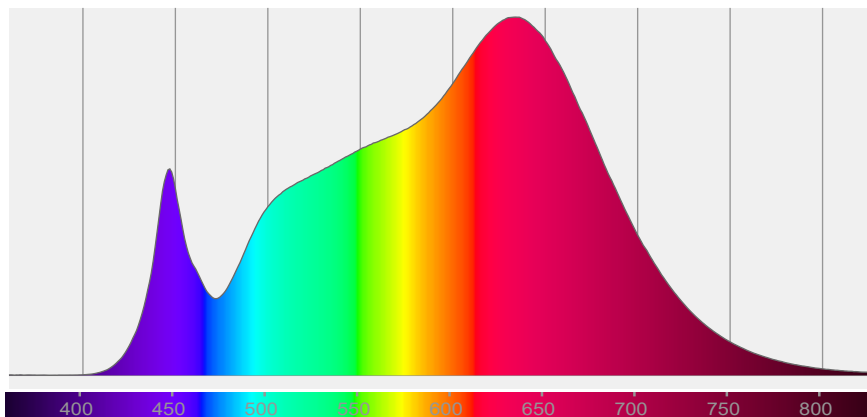


Beam angle 50%: 47,5°

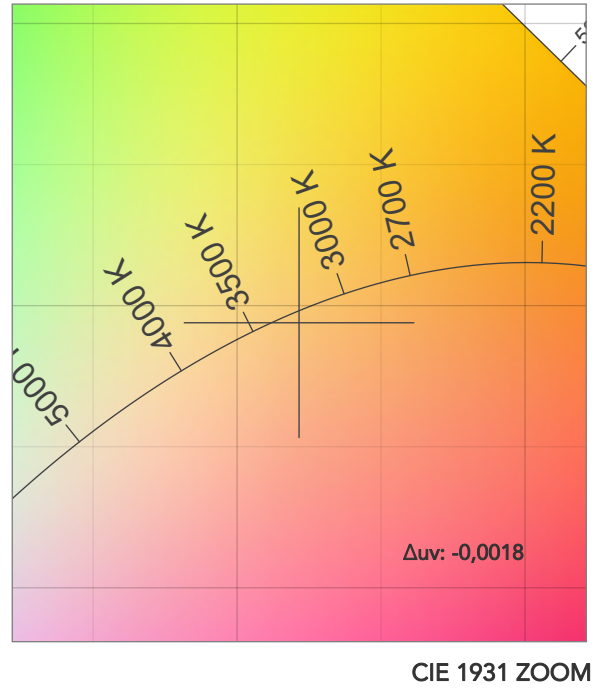
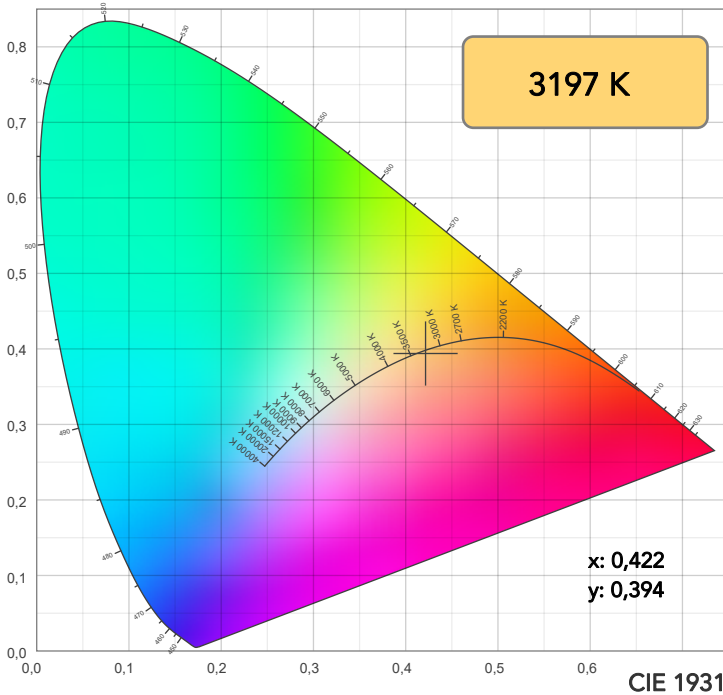
Field angle 10%: 51,7°

Cut off angle 2.5%: 52,5°

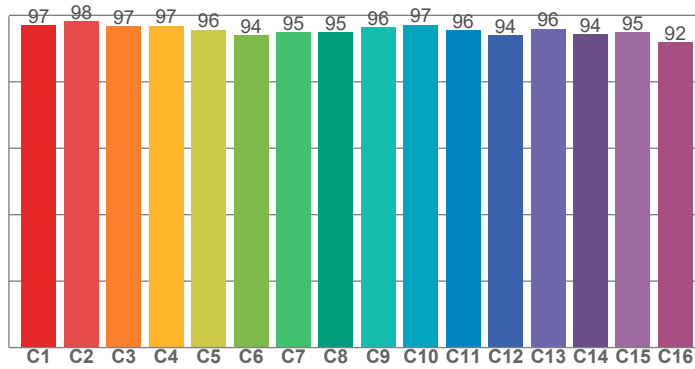
Spectra



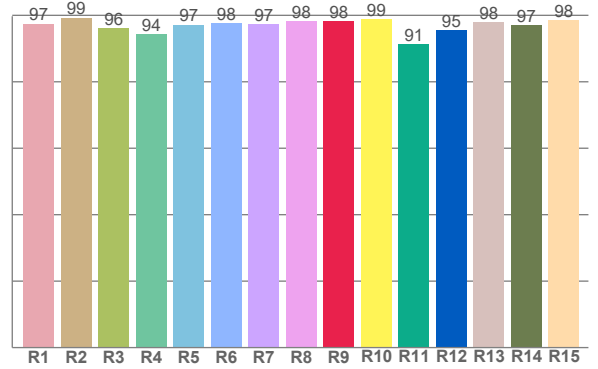
COLOR DETAILS



TM30: 95,8



CRI: 97,2 (R1-R8)



CRI R values, only R1-R8 are used to calculate final CRI value

R1	R2	R3	R4	R5	R6	R7	R8	R9	R10	R11	R12	R13	R14	R15
97,5	99,3	96,2	94,3	97,2	97,6	97,4	98,3	98,2	98,9	91,4	95,5	97,9	97,1	98,5

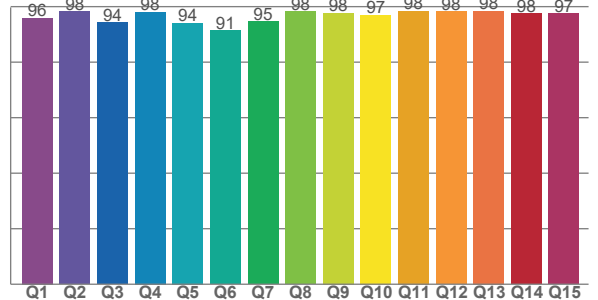
TM30 C values, 16 binned values out of total of 99 C values

C1	C2	C3	C4	C5	C6	C7	C8	C9	C10	C11	C12	C13	C14	C15	C16
97,0	98,2	96,6	96,8	95,6	94,0	94,9	94,9	96,5	97,1	95,5	93,9	96,0	94,2	94,8	91,9

CQS Q values

Q1	Q2	Q3	Q4	Q5	Q6	Q7	Q8	Q9	Q10	Q11	Q12	Q13	Q14	Q15
95,9	98,3	94,2	98,0	94,2	91,4	94,6	98,2	97,7	97,0	98,4	98,3	98,4	97,5	97,5

CQS: 95,8



COLOR PARAMETERS

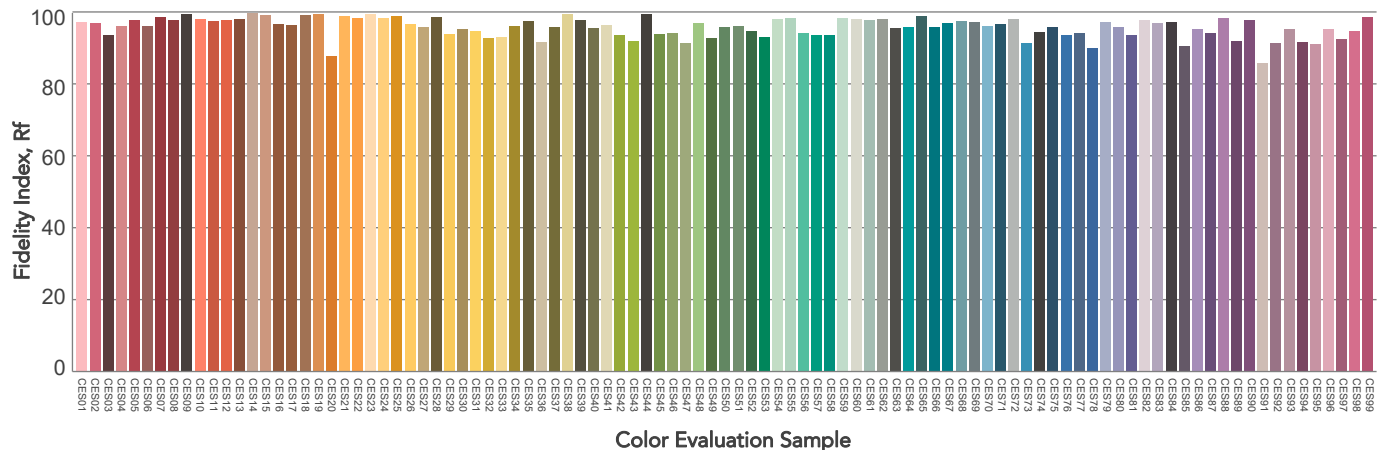
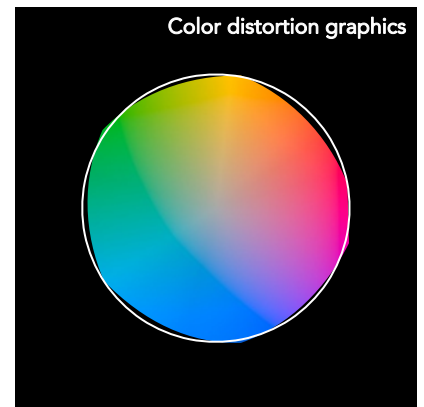
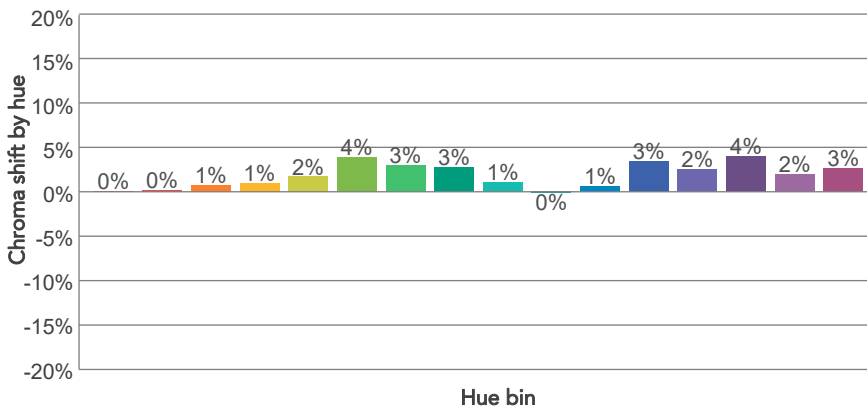
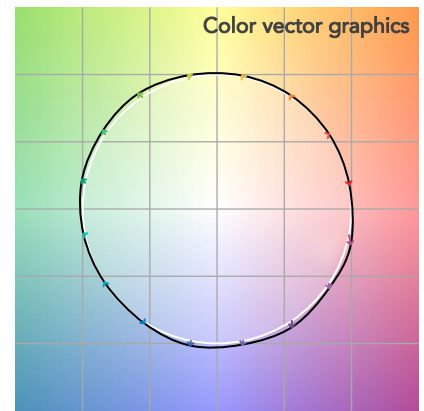
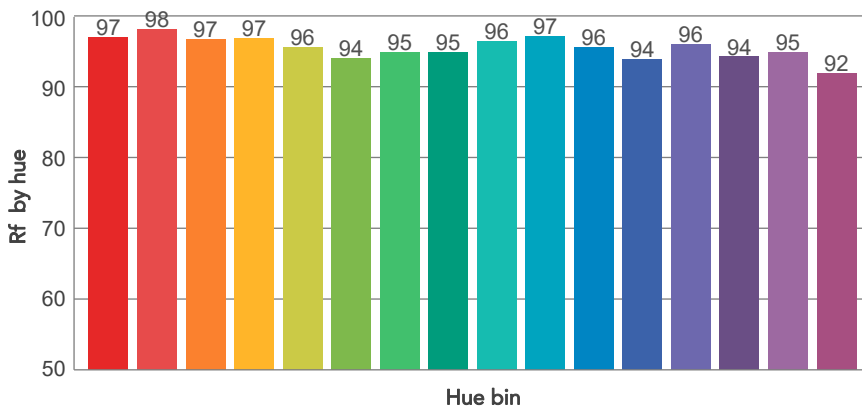
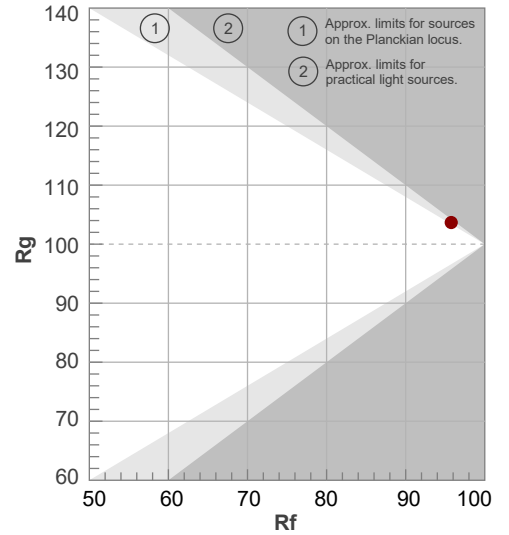
Color temperature	Color rendering index	Red component	Color fidelity	Color gamut	Color quality scale	Television lighting index	Color coordinate cie 1931	Color coordinate cie 1931	Color deviation from black body
CCT	CRI	CRI R9	TM30 Rf	TM30 Rg	CQS	TLCI	x	y	Δuv
3197 K	97,2	98,2	95,8	103,7	95,8	97	0,422	0,394	-0,0018

TM30 DETAILS

Rf 95,8
Fidelity index Rf

Rg 103,7
Gammut index

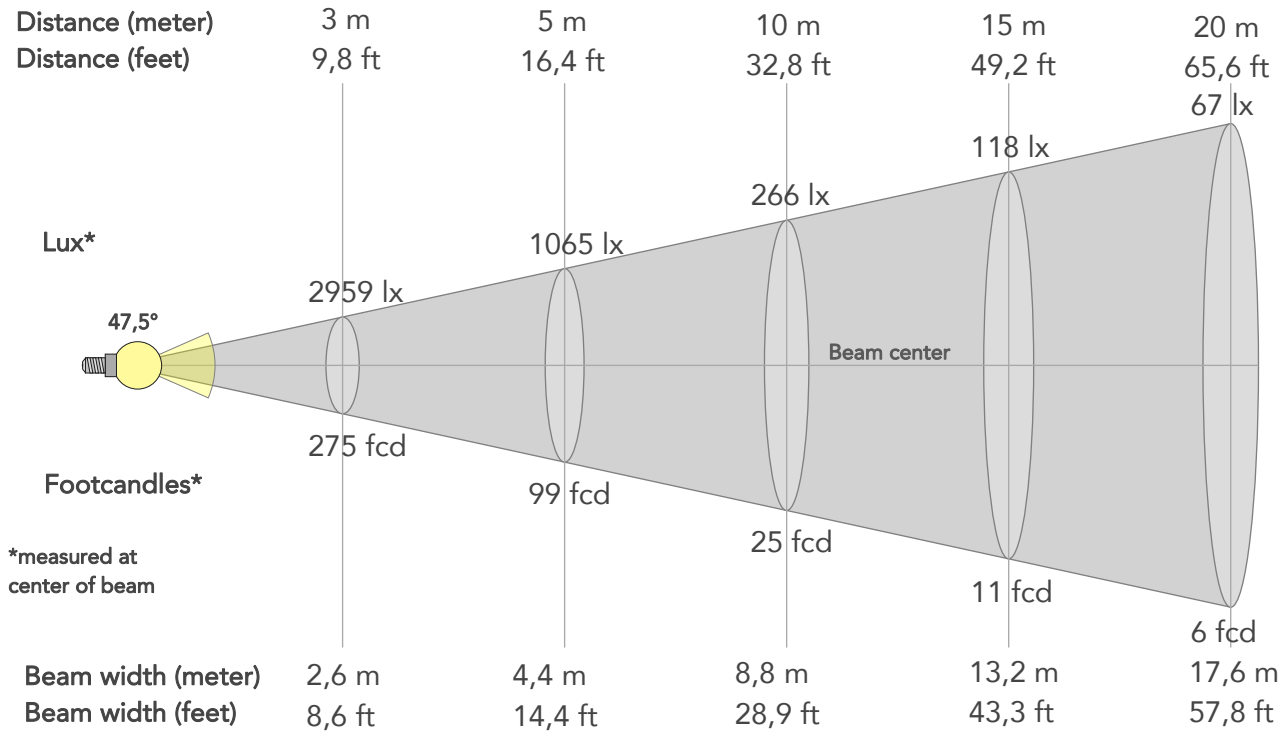
Hue Bin	R _f	Graphic shifts (%)	
		Chroma	Hue
1	97	0%	-1%
2	98	0%	0%
3	97	1%	1%
4	97	1%	1%
5	96	2%	2%
6	94	4%	1%
7	95	3%	-1%
8	95	3%	-2%
9	96	1%	-1%
10	97	0%	-1%
11	96	1%	2%
12	94	3%	0%
13	96	2%	-1%
14	94	4%	-2%
15	95	2%	-2%
16	92	3%	-6%



BEAM DETAILS



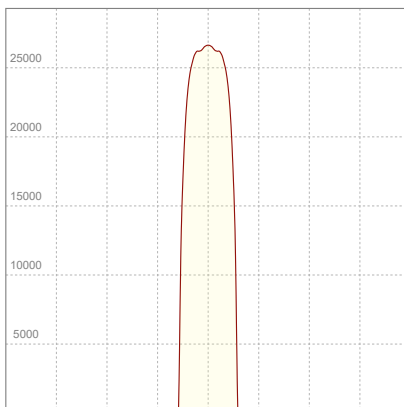
Beam angle 50%	Field angle 10%	Cut off angle 2,5%	Intensity ratio in 120° cone	Intensity ratio in 90° cone
47,5°	51,7°	52,5°	99,8%	99,7%



BEAM INTENSITIES AND WIDTHS

Distance	1m	2m	3m	4m	5m	7,5m	10m	15m	20m	25m	30m	40m	50m
Distance	3,3ft	6,6ft	9,8ft	13,1ft	16,4ft	24,6ft	32,8ft	49,2ft	65,6ft	82ft	98,4ft	131,2ft	164ft
Lux	26631lx	6658lx	2959lx	1664lx	1065lx	473lx	266lx	118lx	67lx	43lx	30lx	17lx	11lx
Footcand.	2474fcd	619fcd	275fcd	155fcd	99fcd	44fcd	25fcd	11fcd	6fcd	4fcd	3fcd	2fcd	1fcd
Beam wid.	0,9m	1,8m	2,6m	3,5m	4,4m	6,6m	8,8m	13,2m	17,6m	22m	26,4m	35,2m	44m
Beam wid.	2,9ft	5,8ft	8,6ft	11,5ft	14,4ft	21,7ft	28,9ft	43,3ft	57,8ft	72,2ft	86,6ft	115,5ft	144,4ft

LINEAR DISTRIBUTION DIAGRAM

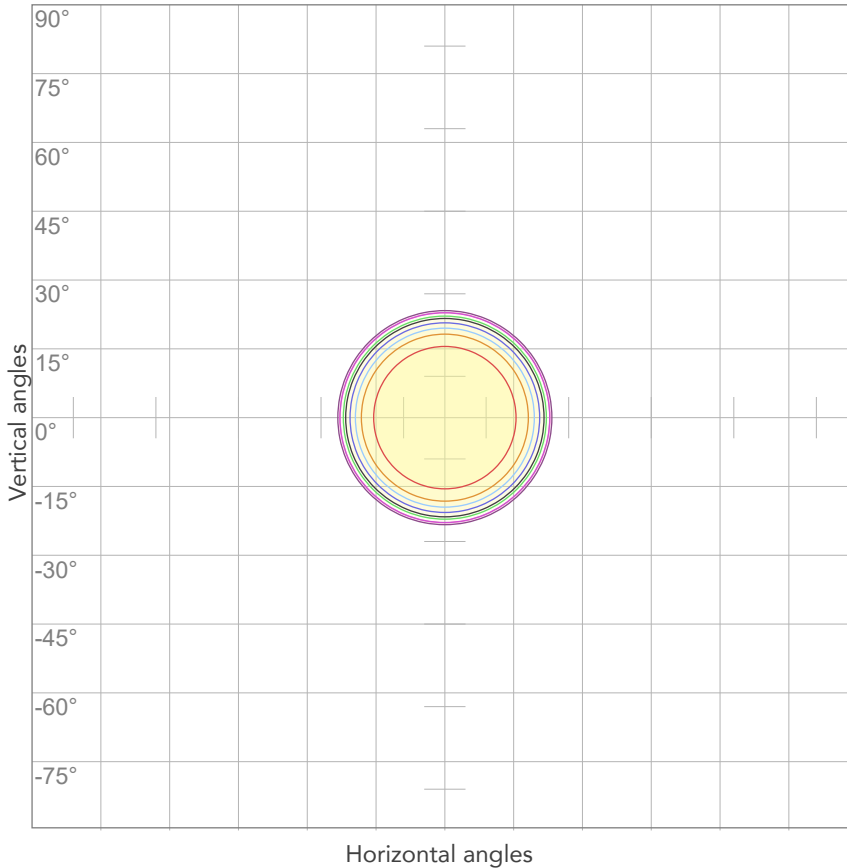


ELECTRICAL SPECIFICATIONS

Input voltage	Input current	Input power	Power FC	Efficiency
228V	0,374A	12,2W	0,14	1070lm/W

ISO DIAGRAMS

ISO CANDELA DIAGRAM



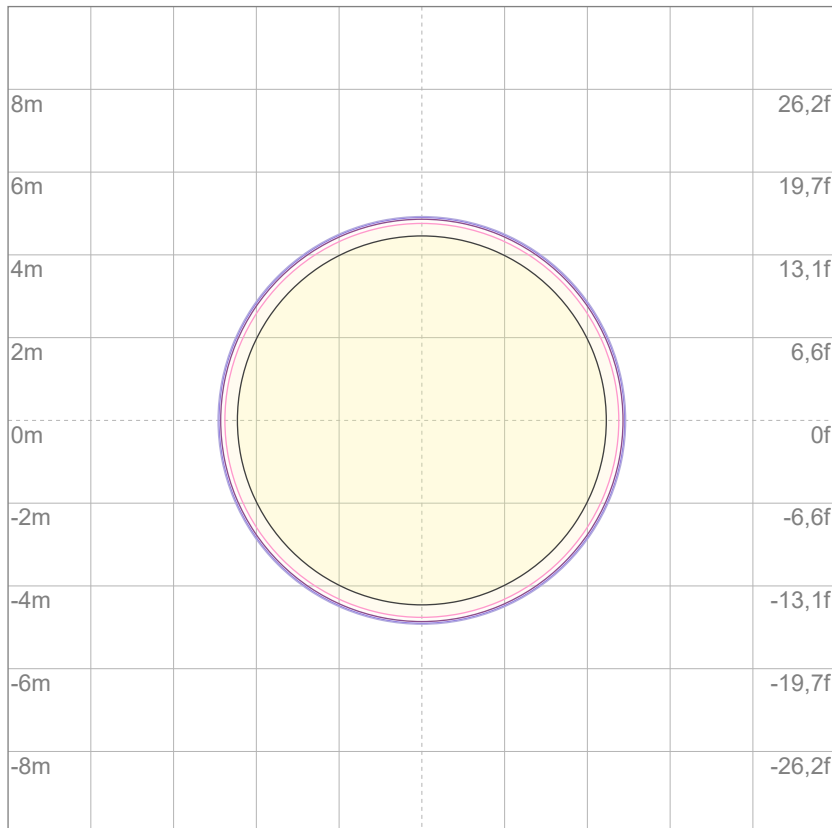
10%	2663 cd
20%	5326 cd
30%	7989 cd
40%	10652 cd
50%	13315 cd
60%	15979 cd
70%	18642 cd
80%	21305 cd

Conditions:

Number of c-planes: 2

Candela at center: 26631 cd

ISO LUX DIAGRAM



Mounting height: 10 meters (33 feet)

3%	7,99 lx
5%	13,3 lx
10%	26,6 lx
30%	79,9 lx
50%	133 lx

Conditions:

Number of c-planes: 2

Lux at center: 266 lx

Lux distribution on a surface when lamp is mounted at 10 meters from the surface.



Total lumen output:

14039 lm

Peak candela output:

28730 cd

Light quality:

CRI: 97,0

Color temperature:

4012 K

PRODUCT NAME:

ECLFWHPVW

MEASURAMENT CONDITIONS:

Beam angle:

PRL50

Target:

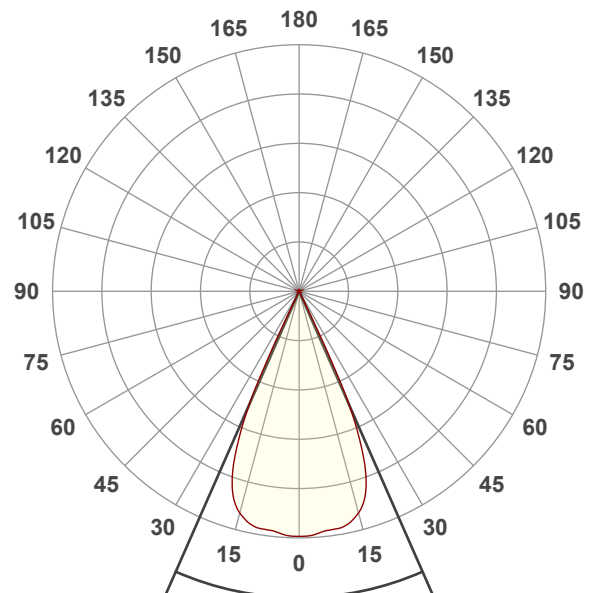
4000K

Operator:

Giuseppe della Peruta

Date and time:

07/01/2026 13:15:35

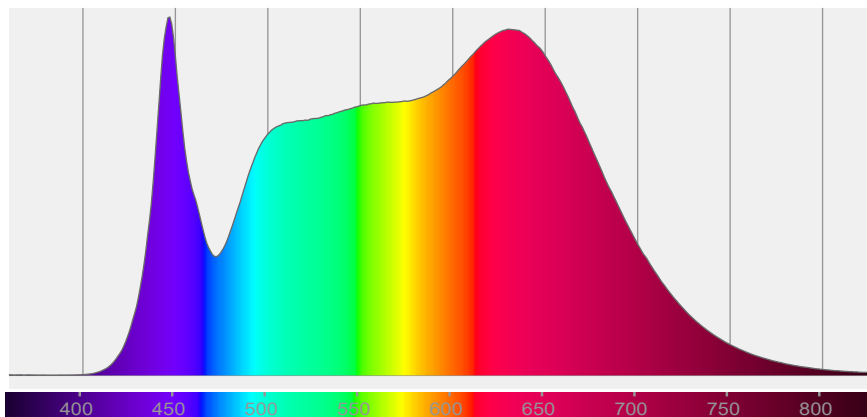


Beam angle 50%: 47,5°

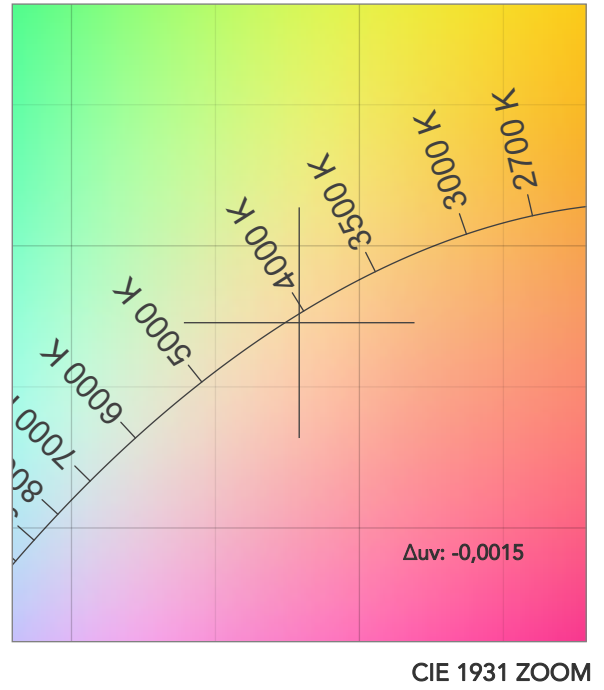
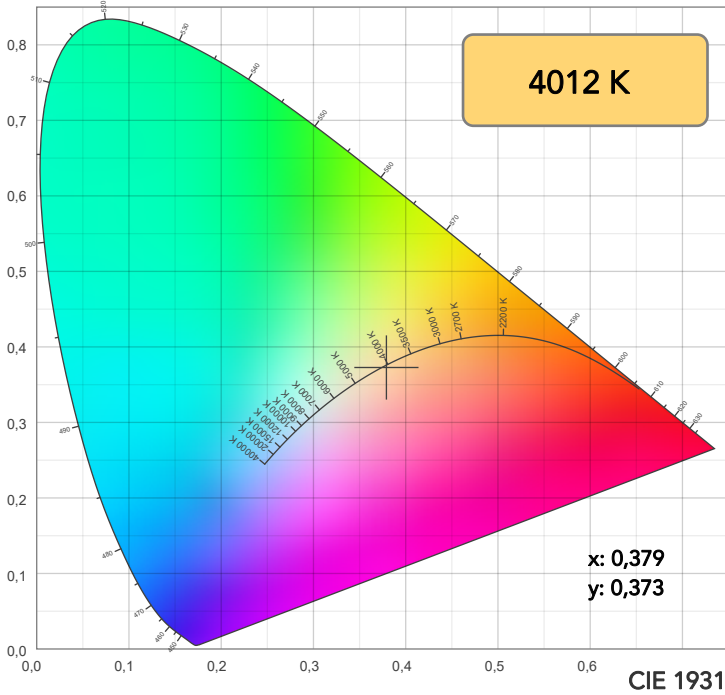
Field angle 10%: 51,7°

Cut off angle 2.5%: 52,5°

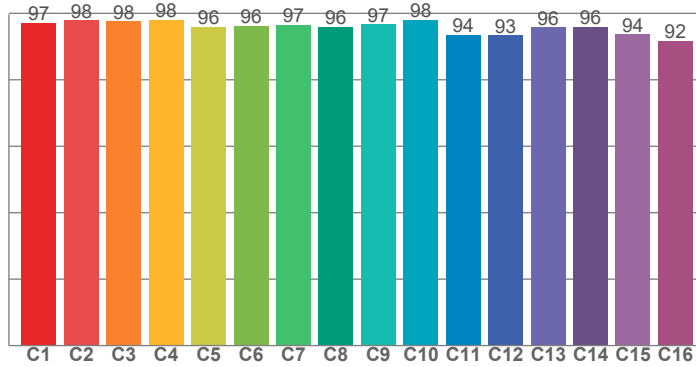
Spectra



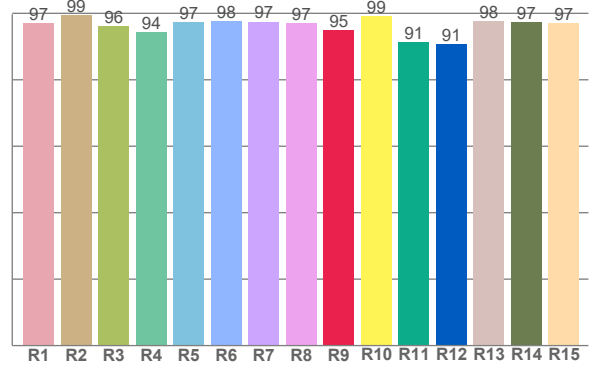
COLOR DETAILS



TM30: 96,0



CRI: 97,0 (R1-R8)



CRI R values, only R1-R8 are used to calculate final CRI value

R1	R2	R3	R4	R5	R6	R7	R8	R9	R10	R11	R12	R13	R14	R15
97,1	99,5	96,1	94,3	97,3	97,7	97,5	96,9	95,0	99,1	91,4	90,7	97,7	97,4	97,1

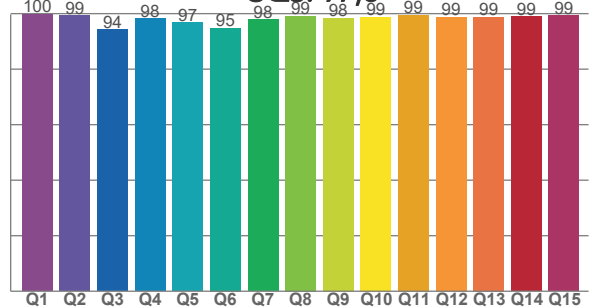
TM30 C values, 16 binned values out of total of 99 C values

C1	C2	C3	C4	C5	C6	C7	C8	C9	C10	C11	C12	C13	C14	C15	C16
97,2	97,8	97,6	98,1	96,0	96,2	96,6	96,0	96,6	98,1	93,5	93,3	95,9	95,9	93,7	91,7

CQS Q values

Q1	Q2	Q3	Q4	Q5	Q6	Q7	Q8	Q9	Q10	Q11	Q12	Q13	Q14	Q15
99,8	99,3	94,3	98,3	96,9	94,8	97,9	99,1	98,5	98,9	99,5	98,8	98,8	98,9	99,3

CQS: 97,6



COLOR PARAMETERS

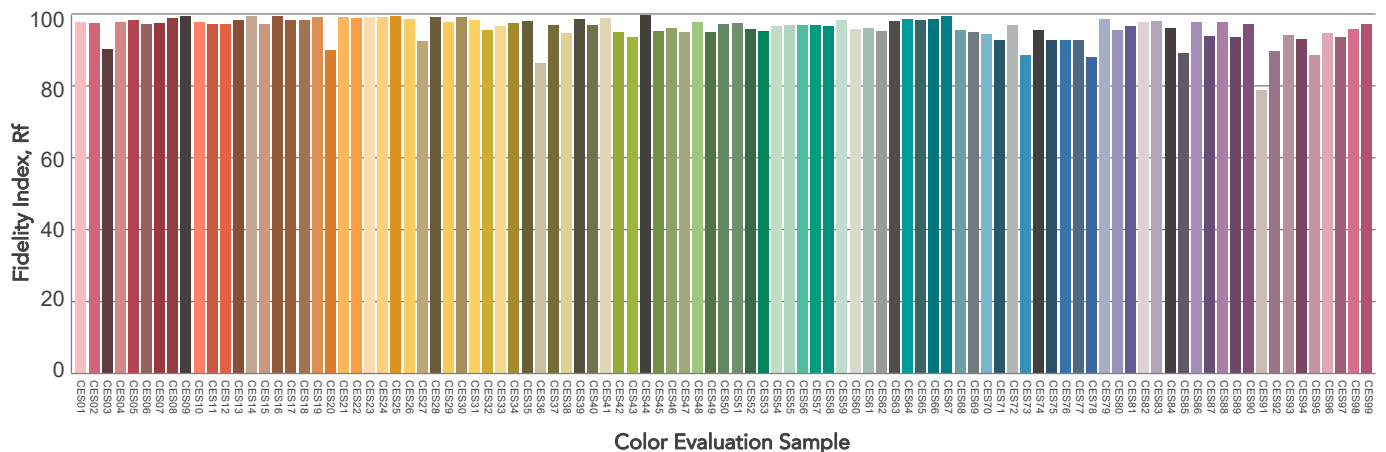
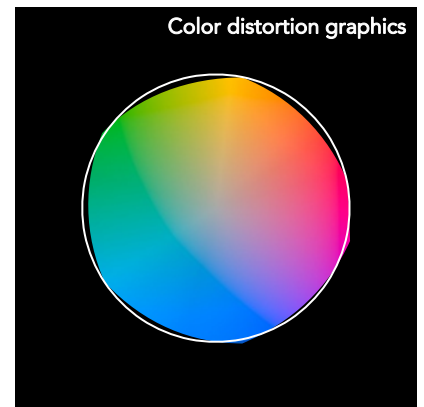
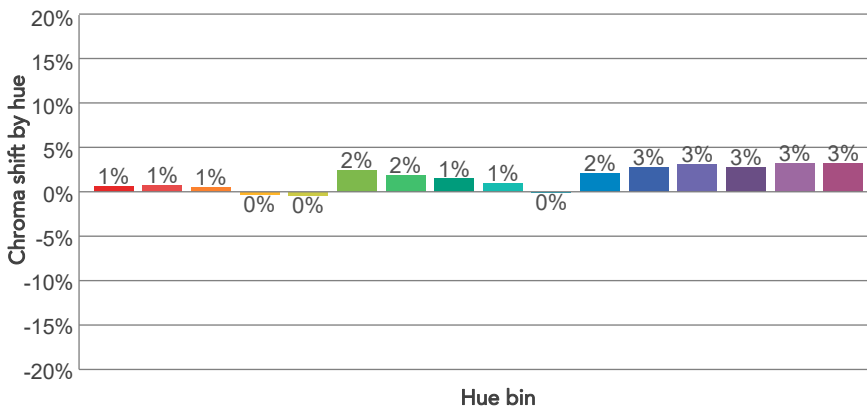
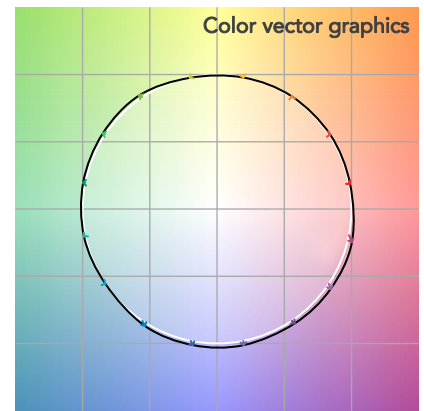
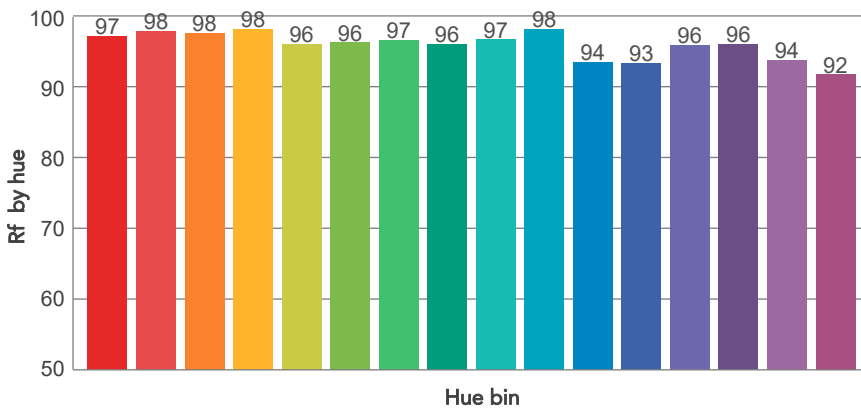
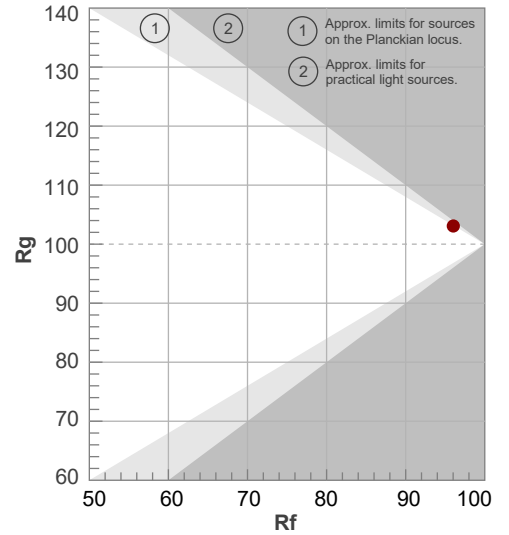
Color temperature	Color rendering index	Red component	Color fidelity	Color gamut	Color quality scale	Television lighting index	Color coordinate cie 1931	Color coordinate cie 1931	Color deviation from black body
CCT	CRI	CRI R9	TM30 Rf	TM30 Rg	CQS	TLCI	x	y	Δuv
4012 K	97,0	95,0	96,0	103,1	97,6	98	0,379	0,373	-0,0015

TM30 DETAILS

Rf 96,0
Fidelity index Rf

Rg 103,1
Gammut index

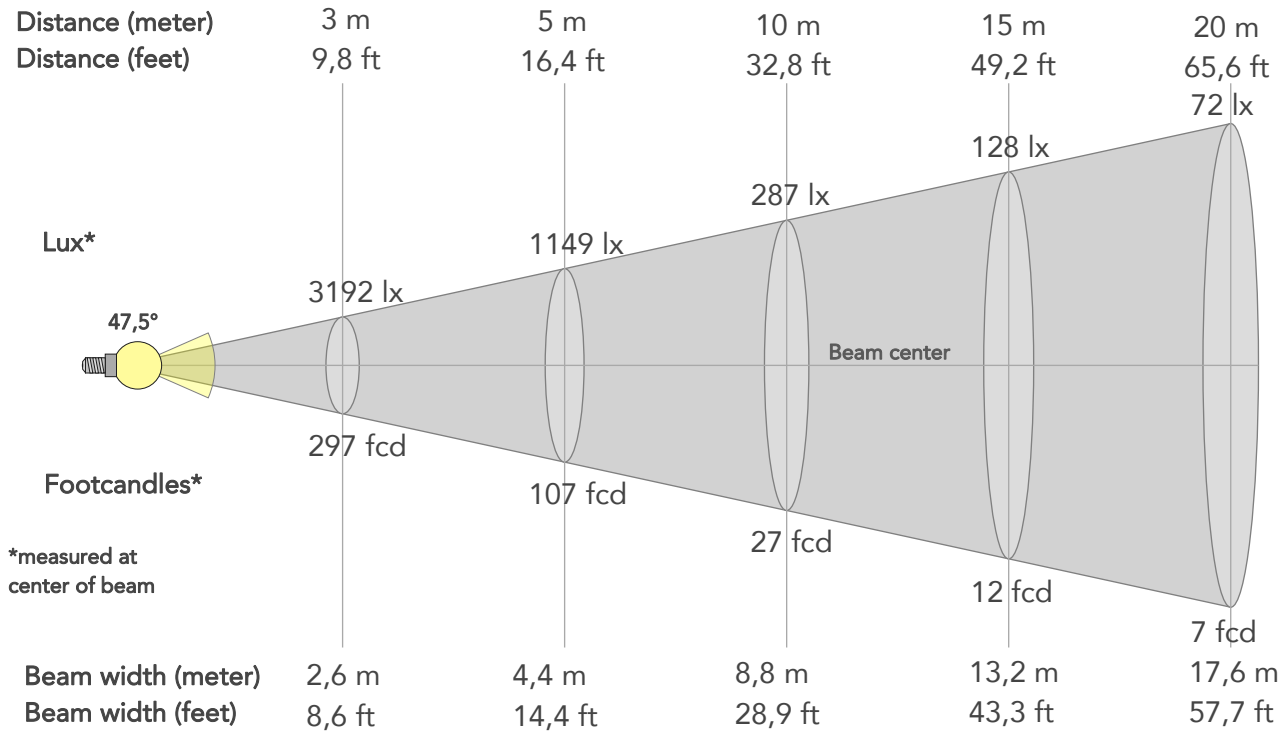
Hue Bin	R _f	Graphic shifts (%)	
		Chroma	Hue
1	97	1%	-1%
2	98	1%	-1%
3	98	1%	0%
4	98	0%	0%
5	96	0%	1%
6	96	2%	1%
7	97	2%	1%
8	96	1%	0%
9	97	1%	1%
10	98	0%	0%
11	94	2%	4%
12	93	3%	2%
13	96	3%	0%
14	96	3%	1%
15	94	3%	-3%
16	92	3%	-5%



BEAM DETAILS



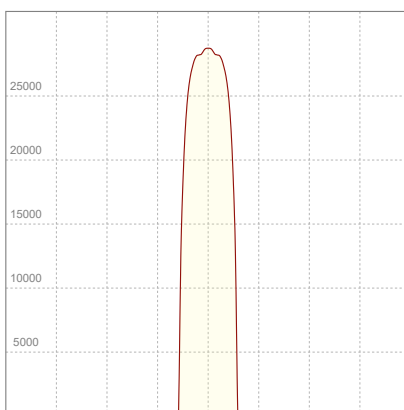
Beam angle 50%	Field angle 10%	Cut off angle 2,5%	Intensity ratio in 120° cone	Intensity ratio in 90° cone
47,5°	51,7°	52,5°	99,8%	99,7%



BEAM INTENSITIES AND WIDTHS

Distance	1m	2m	3m	4m	5m	7,5m	10m	15m	20m	25m	30m	40m	50m
Distance	3,3ft	6,6ft	9,8ft	13,1ft	16,4ft	24,6ft	32,8ft	49,2ft	65,6ft	82ft	98,4ft	131,2ft	164ft
Lux	28730lx	7183lx	3192lx	1796lx	1149lx	511lx	287lx	128lx	72lx	46lx	32lx	18lx	11lx
Footcand.	2669fcd	667fcd	297fcd	167fcd	107fcd	47fcd	27fcd	12fcd	7fcd	4fcd	3fcd	2fcd	1fcd
Beam wid.	0,9m	1,8m	2,6m	3,5m	4,4m	6,6m	8,8m	13,2m	17,6m	22m	26,4m	35,2m	44m
Beam wid.	2,9ft	5,8ft	8,6ft	11,5ft	14,4ft	21,7ft	28,9ft	43,3ft	57,7ft	72,2ft	86,6ft	115,5ft	144,4ft

LINEAR DISTRIBUTION DIAGRAM

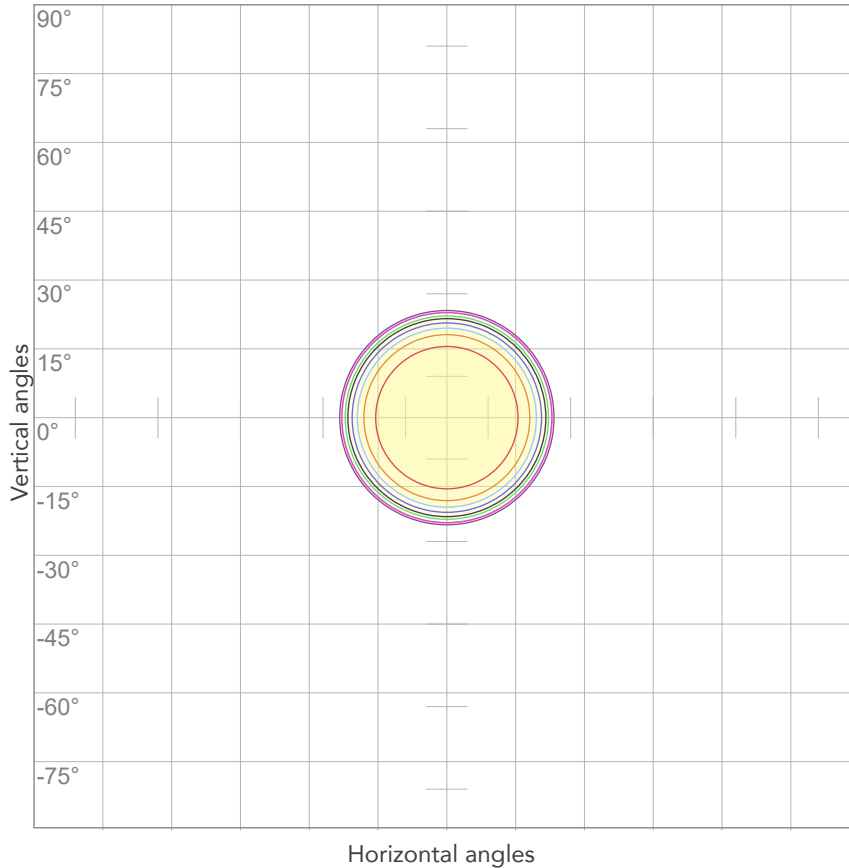


ELECTRICAL SPECIFICATIONS

Input voltage	Input current	Input power	Power FC	Efficiency
226V	2,01A	440,7W	0,97	32lm/W

ISO DIAGRAMS

ISO CANDELA DIAGRAM



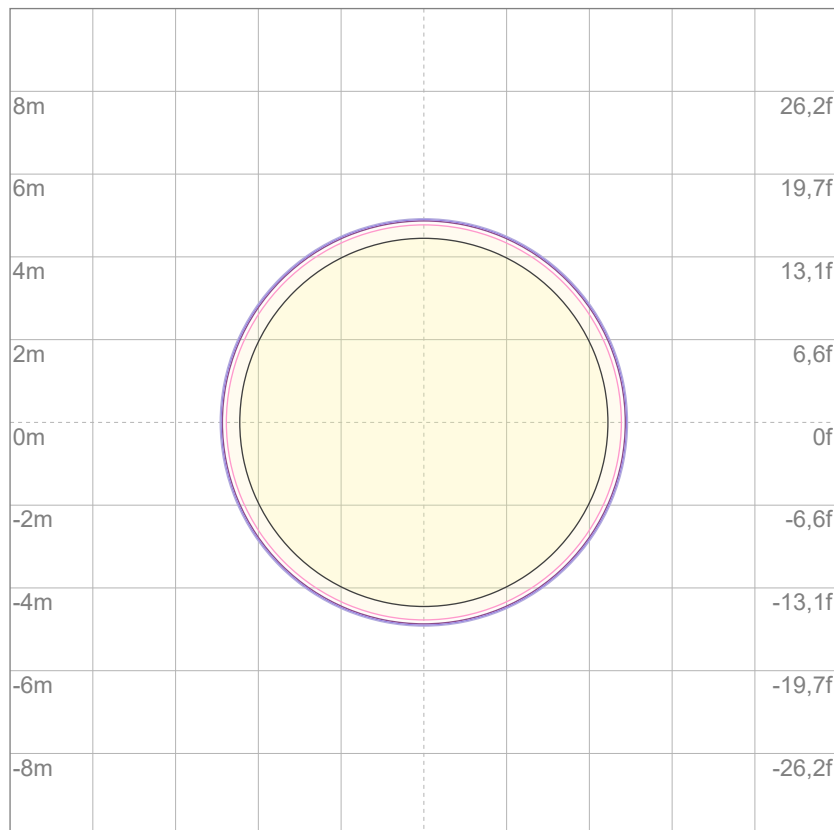
10%	2873 cd
20%	5746 cd
30%	8619 cd
40%	11492 cd
50%	14365 cd
60%	17238 cd
70%	20111 cd
80%	22984 cd

Conditions:

Number of c-planes: 2

Candela at center: 28730 cd

ISO LUX DIAGRAM



3%	8,62 lx
5%	14,4 lx
10%	28,7 lx
30%	86,2 lx
50%	144 lx

Conditions:

Number of c-planes: 2

Lux at center: 287 lx

Lux distribution on a surface when lamp is mounted at 10 meters from the surface.

Mounting height: 10 meters (33 feet)



Total lumen output:

15037 lm

Peak candela output:

30914 cd

Light quality:

CRI: 97,4

Color temperature:

5593 K

PRODUCT NAME:

ECLFWHPVW

MEASUREMENT CONDITIONS:

Beam angle:

PRL50

Target:

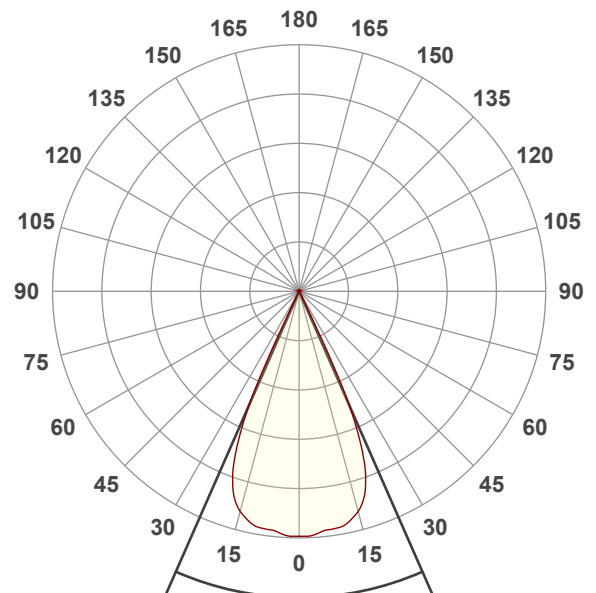
5600K

Operator:

Giuseppe della Peruta

Date and time:

07/01/2026 13:19:23

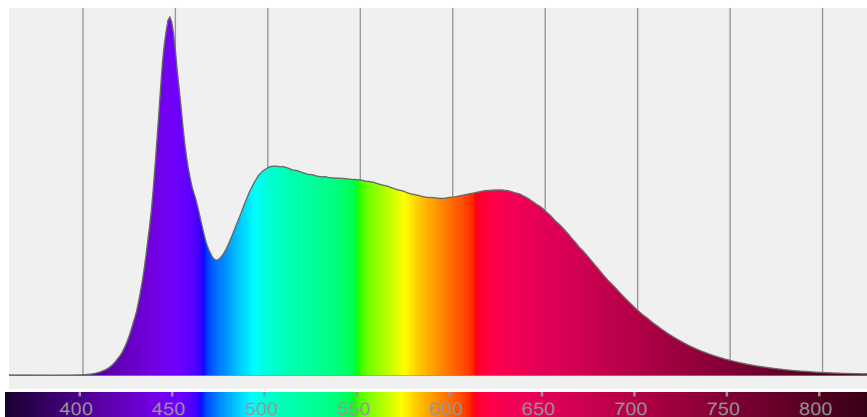


Beam angle 50%: 47,5°

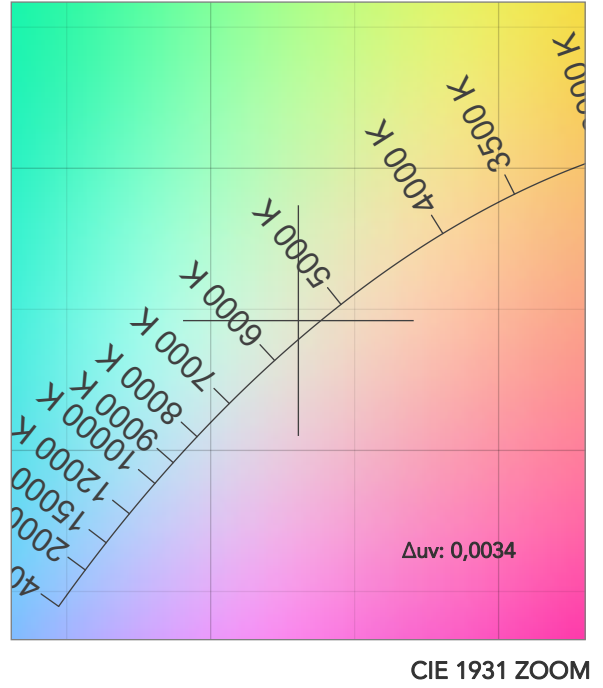
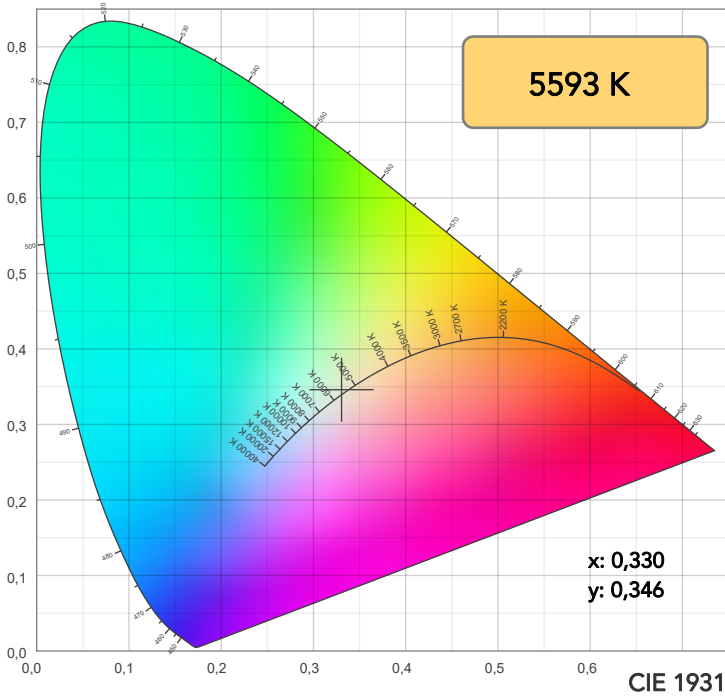
Field angle 10%: 51,7°

Cut off angle 2.5%: 52,4°

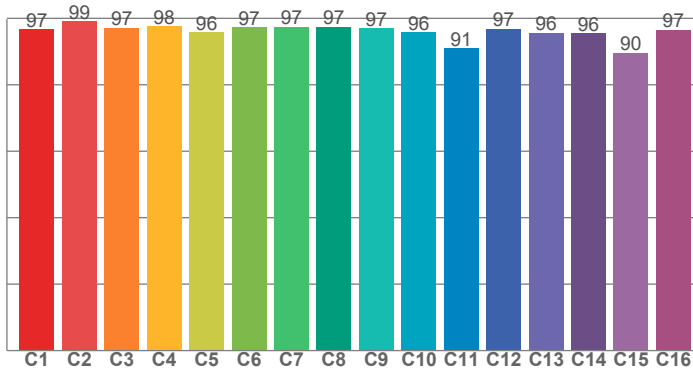
Spectra



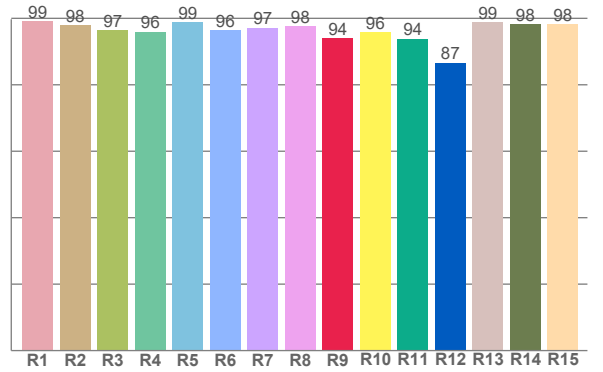
COLOR DETAILS



TM30: 95,9



CRI: 97,4 (R1-R8)



CRI R values, only R1-R8 are used to calculate final CRI value

R1	R2	R3	R4	R5	R6	R7	R8	R9	R10	R11	R12	R13	R14	R15
99,0	97,9	96,5	96,0	98,8	96,4	97,2	97,7	94,0	95,8	93,9	86,7	98,8	98,2	98,3

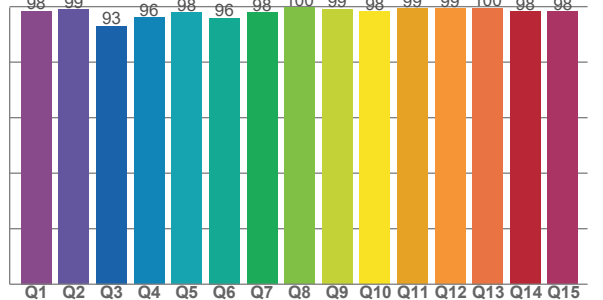
TM30 C values, 16 binned values out of total of 99 C values

C1	C2	C3	C4	C5	C6	C7	C8	C9	C10	C11	C12	C13	C14	C15	C16
96,6	99,0	97,2	97,7	95,9	97,3	97,4	97,4	97,0	95,8	91,1	96,8	95,7	95,5	89,6	96,6

CQS Q values

Q1	Q2	Q3	Q4	Q5	Q6	Q7	Q8	Q9	Q10	Q11	Q12	Q13	Q14	Q15
98,4	99,0	93,0	96,1	98,0	95,9	97,9	99,6	99,1	98,2	99,3	99,3	99,6	98,3	98,3

CQS: 97,4



COLOR PARAMETERS

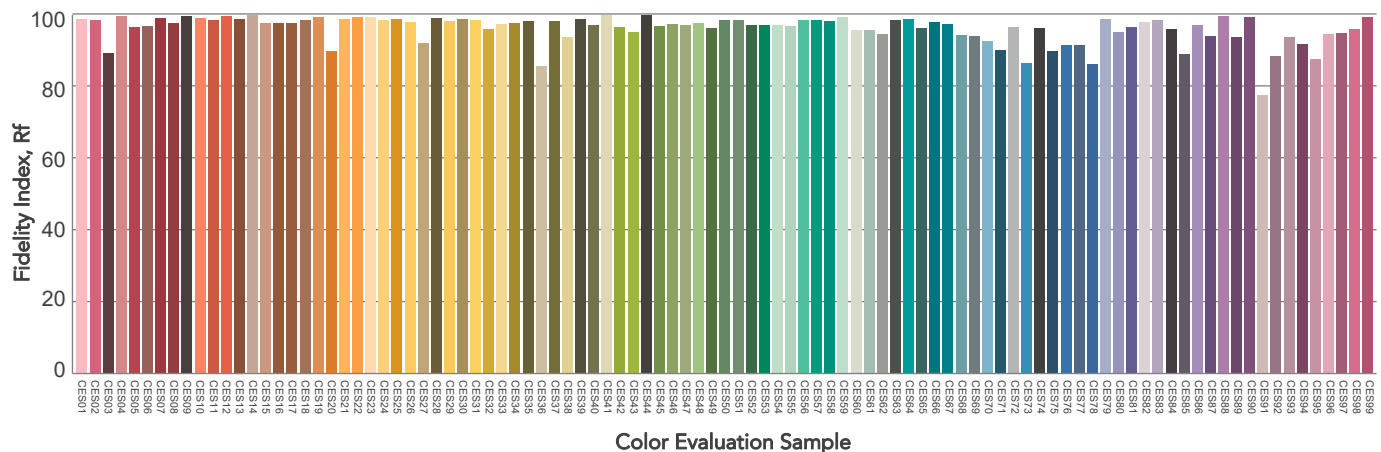
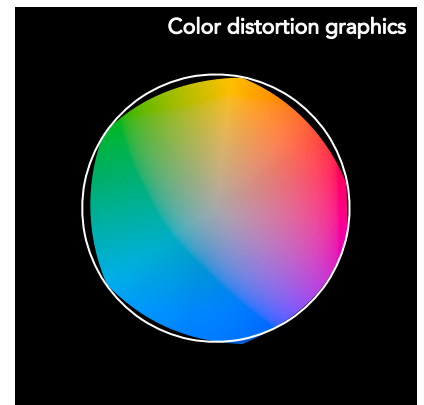
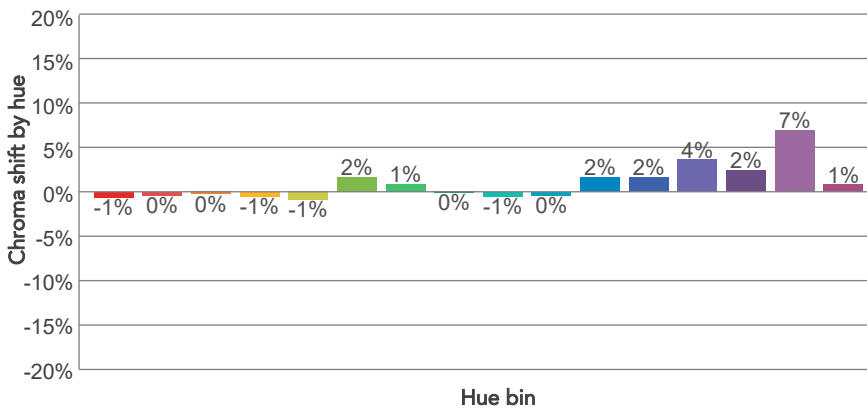
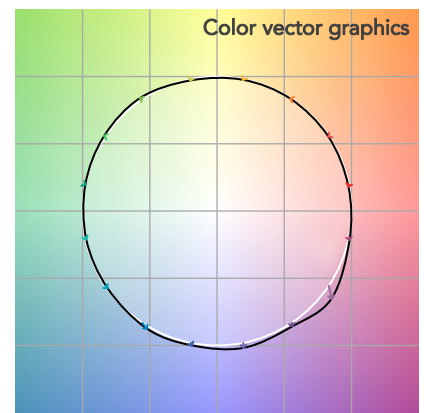
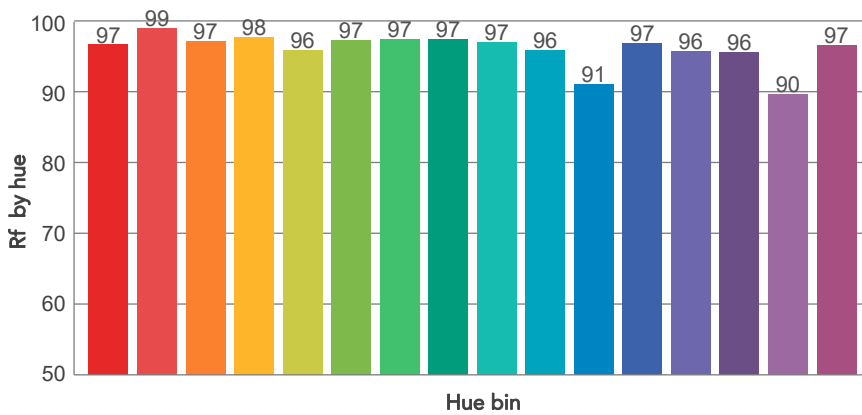
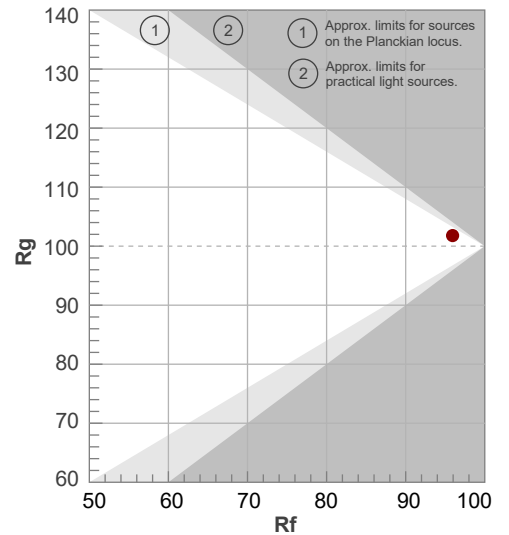
Color temperature	Color rendering index	Red component	Color fidelity	Color gamut	Color quality scale	Television lighting index	Color coordinate cie 1931	Color coordinate cie 1931	Color deviation from black body
CCT	CRI	CRI R9	TM30 Rf	TM30 Rg	CQS	TLCI	x	y	Δuv
5593 K	97,4	94,0	95,9	101,8	97,4	99	0,330	0,346	0,0034

TM30 DETAILS

Rf 95,9
Fidelity index Rf

Rg 101,8
Gammut index

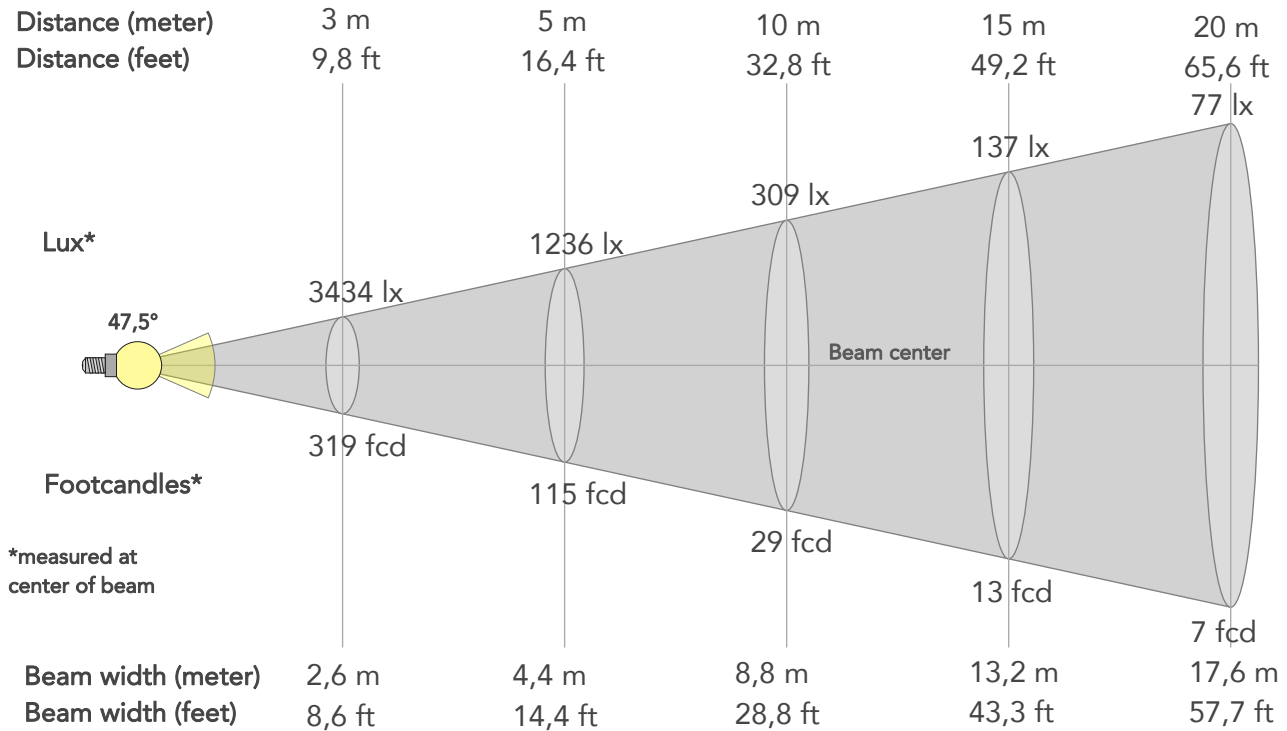
Hue Bin	R _f	Graphic shifts (%)	
		Chroma	Hue
1	97	-1%	-1%
2	99	0%	0%
3	97	0%	1%
4	98	-1%	0%
5	96	-1%	1%
6	97	2%	1%
7	97	1%	0%
8	97	0%	0%
9	97	-1%	2%
10	96	0%	2%
11	91	2%	5%
12	97	2%	1%
13	96	4%	0%
14	96	2%	-1%
15	90	7%	-7%
16	97	1%	-2%



BEAM DETAILS



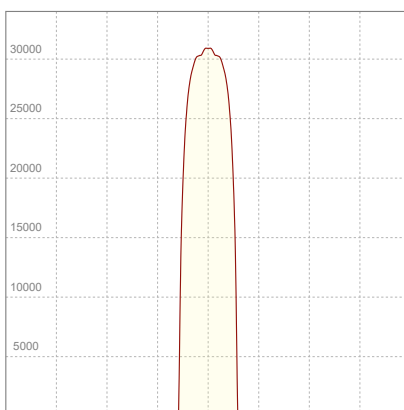
Beam angle 50%	Field angle 10%	Cut off angle 2,5%	Intensity ratio in 120° cone	Intensity ratio in 90° cone
47,5°	51,7°	52,4°	99,8%	99,7%



BEAM INTENSITIES AND WIDTHS

Distance	1m	2m	3m	4m	5m	7,5m	10m	15m	20m	25m	30m	40m	50m
Distance	3,3ft	6,6ft	9,8ft	13,1ft	16,4ft	24,6ft	32,8ft	49,2ft	65,6ft	82ft	98,4ft	131,2ft	164ft
Lux	30904lx	7726lx	3434lx	1931lx	1236lx	549lx	309lx	137lx	77lx	49lx	34lx	19lx	12lx
Footcand.	2871fcd	718fcd	319fcd	179fcd	115fcd	51fcd	29fcd	13fcd	7fcd	5fcd	3fcd	2fcd	1fcd
Beam wid.	0,9m	1,8m	2,6m	3,5m	4,4m	6,6m	8,8m	13,2m	17,6m	22m	26,4m	35,2m	44m
Beam wid.	2,9ft	5,8ft	8,6ft	11,5ft	14,4ft	21,6ft	28,8ft	43,3ft	57,7ft	72,1ft	86,5ft	115,4ft	144,2ft

LINEAR DISTRIBUTION DIAGRAM

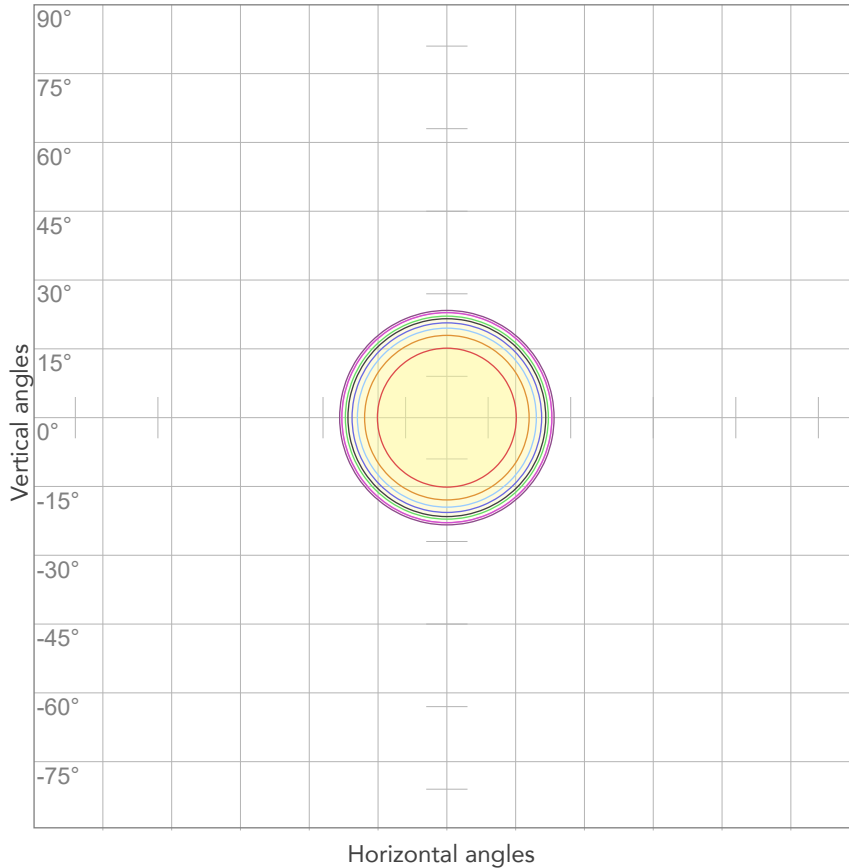


ELECTRICAL SPECIFICATIONS

Input voltage	Input current	Input power	Power FC	Efficiency
226V	2,00A	437,7W	0,97	34lm/W

ISO DIAGRAMS

ISO CANDELA DIAGRAM



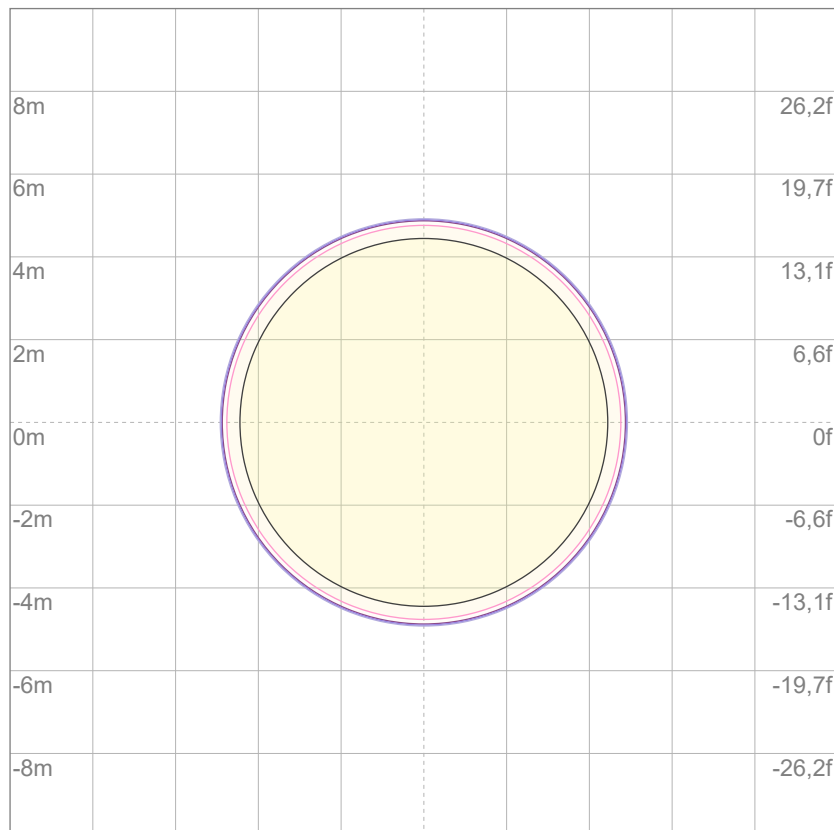
10%	3090 cd
20%	6181 cd
30%	9271 cd
40%	12361 cd
50%	15452 cd
60%	18542 cd
70%	21633 cd
80%	24723 cd

Conditions:

Number of c-planes: 2

Candela at center: 30904 cd

ISO LUX DIAGRAM



3%	9,27 lx
5%	15,5 lx
10%	30,9 lx
30%	92,7 lx
50%	155 lx

Conditions:

Number of c-planes: 2

Lux at center: 309 lx

Lux distribution on a surface when lamp is mounted at 10 meters from the surface.

Mounting height: 10 meters (33 feet)



Total lumen output:

14810 lm

Peak candela output:

30471 cd

Light quality:

CRI: 97,0

Color temperature:

5972 K

PRODUCT NAME:

ECLFWHPVW

MEASURAMENT CONDITIONS:

Beam angle:

PRL50

Target:

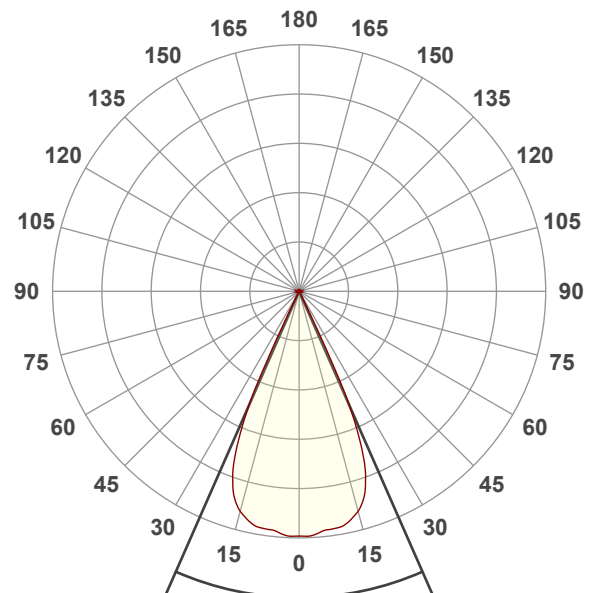
6000K

Operator:

Giuseppe della Peruta

Date and time:

07/01/2026 13:22:41

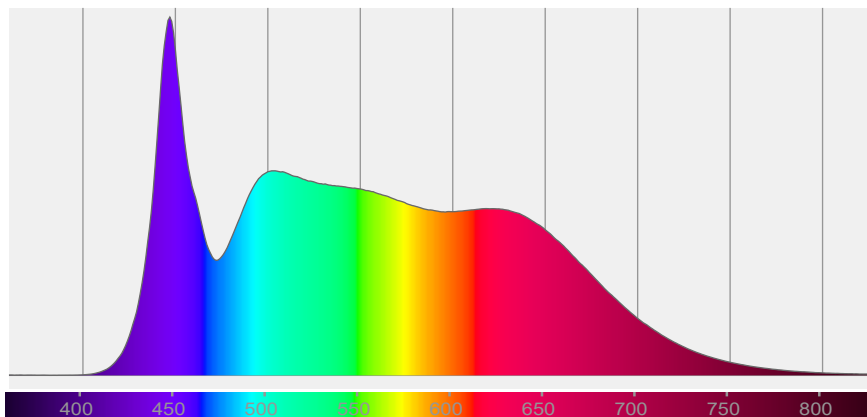


Beam angle 50%: 47,5°

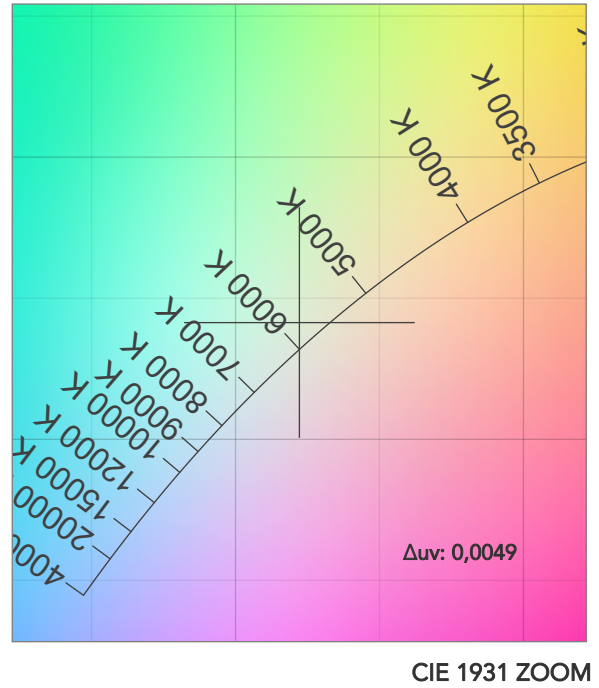
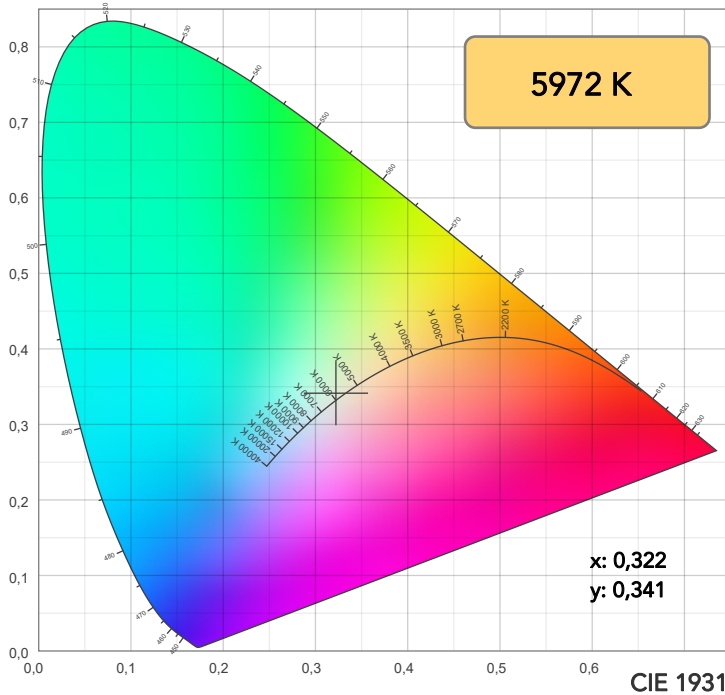
Field angle 10%: 51,7°

Cut off angle 2.5%: 52,5°

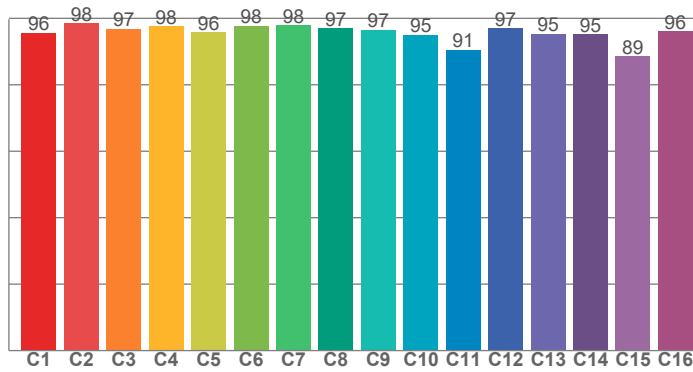
Spectra



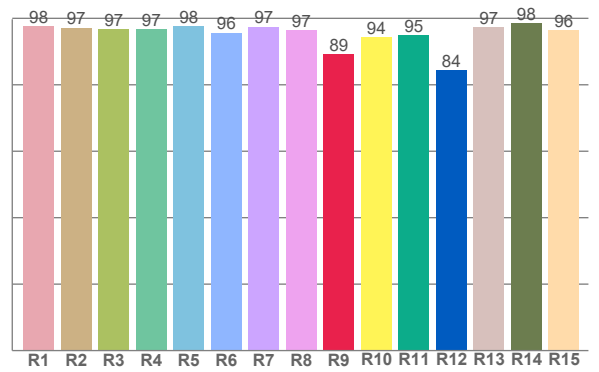
COLOR DETAILS



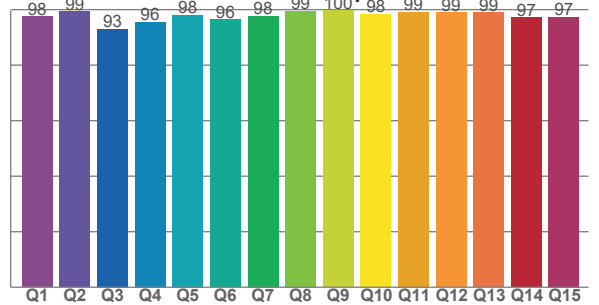
TM30: 95,6



CRI: 97,0 (R1-R8)



CQS: 97,2



CRI R values, only R1-R8 are used to calculate final CRI value

R1	R2	R3	R4	R5	R6	R7	R8	R9	R10	R11	R12	R13	R14	R15
97,7	97,2	96,8	96,7	97,6	95,7	97,5	96,5	89,3	94,4	94,8	84,5	97,4	98,5	96,4

TM30 C values, 16 binned values out of total of 99 C values

C1	C2	C3	C4	C5	C6	C7	C8	C9	C10	C11	C12	C13	C14	C15	C16
95,7	98,5	96,9	97,6	95,8	97,7	97,9	97,1	96,5	95,0	90,5	97,0	95,4	95,2	88,6	96,2

CQS Q values

Q1	Q2	Q3	Q4	Q5	Q6	Q7	Q8	Q9	Q10	Q11	Q12	Q13	Q14	Q15
97,5	99,3	93,0	95,6	98,0	96,4	97,8	99,4	99,6	98,5	99,1	98,9	99,0	97,2	97,3

COLOR PARAMETERS

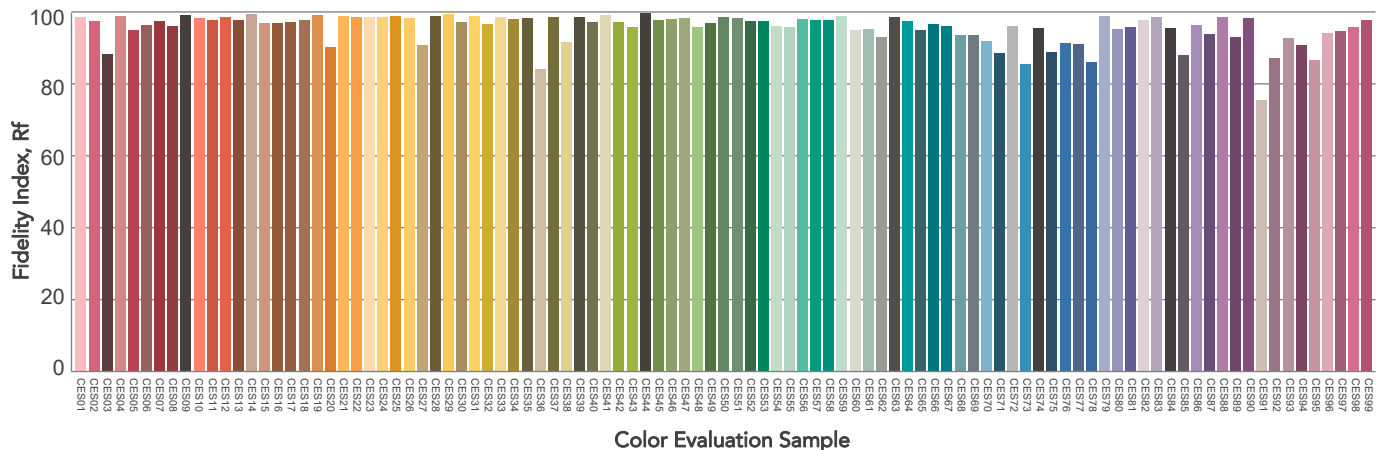
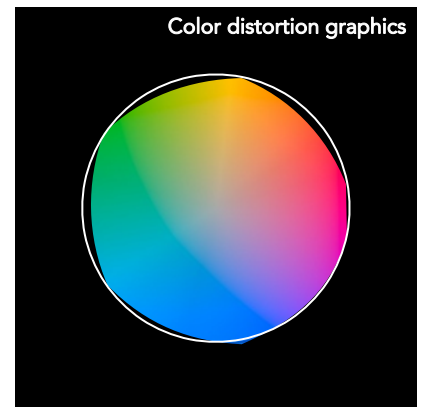
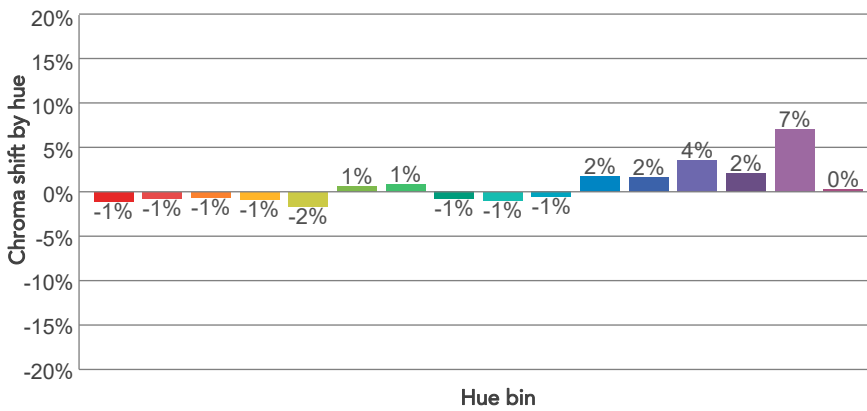
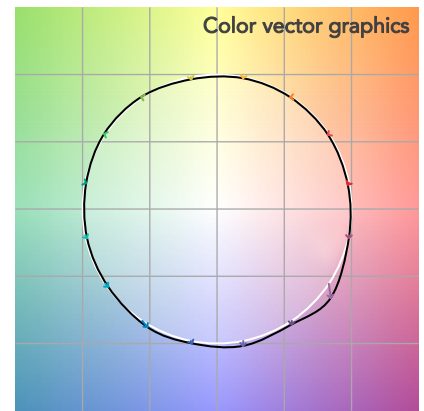
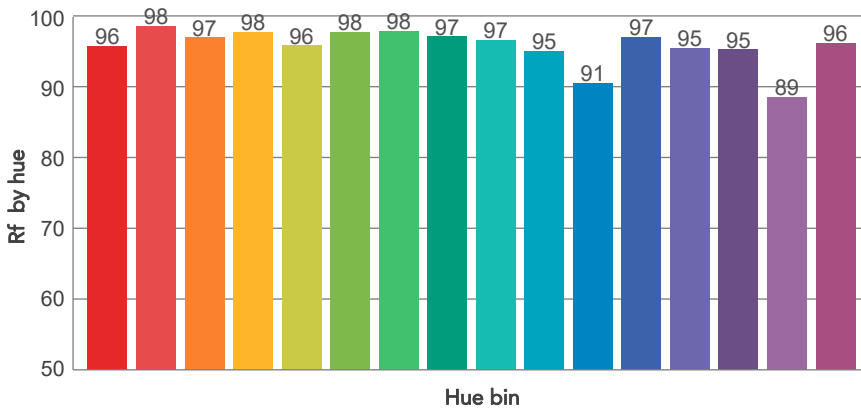
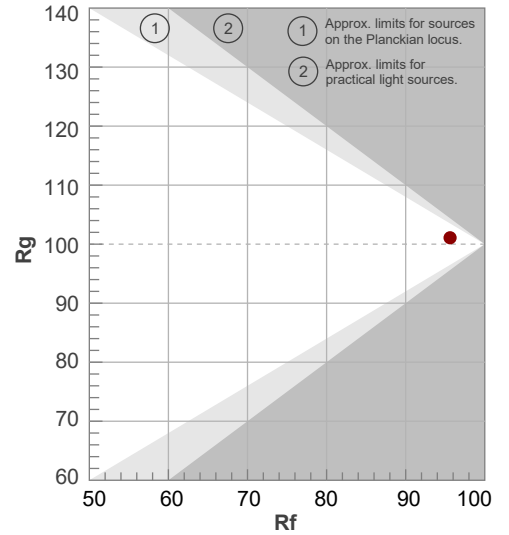
Color temperature	Color rendering index	Red component	Color fidelity	Color gamut	Color quality scale	Television lighting index	Color coordinate cie 1931	Color coordinate cie 1931	Color deviation from black body
CCT	CRI	CRI R9	TM30 Rf	TM30 Rg	CQS	TLCI	x	y	Δuv
5972 K	97,0	89,3	95,6	101,1	97,2	99	0,322	0,341	0,0049

TM30 DETAILS

Rf 95,6
Fidelity index Rf

Rg 101,1
Gammut index

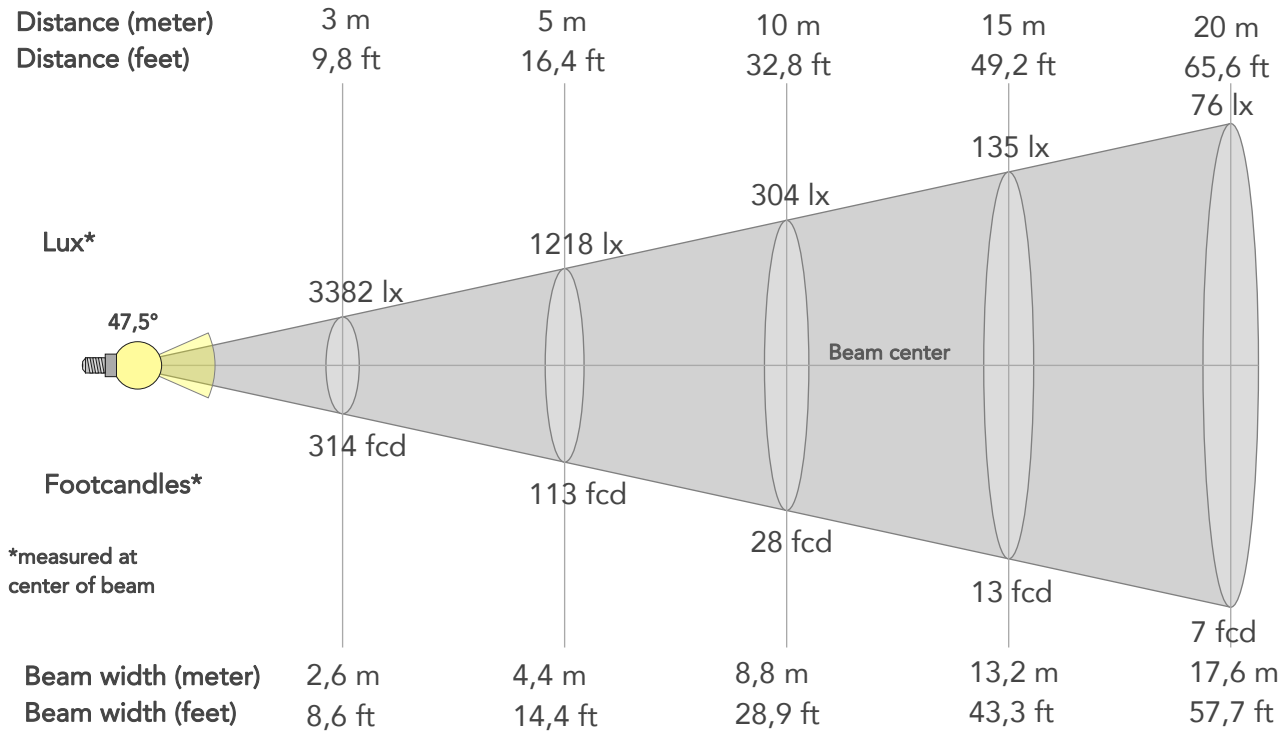
Hue Bin	R _f	Graphic shifts (%)	
		Chroma	Hue
1	96	-1%	-1%
2	98	-1%	0%
3	97	-1%	1%
4	98	-1%	0%
5	96	-2%	0%
6	98	1%	1%
7	98	1%	0%
8	97	-1%	0%
9	97	-1%	2%
10	95	-1%	3%
11	91	2%	6%
12	97	2%	1%
13	95	4%	-1%
14	95	2%	-2%
15	89	7%	-8%
16	96	0%	-2%



BEAM DETAILS



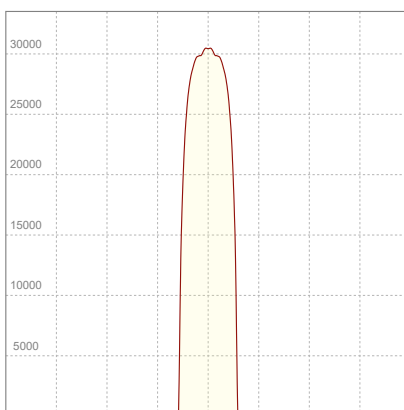
Beam angle 50%	Field angle 10%	Cut off angle 2,5%	Intensity ratio in 120° cone	Intensity ratio in 90° cone
47,5°	51,7°	52,5°	99,8%	99,7%



BEAM INTENSITIES AND WIDTHS

Distance	1m	2m	3m	4m	5m	7,5m	10m	15m	20m	25m	30m	40m	50m
Distance	3,3ft	6,6ft	9,8ft	13,1ft	16,4ft	24,6ft	32,8ft	49,2ft	65,6ft	82ft	98,4ft	131,2ft	164ft
Lux	30440lx	7610lx	3382lx	1902lx	1218lx	541lx	304lx	135lx	76lx	49lx	34lx	19lx	12lx
Footcand.	2828fcd	707fcd	314fcd	177fcd	113fcd	50fcd	28fcd	13fcd	7fcd	5fcd	3fcd	2fcd	1fcd
Beam wid.	0,9m	1,8m	2,6m	3,5m	4,4m	6,6m	8,8m	13,2m	17,6m	22m	26,4m	35,2m	44m
Beam wid.	2,9ft	5,8ft	8,6ft	11,5ft	14,4ft	21,6ft	28,9ft	43,3ft	57,7ft	72,1ft	86,6ft	115,4ft	144,3ft

LINEAR DISTRIBUTION DIAGRAM

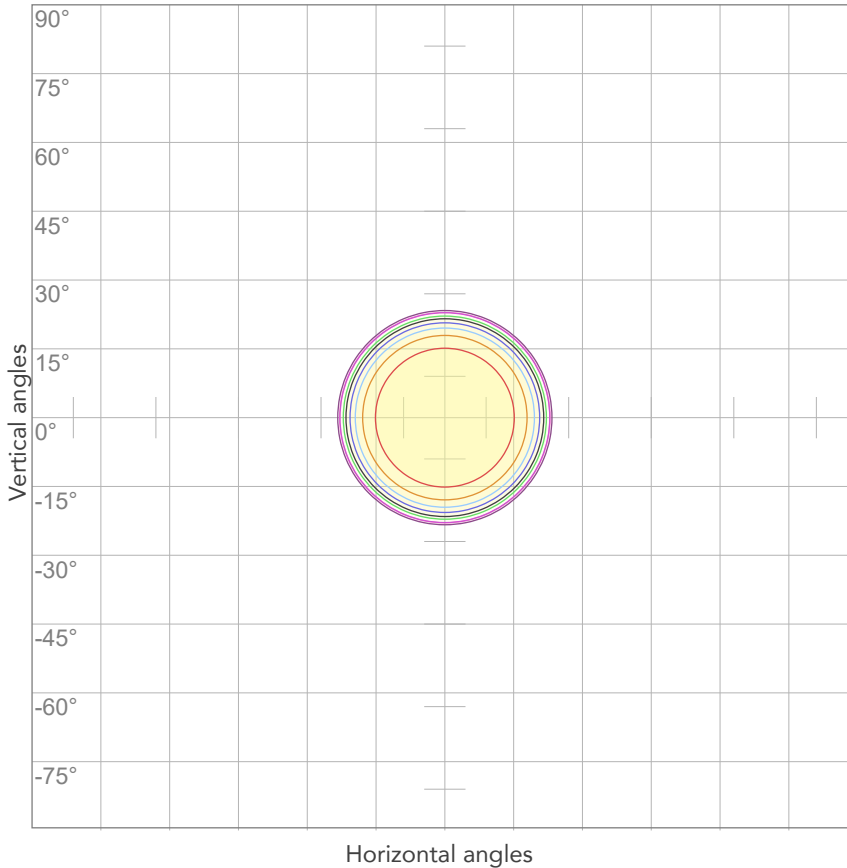


ELECTRICAL SPECIFICATIONS

Input voltage	Input current	Input power	Power FC	Efficiency
226V	1,95A	425,1W	0,97	35lm/W

ISO DIAGRAMS

ISO CANDELA DIAGRAM



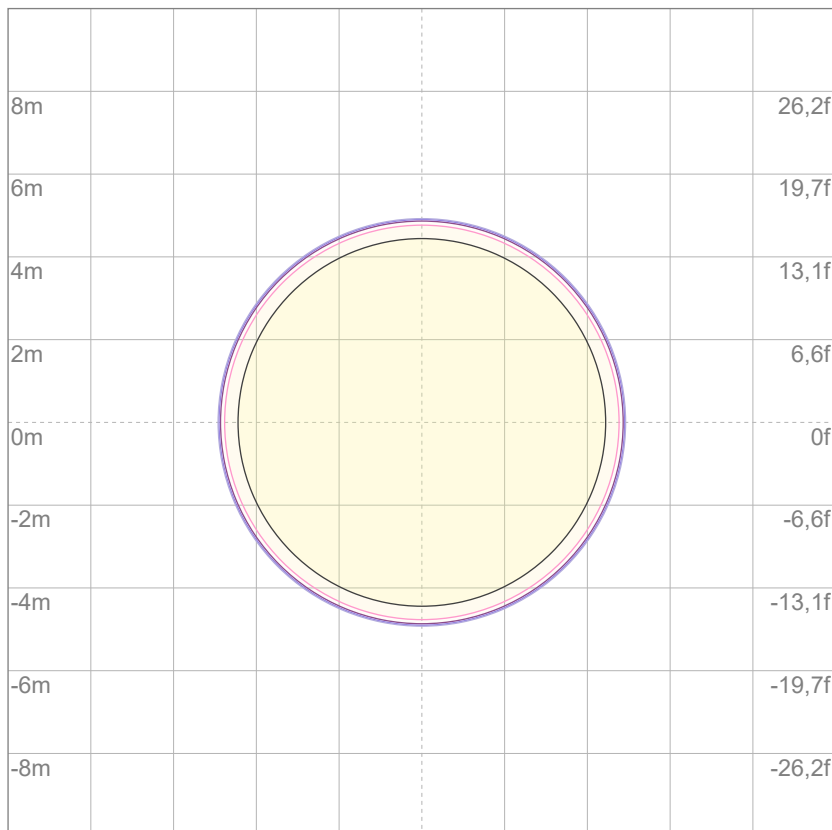
10%	3044 cd
20%	6088 cd
30%	9132 cd
40%	12176 cd
50%	15220 cd
60%	18264 cd
70%	21308 cd
80%	24352 cd

Conditions:

Number of c-planes: 2

Candela at center: 30440 cd

ISO LUX DIAGRAM



Mounting height: 10 meters (33 feet)

3%	9,13 lx
5%	15,2 lx
10%	30,4 lx
30%	91,3 lx
50%	152 lx

Conditions:

Number of c-planes: 2

Lux at center: 304 lx

Lux distribution on a surface when lamp is mounted at 10 meters from the surface.