



Photometric Test Report



EclProfile FWHPVW

450W high quality VariableWhite LED
ellipsoidal, compatible with PRL and PRLZ lenses

(ECLPRL05BK)

CONTENTS

Table of contents	2
Testing process	3
PRL 05° Lens:	
Full On	4
Warm White	9
Cold White	14
2800K	19
3200K	24
4000K	29
5600K	34
6000K	39

TESTING PROCESS

Prolights has its own optical testing laboratory in order to provide accurate photometric reports for its lighting products. The testing laboratory contains certain variety of precise lighting measurement systems that ensure an optimal reading of all the characteristic parameters of the lighting devices. All measurements are made at a controlled room temperature of 20°C without any external light sources. This photometric report is obtained through the data measured by a high precision measurement system and analyzed by a dedicate software.

Prolights measurement instrument

Prolights measurement instrument is a complete measurement system for any light source. It's equipped with two-axis goniometer, that enables to measure the full 3D distribution field of the light source. This instrument measures the light intensity, the beam angle and the most significative colors parameters, like color temperature, spectral distribution, CRI, CQS, TM-30 with a very high accuracy rate.

Please Note: All measurements are made with light source at operating temperature. Before starting the measurement, the instrument analyzes the process of the light source during the heating phase. The measuring process of all the parameters begins only when the light emission is stable, that is with a variation of less than 0.5% in a 15 minutes time frame.

Prolights measurement software

The software provides user friendly interface for the operator who does the measurements, and it also analyzes and processes all the collected data by the instrument. With this software it is possible to see the measured data in real-time and it is possible to examine all the measured data and graphics afterwards as well. All information is collected in a specific Prolights template, and the software creates also IES and LDT files, which are widely used to transfer the photometric data, and to develop lighting system.

Additionally, the fixtures are rechecked using various hand-held instruments like Sekonic C-700 and Gossen Mavospec Base, this is done to ensure, that the data in the photometric report are as accurate as possible.



Total lumen output:

8216 lm

Peak candela output:

1029170 cd

Light quality:

CRI: 97,8

Color temperature:

4217 K

PRODUCT NAME:

ECLFWHPVW

MEASURAMENT CONDITIONS:

Beam angle:

PRL05

Target:

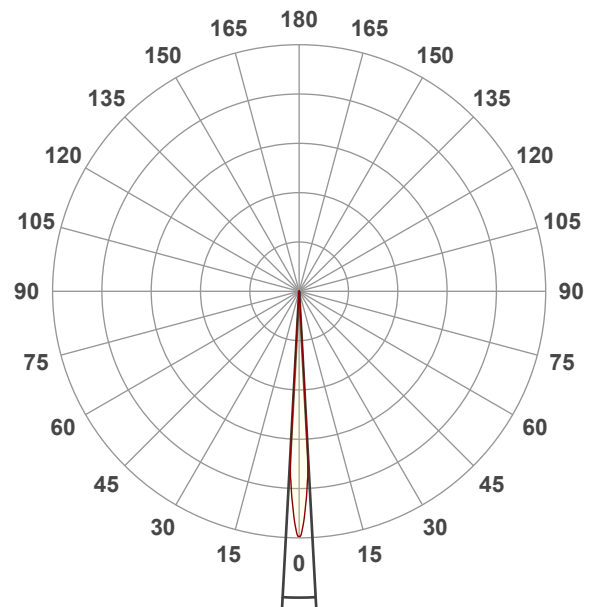
Full On

Operator:

Giuseppe della Peruta

Date and time:

09/01/2026 10:10:36

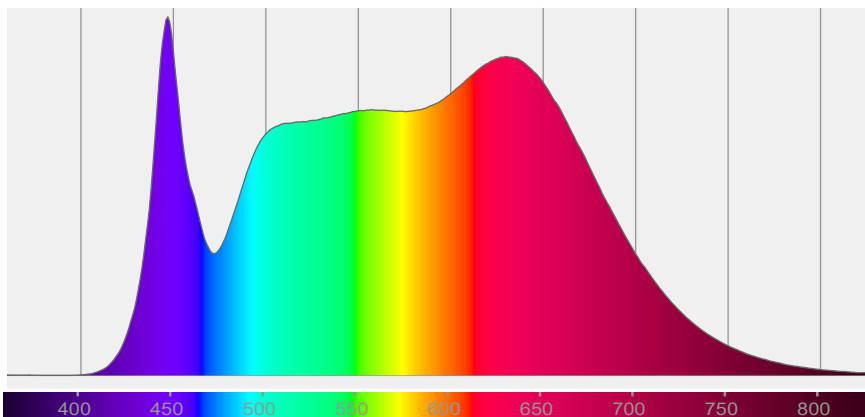


Beam angle 50%: 6,2°

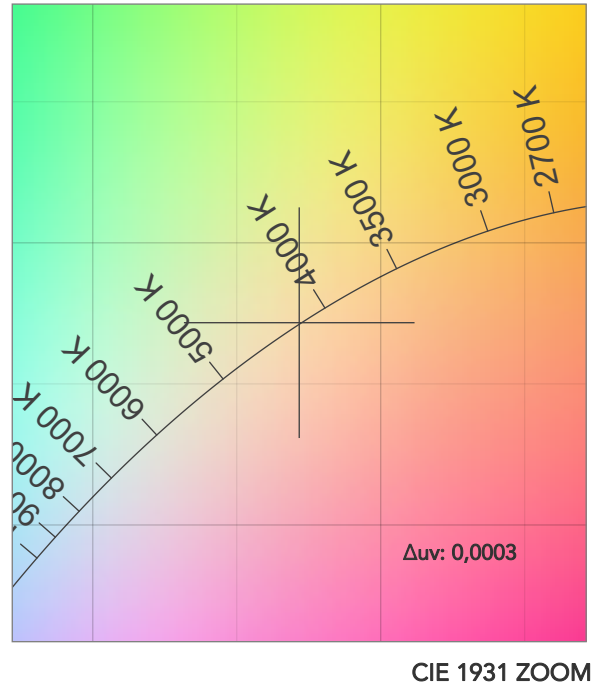
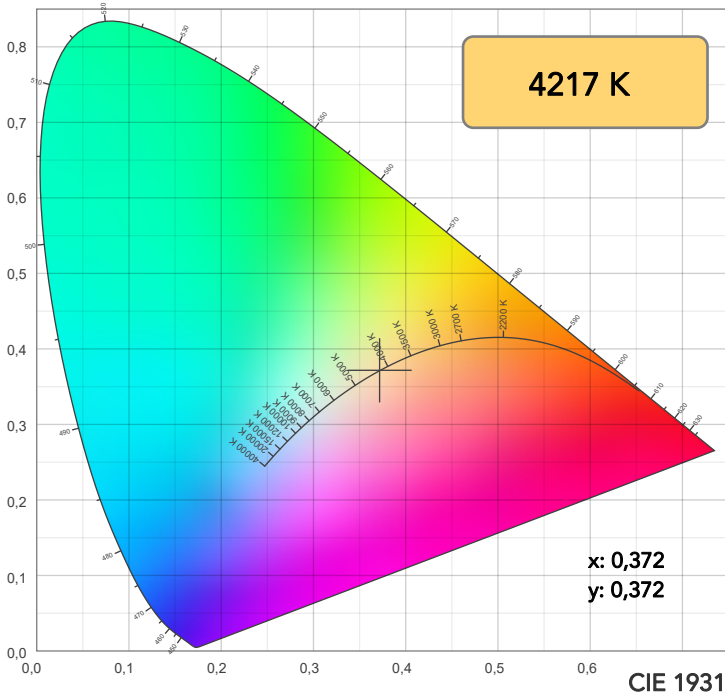
Field angle 10%: 6,8°

Cut off angle 2.5%: 7°

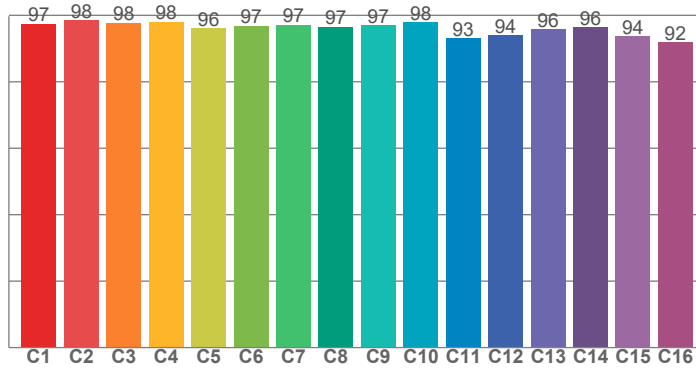
Spectra



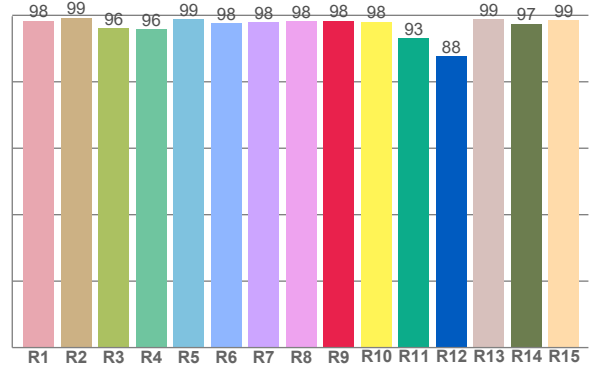
COLOR DETAILS



TM30: 96,2



CRI: 97,8 (R1-R8)



CRI R values, only R1-R8 are used to calculate final CRI value

R1	R2	R3	R4	R5	R6	R7	R8	R9	R10	R11	R12	R13	R14	R15
98,4	99,3	96,0	95,8	98,8	97,7	98,0	98,2	98,4	98,1	93,1	87,7	98,9	97,5	98,6

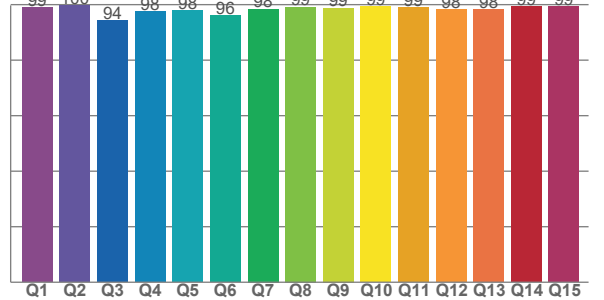
TM30 C values, 16 binned values out of total of 99 C values

C1	C2	C3	C4	C5	C6	C7	C8	C9	C10	C11	C12	C13	C14	C15	C16
97,4	98,5	97,7	98,0	96,1	96,9	97,1	96,5	96,9	97,9	93,0	94,0	95,8	96,4	93,7	91,8

CQS Q values

Q1	Q2	Q3	Q4	Q5	Q6	Q7	Q8	Q9	Q10	Q11	Q12	Q13	Q14	Q15
99,0	99,6	94,4	97,6	97,9	96,0	98,3	99,1	98,8	99,3	99,0	98,2	98,3	99,4	99,3

CQS: 97,8



COLOR PARAMETERS

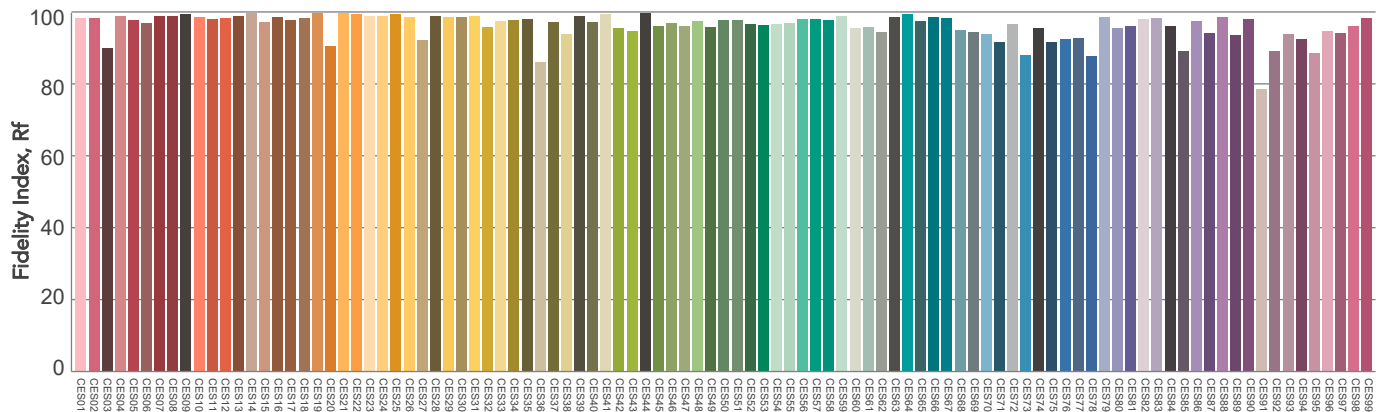
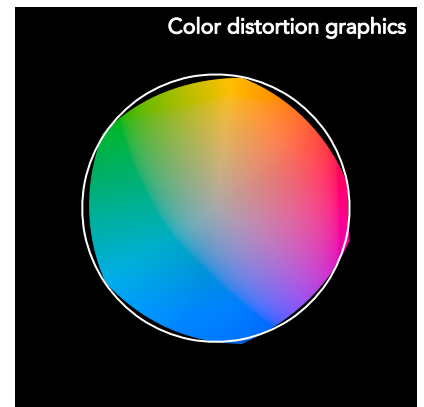
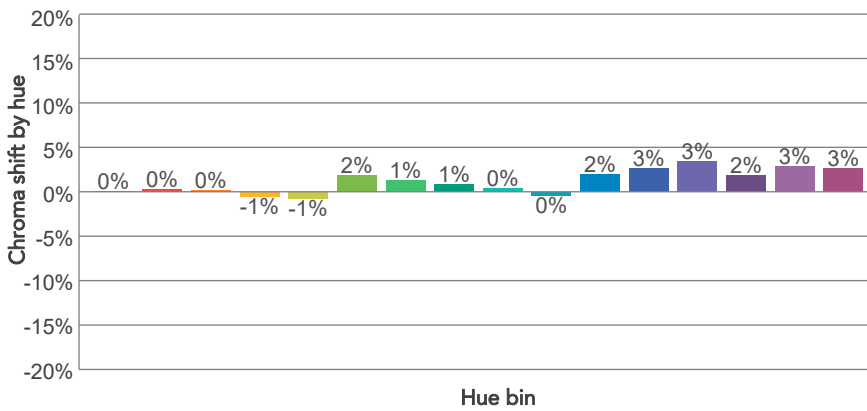
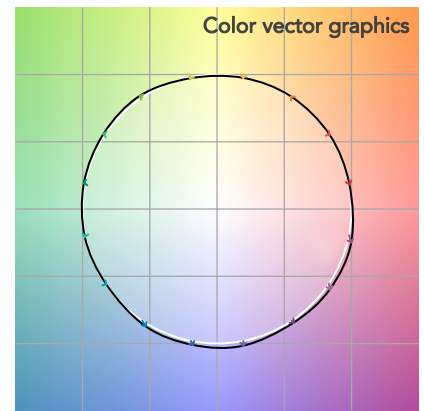
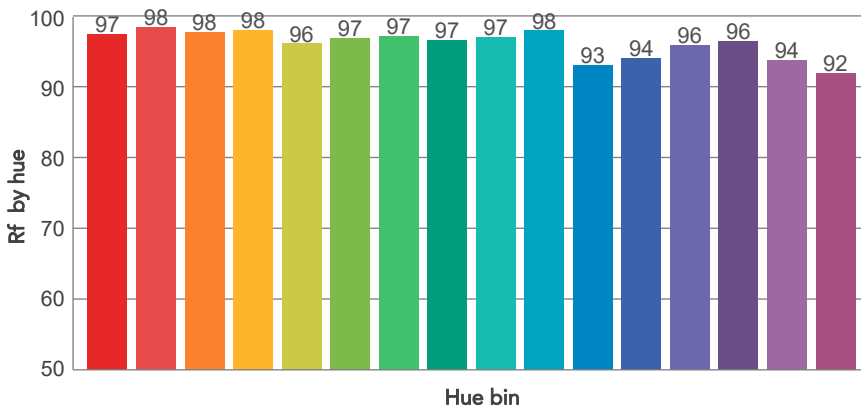
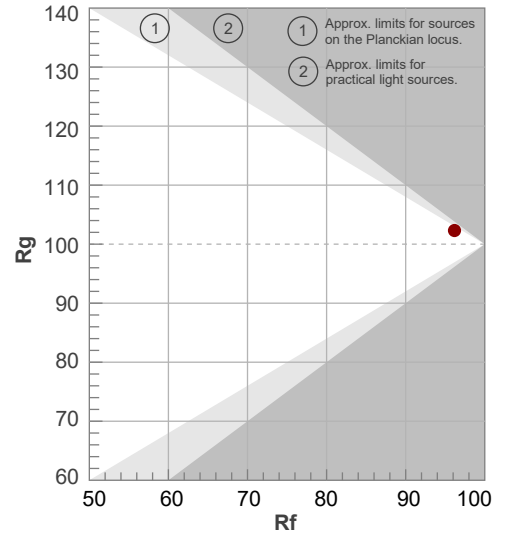
Color temperature	Color rendering index	Red component	Color fidelity	Color gamut	Color quality scale	Television lighting index	Color coordinate cie 1931	Color coordinate cie 1931	Color deviation from black body
CCT	CRI	CRI R9	TM30 Rf	TM30 Rg	CQS	TLCI	x	y	Δuv
4217 K	97,8	98,4	96,2	102,3	97,8	99	0,372	0,372	0,0003

TM30 DETAILS

Rf 96,2
Fidelity index Rf

Rg 102,3
Gammut index

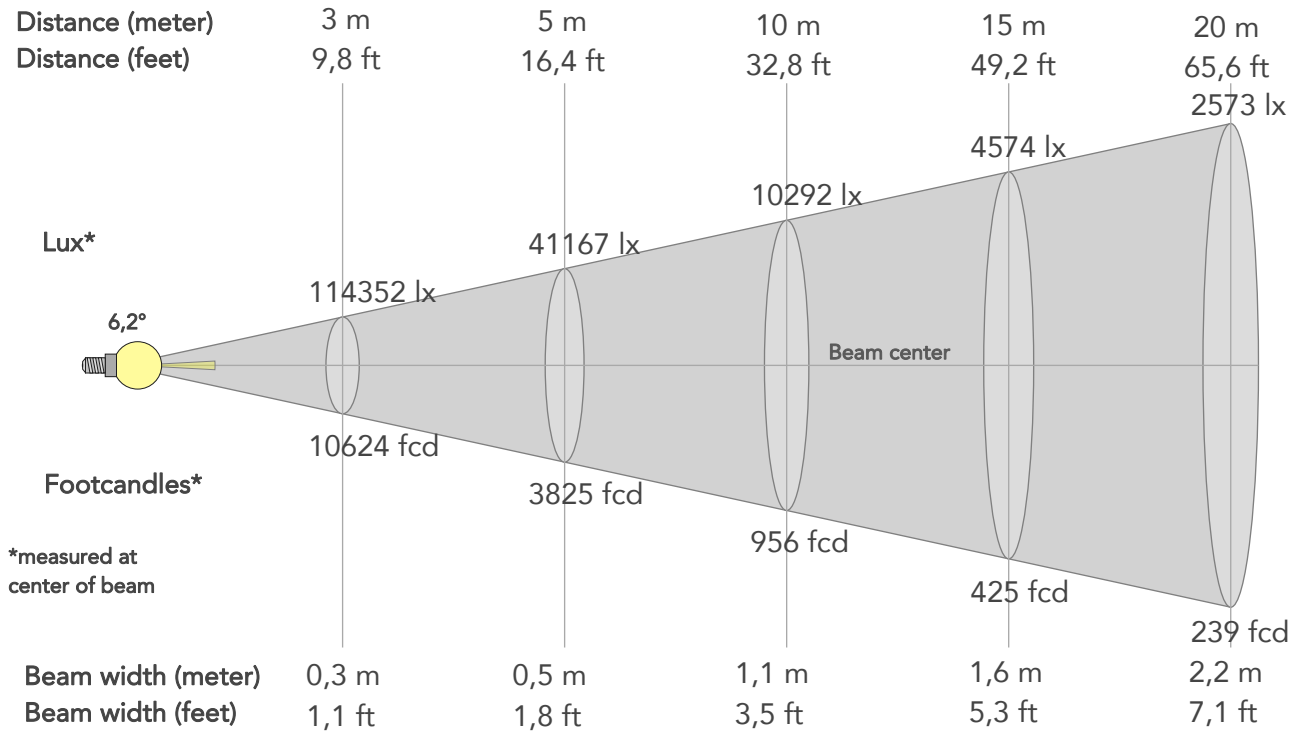
Hue Bin	R _f	Graphic shifts (%)	
		Chroma	Hue
1	97	0%	-1%
2	98	0%	-1%
3	98	0%	1%
4	98	-1%	0%
5	96	-1%	1%
6	97	2%	1%
7	97	1%	1%
8	97	1%	0%
9	97	0%	1%
10	98	0%	1%
11	93	2%	4%
12	94	3%	2%
13	96	3%	-1%
14	96	2%	0%
15	94	3%	-3%
16	92	3%	-5%



BEAM DETAILS



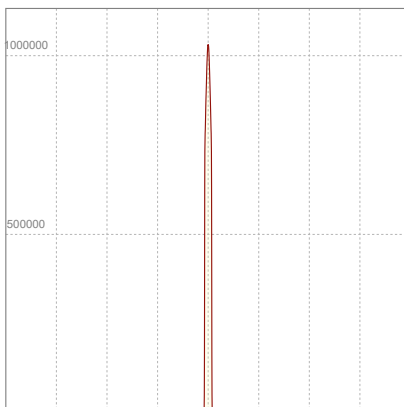
Beam angle 50%	Field angle 10%	Cut off angle 2,5%	Intensity ratio in 120° cone	Intensity ratio in 90° cone
6,2°	6,8°	7°	100,0%	100,0%



BEAM INTENSITIES AND WIDTHS

Distance	1m	2m	3m	4m	5m	7,5m	10m	15m	20m	25m	30m	40m	50m
Distance	3,3ft	6,6ft	9,8ft	13,1ft	16,4ft	24,6ft	32,8ft	49,2ft	65,6ft	82ft	98,4ft	131,2ft	164ft
Lux	1029170lx	257293lx	114352lx	64323lx	41167lx	18296lx	10292lx	4574lx	2573lx	1647lx	1144lx	643lx	412lx
Footcand.	95613fcd	23903fcd	10624fcd	5976fcd	3825fcd	1700fcd	956fcd	425fcd	239fcd	153fcd	106fcd	60fcd	38fcd
Beam wid.	0,1m	0,2m	0,3m	0,4m	0,5m	0,8m	1,1m	1,6m	2,2m	2,7m	3,2m	4,3m	5,4m
Beam wid.	0,4ft	0,7ft	1,1ft	1,4ft	1,8ft	2,7ft	3,5ft	5,3ft	7,1ft	8,9ft	10,6ft	14,2ft	17,7ft

LINEAR DISTRIBUTION DIAGRAM

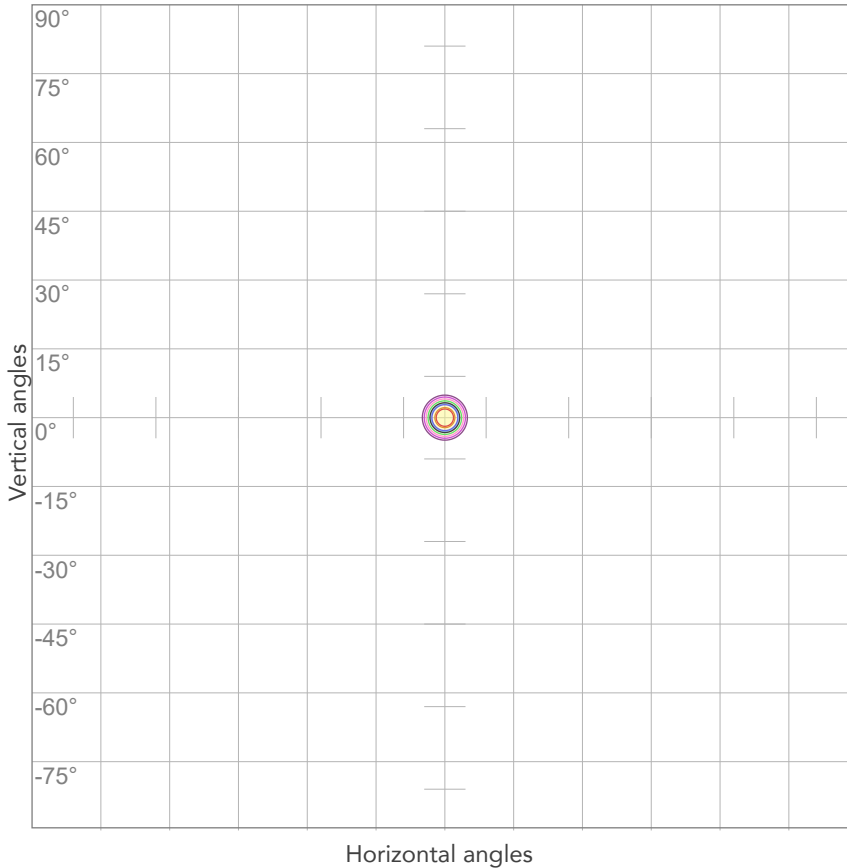


ELECTRICAL SPECIFICATIONS

Input voltage	Input current	Input power	Power FC	Efficiency
225V	2,01A	438,2W	0,97	19lm/W

ISO DIAGRAMS

ISO CANDELA DIAGRAM



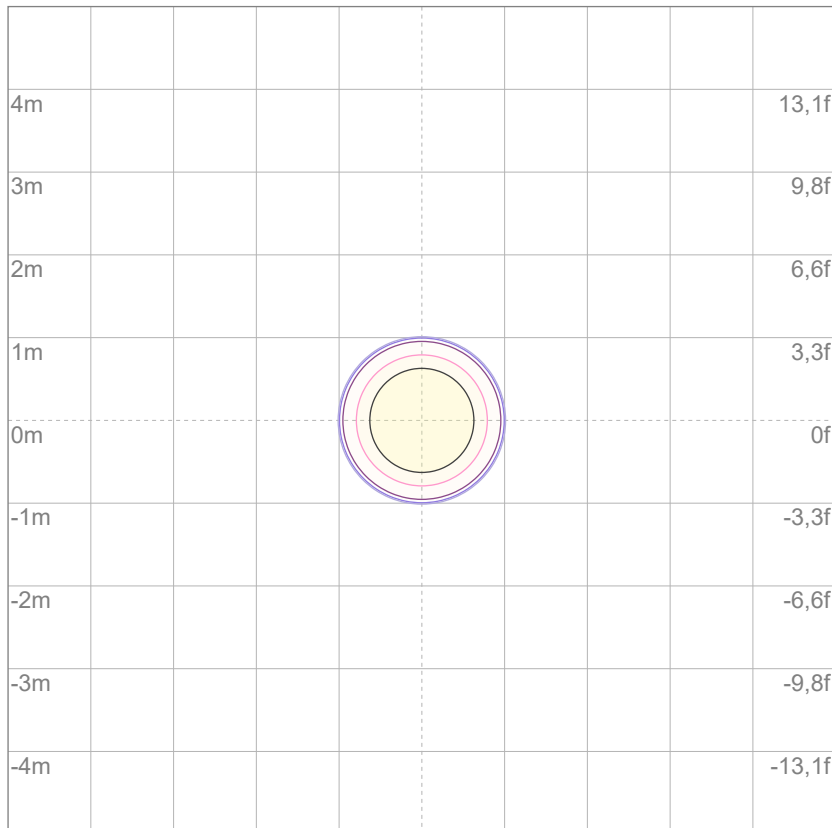
10%	102917 cd
20%	205834 cd
30%	308751 cd
40%	411668 cd
50%	514585 cd
60%	617502 cd
70%	720419 cd
80%	823336 cd

Conditions:

Number of c-planes: 2

Candela at center: 1029170 cd

ISO LUX DIAGRAM



3%	309 lx
5%	515 lx
10%	1029 lx
30%	3088 lx
50%	5146 lx

Conditions:

Number of c-planes: 2

Lux at center: 10,3K lx

Lux distribution on a surface when lamp is mounted at 10 meters from the surface.

Mounting height: 10 meters (33 feet)



Total lumen output:

6659 lm

Peak candela output:

800062 cd

Light quality:

CRI: 96,9

Color temperature:

2634 K

PRODUCT NAME:

ECLFWHPVW

MEASUREMENT CONDITIONS:

Beam angle:

PRL05

Target:

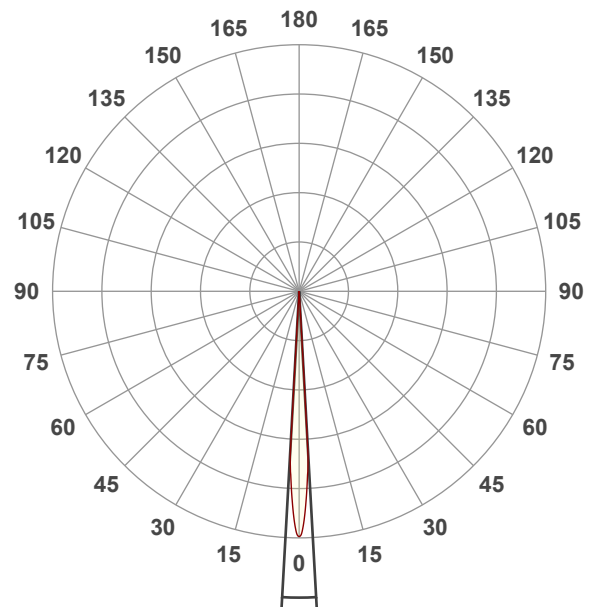
Warm White

Operator:

Giuseppe della Peruta

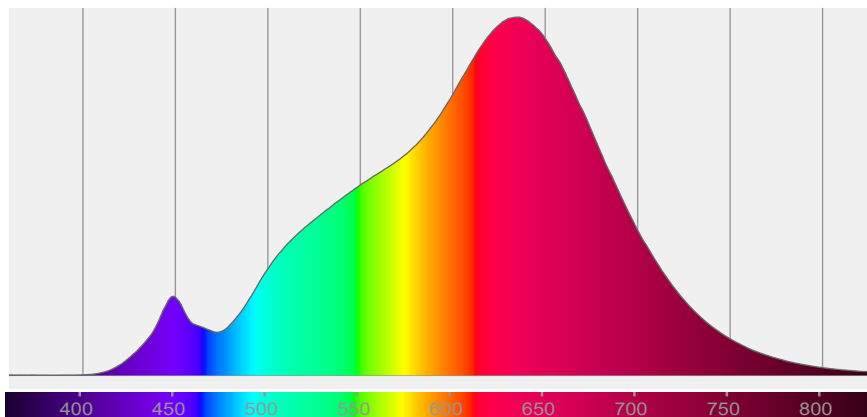
Date and time:

09/01/2026 10:14:53

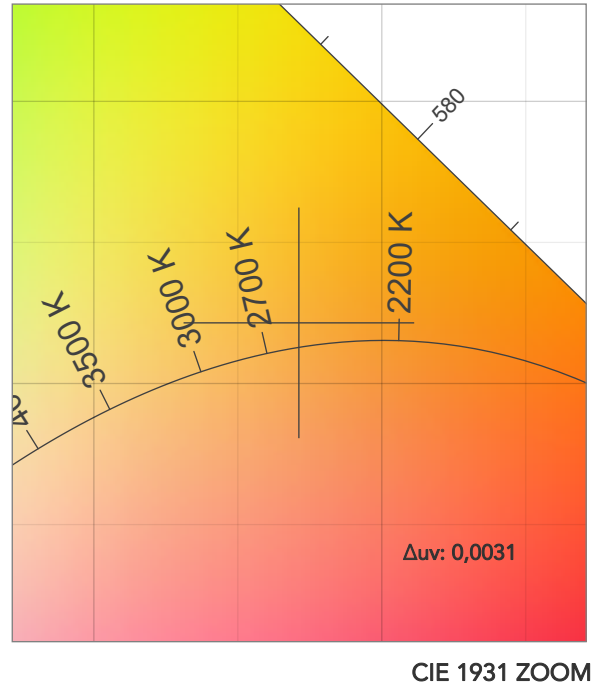
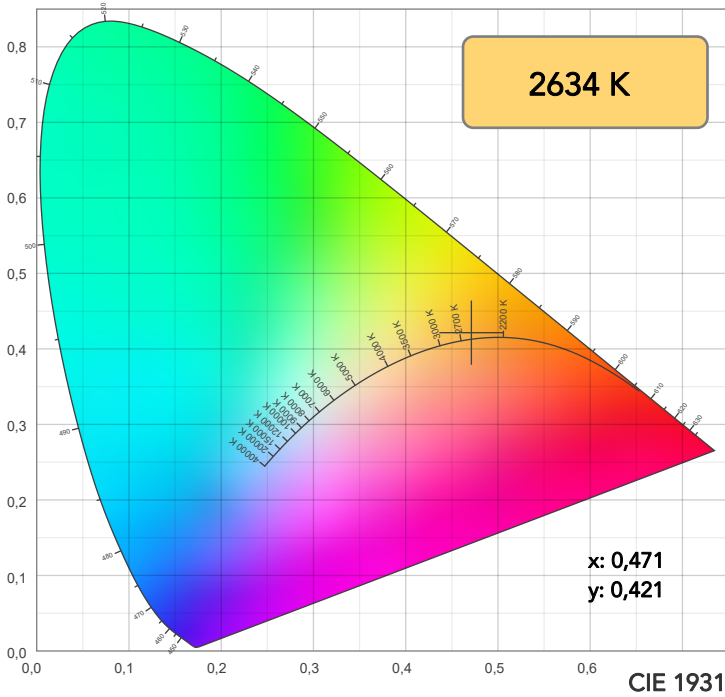


Beam angle 50%: 6,4°
Field angle 10%: 6,8°
Cut off angle 2.5%: 7,2°

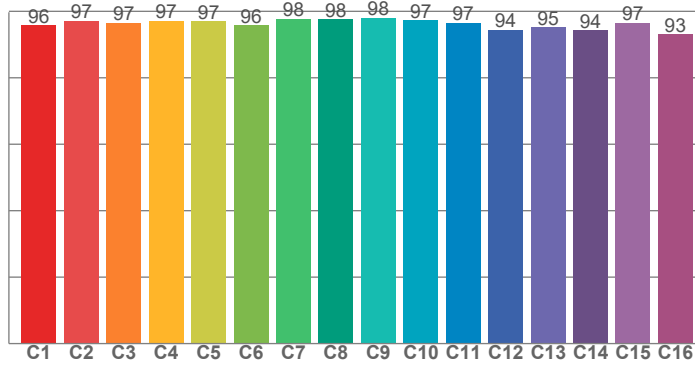
Spectra



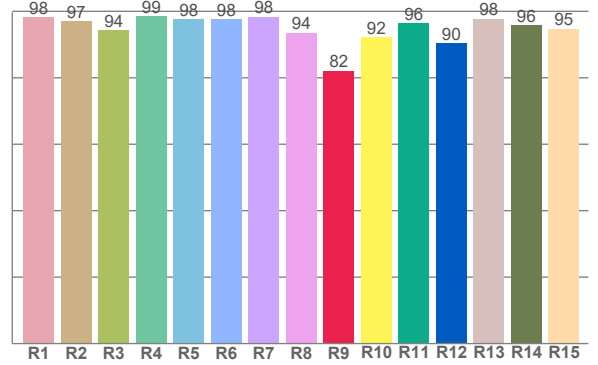
COLOR DETAILS



TM30: 96,3



CRI: 96,9 (R1-R8)



CRI R values, only R1-R8 are used to calculate final CRI value

R1	R2	R3	R4	R5	R6	R7	R8	R9	R10	R11	R12	R13	R14	R15
98,2	97,1	94,4	98,5	97,6	97,6	98,4	93,6	82,1	92,2	96,5	90,4	97,8	95,8	94,7

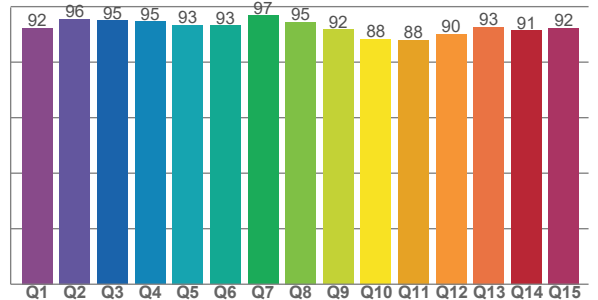
TM30 C values, 16 binned values out of total of 99 C values

C1	C2	C3	C4	C5	C6	C7	C8	C9	C10	C11	C12	C13	C14	C15	C16
95,8	97,2	96,6	97,1	97,0	95,8	97,7	97,6	98,1	97,3	96,6	94,5	95,2	94,3	96,5	93,0

CQS Q values

Q1	Q2	Q3	Q4	Q5	Q6	Q7	Q8	Q9	Q10	Q11	Q12	Q13	Q14	Q15
92,4	95,6	94,9	94,6	93,4	93,2	96,7	94,5	91,8	88,4	88,0	90,1	92,7	91,5	92,3

CQS: 92,1



COLOR PARAMETERS

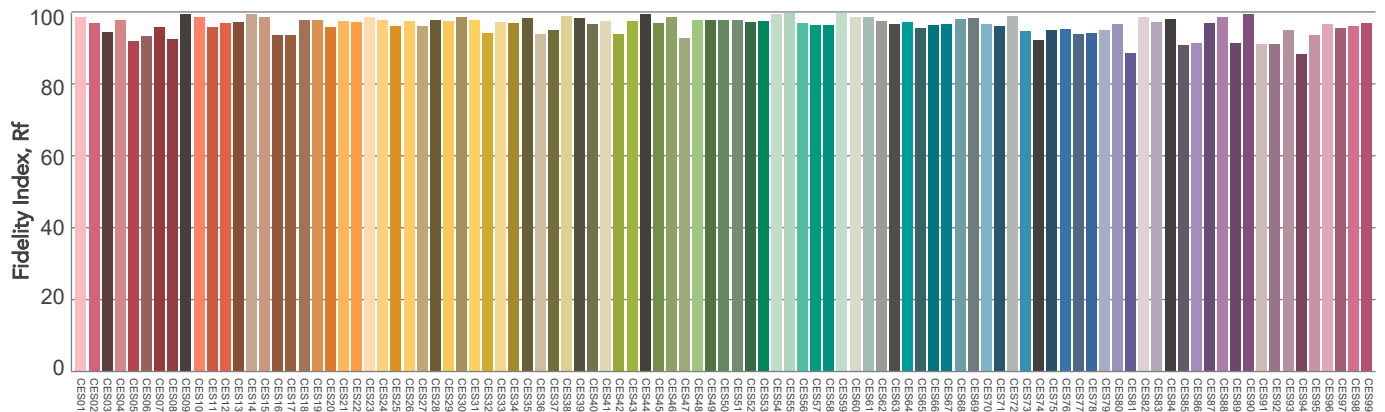
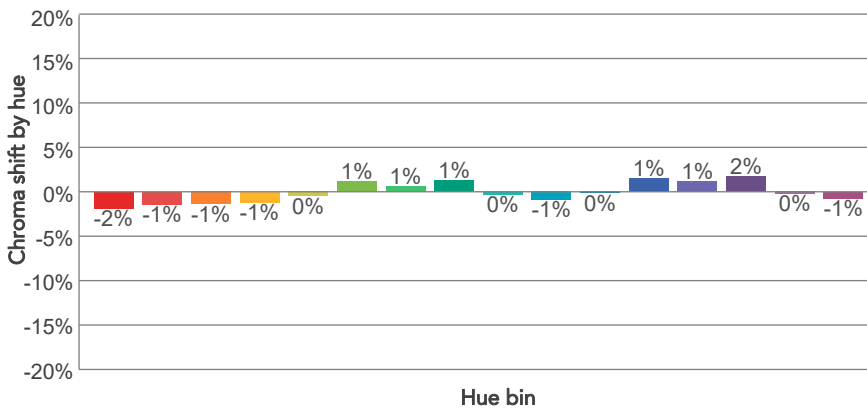
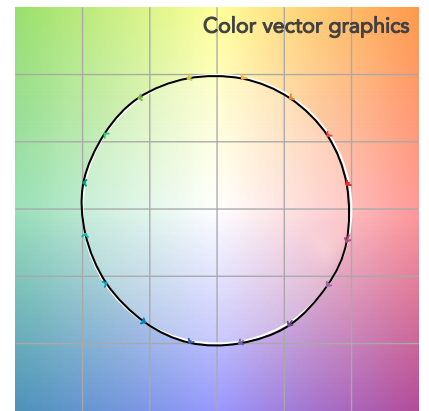
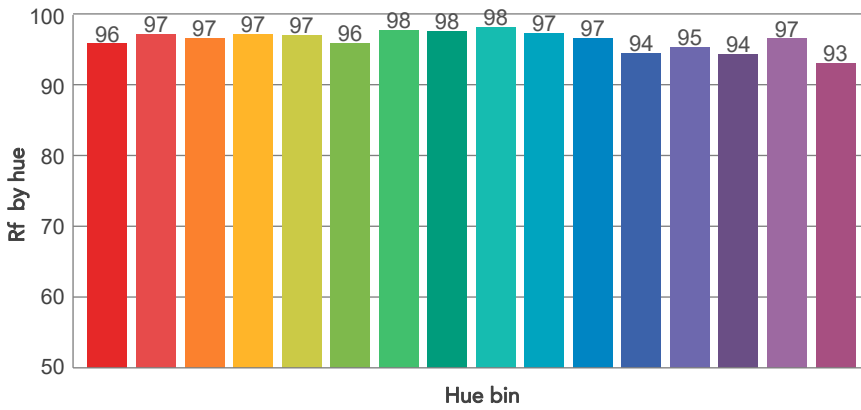
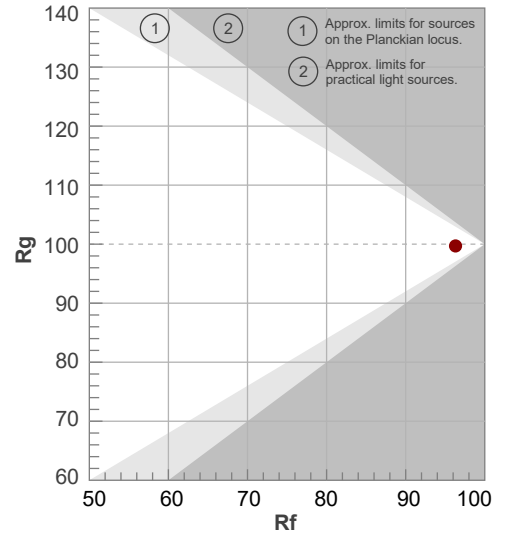
Color temperature	Color rendering index	Red component	Color fidelity	Color gamut	Color quality scale	Television lighting index	Color coordinate cie 1931	Color coordinate cie 1931	Color deviation from black body
CCT	CRI	CRI R9	TM30 Rf	TM30 Rg	CQS	TLCI	x	y	Δuv
2634 K	96,9	82,1	96,3	99,7	92,1	97	0,471	0,421	0,0031

TM30 DETAILS

Rf 96,3
Fidelity index Rf

Rg 99,7
Gammut index

Hue Bin	R _f	Graphic shifts (%)	
		Chroma	Hue
1	96	-2%	-1%
2	97	-1%	0%
3	97	-1%	1%
4	97	-1%	1%
5	97	0%	2%
6	96	1%	3%
7	98	1%	0%
8	98	1%	0%
9	98	0%	-1%
10	97	-1%	0%
11	97	0%	2%
12	94	1%	-1%
13	95	1%	-3%
14	94	2%	-4%
15	97	0%	-2%
16	93	-1%	-5%

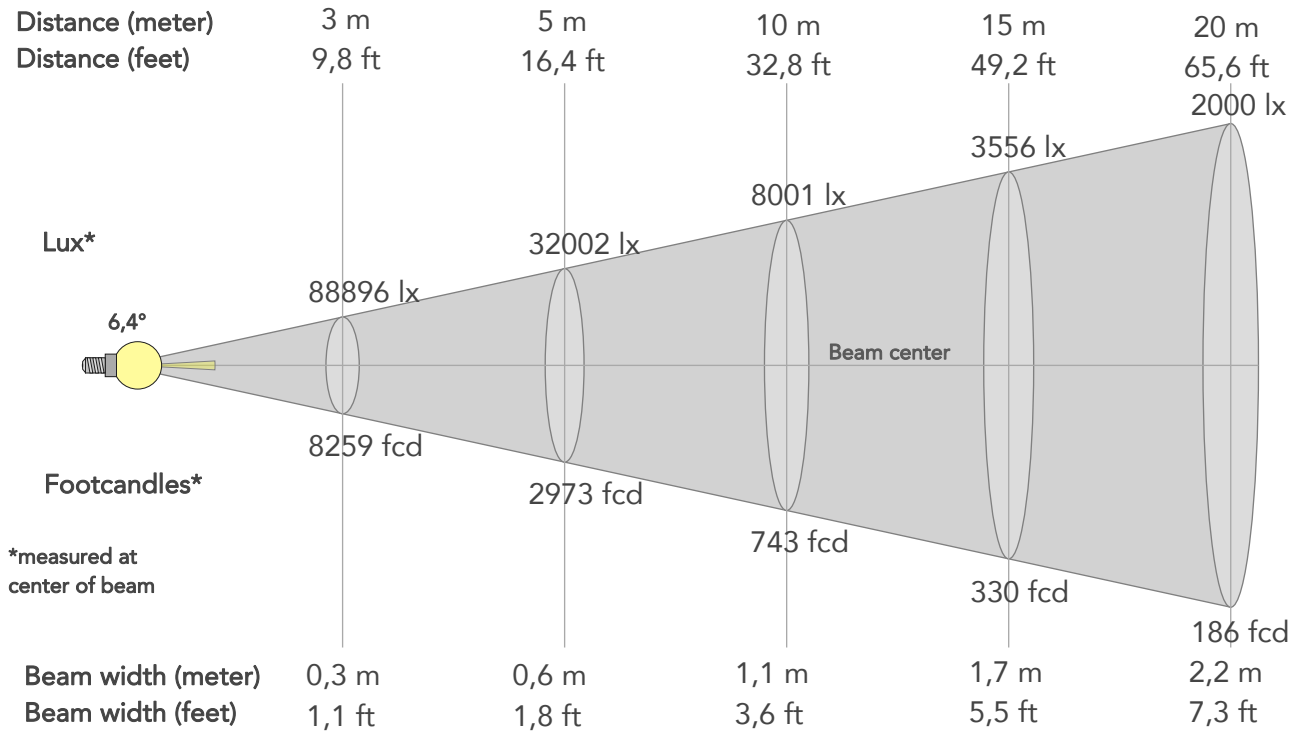


Color Evaluation Sample

BEAM DETAILS



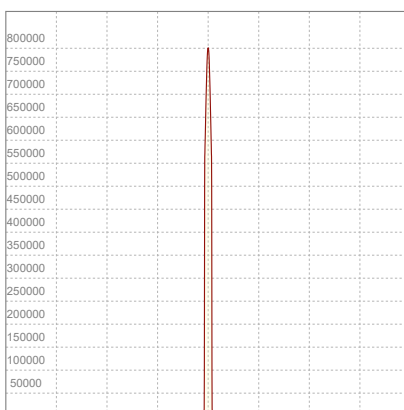
Beam angle 50%	Field angle 10%	Cut off angle 2,5%	Intensity ratio in 120° cone	Intensity ratio in 90° cone
6,4°	6,8°	7,2°	100,0%	100,0%



BEAM INTENSITIES AND WIDTHS

Distance	1m	2m	3m	4m	5m	7,5m	10m	15m	20m	25m	30m	40m	50m
Distance	3,3ft	6,6ft	9,8ft	13,1ft	16,4ft	24,6ft	32,8ft	49,2ft	65,6ft	82ft	98,4ft	131,2ft	164ft
Lux	800062lx	200016lx	88896lx	50004lx	32002lx	14223lx	8001lx	3556lx	2000lx	1280lx	889lx	500lx	320lx
Footcand.	74328fcd	18582fcd	8259fcd	4646fcd	2973fcd	1321fcd	743fcd	330fcd	186fcd	119fcd	83fcd	46fcd	30fcd
Beam wid.	0,1m	0,2m	0,3m	0,4m	0,6m	0,8m	1,1m	1,7m	2,2m	2,8m	3,3m	4,4m	5,6m
Beam wid.	0,4ft	0,7ft	1,1ft	1,5ft	1,8ft	2,7ft	3,6ft	5,5ft	7,3ft	9,1ft	10,9ft	14,6ft	18,2ft

LINEAR DISTRIBUTION DIAGRAM

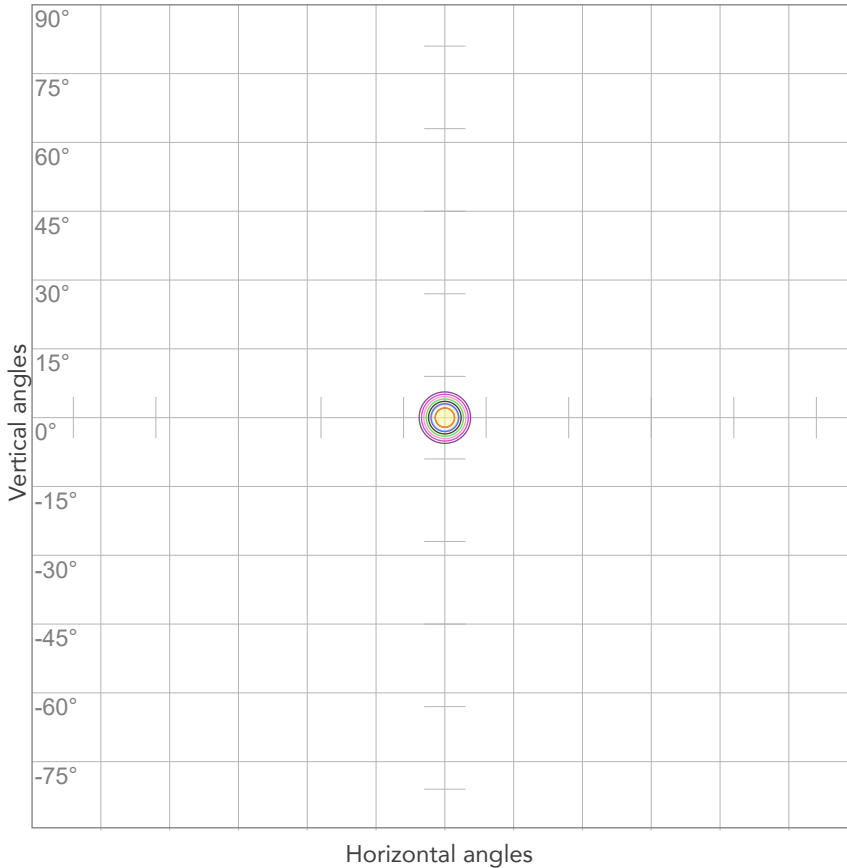


ELECTRICAL SPECIFICATIONS

Input voltage	Input current	Input power	Power FC	Efficiency
225V	1,75A	381W	0,97	17lm/W

ISO DIAGRAMS

ISO CANDELA DIAGRAM



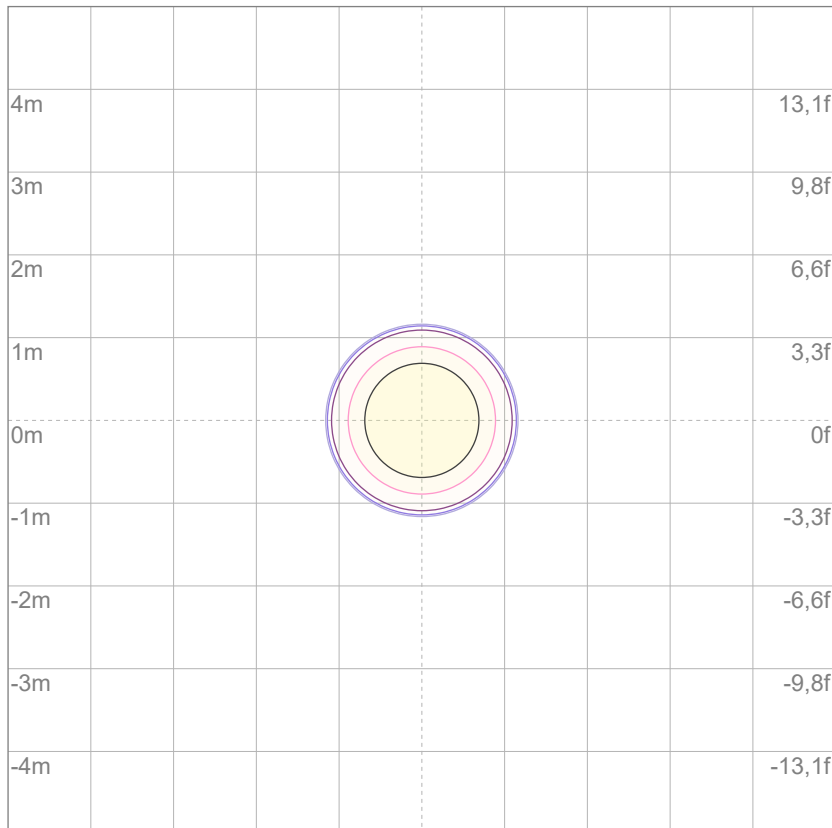
10%	80006 cd
20%	160012 cd
30%	240019 cd
40%	320025 cd
50%	400031 cd
60%	480037 cd
70%	560044 cd
80%	640050 cd

Conditions:

Number of c-planes: 2

Candela at center: 800062 cd

ISO LUX DIAGRAM



3%	240 lx
5%	400 lx
10%	800 lx
30%	2400 lx
50%	4000 lx

Conditions:

Number of c-planes: 2

Lux at center: 8001 lx

Lux distribution on a surface when lamp is mounted at 10 meters from the surface.

Mounting height: 10 meters (33 feet)



Total lumen output:

8601 lm

Peak candela output:

1047450 cd

Light quality:

CRI: 94,4

Color temperature:

6646 K

PRODUCT NAME:

ECLFWHPVW

MEASURAMENT CONDITIONS:

Beam angle:

PRL05

Target:

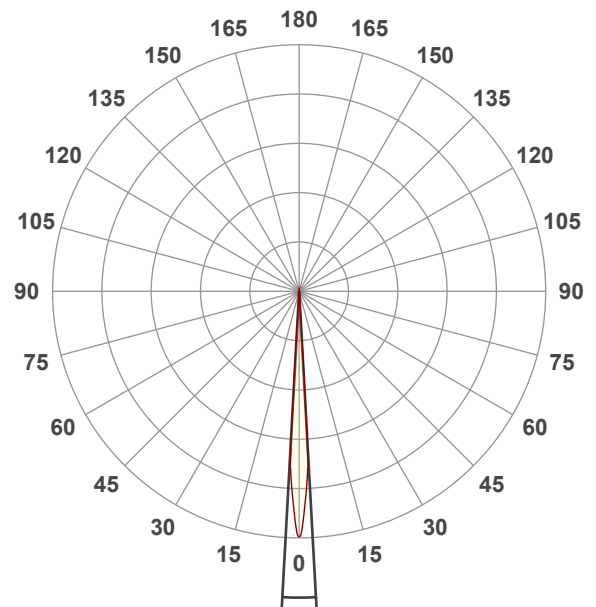
Cold White

Operator:

Giuseppe della Peruta

Date and time:

09/01/2026 10:18:57

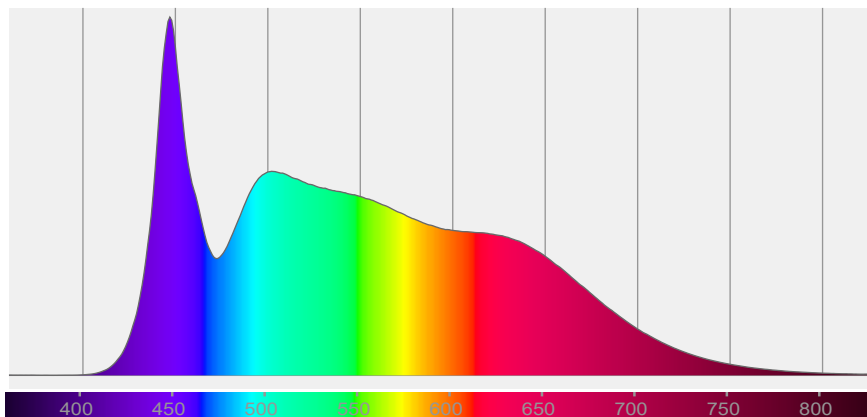


Beam angle 50%: 6,3°

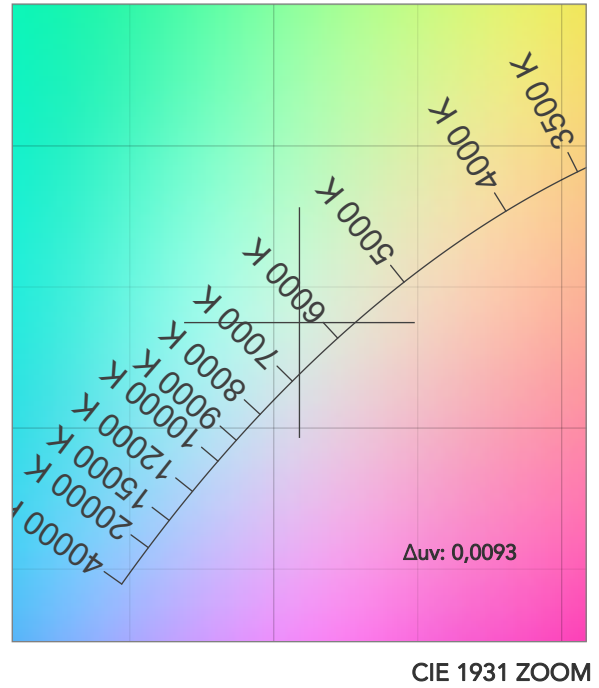
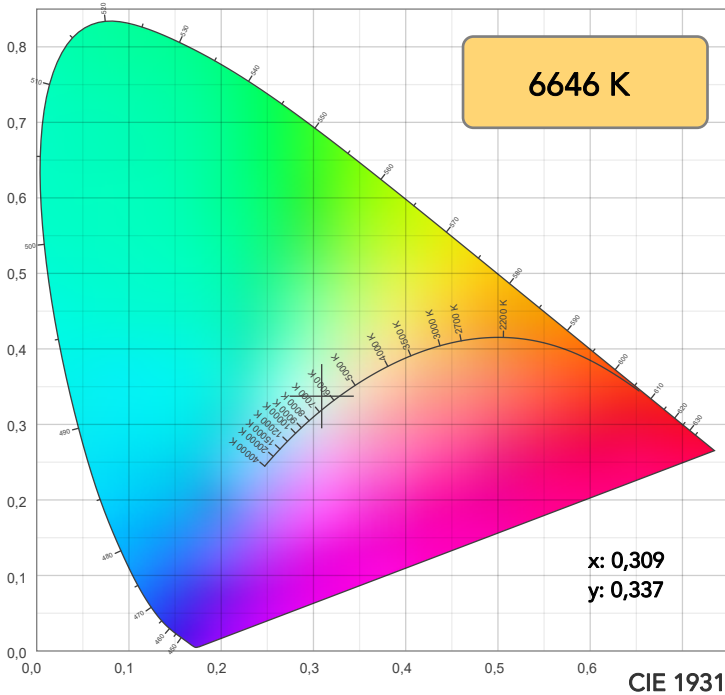
Field angle 10%: 6,9°

Cut off angle 2.5%: 7,3°

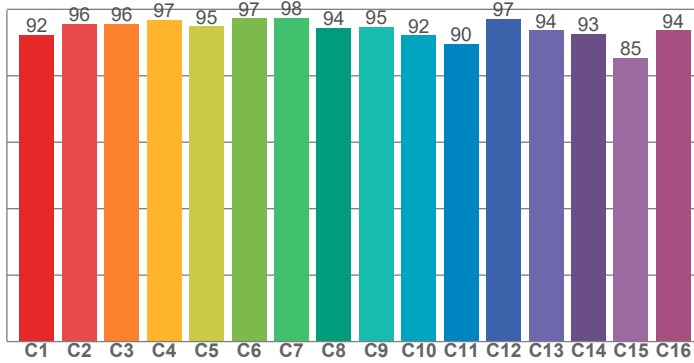
Spectra



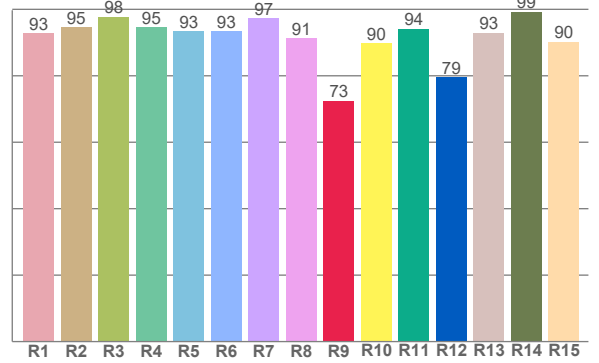
COLOR DETAILS



TM30: 94,0



CRI: 94,4 (R1-R8)



CRI R values, only R1-R8 are used to calculate final CRI value

R1	R2	R3	R4	R5	R6	R7	R8	R9	R10	R11	R12	R13	R14	R15
92,9	94,6	97,8	94,7	93,3	93,4	97,4	91,4	72,5	89,8	94,2	79,5	93,0	99,3	90,3

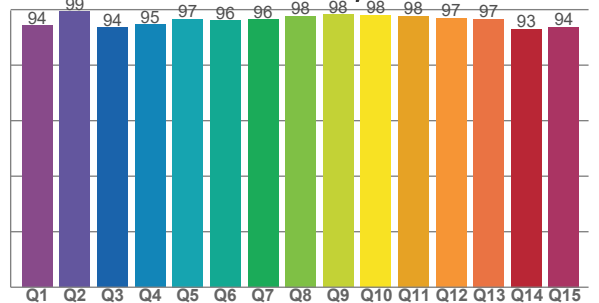
TM30 C values, 16 binned values out of total of 99 C values

C1	C2	C3	C4	C5	C6	C7	C8	C9	C10	C11	C12	C13	C14	C15	C16
92,3	95,7	95,6	96,9	94,8	97,3	97,5	94,4	94,7	92,2	89,6	97,2	93,7	92,6	85,5	93,8

CQS Q values

Q1	Q2	Q3	Q4	Q5	Q6	Q7	Q8	Q9	Q10	Q11	Q12	Q13	Q14	Q15
94,3	99,4	93,6	94,6	96,6	96,1	96,4	97,8	98,3	98,0	97,7	97,0	96,7	93,0	93,8

CQS: 95,8



COLOR PARAMETERS

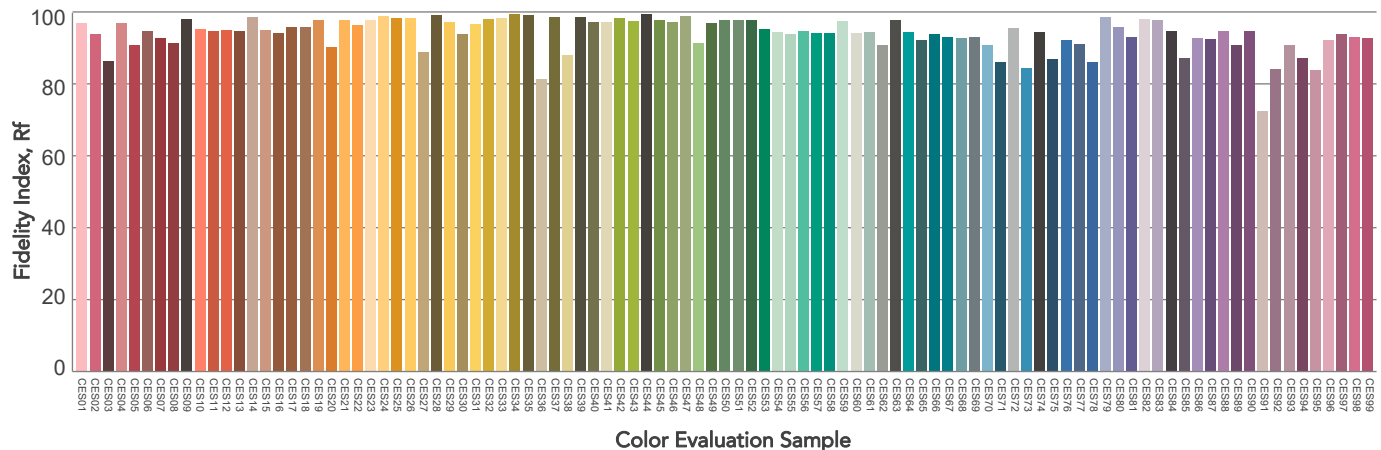
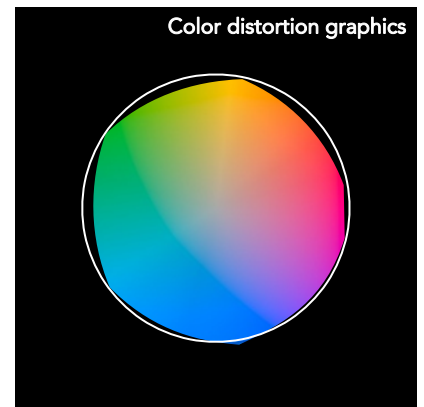
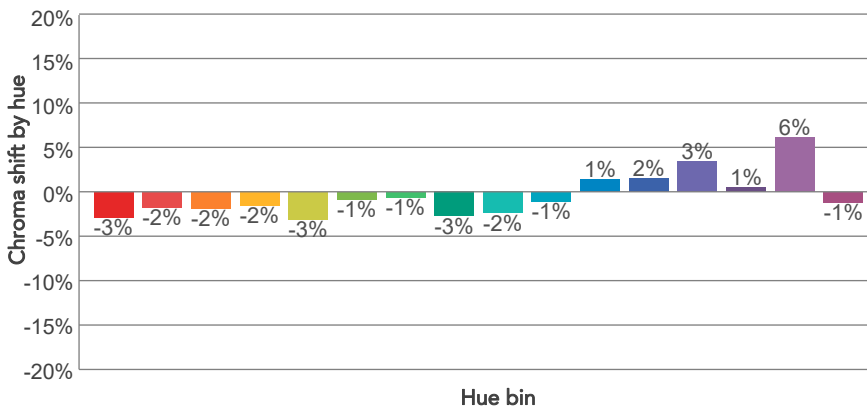
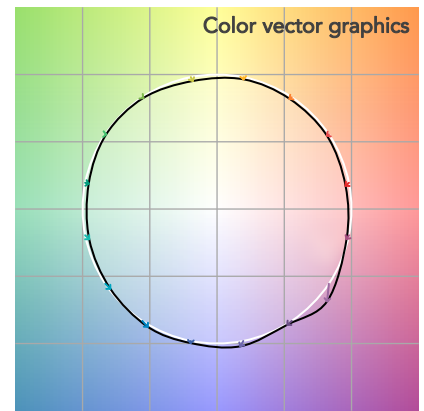
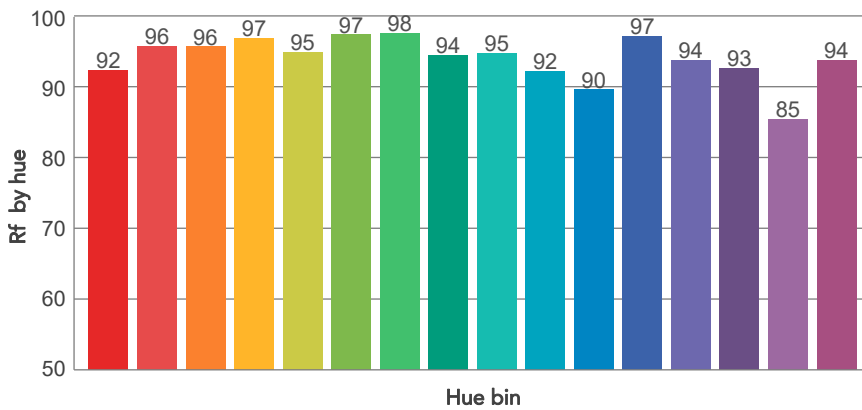
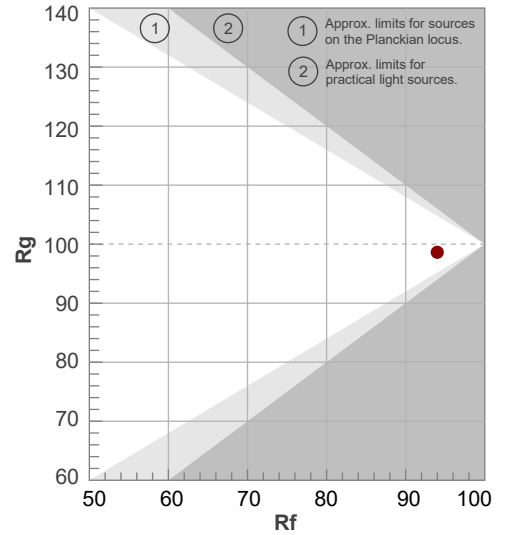
Color temperature	Color rendering index	Red component	Color fidelity	Color gamut	Color quality scale	Television lighting index	Color coordinate cie 1931	Color coordinate cie 1931	Color deviation from black body
CCT	CRI	CRI R9	TM30 Rf	TM30 Rg	CQS	TLCI	x	y	Δuv
6646 K	94,4	72,5	94,0	98,6	95,8	99	0,309	0,337	0,0093

TM30 DETAILS

Rf 94,0
Fidelity index Rf

Rg 98,6
Gammut index

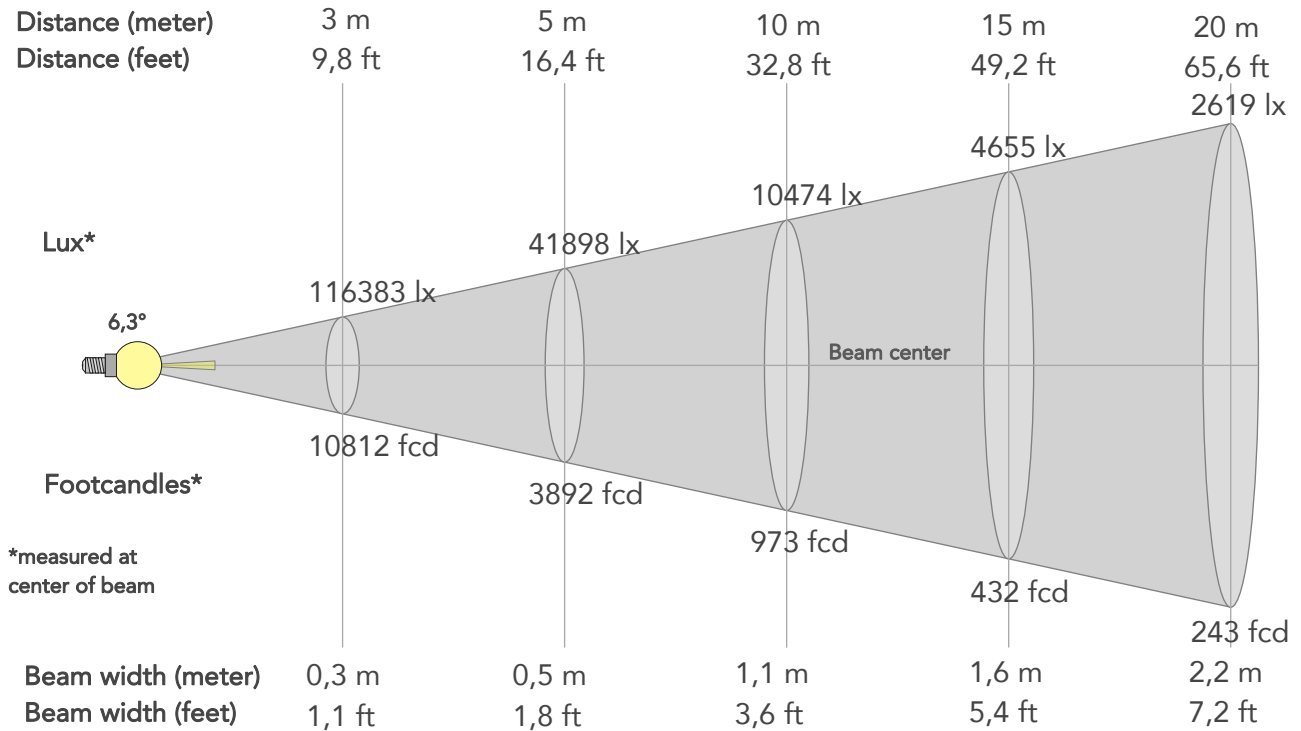
Hue Bin	R _f	Graphic shifts (%)	
		Chroma	Hue
1	92	-3%	-2%
2	96	-2%	0%
3	96	-2%	1%
4	97	-2%	-1%
5	95	-3%	-1%
6	97	-1%	0%
7	98	-1%	0%
8	94	-3%	0%
9	95	-2%	3%
10	92	-1%	5%
11	90	1%	6%
12	97	2%	0%
13	94	3%	-3%
14	93	1%	-4%
15	85	6%	-12%
16	94	-1%	-3%



BEAM DETAILS



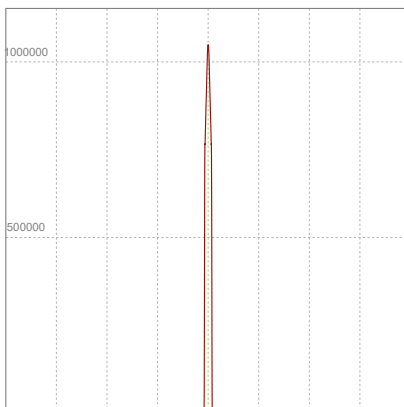
Beam angle 50%	Field angle 10%	Cut off angle 2,5%	Intensity ratio in 120° cone	Intensity ratio in 90° cone
6,3°	6,9°	7,3°	100,0%	100,0%



BEAM INTENSITIES AND WIDTHS

Distance	1m	2m	3m	4m	5m	7,5m	10m	15m	20m	25m	30m	40m	50m
Distance	3,3ft	6,6ft	9,8ft	13,1ft	16,4ft	24,6ft	32,8ft	49,2ft	65,6ft	82ft	98,4ft	131,2ft	164ft
Lux	1047450lx	261862lx	116383lx	65466lx	41898lx	18621lx	10474lx	4655lx	2619lx	1676lx	1164lx	655lx	419lx
Footcand.	97311fcd	24328fcd	10812fcd	6082fcd	3892fcd	1730fcd	973fcd	432fcd	243fcd	156fcd	108fcd	61fcd	39fcd
Beam wid.	0,1m	0,2m	0,3m	0,4m	0,5m	0,8m	1,1m	1,6m	2,2m	2,7m	3,3m	4,4m	5,5m
Beam wid.	0,4ft	0,7ft	1,1ft	1,4ft	1,8ft	2,7ft	3,6ft	5,4ft	7,2ft	9ft	10,8ft	14,4ft	18ft

LINEAR DISTRIBUTION DIAGRAM

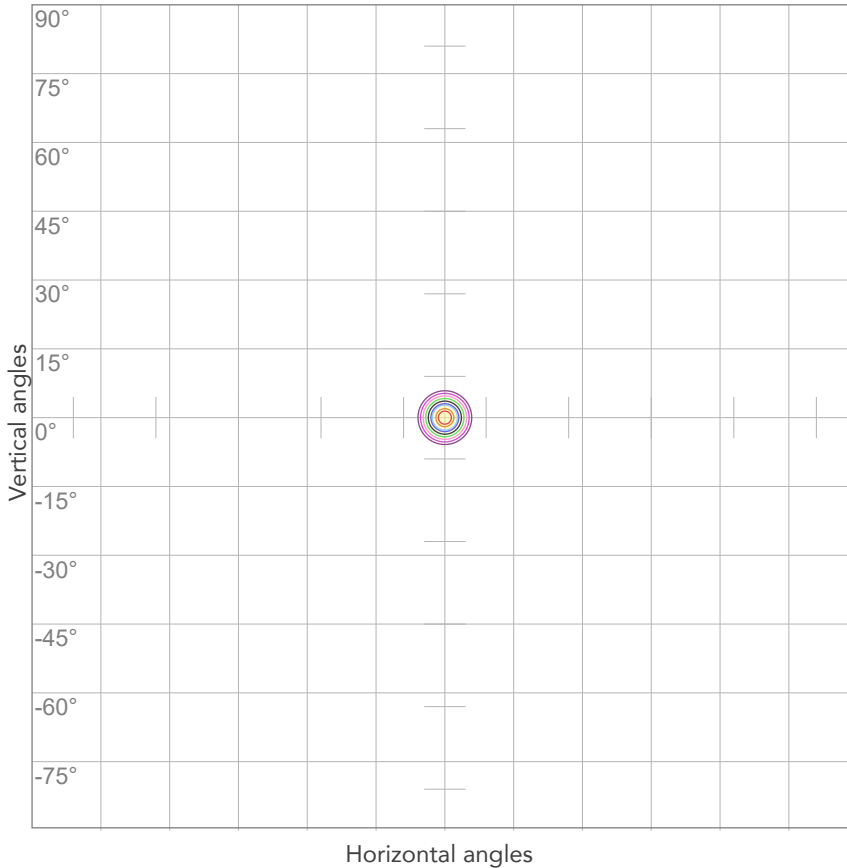


ELECTRICAL SPECIFICATIONS

Input voltage	Input current	Input power	Power FC	Efficiency
228V	1,73A	379,1W	0,96	23lm/W

ISO DIAGRAMS

ISO CANDELA DIAGRAM



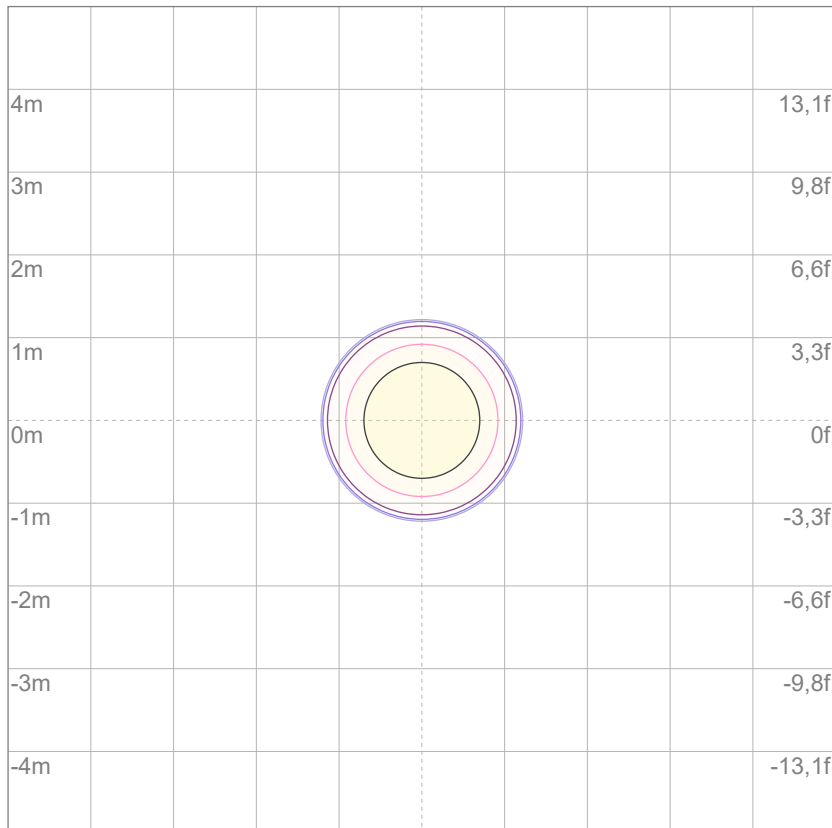
10%	104745 cd
20%	209490 cd
30%	314235 cd
40%	418980 cd
50%	523725 cd
60%	628470 cd
70%	733215 cd
80%	837960 cd

Conditions:

Number of c-planes: 2

Candela at center: 1047450 cd

ISO LUX DIAGRAM



3%	314 lx
5%	524 lx
10%	1047 lx
30%	3142 lx
50%	5237 lx

Conditions:

Number of c-planes: 2

Lux at center: 10,5K lx

Lux distribution on a surface when lamp is mounted at 10 meters from the surface.

Mounting height: 10 meters (33 feet)



Total lumen output:

7236 lm

Peak candela output:

870061 cd

Light quality:

CRI: 97,7

Color temperature:

2807 K

PRODUCT NAME:

ECLFWHPVW

MEASURAMENT CONDITIONS:

Beam angle:

PRL05

Target:

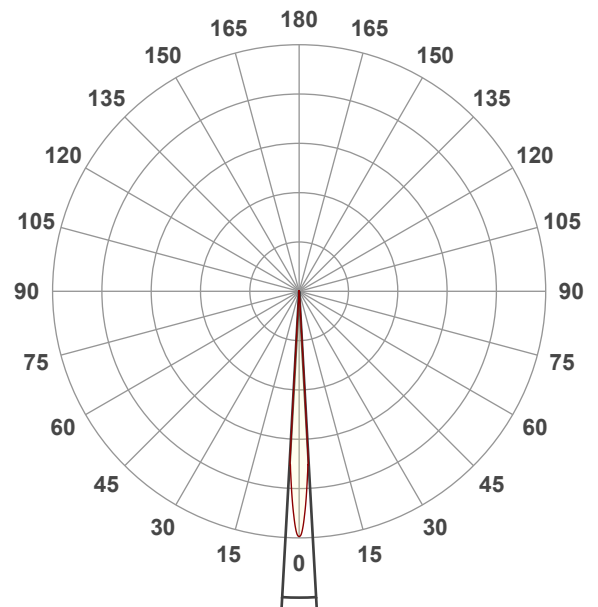
2800K

Operator:

Giuseppe della Peruta

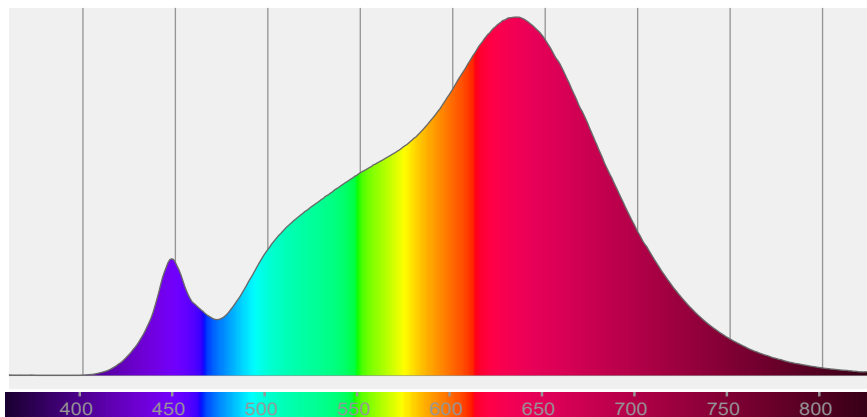
Date and time:

09/01/2026 10:28:27

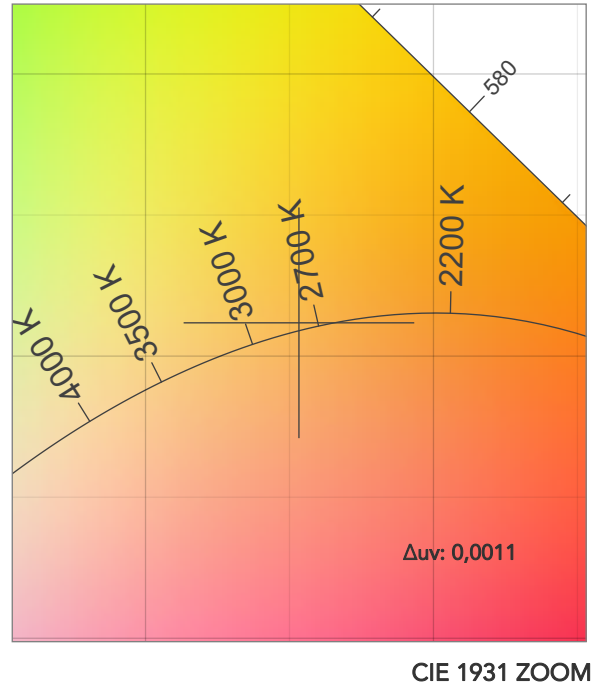
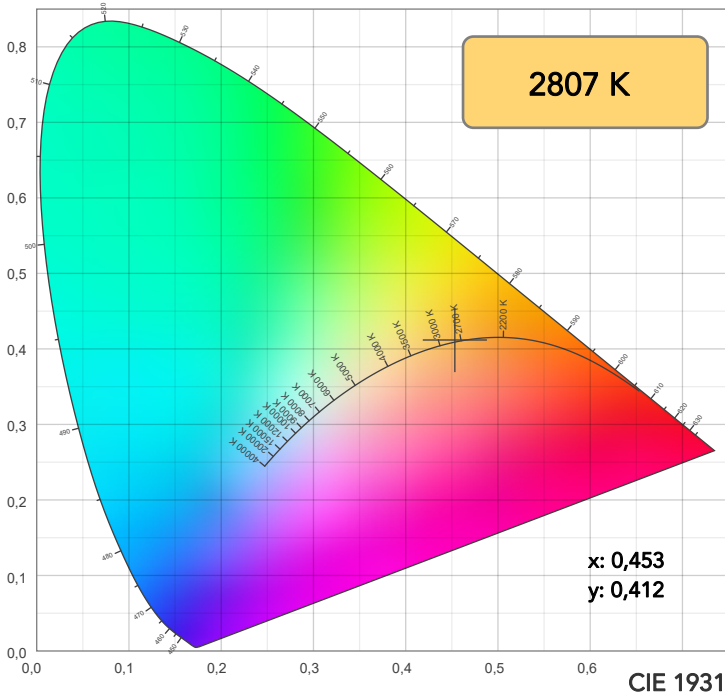


Beam angle 50%: 6,3°
Field angle 10%: 6,9°
Cut off angle 2.5%: 7,2°

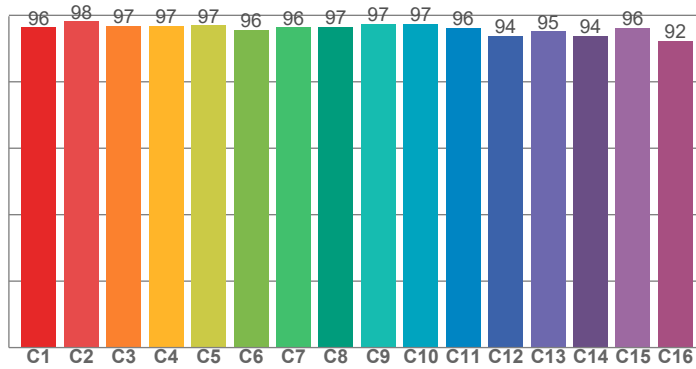
Spectra



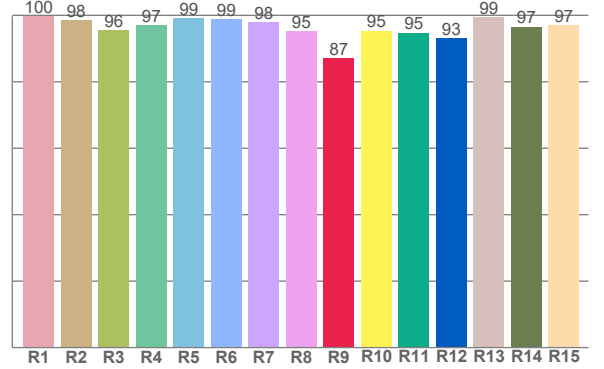
COLOR DETAILS



TM30: 96,2



CRI: 97,7 (R1-R8)



CRI R values, only R1-R8 are used to calculate final CRI value

R1	R2	R3	R4	R5	R6	R7	R8	R9	R10	R11	R12	R13	R14	R15
99,7	98,4	95,6	97,1	99,0	98,7	97,9	95,3	87,1	95,4	94,8	93,2	99,4	96,6	97,0

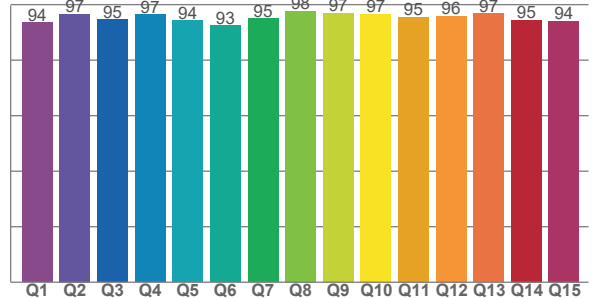
TM30 C values, 16 binned values out of total of 99 C values

C1	C2	C3	C4	C5	C6	C7	C8	C9	C10	C11	C12	C13	C14	C15	C16
96,4	98,1	96,9	96,9	97,0	95,6	96,5	96,5	97,5	97,4	96,2	93,9	95,2	93,8	96,2	92,3

CQS Q values

Q1	Q2	Q3	Q4	Q5	Q6	Q7	Q8	Q9	Q10	Q11	Q12	Q13	Q14	Q15
93,6	96,6	94,6	96,5	94,3	92,5	95,0	97,7	97,1	96,6	95,5	95,9	96,8	94,5	94,2

CQS: 95,1



COLOR PARAMETERS

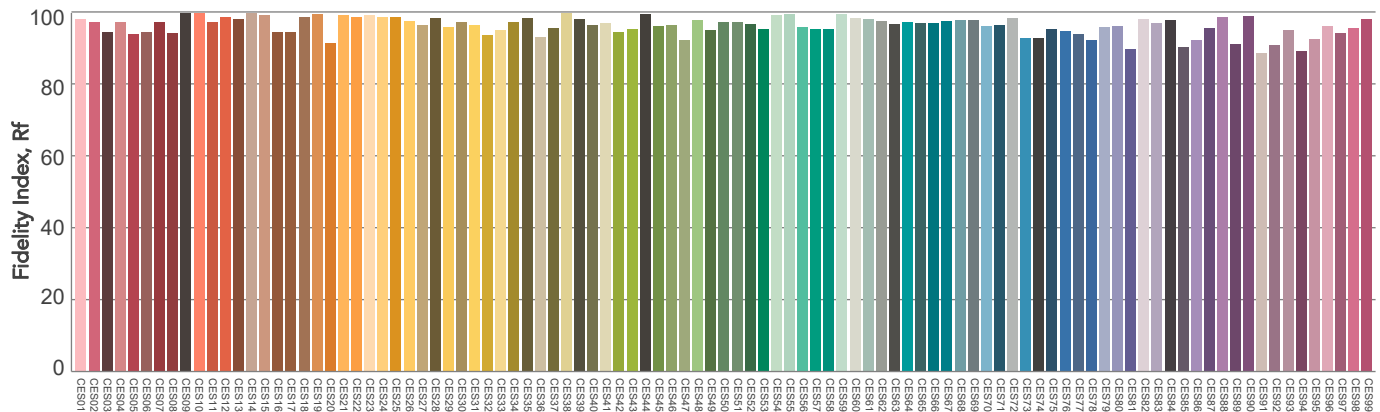
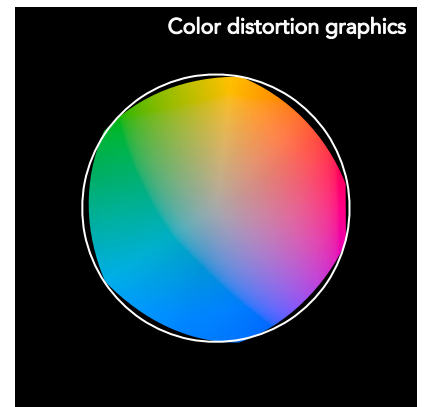
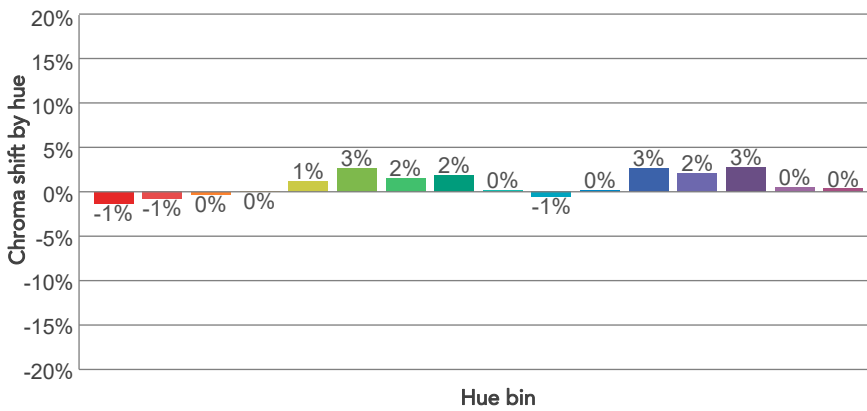
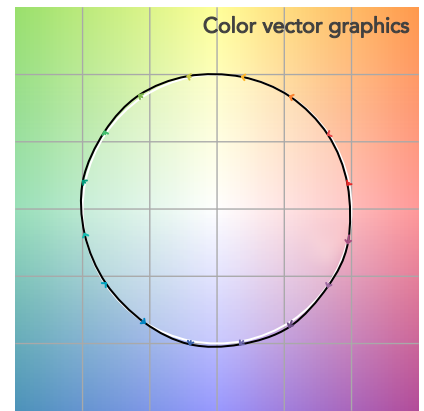
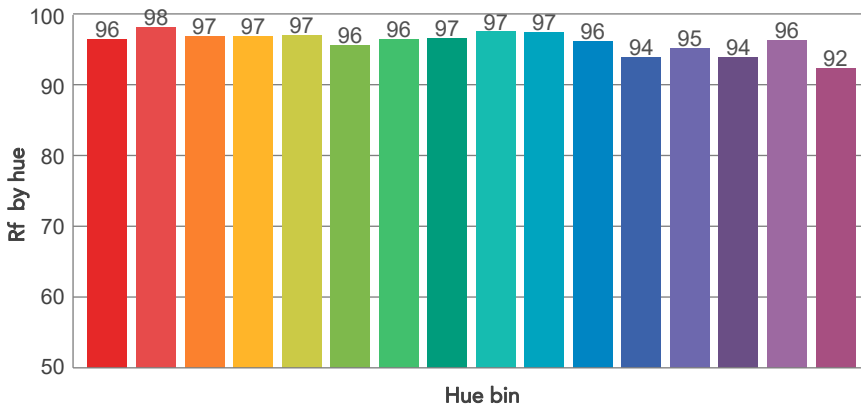
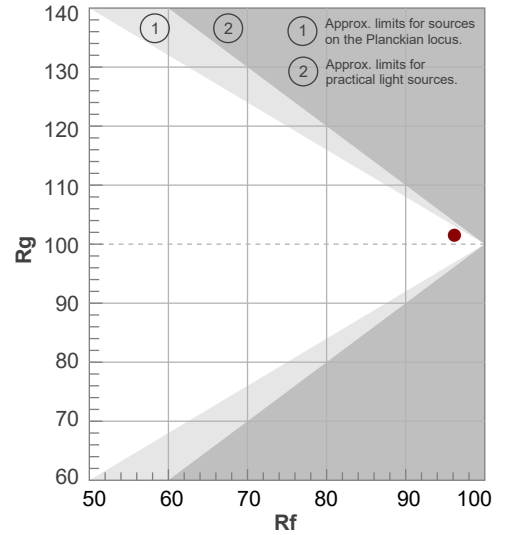
Color temperature	Color rendering index	Red component	Color fidelity	Color gamut	Color quality scale	Television lighting index	Color coordinate cie 1931	Color coordinate cie 1931	Color deviation from black body
CCT	CRI	CRI R9	TM30 Rf	TM30 Rg	CQS	TLCI	x	y	Δuv
2807 K	97,7	87,1	96,2	101,5	95,1	97	0,453	0,412	0,0011

TM30 DETAILS

Rf 96,2
Fidelity index Rf

Rg 101,5
Gammut index

Hue Bin	R _f	Graphic shifts (%)	
		Chroma	Hue
1	96	-1%	-1%
2	98	-1%	0%
3	97	0%	1%
4	97	0%	1%
5	97	1%	2%
6	96	3%	1%
7	96	2%	-1%
8	97	2%	-1%
9	97	0%	-1%
10	97	-1%	0%
11	96	0%	2%
12	94	3%	0%
13	95	2%	-3%
14	94	3%	-4%
15	96	0%	-2%
16	92	0%	-6%

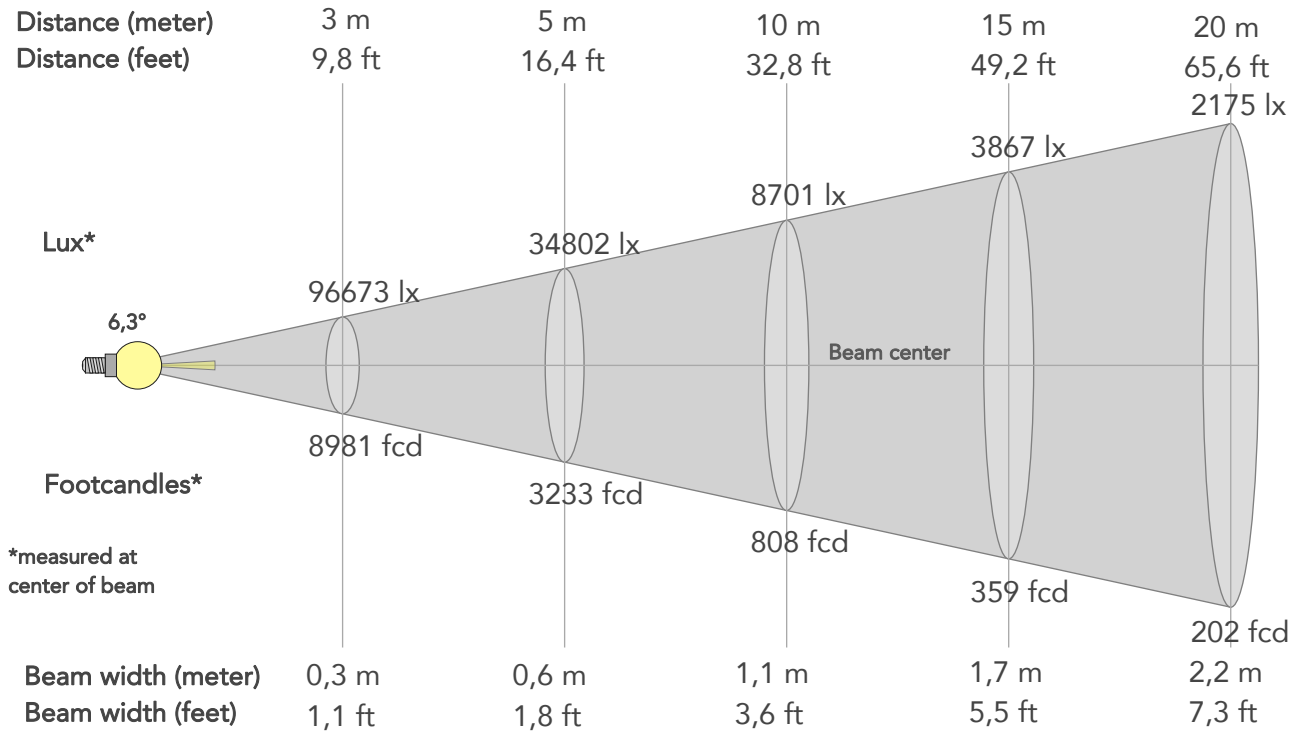


Color Evaluation Sample

BEAM DETAILS



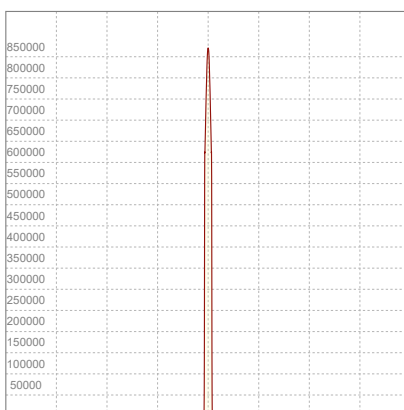
Beam angle 50%	Field angle 10%	Cut off angle 2,5%	Intensity ratio in 120° cone	Intensity ratio in 90° cone
6,3°	6,9°	7,2°	100,0%	100,0%



BEAM INTENSITIES AND WIDTHS

Distance	1m	2m	3m	4m	5m	7,5m	10m	15m	20m	25m	30m	40m	50m
Distance	3,3ft	6,6ft	9,8ft	13,1ft	16,4ft	24,6ft	32,8ft	49,2ft	65,6ft	82ft	98,4ft	131,2ft	164ft
Lux	870061lx	217515lx	96673lx	54379lx	34802lx	15468lx	8701lx	3867lx	2175lx	1392lx	967lx	544lx	348lx
Footcand.	80831fcd	20208fcd	8981fcd	5052fcd	3233fcd	1437fcd	808fcd	359fcd	202fcd	129fcd	90fcd	51fcd	32fcd
Beam wid.	0,1m	0,2m	0,3m	0,4m	0,6m	0,8m	1,1m	1,7m	2,2m	2,8m	3,3m	4,4m	5,5m
Beam wid.	0,4ft	0,7ft	1,1ft	1,5ft	1,8ft	2,7ft	3,6ft	5,5ft	7,3ft	9,1ft	10,9ft	14,6ft	18,2ft

LINEAR DISTRIBUTION DIAGRAM

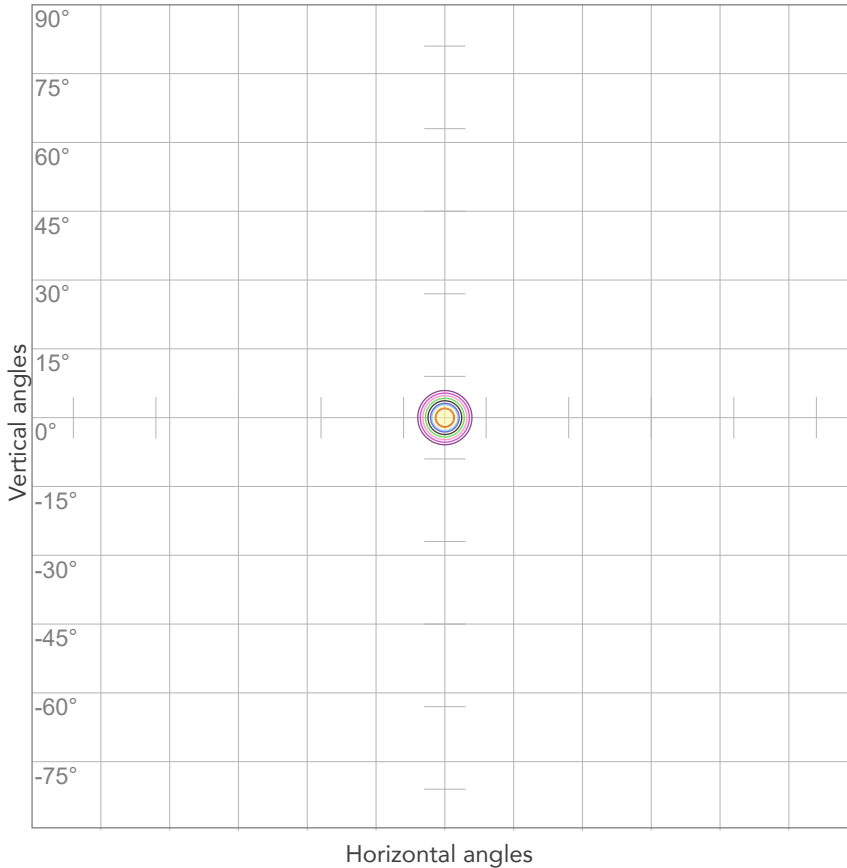


ELECTRICAL SPECIFICATIONS

Input voltage	Input current	Input power	Power FC	Efficiency
227V	1,87A	411,1W	0,96	18lm/W

ISO DIAGRAMS

ISO CANDELA DIAGRAM



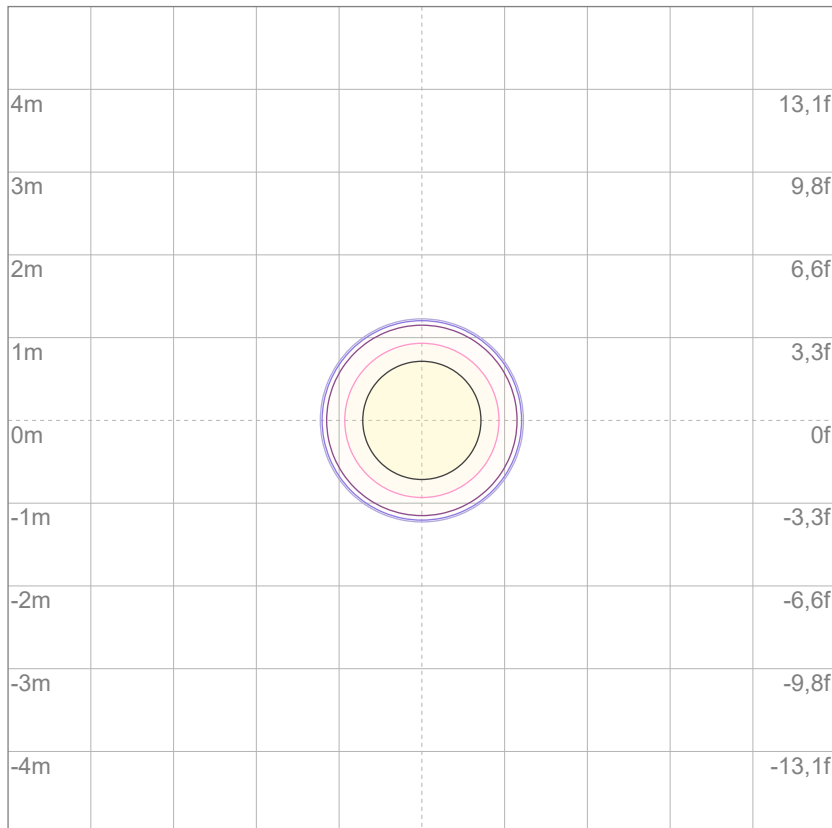
10%	87006 cd
20%	174012 cd
30%	261018 cd
40%	348024 cd
50%	435030 cd
60%	522036 cd
70%	609043 cd
80%	696049 cd

Conditions:

Number of c-planes: 2

Candela at center: 870061 cd

ISO LUX DIAGRAM



3%	261 lx
5%	435 lx
10%	870 lx
30%	2610 lx
50%	4350 lx

Conditions:

Number of c-planes: 2

Lux at center: 8701 lx

Lux distribution on a surface when lamp is mounted at 10 meters from the surface.

Mounting height: 10 meters (33 feet)



Total lumen output:

8070 lm

Peak candela output:

969382 cd

Light quality:

CRI: 97,7

Color temperature:

3227 K

PRODUCT NAME:

ECLFWHPVW

MEASUREMENT CONDITIONS:

Beam angle:

PRL05

Target:

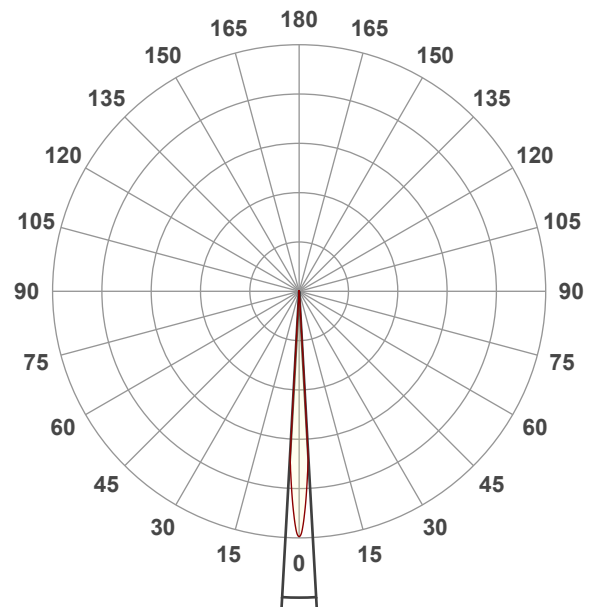
3200K

Operator:

Giuseppe della Peruta

Date and time:

09/01/2026 10:38:05

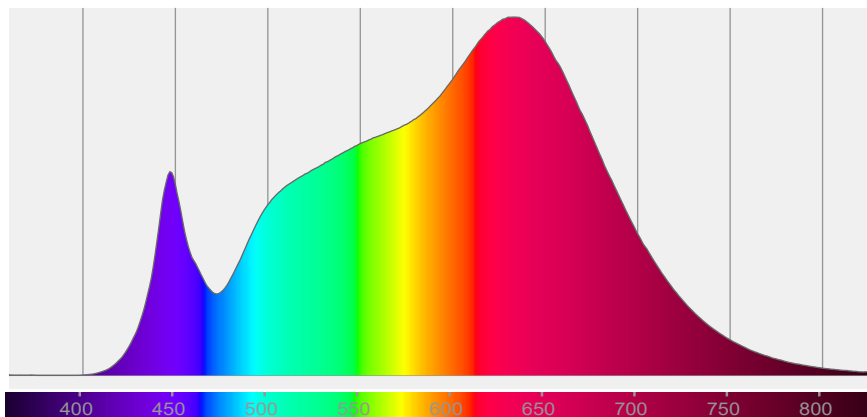


Beam angle 50%: 6,4°

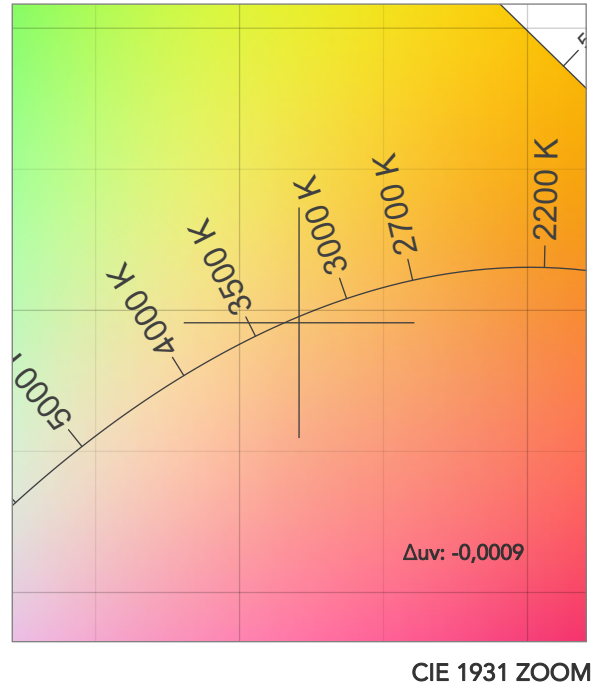
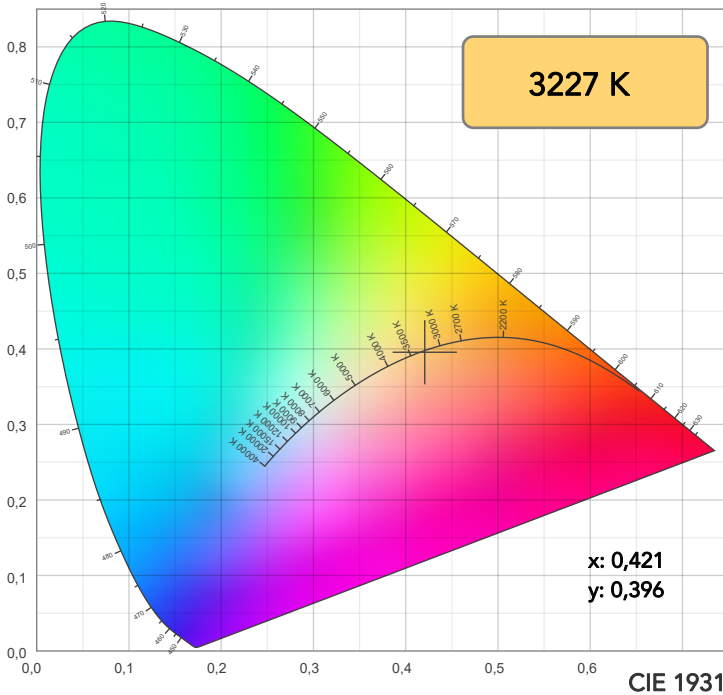
Field angle 10%: 7°

Cut off angle 2.5%: 7,2°

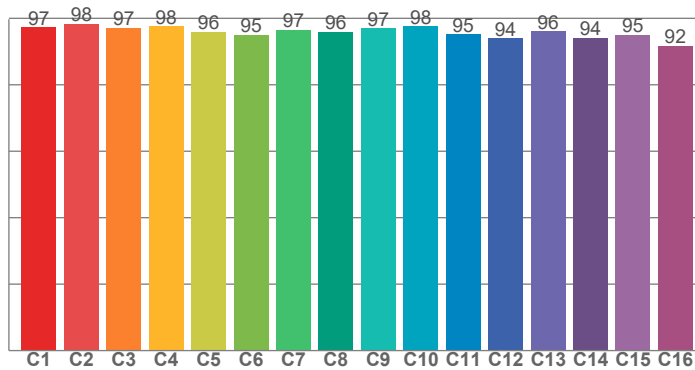
Spectra



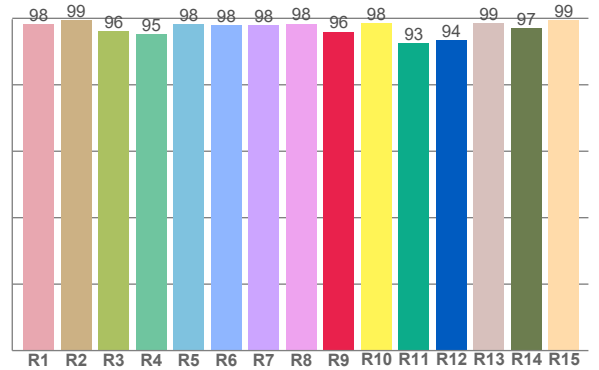
COLOR DETAILS



TM30: 96,1



CRI: 97,7 (R1-R8)



CRI R values, only R1-R8 are used to calculate final CRI value

R1	R2	R3	R4	R5	R6	R7	R8	R9	R10	R11	R12	R13	R14	R15
98,2	99,5	96,2	95,3	98,1	98,0	97,9	98,4	96,0	98,5	92,6	93,5	98,6	97,1	99,5

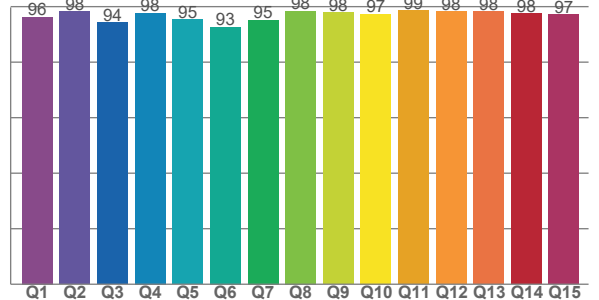
TM30 C values, 16 binned values out of total of 99 C values

C1	C2	C3	C4	C5	C6	C7	C8	C9	C10	C11	C12	C13	C14	C15	C16
97,2	98,4	97,2	97,5	96,0	95,0	96,5	95,9	97,0	97,6	95,2	93,9	96,0	94,1	95,1	91,7

CQS Q values

Q1	Q2	Q3	Q4	Q5	Q6	Q7	Q8	Q9	Q10	Q11	Q12	Q13	Q14	Q15
96,3	98,3	94,2	97,7	95,3	92,7	95,2	98,4	97,8	97,3	98,6	98,2	98,3	97,5	97,2

CQS: 96,2



COLOR PARAMETERS

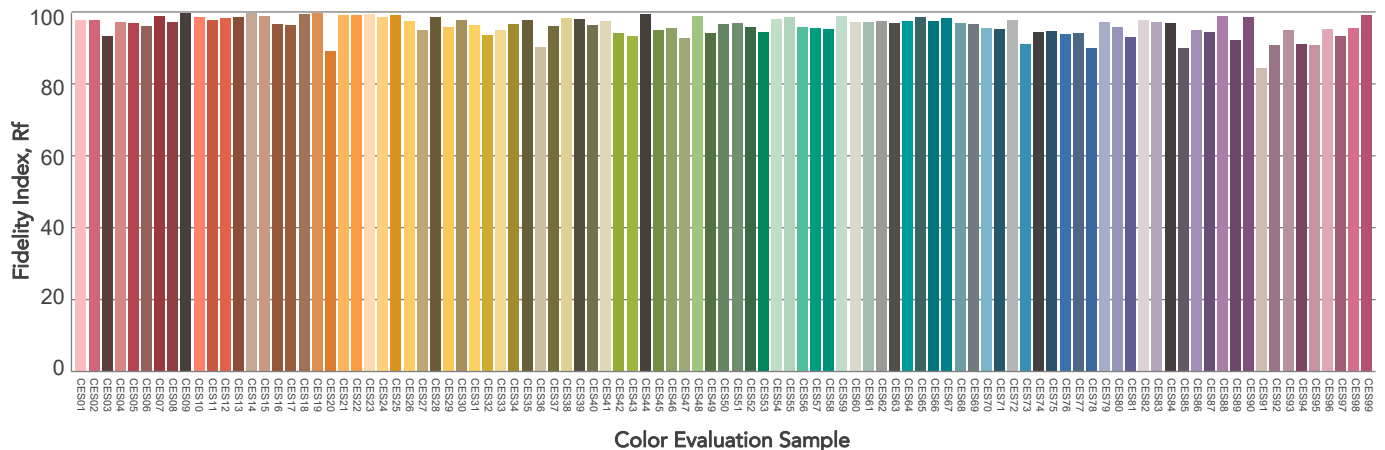
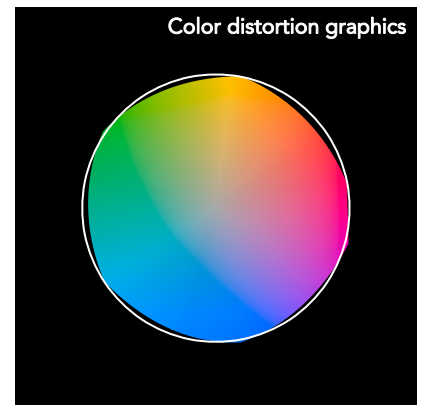
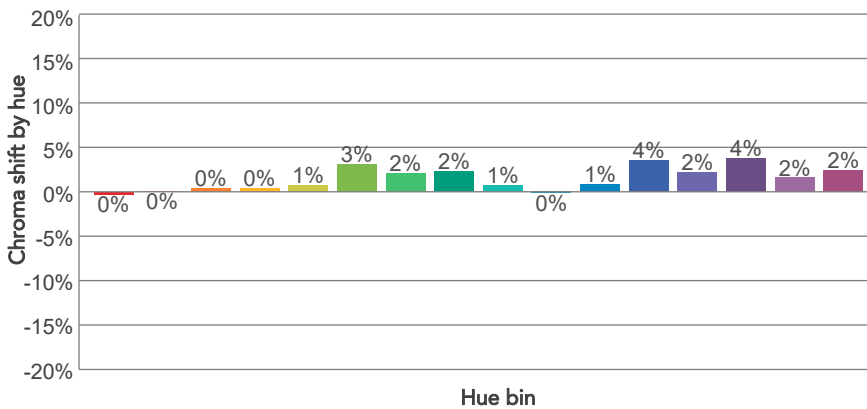
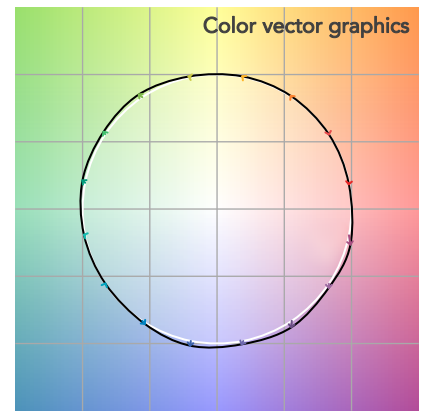
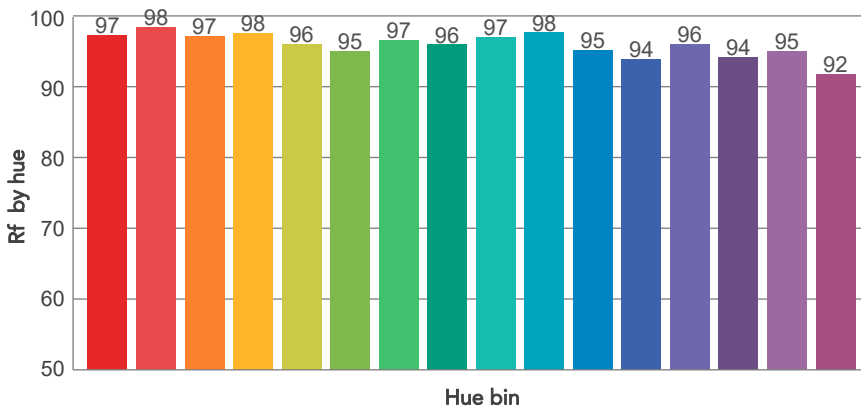
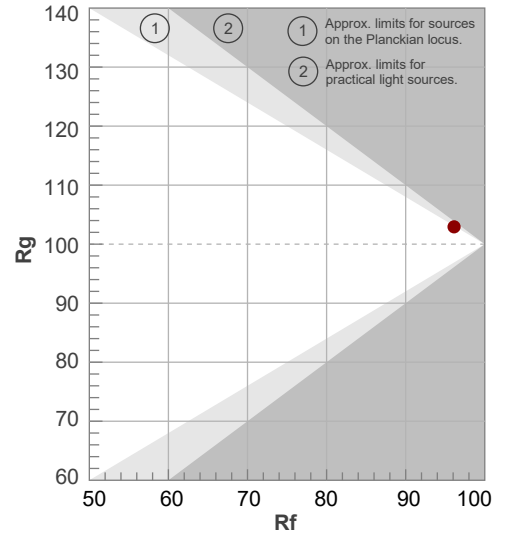
Color temperature	Color rendering index	Red component	Color fidelity	Color gamut	Color quality scale	Television lighting index	Color coordinate cie 1931	Color coordinate cie 1931	Color deviation from black body
CCT	CRI	CRI R9	TM30 Rf	TM30 Rg	CQS	TLCI	x	y	Δuv
3227 K	97,7	96,0	96,1	102,9	96,2	98	0,421	0,396	-0,0009

TM30 DETAILS

Rf 96,1
Fidelity index Rf

Rg 102,9
Gammut index

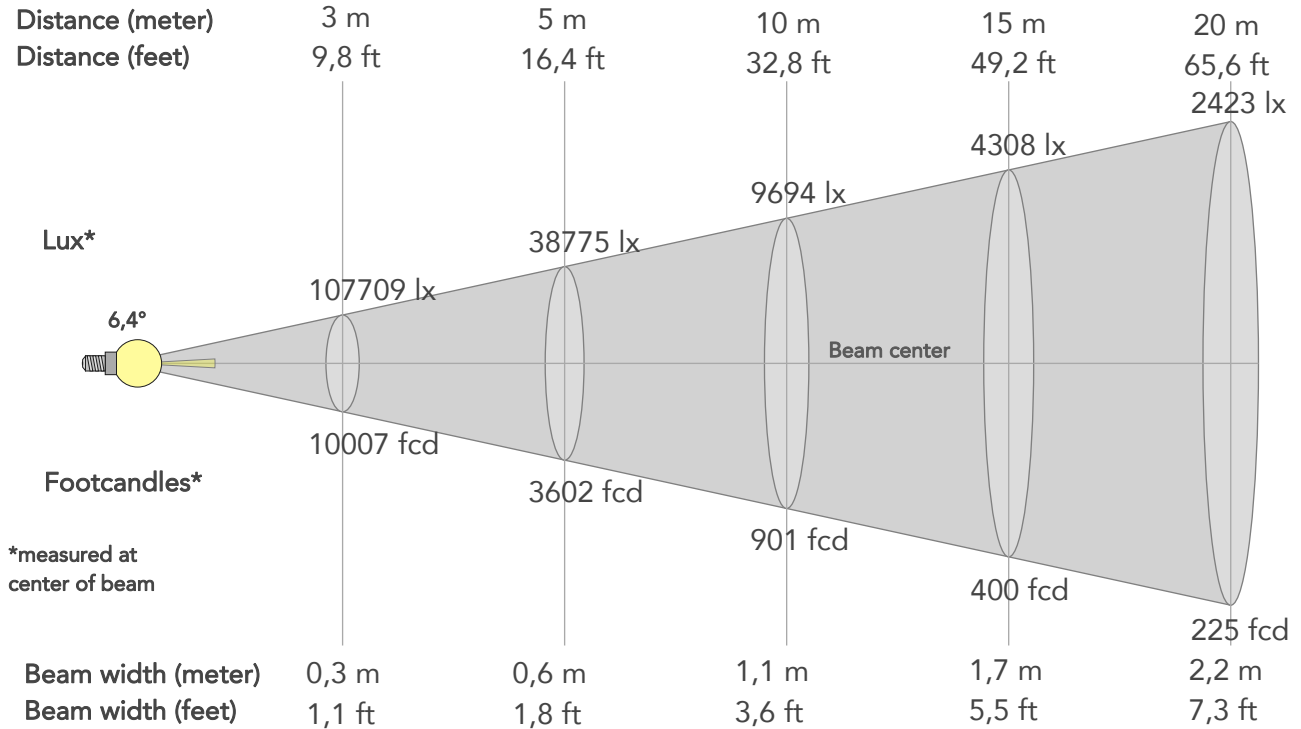
Hue Bin	R _f	Graphic shifts (%)	
		Chroma	Hue
1	97	0%	-1%
2	98	0%	0%
3	97	0%	1%
4	98	0%	1%
5	96	1%	2%
6	95	3%	1%
7	97	2%	-1%
8	96	2%	-1%
9	97	1%	-1%
10	98	0%	0%
11	95	1%	3%
12	94	4%	0%
13	96	2%	-2%
14	94	4%	-3%
15	95	2%	-2%
16	92	2%	-7%



BEAM DETAILS



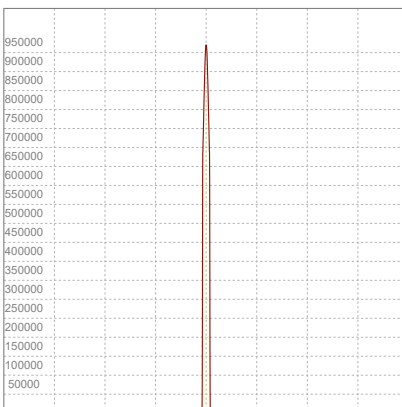
Beam angle 50%	Field angle 10%	Cut off angle 2,5%	Intensity ratio in 120° cone	Intensity ratio in 90° cone
6,4°	7°	7,2°	100,0%	100,0%



BEAM INTENSITIES AND WIDTHS

Distance	1m	2m	3m	4m	5m	7,5m	10m	15m	20m	25m	30m	40m	50m
Distance	3,3ft	6,6ft	9,8ft	13,1ft	16,4ft	24,6ft	32,8ft	49,2ft	65,6ft	82ft	98,4ft	131,2ft	164ft
Lux	969382lx	242346lx	107709lx	60586lx	38775lx	17233lx	9694lx	4308lx	2423lx	1551lx	1077lx	606lx	388lx
Footcand.	90059fcd	22515fcd	10007fcd	5629fcd	3602fcd	1601fcd	901fcd	400fcd	225fcd	144fcd	100fcd	56fcd	36fcd
Beam wid.	0,1m	0,2m	0,3m	0,4m	0,6m	0,8m	1,1m	1,7m	2,2m	2,8m	3,3m	4,4m	5,6m
Beam wid.	0,4ft	0,7ft	1,1ft	1,5ft	1,8ft	2,7ft	3,6ft	5,5ft	7,3ft	9,1ft	10,9ft	14,6ft	18,2ft

LINEAR DISTRIBUTION DIAGRAM

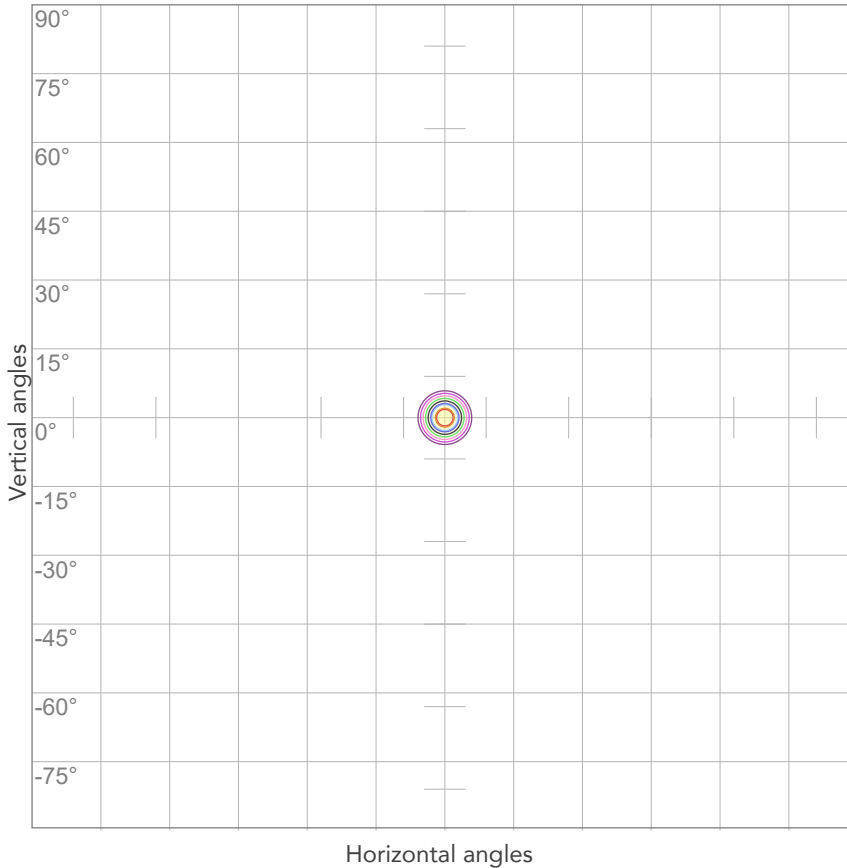


ELECTRICAL SPECIFICATIONS

Input voltage	Input current	Input power	Power FC	Effeciency
226V	1,99A	434,6W	0,97	19lm/W

ISO DIAGRAMS

ISO CANDELA DIAGRAM



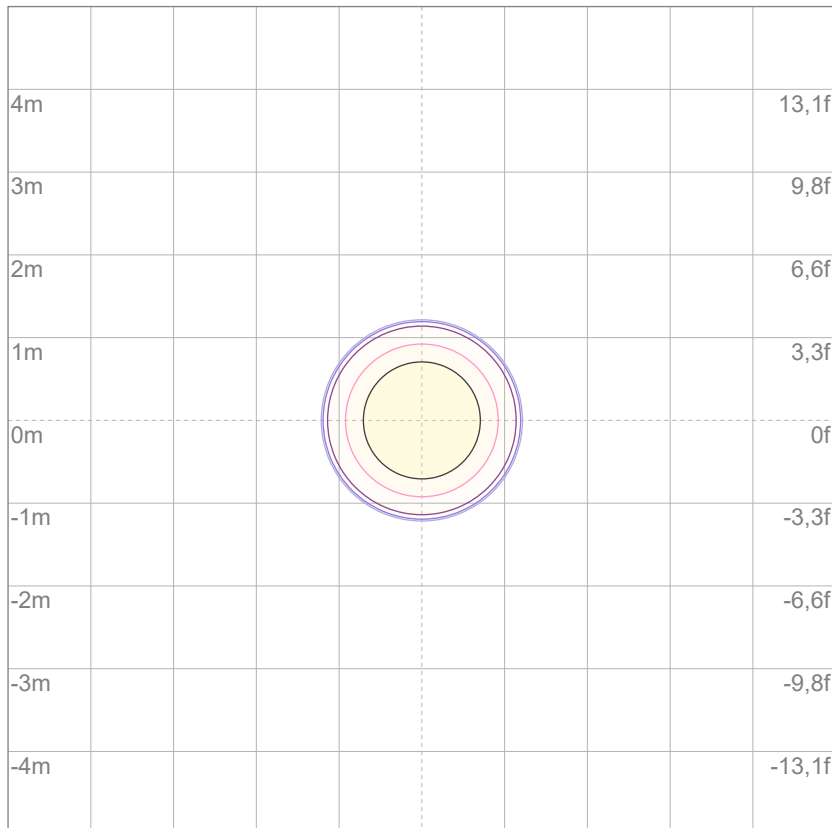
10%	96938 cd
20%	193876 cd
30%	290815 cd
40%	387753 cd
50%	484691 cd
60%	581629 cd
70%	678567 cd
80%	775506 cd

Conditions:

Number of c-planes: 2

Candela at center: 969382 cd

ISO LUX DIAGRAM



3%	291 lx
5%	485 lx
10%	969 lx
30%	2908 lx
50%	4847 lx

Conditions:

Number of c-planes: 2

Lux at center: 9694 lx

Lux distribution on a surface when lamp is mounted at 10 meters from the surface.

Mounting height: 10 meters (33 feet)



Total lumen output:

8728 lm

Peak candela output:

1060528 cd

Light quality:

CRI: 97,7

Color temperature:

4070 K

PRODUCT NAME:

ECLFWHPVW

MEASURAMENT CONDITIONS:

Beam angle:

PRL05

Target:

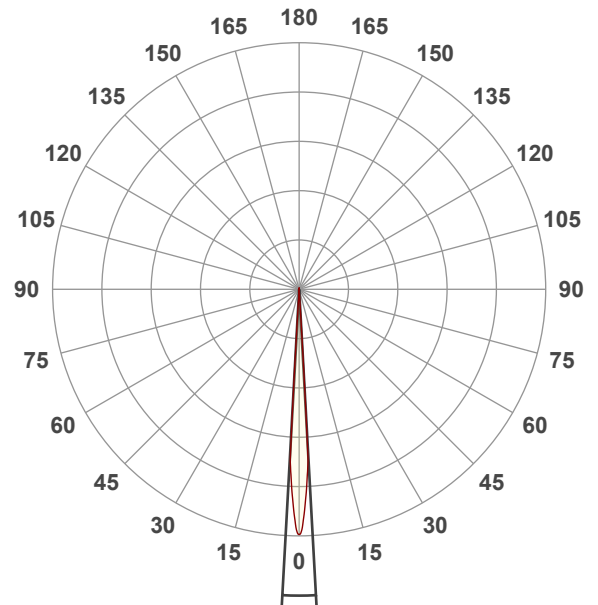
4000K

Operator:

Giuseppe della Peruta

Date and time:

09/01/2026 10:42:36

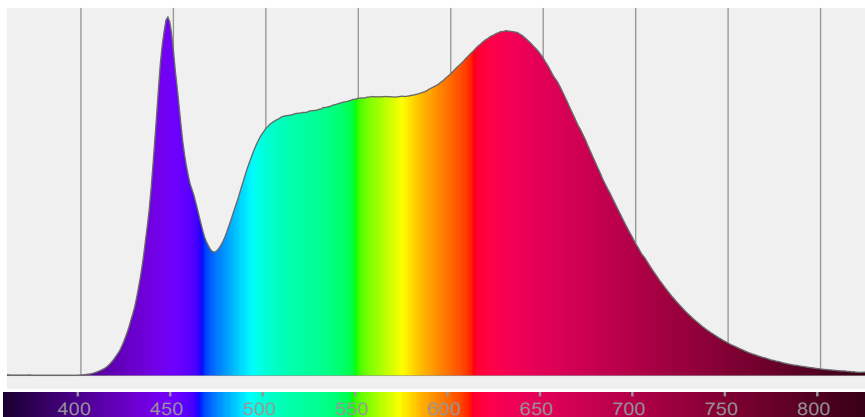


Beam angle 50%: 6,3°

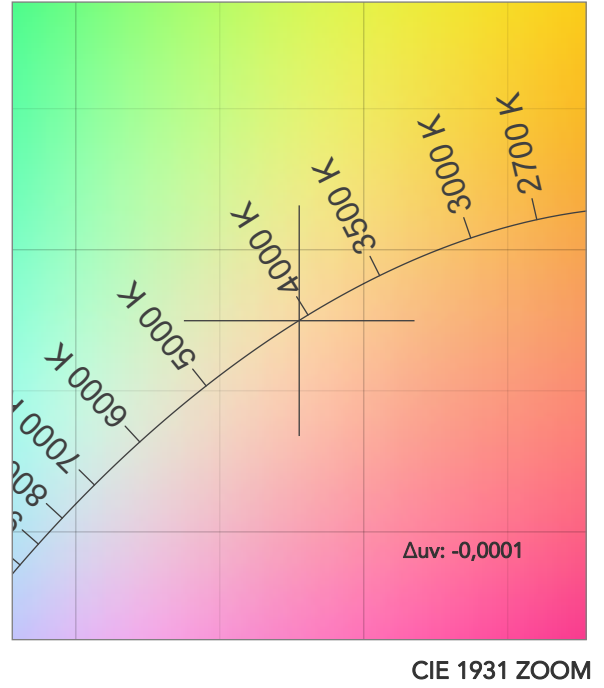
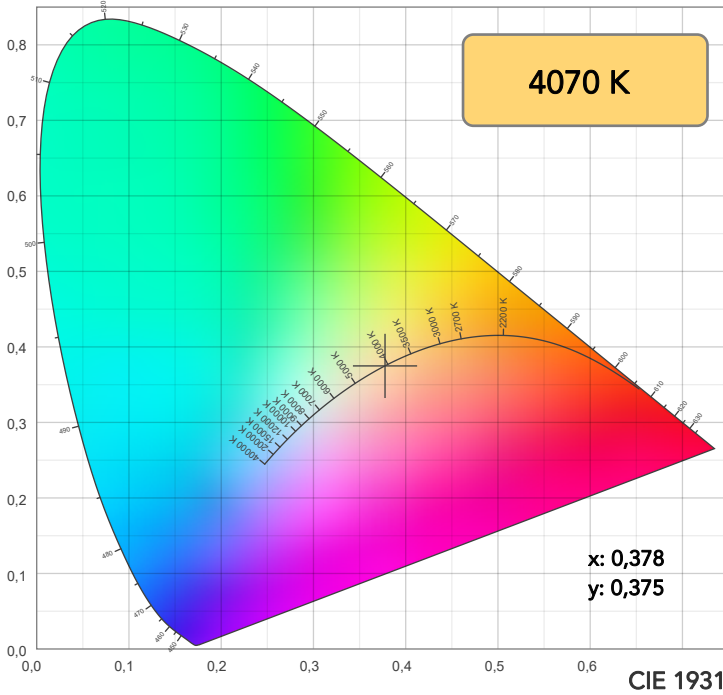
Field angle 10%: 6,9°

Cut off angle 2.5%: 7,1°

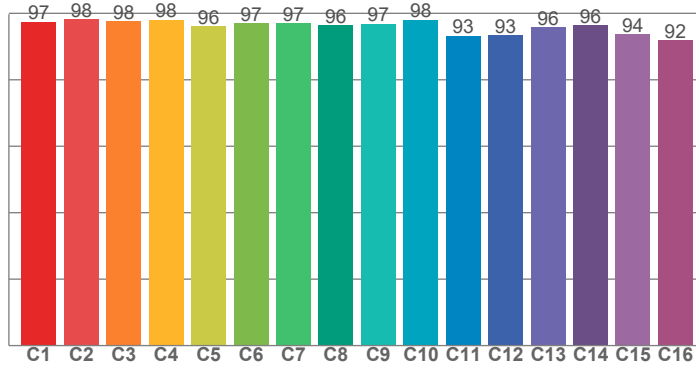
Spectra



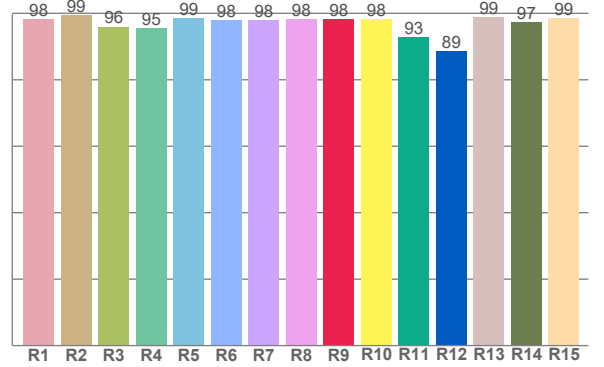
COLOR DETAILS



TM30: 96,2



CRI: 97,7 (R1-R8)



CRI R values, only R1-R8 are used to calculate final CRI value

R1	R2	R3	R4	R5	R6	R7	R8	R9	R10	R11	R12	R13	R14	R15
98,2	99,4	96,0	95,4	98,5	97,8	97,9	98,1	98,2	98,3	92,8	88,6	98,7	97,4	98,5

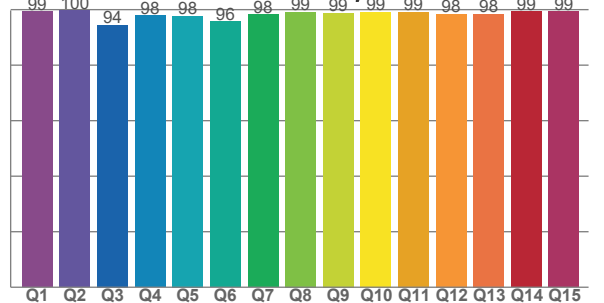
TM30 C values, 16 binned values out of total of 99 C values

C1	C2	C3	C4	C5	C6	C7	C8	C9	C10	C11	C12	C13	C14	C15	C16
97,4	98,2	97,7	98,1	96,1	96,9	97,0	96,4	96,9	98,0	93,2	93,3	95,8	96,3	93,6	91,8

CQS Q values

Q1	Q2	Q3	Q4	Q5	Q6	Q7	Q8	Q9	Q10	Q11	Q12	Q13	Q14	Q15
99,2	99,6	94,4	97,8	97,6	95,7	98,2	99,1	98,7	99,2	99,1	98,4	98,4	99,3	99,4

CQS: 97,8



COLOR PARAMETERS

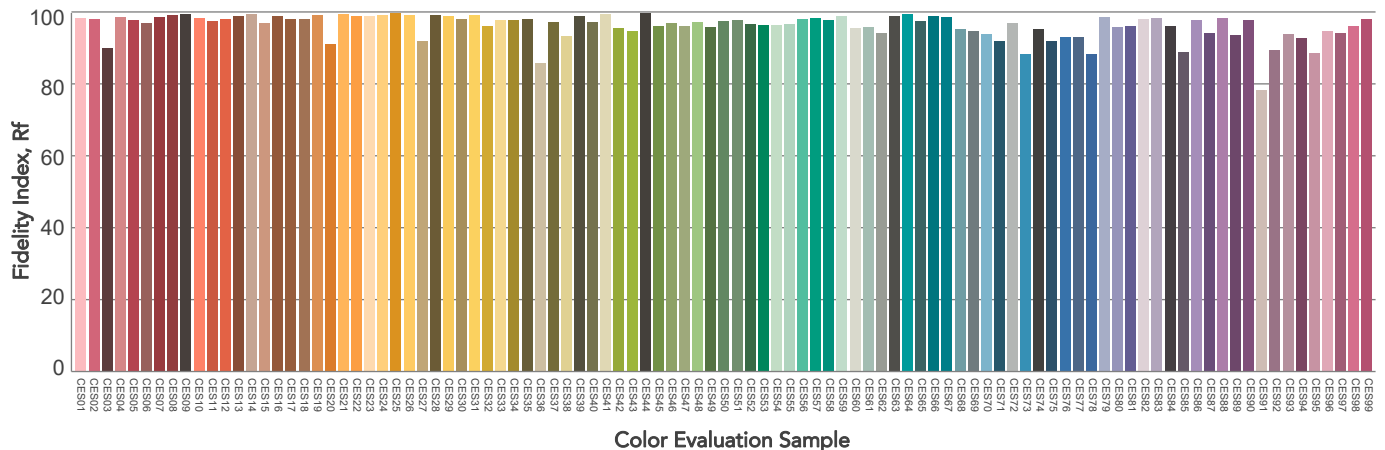
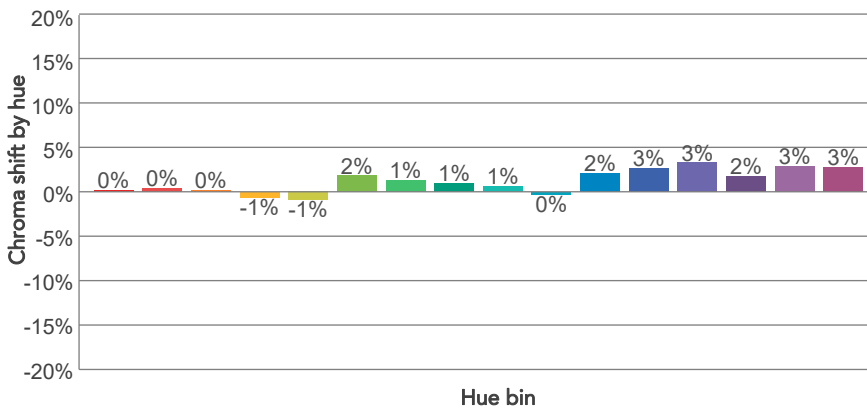
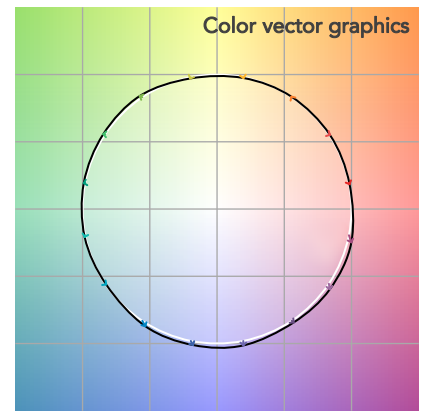
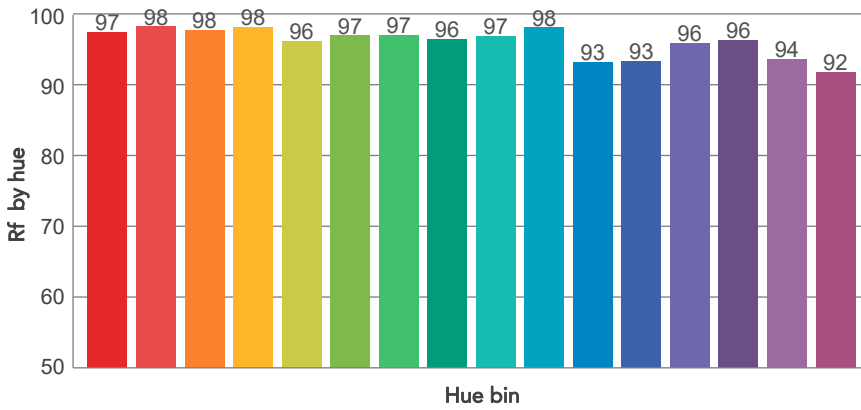
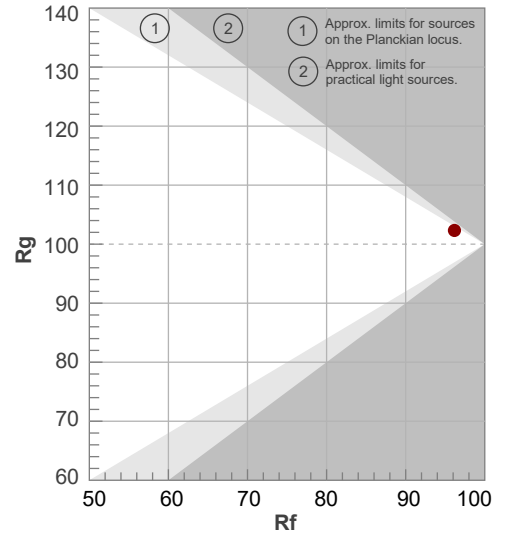
Color temperature	Color rendering index	Red component	Color fidelity	Color gamut	Color quality scale	Television lighting index	Color coordinate cie 1931	Color coordinate cie 1931	Color deviation from black body
CCT	CRI	CRI R9	TM30 Rf	TM30 Rg	CQS	TLCI	x	y	Δuv
4070 K	97,7	98,2	96,2	102,3	97,8	98	0,378	0,375	-0,0001

TM30 DETAILS

Rf 96,2
Fidelity index Rf

Rg 102,3
Gammut index

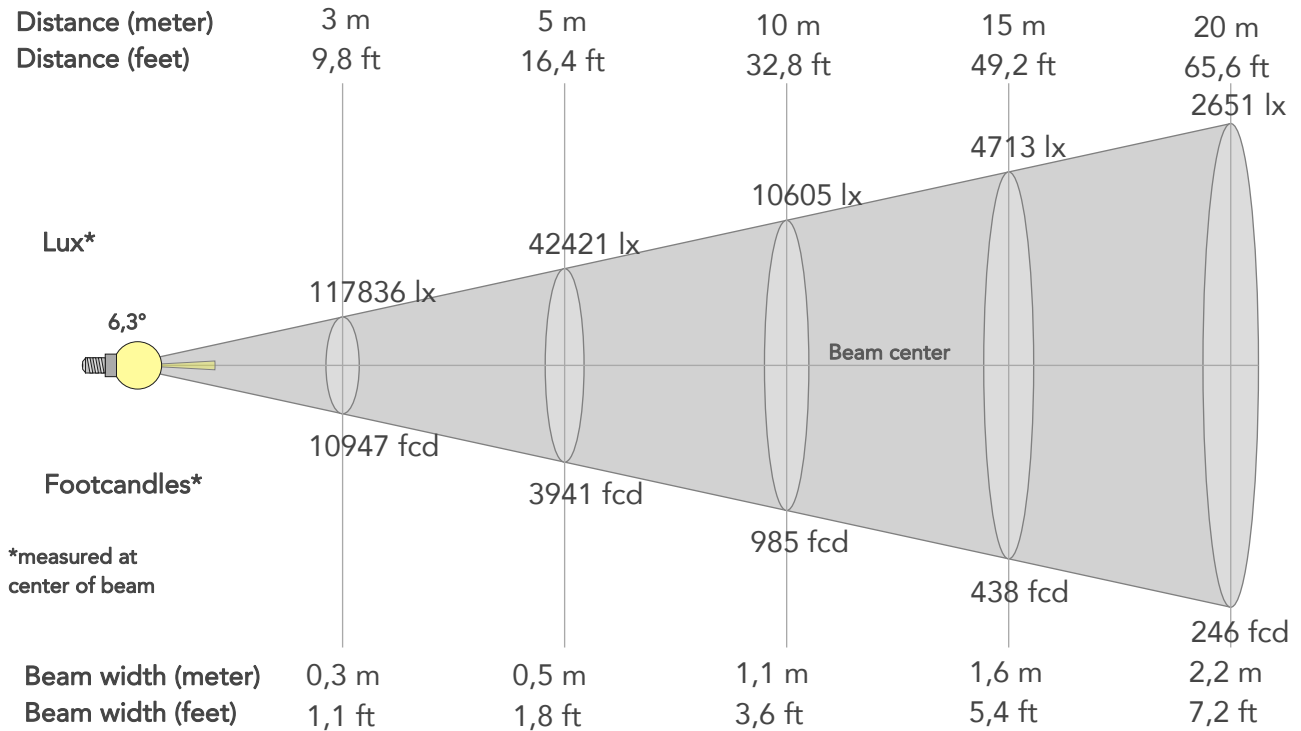
Hue Bin	R _f	Graphic shifts (%)	
		Chroma	Hue
1	97	0%	-1%
2	98	0%	-1%
3	98	0%	0%
4	98	-1%	0%
5	96	-1%	1%
6	97	2%	1%
7	97	1%	1%
8	96	1%	0%
9	97	1%	1%
10	98	0%	1%
11	93	2%	4%
12	93	3%	2%
13	96	3%	-1%
14	96	2%	0%
15	94	3%	-3%
16	92	3%	-5%



BEAM DETAILS



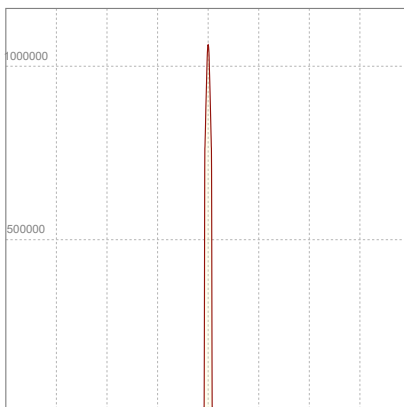
Beam angle 50%	Field angle 10%	Cut off angle 2,5%	Intensity ratio in 120° cone	Intensity ratio in 90° cone
6,3°	6,9°	7,1°	100,0%	100,0%



BEAM INTENSITIES AND WIDTHS

Distance	1m	2m	3m	4m	5m	7,5m	10m	15m	20m	25m	30m	40m	50m
Distance	3,3ft	6,6ft	9,8ft	13,1ft	16,4ft	24,6ft	32,8ft	49,2ft	65,6ft	82ft	98,4ft	131,2ft	164ft
Lux	1060528lx	265132lx	117836lx	66283lx	42421lx	18854lx	10605lx	4713lx	2651lx	1697lx	1178lx	663lx	424lx
Footcand.	98526fcd	24632fcd	10947fcd	6158fcd	3941fcd	1752fcd	985fcd	438fcd	246fcd	158fcd	109fcd	62fcd	39fcd
Beam wid.	0,1m	0,2m	0,3m	0,4m	0,5m	0,8m	1,1m	1,6m	2,2m	2,7m	3,3m	4,4m	5,5m
Beam wid.	0,4ft	0,7ft	1,1ft	1,4ft	1,8ft	2,7ft	3,6ft	5,4ft	7,2ft	9ft	10,8ft	14,4ft	18ft

LINEAR DISTRIBUTION DIAGRAM

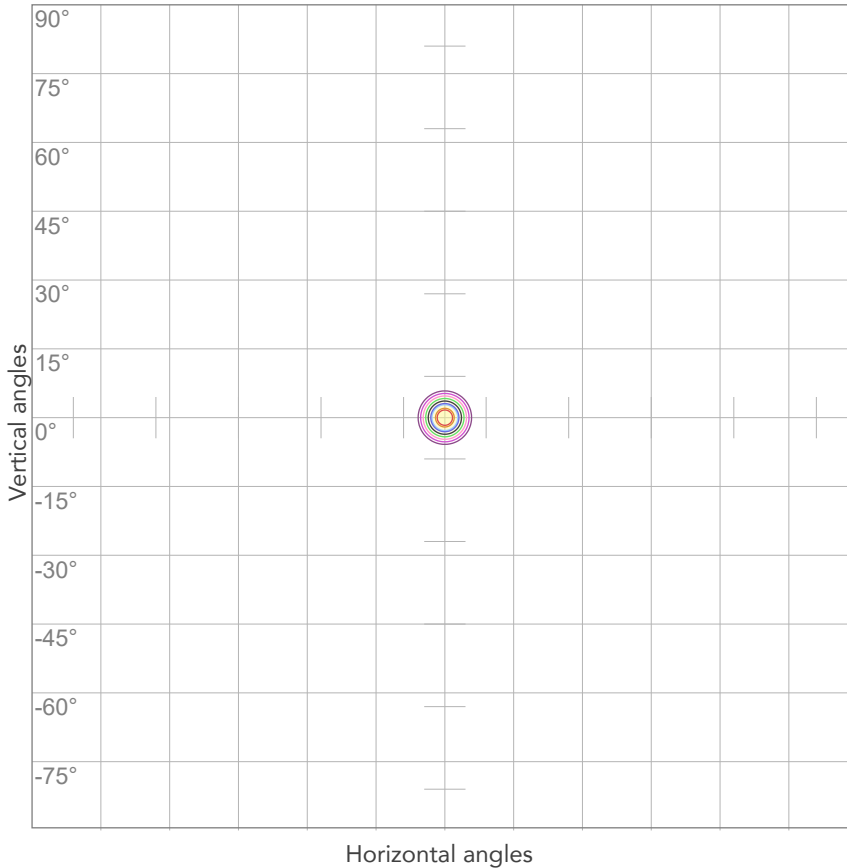


ELECTRICAL SPECIFICATIONS

Input voltage	Input current	Input power	Power FC	Efficiency
228V	1,99A	437,3W	0,97	20lm/W

ISO DIAGRAMS

ISO CANDELA DIAGRAM



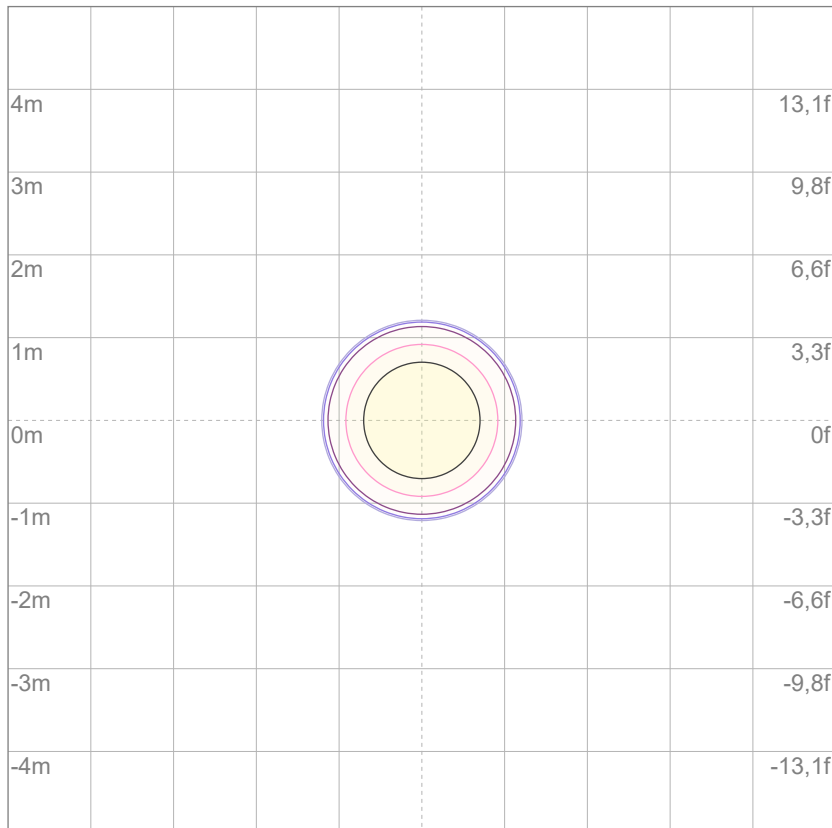
10%	106053 cd
20%	212106 cd
30%	318158 cd
40%	424211 cd
50%	530264 cd
60%	636317 cd
70%	742370 cd
80%	848423 cd

Conditions:

Number of c-planes: 2

Candela at center: 1060528 cd

ISO LUX DIAGRAM



Mounting height: 10 meters (33 feet)

3%	318 lx
5%	530 lx
10%	1061 lx
30%	3182 lx
50%	5303 lx

Conditions:

Number of c-planes: 2

Lux at center: 10,6K lx

Lux distribution on a surface when lamp is mounted at 10 meters from the surface.



Total lumen output:

9519 lm

Peak candela output:

1149352 cd

Light quality:

CRI: 97,0

Color temperature:

5665 K

PRODUCT NAME:

ECLFWHPVW

MEASURAMENT CONDITIONS:

Beam angle:

PRL05

Target:

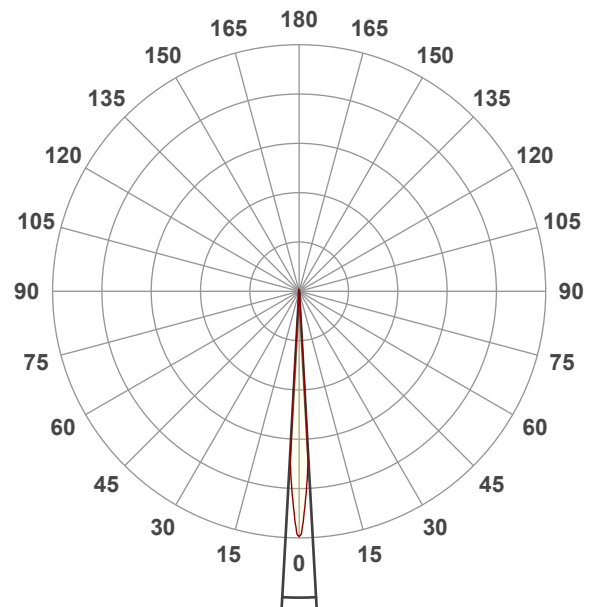
5600K

Operator:

Giuseppe della Peruta

Date and time:

09/01/2026 10:47:14

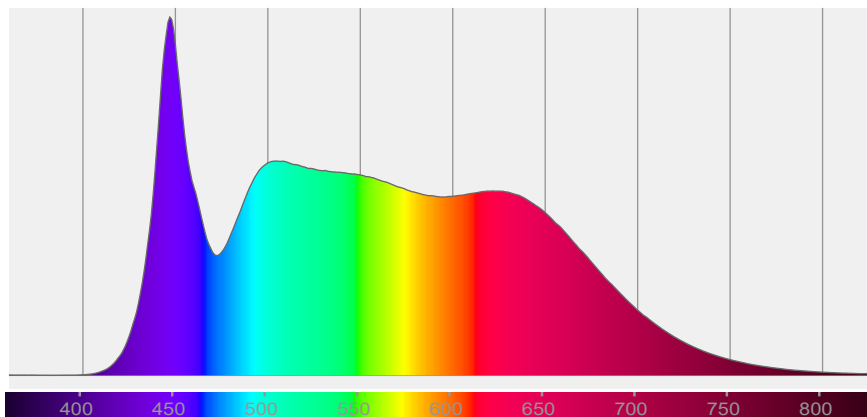


Beam angle 50%: 6,3°

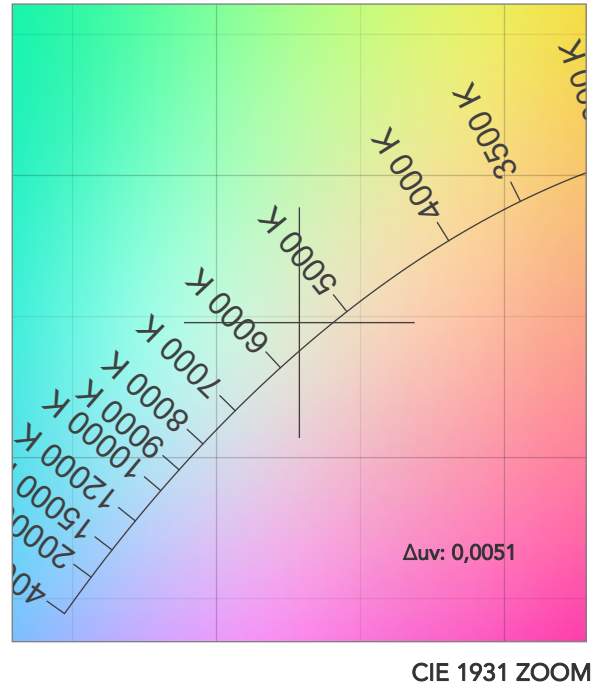
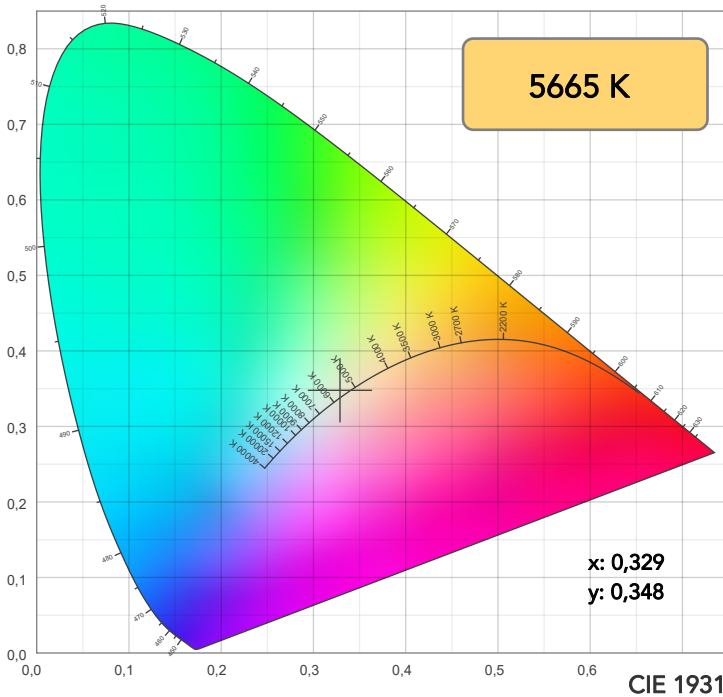
Field angle 10%: 6,9°

Cut off angle 2.5%: 7,2°

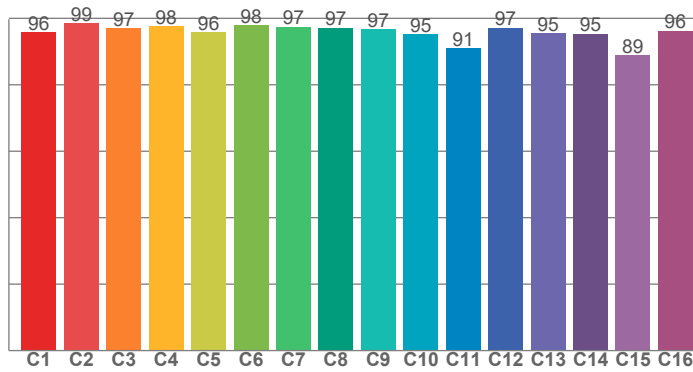
Spectra



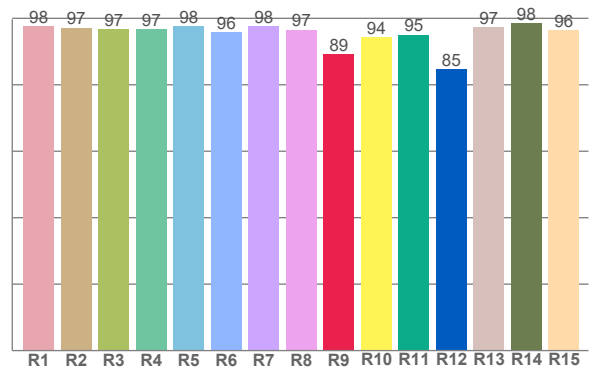
COLOR DETAILS



TM30: 95,7



CRI: 97,0 (R1-R8)



CRI R values, only R1-R8 are used to calculate final CRI value

R1	R2	R3	R4	R5	R6	R7	R8	R9	R10	R11	R12	R13	R14	R15
97,7	97,2	96,8	96,8	97,6	95,8	97,6	96,6	89,3	94,4	95,1	84,8	97,4	98,4	96,4

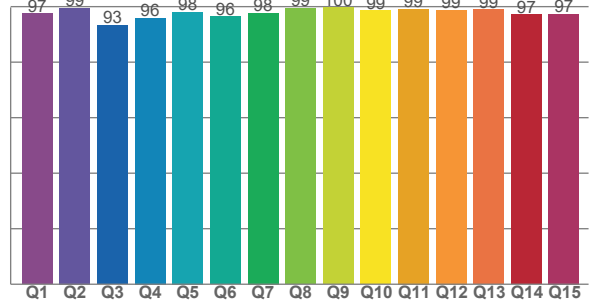
TM30 C values, 16 binned values out of total of 99 C values

C1	C2	C3	C4	C5	C6	C7	C8	C9	C10	C11	C12	C13	C14	C15	C16
95,8	98,5	97,0	97,6	95,7	98,0	97,5	97,1	96,6	95,2	90,9	97,1	95,5	95,3	88,9	96,2

CQS Q values

Q1	Q2	Q3	Q4	Q5	Q6	Q7	Q8	Q9	Q10	Q11	Q12	Q13	Q14	Q15
97,5	99,4	93,3	95,9	98,0	96,5	97,7	99,4	99,7	98,6	99,1	98,8	99,0	97,2	97,3

CQS: 97,3



COLOR PARAMETERS

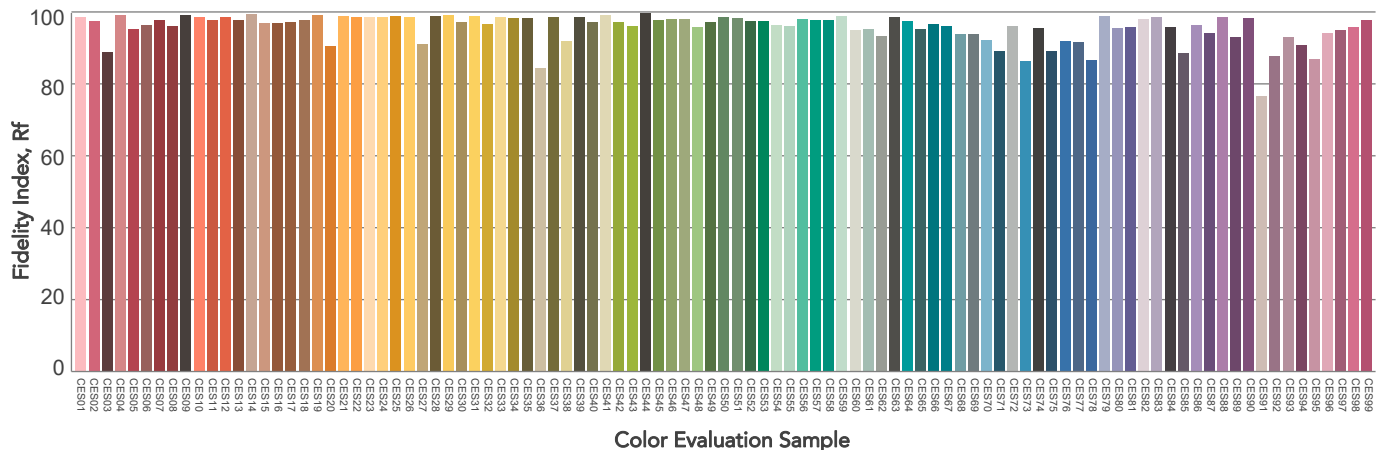
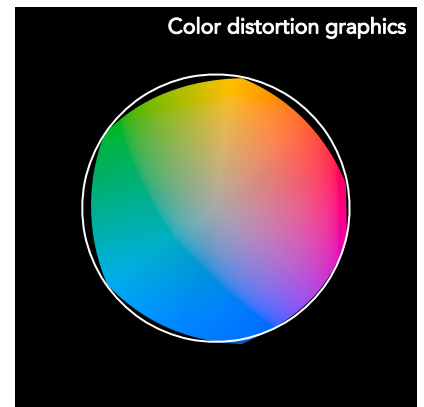
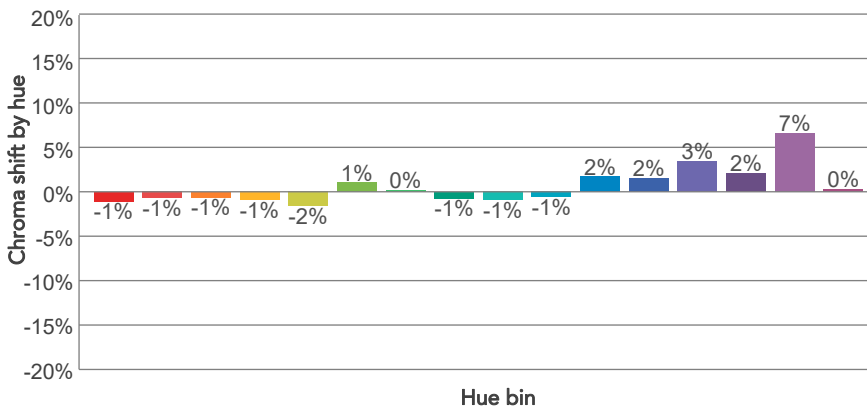
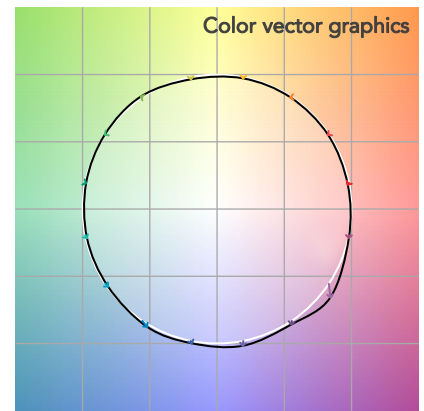
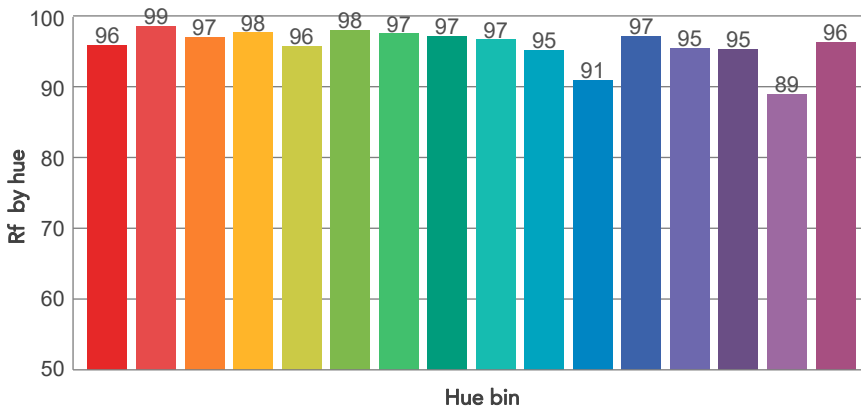
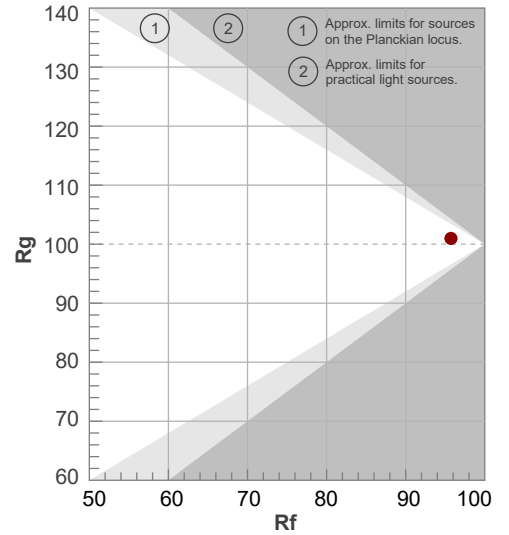
Color temperature	Color rendering index	Red component	Color fidelity	Color gamut	Color quality scale	Television lighting index	Color coordinate cie 1931	Color coordinate cie 1931	Color deviation from black body
CCT	CRI	CRI R9	TM30 Rf	TM30 Rg	CQS	TLCI	x	y	Δuv
5665 K	97,0	89,3	95,7	101,0	97,3	99	0,329	0,348	0,0051

TM30 DETAILS

Rf 95,7
Fidelity index Rf

Rg 101,0
Gammut index

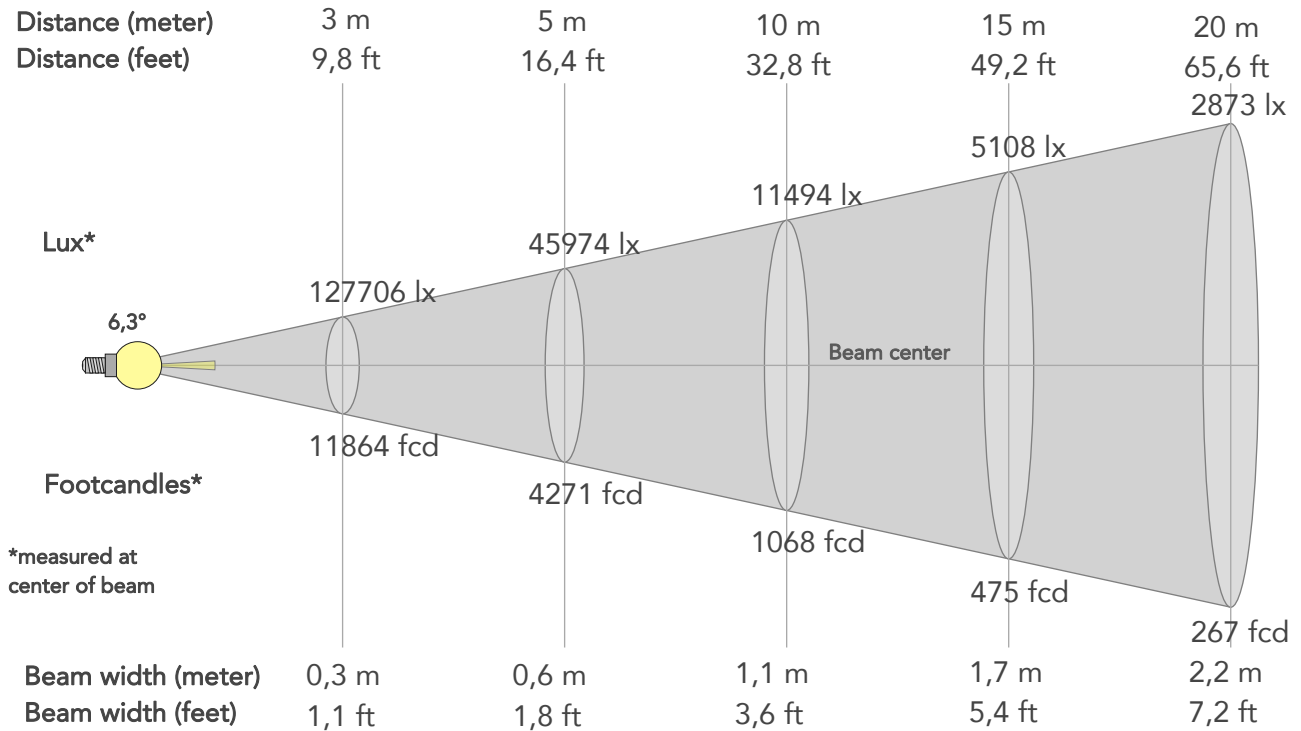
Hue Bin	R _f	Graphic shifts (%)	
		Chroma	Hue
1	96	-1%	-1%
2	99	-1%	0%
3	97	-1%	1%
4	98	-1%	0%
5	96	-2%	0%
6	98	1%	1%
7	97	0%	0%
8	97	-1%	0%
9	97	-1%	2%
10	95	-1%	3%
11	91	2%	5%
12	97	2%	1%
13	95	3%	-1%
14	95	2%	-2%
15	89	7%	-8%
16	96	0%	-2%



BEAM DETAILS



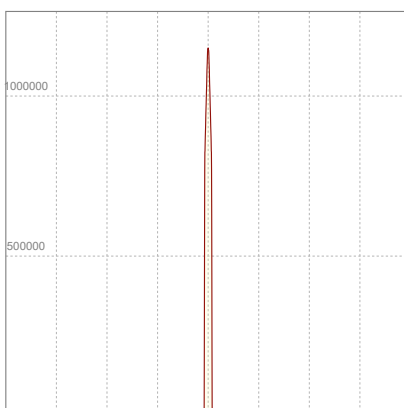
Beam angle 50%	Field angle 10%	Cut off angle 2,5%	Intensity ratio in 120° cone	Intensity ratio in 90° cone
6,3°	6,9°	7,2°	100,0%	100,0%



BEAM INTENSITIES AND WIDTHS

Distance	1m	2m	3m	4m	5m	7,5m	10m	15m	20m	25m	30m	40m	50m
Distance	3,3ft	6,6ft	9,8ft	13,1ft	16,4ft	24,6ft	32,8ft	49,2ft	65,6ft	82ft	98,4ft	131,2ft	164ft
Lux	1149352lx	287338lx	127706lx	71835lx	45974lx	20433lx	11494lx	5108lx	2873lx	1839lx	1277lx	718lx	460lx
Footcand.	106778fcd	26695fcd	11864fcd	6674fcd	4271fcd	1898fcd	1068fcd	475fcd	267fcd	171fcd	119fcd	67fcd	43fcd
Beam wid.	0,1m	0,2m	0,3m	0,4m	0,6m	0,8m	1,1m	1,7m	2,2m	2,8m	3,3m	4,4m	5,5m
Beam wid.	0,4ft	0,7ft	1,1ft	1,4ft	1,8ft	2,7ft	3,6ft	5,4ft	7,2ft	9,1ft	10,9ft	14,5ft	18,1ft

LINEAR DISTRIBUTION DIAGRAM

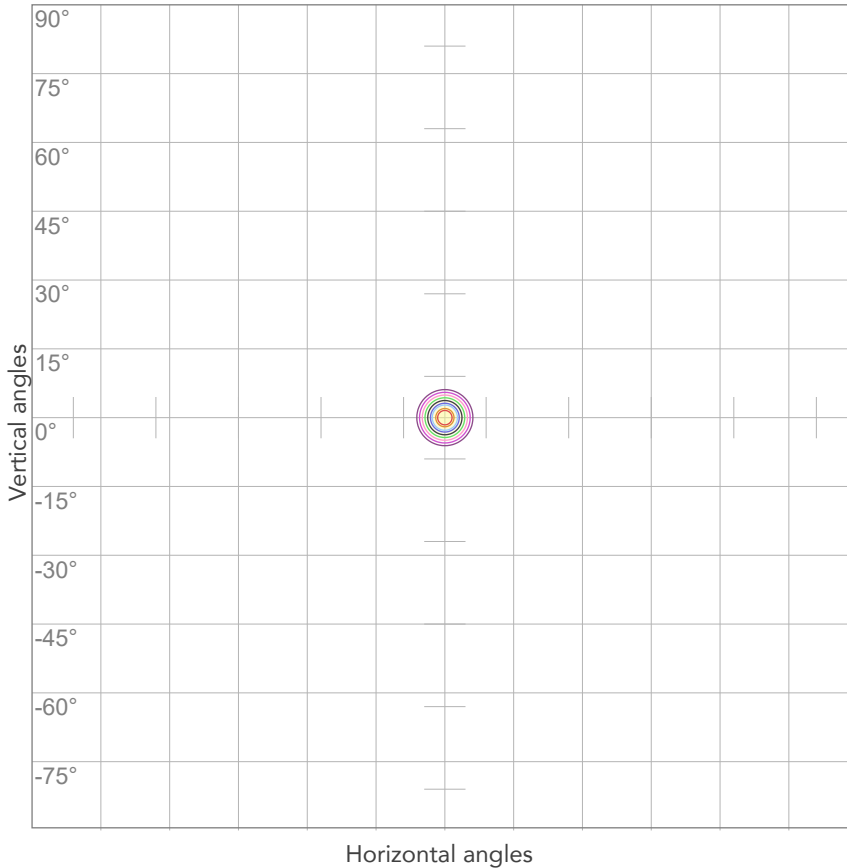


ELECTRICAL SPECIFICATIONS

Input voltage	Input current	Input power	Power FC	Efficiency
225V	2,00A	436,3W	0,97	22lm/W

ISO DIAGRAMS

ISO CANDELA DIAGRAM



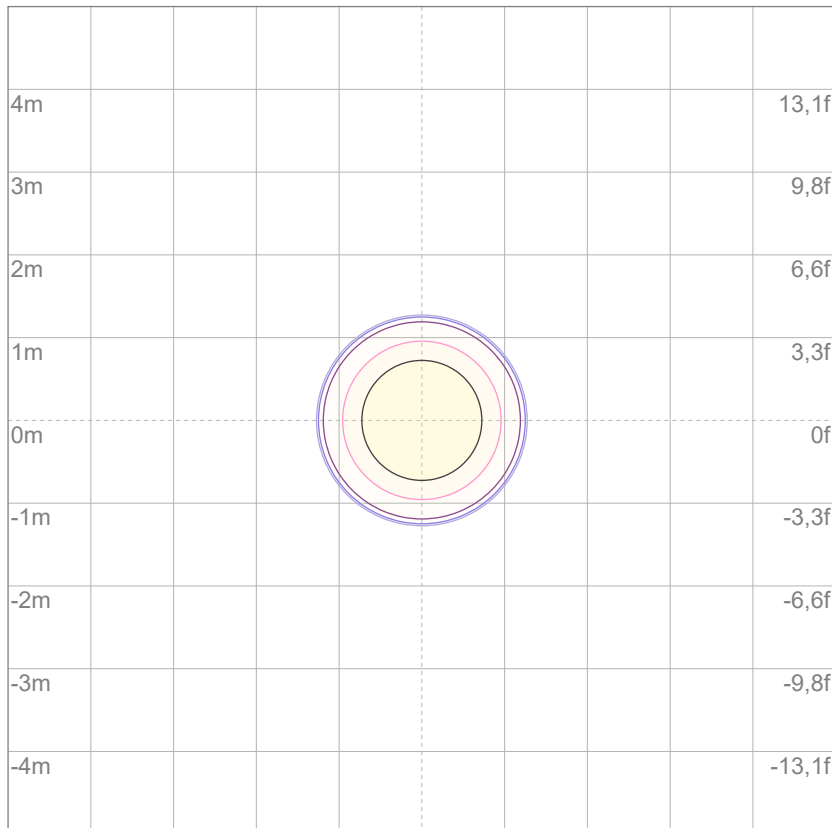
10%	114935 cd
20%	229870 cd
30%	344806 cd
40%	459741 cd
50%	574676 cd
60%	689611 cd
70%	804547 cd
80%	919482 cd

Conditions:

Number of c-planes: 2

Candela at center: 1149352 cd

ISO LUX DIAGRAM



3%	345 lx
5%	575 lx
10%	1149 lx
30%	3448 lx
50%	5747 lx

Conditions:

Number of c-planes: 2

Lux at center: 11,5K lx

Lux distribution on a surface when lamp is mounted at 10 meters from the surface.

Mounting height: 10 meters (33 feet)



Total lumen output:

9450 lm

Peak candela output:

1142013 cd

Light quality:

CRI: 96,3

Color temperature:

6041 K

PRODUCT NAME:

ECLFWHPVW

MEASURAMENT CONDITIONS:

Beam angle:

PRL05

Target:

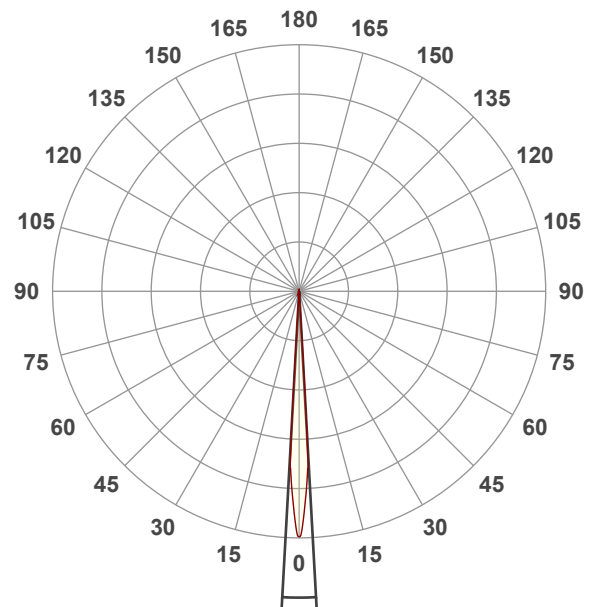
6000K

Operator:

Giuseppe della Peruta

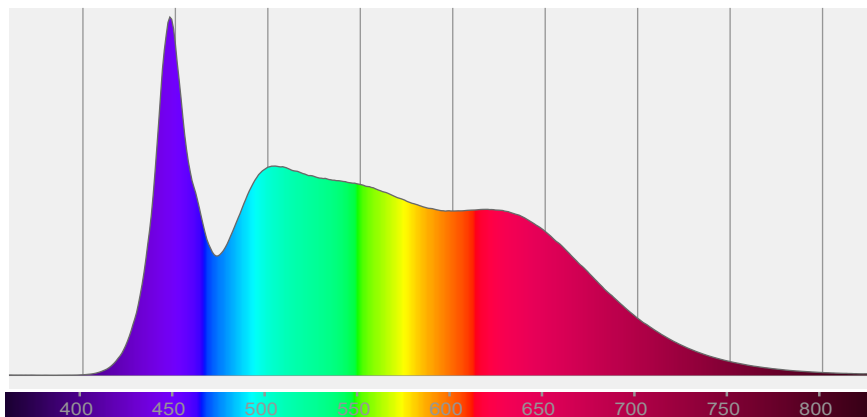
Date and time:

09/01/2026 10:50:50

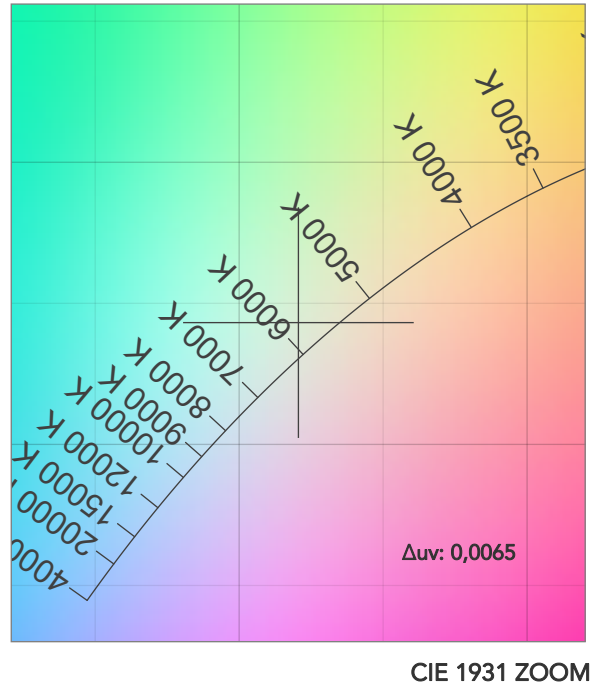
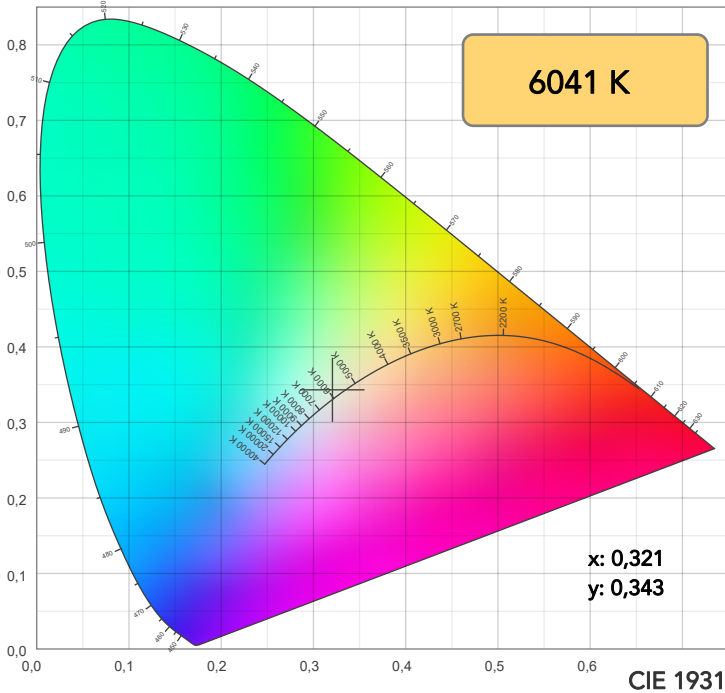


Beam angle 50%: 6,3°
Field angle 10%: 6,9°
Cut off angle 2.5%: 7,2°

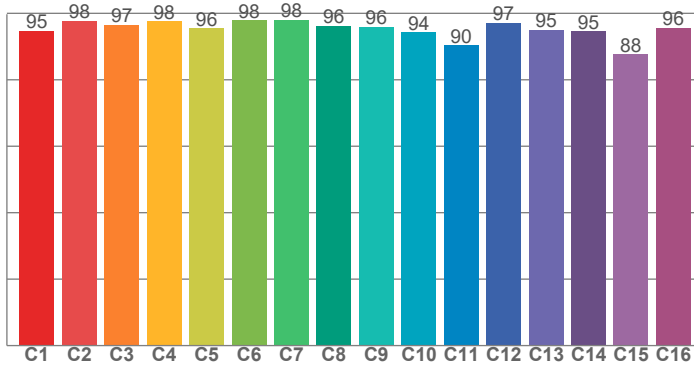
Spectra



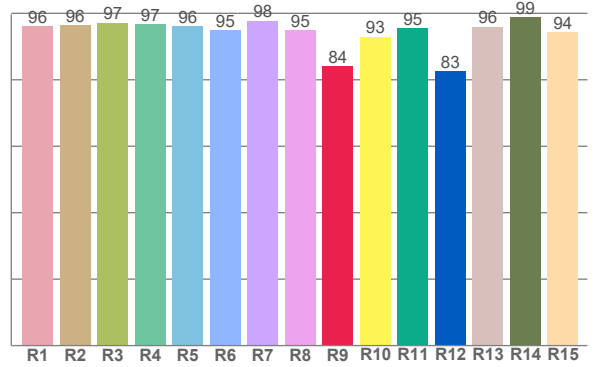
COLOR DETAILS



TM30: 95,2



CRI: 96,3 (R1-R8)



CRI R values, only R1-R8 are used to calculate final CRI value

R1	R2	R3	R4	R5	R6	R7	R8	R9	R10	R11	R12	R13	R14	R15
96,2	96,4	97,2	96,8	96,2	95,0	97,8	95,0	84,2	93,0	95,5	82,7	96,0	98,8	94,4

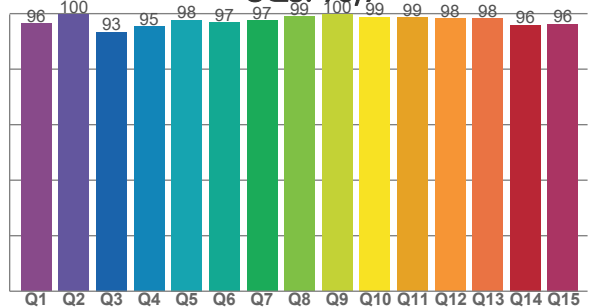
TM30 C values, 16 binned values out of total of 99 C values

C1	C2	C3	C4	C5	C6	C7	C8	C9	C10	C11	C12	C13	C14	C15	C16
94,7	97,8	96,5	97,5	95,6	97,9	98,1	96,3	95,9	94,3	90,4	97,2	95,0	94,6	87,7	95,6

CQS Q values

Q1	Q2	Q3	Q4	Q5	Q6	Q7	Q8	Q9	Q10	Q11	Q12	Q13	Q14	Q15
96,4	99,6	93,4	95,4	97,8	96,8	97,4	99,0	99,6	98,7	98,6	98,2	98,3	96,0	96,3

CQS: 96,9



COLOR PARAMETERS

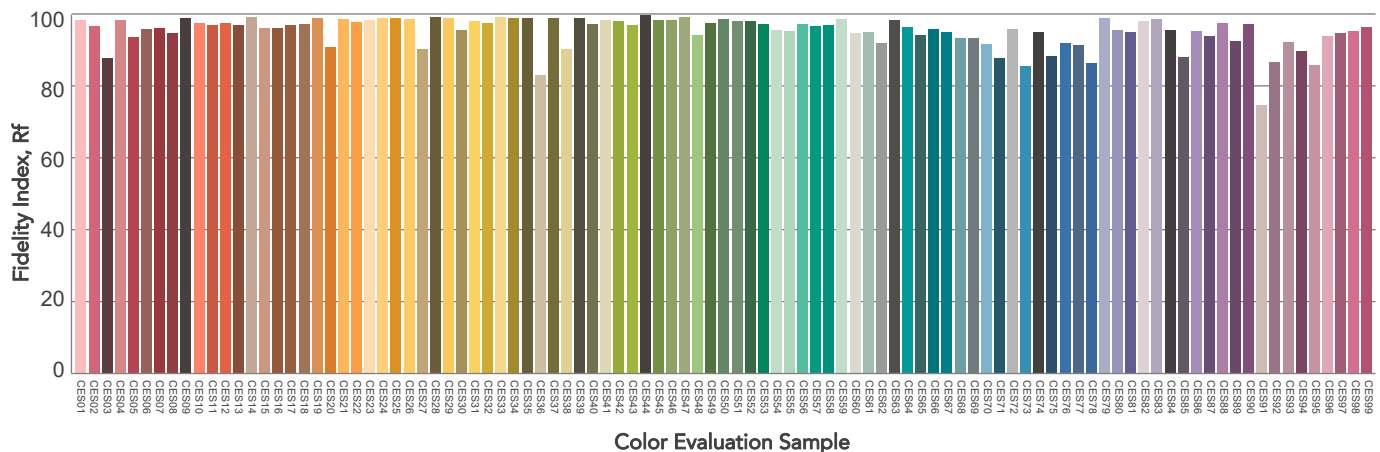
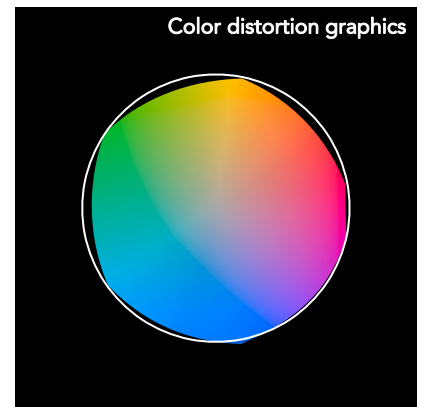
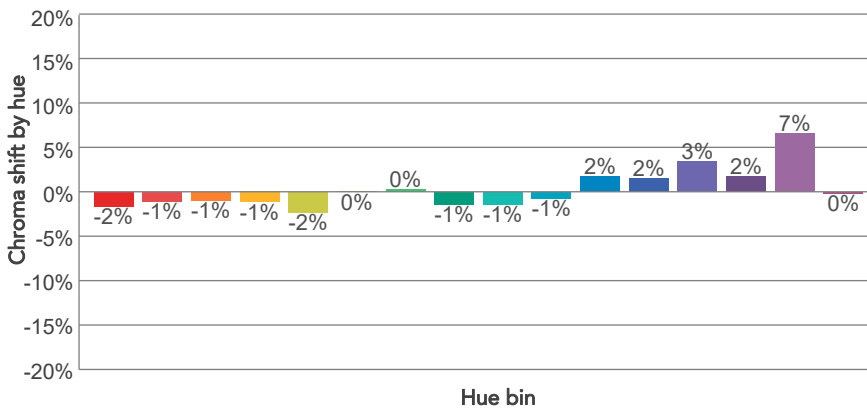
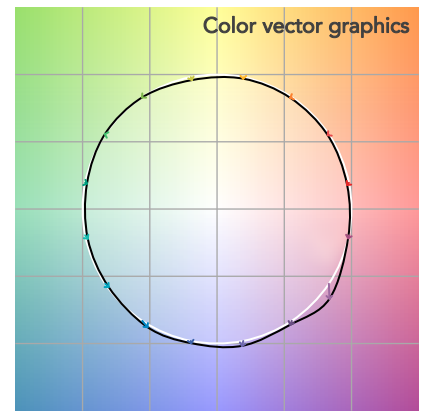
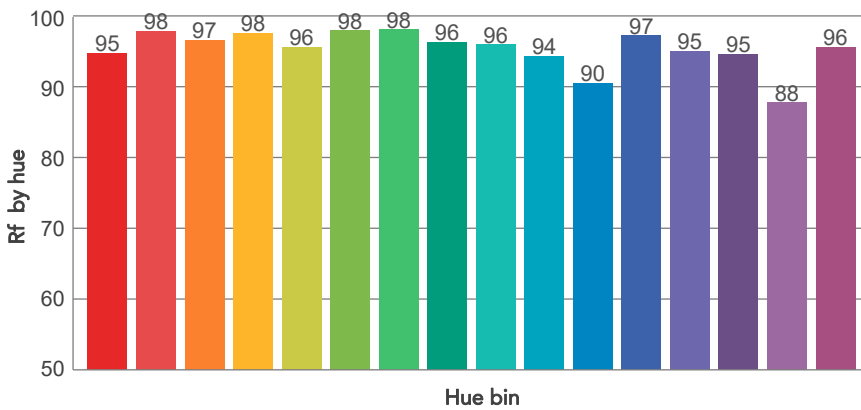
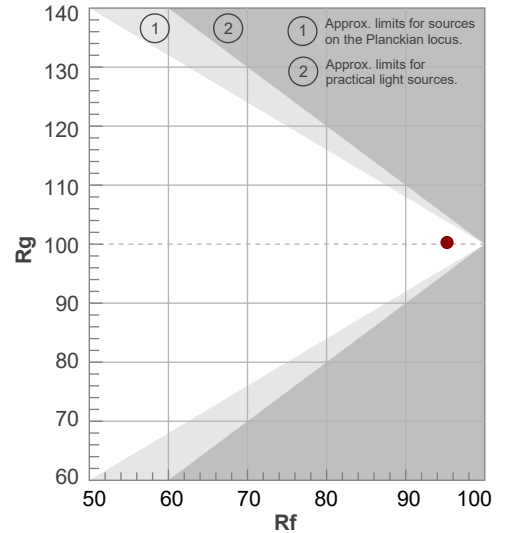
Color temperature	Color rendering index	Red component	Color fidelity	Color gamut	Color quality scale	Television lighting index	Color coordinate cie 1931	Color coordinate cie 1931	Color deviation from black body
CCT	CRI	CRI R9	TM30 Rf	TM30 Rg	CQS	TLCI	x	y	Δuv
6041 K	96,3	84,2	95,2	100,3	96,9	99	0,321	0,343	0,0065

TM30 DETAILS

Rf 95,2
Fidelity index Rf

Rg 100,3
Gammut index

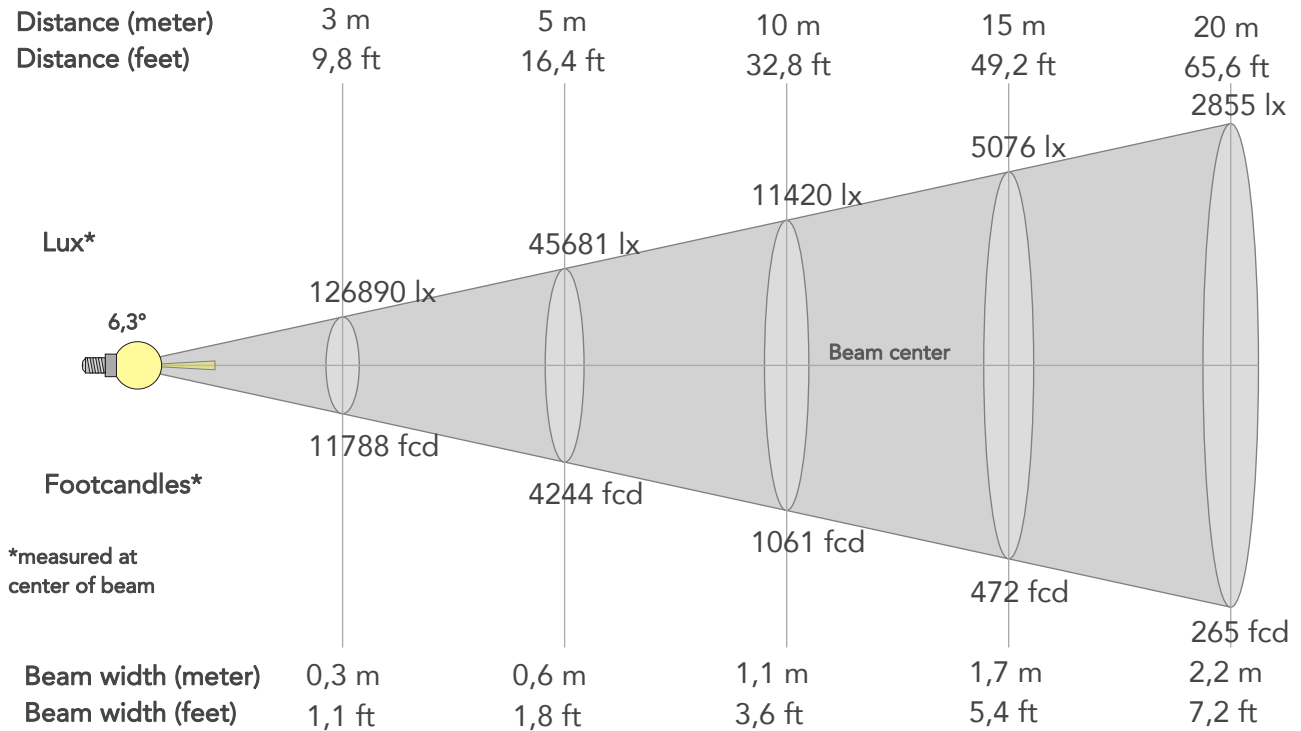
Hue Bin	R _f	Graphic shifts (%)	
		Chroma	Hue
1	95	-2%	-1%
2	98	-1%	0%
3	97	-1%	1%
4	98	-1%	0%
5	96	-2%	0%
6	98	0%	0%
7	98	0%	0%
8	96	-1%	0%
9	96	-1%	3%
10	94	-1%	3%
11	90	2%	6%
12	97	2%	1%
13	95	3%	-2%
14	95	2%	-3%
15	88	7%	-9%
16	96	0%	-2%



BEAM DETAILS



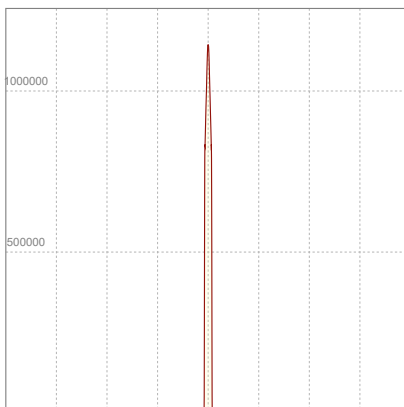
Beam angle 50%	Field angle 10%	Cut off angle 2,5%	Intensity ratio in 120° cone	Intensity ratio in 90° cone
6,3°	6,9°	7,2°	100,0%	100,0%



BEAM INTENSITIES AND WIDTHS

Distance	1m	2m	3m	4m	5m	7,5m	10m	15m	20m	25m	30m	40m	50m
Distance	3,3ft	6,6ft	9,8ft	13,1ft	16,4ft	24,6ft	32,8ft	49,2ft	65,6ft	82ft	98,4ft	131,2ft	164ft
Lux	1142013lx	285503lx	126890lx	71376lx	45681lx	20302lx	11420lx	5076lx	2855lx	1827lx	1269lx	714lx	457lx
Footcand.	106096fcd	26524fcd	11788fcd	6631fcd	4244fcd	1886fcd	1061fcd	472fcd	265fcd	170fcd	118fcd	66fcd	42fcd
Beam wid.	0,1m	0,2m	0,3m	0,4m	0,6m	0,8m	1,1m	1,7m	2,2m	2,8m	3,3m	4,4m	5,5m
Beam wid.	0,4ft	0,7ft	1,1ft	1,4ft	1,8ft	2,7ft	3,6ft	5,4ft	7,2ft	9,1ft	10,9ft	14,5ft	18,1ft

LINEAR DISTRIBUTION DIAGRAM

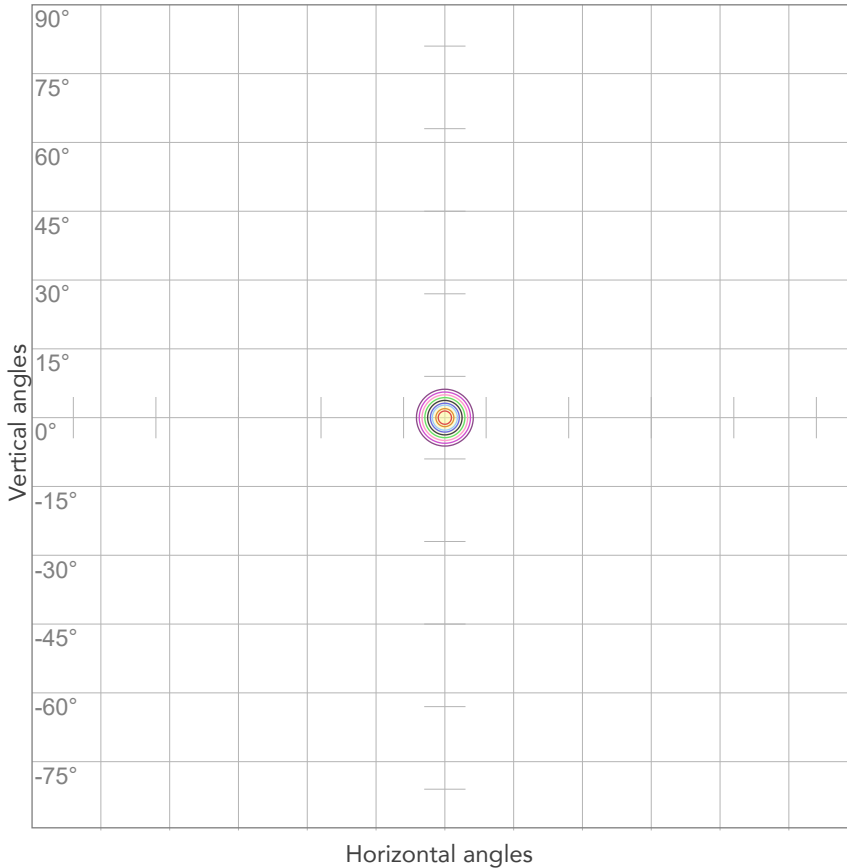


ELECTRICAL SPECIFICATIONS

Input voltage	Input current	Input power	Power FC	Efficiency
228V	1,93A	424,7W	0,96	22lm/W

ISO DIAGRAMS

ISO CANDELA DIAGRAM



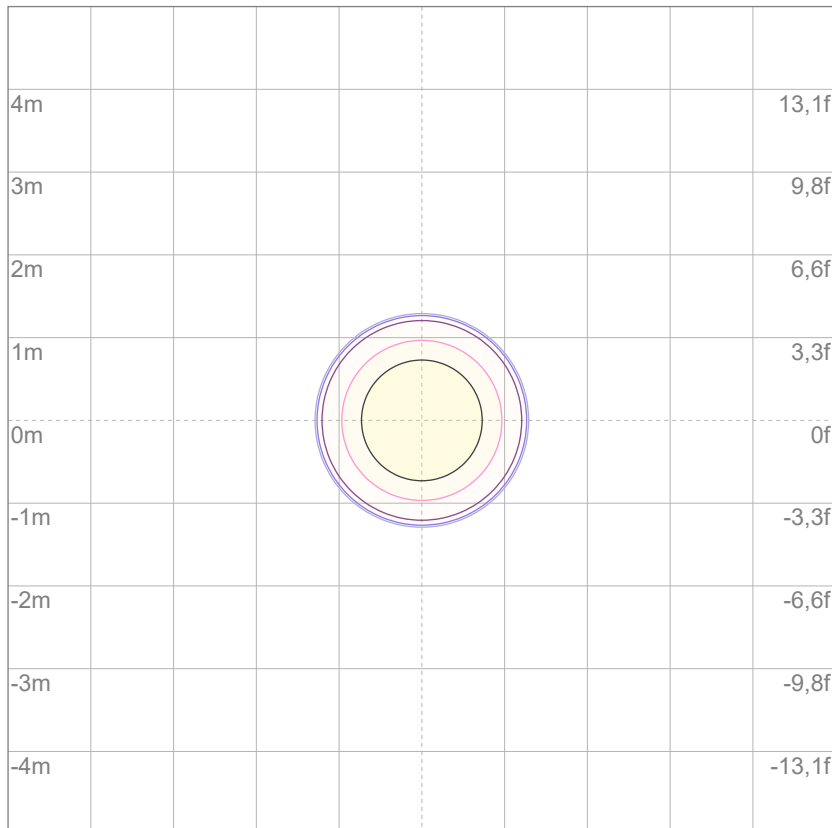
10%	114201 cd
20%	228403 cd
30%	342604 cd
40%	456805 cd
50%	571006 cd
60%	685208 cd
70%	799409 cd
80%	913610 cd

Conditions:

Number of c-planes: 2

Candela at center: 1142013 cd

ISO LUX DIAGRAM



3%	343 lx
5%	571 lx
10%	1142 lx
30%	3426 lx
50%	5710 lx

Conditions:

Number of c-planes: 2

Lux at center: 11,4K lx

Lux distribution on a surface when lamp is mounted at 10 meters from the surface.

Mounting height: 10 meters (33 feet)