

Astra Profile500LTIP

IP65 500W Moving Profile, with 6500K LED source, 4° - 50° zoom

ORDER CODE: **ASTRAPROF500LTIP**



Astra Profile500LTIP is a high-power, versatile Long Throw and IP65-rated LED moving profile, designed to deliver exceptional brightness and robust performance in both indoor and outdoor environments.

Featuring a 500W white LED source at 6,500K, it produces a stunning 25'000 lumen output (goniometer), providing arena level output.

The 156 mm front lens combined with a custom designed long throw lens, projects a fat, even beam with fast zoom from from 4° to 50°, maintaining sharp projections and uniform beam quality across the entire zoom range. Beam shaping is precise thanks to four framing shutters, while additional creative tools include a linear CMY system, linear CTO, one color wheel, a rotating gobo wheel, a fixed gobo wheel, animation wheel, two frost filters, two overlapping linear prisms for dynamic aerial effects, and an iris.

Astra Profile500LTIP offers precise beam shaping with four framing shutters, each with independent plane rotation and full curtain capability. Additional creative tools include a linear CMY system, linear CTO system, one color wheel, a rotating gobo wheel with seven gobos, an animation wheel, a frost and two overlapping linear prisms for dynamic aerial effects. Housed in a die-cast magnesium alloy body with full IP65-rated construction for outdoor use, **Astra Profile500LTIP** is designed for reliability in any environment but keeps lightweight. With fast pan and tilt movement and internal features, high-resolution control, and integrated CRMX wireless connectivity plus Ethernet-based protocols, it ensures fast setup and flexible operation for live events and concerts, theatre and broadcast, corporate productions, and outdoor shows.

MAIN FEATURES

- 500 W white LED source, 6,500 K, 25'000 lm (goniometer)
- 156 mm front lens with fast 4°-50° zoom
- CMY+CTO colour mixing, one colour wheel, 4 framing shutters, 1 rotating gobo wheel, 1 fixed gobo wheel, 1 animation wheel, 2 frost, 2 prisms, iris
- IP65-rated construction for reliable outdoor use

TECHNICAL SPECIFICATION

LIGHT SOURCE

- Source: 500W White LED
- CCT: 6.500K
- Luminous flux: (4,2°) 15'370 lm - (50,1°) 24'649 lm @Full
- Lux: (4,2°) 121'742 lx - (50,1°) 1'924lx
- CRI: > 70 (CCT 5.600K and CRI > 90 with filter on color wheel)
- Source life expectancy: > 50.000 hrs (L70B10 @Ta 25° C / 77° F)

OPTICS

- Zoom range: 4,2° - 50,1° motorised linear zoom
- Lens diameter: 156mm / 6.14"
- Lens type: HD anti-reflection lenses with achromatic coating
- Focus: motorised

COLOUR SYSTEM

- Colour mixing: CMY colour system on 3 gradually fading colour wheels
- CCT: linear CTO correction 2.700 K ~ 6.500 K
- Colour wheel: open + high CRI filter + 5 colour colour filters

DYNAMIC EFFECTS

- Control Resolution: 16-bit dimmer
- Shutter system: 4 shutter blades with position and ±30° angle adjustment, ±45° rotation of the complete framing system
- Animation wheel: animation wheel with CW and CCW rotation
- Rotating gobos: 7 rotating gobos + open, interchangeable, indexing
- Gobo size: outer: 25 mm - image: 20 mm - thickness: up to 3 mm
- Fixed gobos: 8 fixed gobos + open
- FX generator: 2 prisms overlap for spectacular aerial effects
- Circular prism: 4f with bi-directional rotation
- Linear prism: 6f with bi-directional rotation
- Frost: dual soft-edge and heavy with one interchangeable element
- Iris: 5 - 100% motorised iris

BODY

- Hardware on-board: sockets for quick-Lock Omega bracket (clamp not included)
- Pan range: 540°
- Tilt range: 270°
- Pan/Tilt resolution: bit 8 / 16-bit
- Feedback: automatic repositioning after accidental movement
- Body: Weatherproof IP65 construction with die-cast magnesium alloy
- Body colour: black

CONTROL

- Protocols: DMX512, RDM, ArtNet, sACN, CRMX
- DMX channels: 43channel

- Wireless Control: Included LumenRadio Timo Fx DMX/RDM receiver compatible with CRMX (Lumen Radio) and W-DMX (Wireless DMX)
- RDM: RDM for remote monitoring and settings
- Display: Graphic User Interface
- Firmware upgrade: via DMX with UPBOXPRO/UPBOX2 (USB-DMX interface not included) or via USB pen drive
- EtherFlow: Ethernet pass-through switch that preserves network connectivity even when the fixture is unpowered.

ELECTRONICS

- Dimmer: linear 0 ~ 100% electronic dimmer
- Dimmer curves: 4 selectable dimming modes available
- Strobe / shutter: 1 - 30 Hz, electronic
- Display battery: self-charging battery backup
- Operating temperature: -20° ~ +45° Ta
- LED Control: flicker free frequency with adjustable PWM
- Selectable PWM: 600 ~ 50.000 Hz

ELECTRICAL

- Mains power supply: 100-240V - 50/60Hz
- Max power consumption: 788W
- Standby power: 92 W
- Output (at 230V): 4 units on a single power line
- Power factor: > 0,95

PHYSICAL

- IP rating: IP65 for temporary outdoor use (*)
- Cooling: combination of heat pipe cooling system and low noise fan
- Suspension and fixing: any position with quick-lock omega brackets
- Pan / tilt lock: for transportation and maintenance
- Signal connection: Seetronic XLR 5p IN/OUT connectors
- Data connection: IP65 Seetronic RJ45 IN/OUT
- Power connection: Seetronic powerCON TRUE IP65 IN/OUT
- Dimensions (WxHxD): 449x705x297mm / 17.68"x27.76"x11.69"
- Weight: 34kg / 74.96lbs
- (*) NOTE: Suitable for permanent outdoor use, provided installation and maintenance cycles by qualified technicians are carried.

CERTIFICATIONS / APPROVALS

- Certifications / Approvals: CE

BOX CONTENT

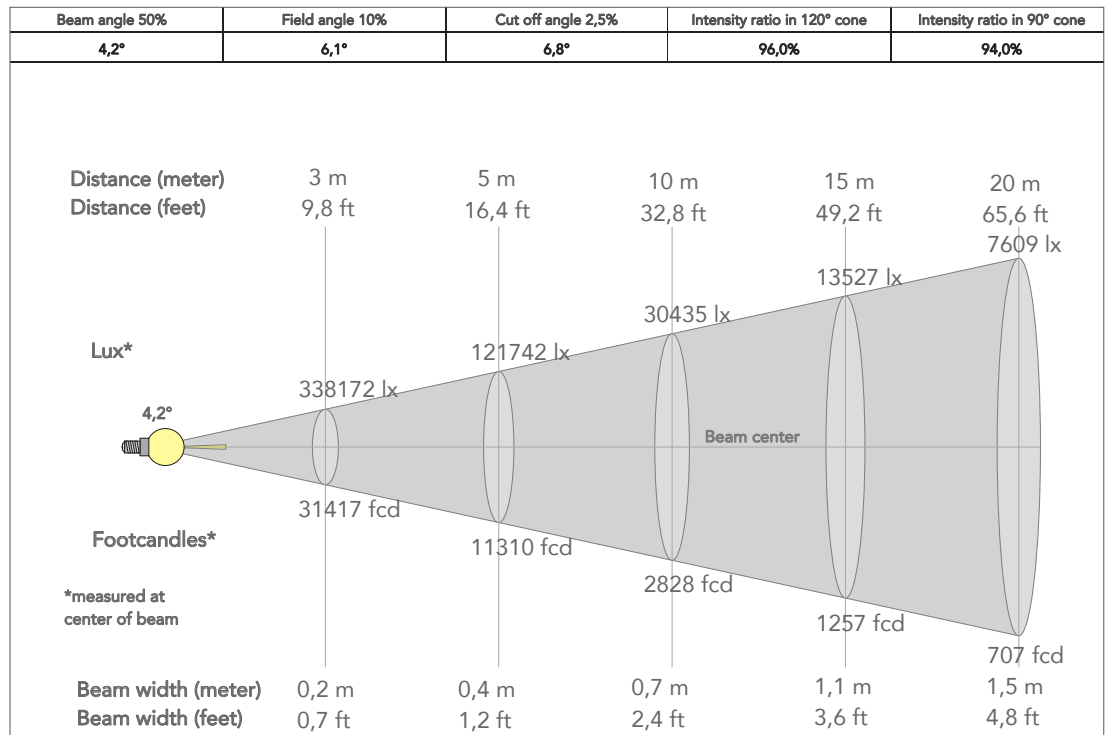
- 1 x ASTRAPROF500LTIP
- 2 x OSIPPLUS
- 1 x 1,5 meters 3G1,5mmq power cable (BARE END - SEETRONIC POWERCON TRUE1 IP65 power connector)
- User Manual

ACCESSORIES & RELATED PRODUCTS

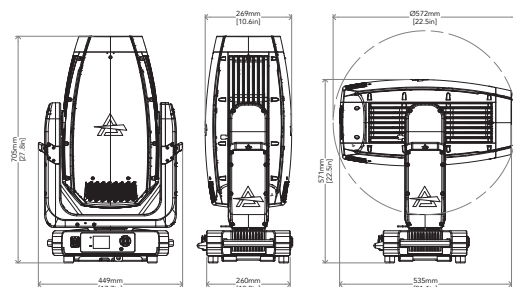
- FCLASTRAP500LTIP Flight case for 2 pcs of ASTRAPROFILE500LTIP
- AP500LTTRSKIT Camera assembly kit for tracking systems for ASTRAPROFILE500LTIP
- OSIPPLUS IP65 quick-lock omega bracket compatible with IP65 moving heads, M12 hole
- IPTESTBOX Portable vacuum and pressure tester for ProLights IP fixtures
- AETHERBOX IP65 1 universe CRMX transceiver, DMX and Ethernet protocols, Wi-Fi, Bluetooth and battery ready
- AETHERBOXONE IP65 1x universe CRMX transceiver, DMX, Ethernet protocols, Wi-Fi, Bluetooth, battery-ready and PO
- C6002B Slim aluminum clamp, 200kg loading, 48-51mm tubes, M10 bolt, Black
- RSR1235A Steel security cable for hanging bodies, inox steel shackle, L=120 cm, silver
- UPBOXPRO Firmware uploader kit, USB IN, 5-pin XLR DMX OUT connector

PRESET FULL ON

Beam angle 50%: 4,2°



TECHICAL DRAWINGS



CERTIFICATIONS / APPROVALS

Visit our website for specifications and tech documentations

