

# PHOTOMETRIC TEST REPORT



## **FIXTURE DATA**

---

**Manufacturer:** Clay Paky s.r.l.  
**Fixture model:** VOLERO TWINS  
**Date:** 2025-04-18

## TABLE OF CONTENTS:

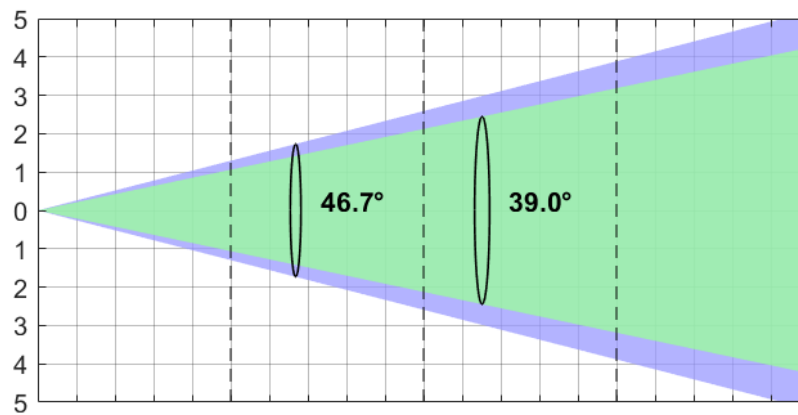
➔ FAN MODE: AUTO - ZOOM MAX	3
➔ FAN MODE: AUTO - ZOOM MIN	4
➔ FAN MODE: CONSTANT - ZOOM MAX	5
➔ FAN MODE: CONSTANT - ZOOM MIN	6
➔ FAN MODE: SILENT - ZOOM MAX	7
➔ FAN MODE: SILENT - ZOOM MIN	8
➔ FAN MODE: THEATRE - ZOOM MAX	9
➔ FAN MODE: THEATRE - ZOOM MIN	10
➔ GRAPHICAL STROBE: ZOOM MAX	11
➔ GRAPHICAL STROBE: ZOOM MIN	12
➔ TM-30: FULL COLOR	13
➔ TLCI-201: FULL COLOR	14
➔ TM-30: WHITE	15
➔ TLCI-2012: WHITE	16
➔ TM-30: CTO 4%	17
➔ TLCI-2012: CTO 4%	18
➔ TM-30: CTO 100%	19
➔ TLCI-2012: CTO 100%	20

## FAN MODE: AUTO - ZOOM MAX

### Maximum Zoom - Auto Fan mode (46.7° 10% - 39° 50%)

**Total Output: 8287 lumens**

	Lux (fc)	Lux (fc)	Lux (fc)	Lux (fc)
Full Colour	2139 (199)	535 (50)	238 (22)	134 (12)
White	1150 (107)	288 (27)	128 (12)	72 (7)
Red	500 (46)	125 (12)	56 (5)	31 (3)
Green	719 (67)	180 (17)	80 (7)	45 (4)
Blue	139 (13)	35 (3)	15 (1)	9 (1)
CTO 4%	2131 (198)	533 (49)	237 (22)	133 (12)
CTO 100%	964 (90)	241 (22)	107 (10)	60 (6)



Distance	m (ft in)	0	3 (9' 10")	6 (19' 8")	9 (29' 6")	12 (39' 4")
Diameter 10%	m (ft in)	0	2.59 (8' 6")	5.18 (17' 0")	7.78 (25' 6")	10.37 (34' 0")
Diameter 50%	m (ft in)	0	2.12 (6' 12")	4.25 (13' 11")	6.37 (20' 11")	8.50 (27' 11")

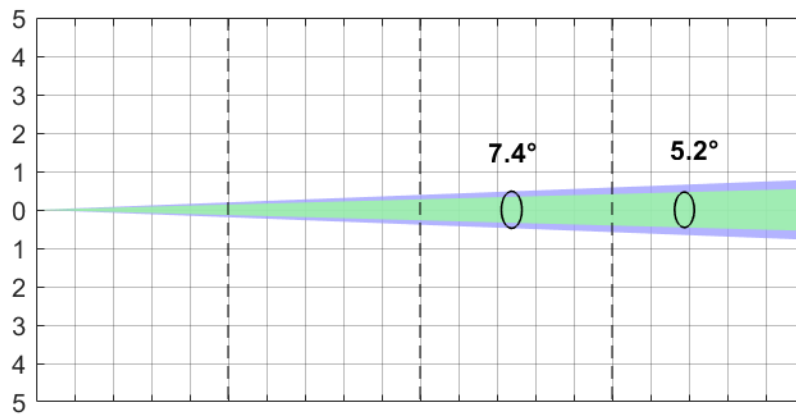
\*Lumen values detected with integrating sphere. Measurements taken 15 minutes after the fixture was turned on.

**FAN MODE: AUTO - ZOOM MIN**

**Minimum Zoom - Auto Fan mode (7.4° 10% - 5.2° 50%)**

**Total Output: 5619 lumens**

	Lux (fc)	Lux (fc)	Lux (fc)	Lux (fc)
Full Colour	104358 (9695)	26090 (2424)	11595 (1077)	6522 (606)
White	58619 (5446)	14655 (1361)	6513 (605)	3664 (340)
Red	26997 (2508)	6749 (627)	3000 (279)	1687 (157)
Green	33922 (3151)	8481 (788)	3769 (350)	2120 (197)
Blue	6706 (623)	1676 (156)	745 (69)	419 (39)
CTO 4%	104772 (9734)	26193 (2433)	11641 (1082)	6548 (608)
CTO 100%	43472 (4039)	10868 (1010)	4830 (449)	2717 (252)



Distance	m (ft in)	0	3 (9' 10")	6 (19' 8")	9 (29' 6")	12 (39' 4")
Diameter 10%	m (ft in)	0	0.39 (1' 3")	0.78 (2' 7")	1.17 (3' 10")	1.56 (5' 1")
Diameter 50%	m (ft in)	0	0.27 (0' 11")	0.54 (1' 9")	0.81 (2' 8")	1.08 (3' 7")

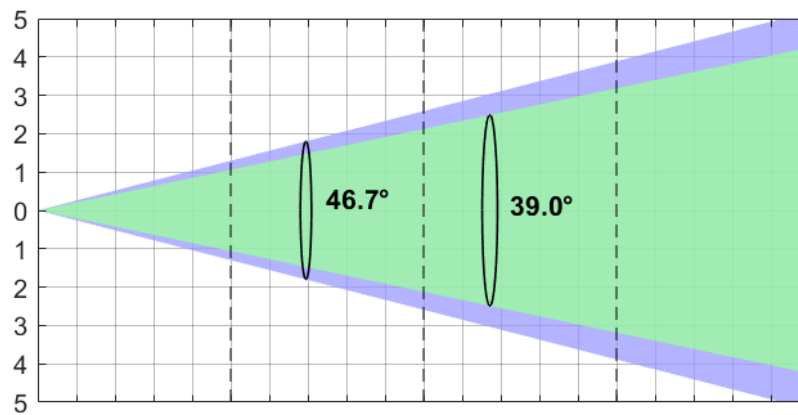
\*Lumen values detected with integrating sphere. Measurements taken 15 minutes after the fixture was turned on.

## FAN MODE: CONSTANT - ZOOM MAX

### Maximum Zoom - Constant Fan mode (46.7° 10% - 39° 50%)

**Total Output: 8424 lumens**

	Lux (fc)	Lux (fc)	Lux (fc)	Lux (fc)
Full Colour	2139 (199)	535 (50)	238 (22)	134 (12)
White	1158 (108)	290 (27)	129 (12)	72 (7)
Red	494 (46)	124 (11)	55 (5)	31 (3)
Green	725 (67)	181 (17)	81 (7)	45 (4)
Blue	139 (13)	35 (3)	15 (1)	9 (1)
CTO 4%	2117 (197)	529 (49)	235 (22)	132 (12)
CTO 100%	947 (88)	237 (22)	105 (10)	59 (5)



Distance	m (ft in)	0	3 (9' 10")	6 (19' 8")	9 (29' 6")	12 (39' 4")
Diameter 10%	m (ft in)	0	2.59 (8' 6")	5.18 (17' 0")	7.78 (25' 6")	10.37 (34' 0")
Diameter 50%	m (ft in)	0	2.12 (6' 12")	4.25 (13' 11")	6.37 (20' 11")	8.50 (27' 11")

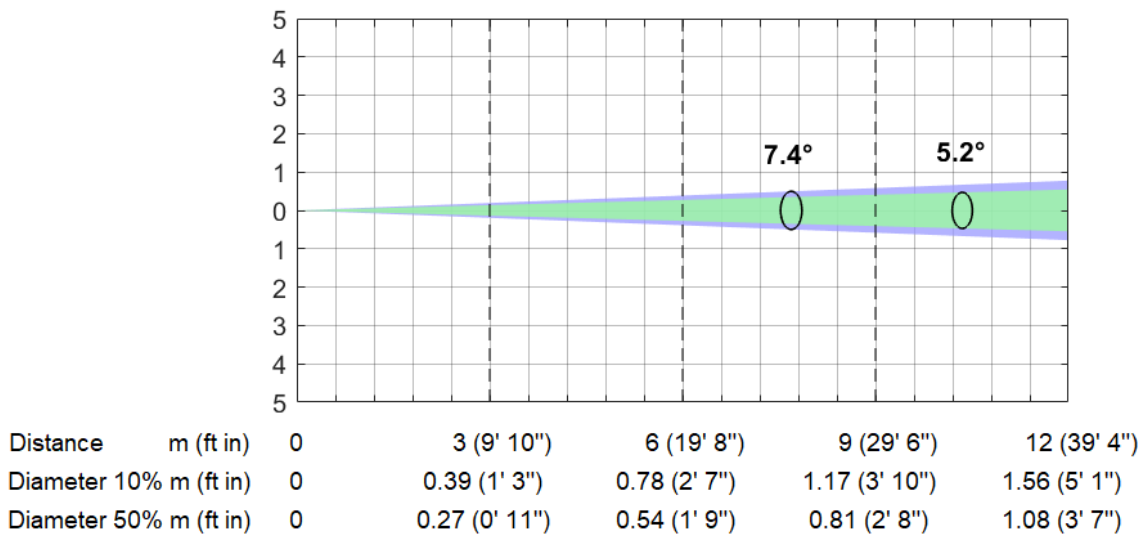
\*Lumen values detected with integrating sphere. Measurements taken 15 minutes after the fixture was turned on.

## FAN MODE: CONSTANT - ZOOM MIN

### Minimum Zoom - Constant Fan mode (7.4° 10% - 5.2° 50%)

**Total Output: 5865 lumens**

	Lux (fc)	Lux (fc)	Lux (fc)	Lux (fc)
Full Colour	109514 (10174)	27378 (2544)	12168 (1130)	6845 (636)
White	68617 (6375)	17154 (1594)	7624 (708)	4289 (398)
Red	27500 (2555)	6875 (639)	3056 (284)	1719 (160)
Green	33744 (3135)	8436 (784)	3749 (348)	2109 (196)
Blue	6497 (604)	1624 (151)	722 (67)	406 (38)
CTO 4%	104928 (9748)	26232 (2437)	11659 (1083)	6558 (609)
CTO 100%	43064 (4001)	10766 (1000)	4785 (445)	2691 (250)



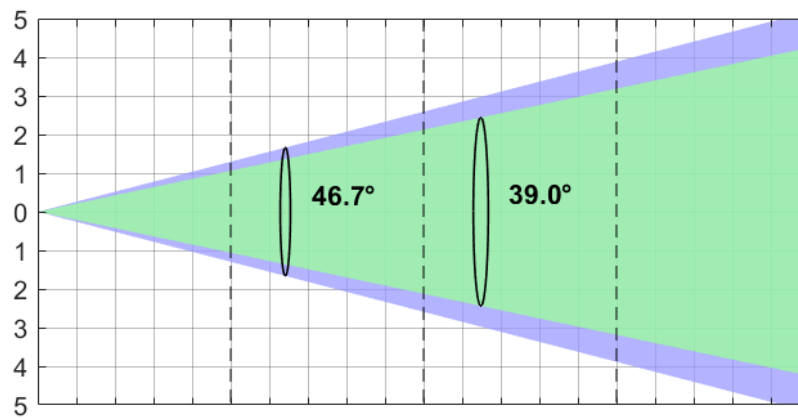
\*Lumen values detected with integrating sphere. Measurements taken 15 minutes after the fixture was turned on.

## FAN MODE: SILENT - ZOOM MAX

### Maximum Zoom - Silent Fan mode (46.7° 10% - 39° 50%)

**Total Output: 8384 lumens**

	Lux (fc)	Lux (fc)	Lux (fc)	Lux (fc)
Full Colour	2125 (197)	531 (49)	236 (22)	133 (12)
White	1153 (107)	288 (27)	128 (12)	72 (7)
Red	500 (46)	125 (12)	56 (5)	31 (3)
Green	717 (67)	179 (17)	80 (7)	45 (4)
Blue	139 (13)	35 (3)	15 (1)	9 (1)
CTO 4%	2139 (199)	535 (50)	238 (22)	134 (12)
CTO 100%	978 (91)	244 (23)	109 (10)	61 (6)



Distance	m (ft in)	0	3 (9' 10")	6 (19' 8")	9 (29' 6")	12 (39' 4")
Diameter 10%	m (ft in)	0	2.59 (8' 6")	5.18 (17' 0")	7.78 (25' 6")	10.37 (34' 0")
Diameter 50%	m (ft in)	0	2.12 (6' 12")	4.25 (13' 11")	6.37 (20' 11")	8.50 (27' 11")

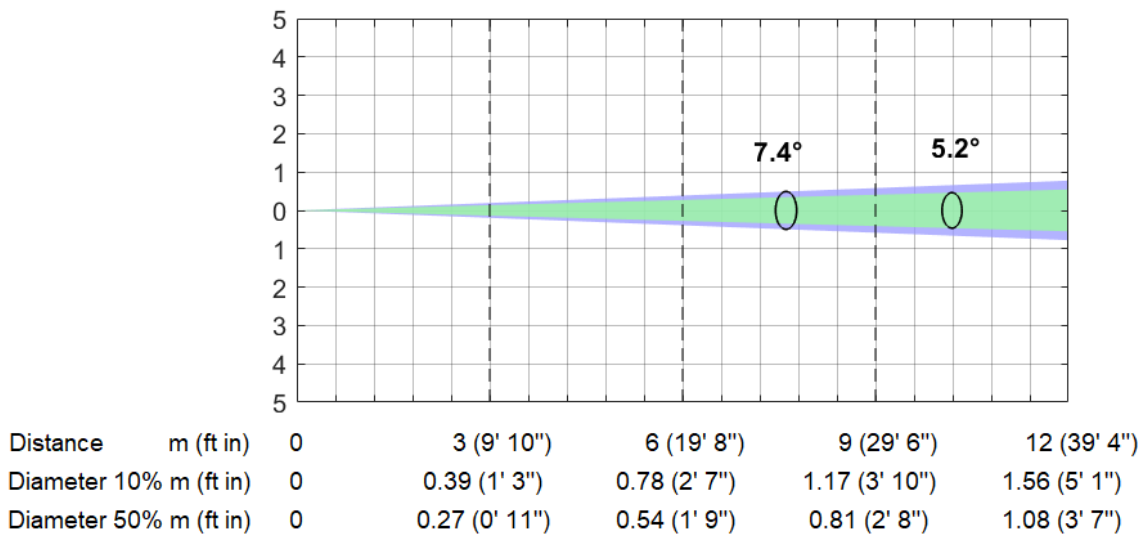
\*Lumen values detected with integrating sphere. Measurements taken 15 minutes after the fixture was turned on.

## FAN MODE: SILENT - ZOOM MIN

### Minimum Zoom - Silent Fan mode (7.4° 10% - 5.2° 50%)

**Total Output: 5610 lumens**

	Lux (fc)	Lux (fc)	Lux (fc)	Lux (fc)
Full Colour	105228 (9776)	26307 (2444)	11692 (1086)	6577 (611)
White	61561 (5719)	15390 (1430)	6840 (635)	3848 (357)
Red	25006 (2323)	6251 (581)	2778 (258)	1563 (145)
Green	33344 (3098)	8336 (774)	3705 (344)	2084 (194)
Blue	6131 (570)	1533 (142)	681 (63)	383 (36)
CTO 4%	94969 (8823)	23742 (2206)	10552 (980)	5936 (551)
CTO 100%	45256 (4204)	11314 (1051)	5028 (467)	2828 (263)



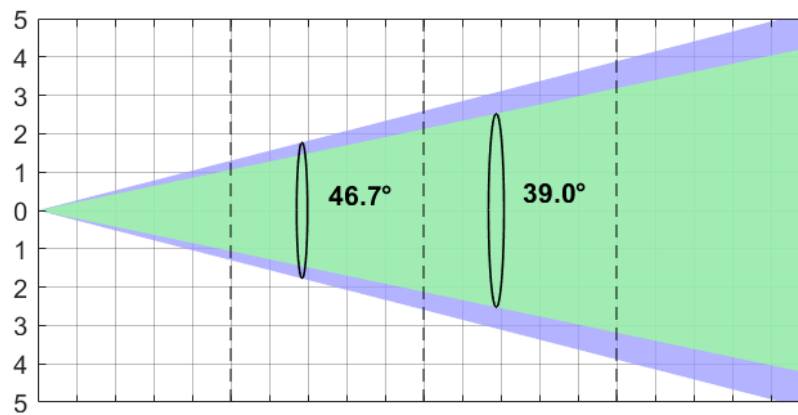
\*Lumen values detected with integrating sphere. Measurements taken 15 minutes after the fixture was turned on.

## FAN MODE: THEATRE - ZOOM MAX

### Maximum Zoom - Theatre Fan mode (46.7° 10% - 39° 50%)

**Total Output: 5179 lumens**

	Lux (fc)	Lux (fc)	Lux (fc)	Lux (fc)
Full Colour	1319 (123)	330 (31)	147 (14)	82 (8)
White	672 (62)	168 (16)	75 (7)	42 (4)
Red	311 (29)	78 (7)	35 (3)	19 (2)
Green	425 (39)	106 (10)	47 (4)	27 (2)
Blue	78 (7)	19 (2)	9 (1)	5 (0)
CTO 4%	1303 (121)	326 (30)	145 (13)	81 (8)
CTO 100%	603 (56)	151 (14)	67 (6)	38 (3)



Distance	m (ft in)	0	3 (9' 10")	6 (19' 8")	9 (29' 6")	12 (39' 4")
Diameter 10%	m (ft in)	0	2.59 (8' 6")	5.18 (17' 0")	7.78 (25' 6")	10.37 (34' 0")
Diameter 50%	m (ft in)	0	2.12 (6' 12")	4.25 (13' 11")	6.37 (20' 11")	8.50 (27' 11")

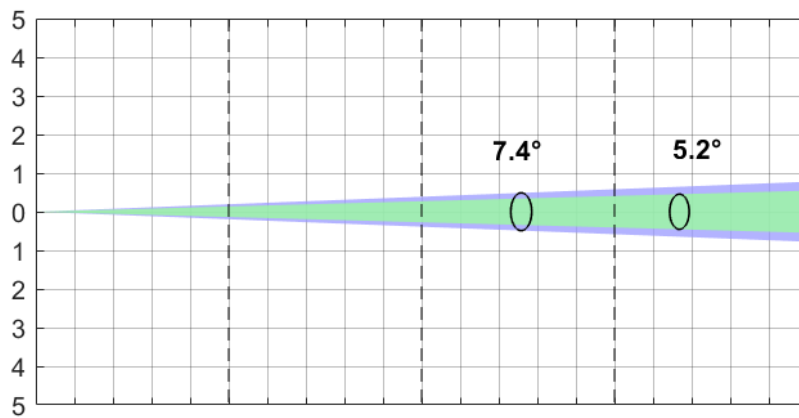
\*Lumen values detected with integrating sphere. Measurements taken 15 minutes after the fixture was turned on.

## FAN MODE: THEATRE - ZOOM MIN

### Minimum Zoom - Theatre Fan mode (7.4° 10% - 5.2° 50%)

**Total Output: 3443 lumens**

	Lux (fc)	Lux (fc)	Lux (fc)	Lux (fc)
Full Colour	64886 (6028)	16222 (1507)	7210 (670)	4055 (377)
White	34811 (3234)	8703 (809)	3868 (359)	2176 (202)
Red	16239 (1509)	4060 (377)	1804 (168)	1015 (94)
Green	20139 (1871)	5035 (468)	2238 (208)	1259 (117)
Blue	3472 (323)	868 (81)	386 (36)	217 (20)
CTO 4%	60189 (5592)	15047 (1398)	6688 (621)	3762 (349)
CTO 100%	27319 (2538)	6830 (635)	3035 (282)	1707 (159)



Distance	m (ft in)	0	3 (9' 10")	6 (19' 8")	9 (29' 6")	12 (39' 4")
Diameter 10%	m (ft in)	0	0.39 (1' 3")	0.78 (2' 7")	1.17 (3' 10")	1.56 (5' 1")
Diameter 50%	m (ft in)	0	0.27 (0' 11")	0.54 (1' 9")	0.81 (2' 8")	1.08 (3' 7")

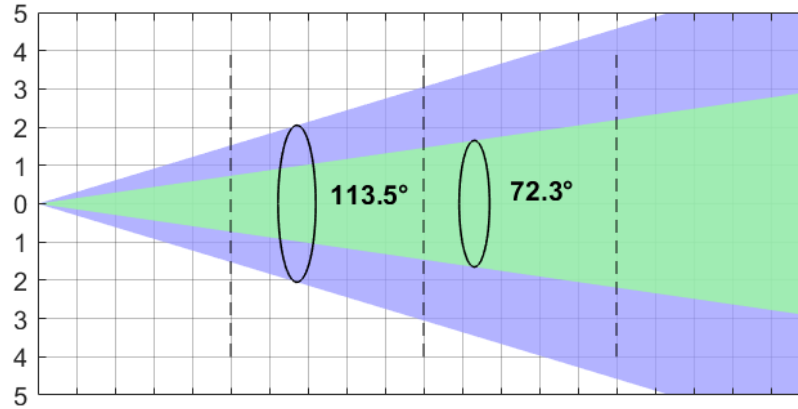
\*Lumen values detected with integrating sphere. Measurements taken 15 minutes after the fixture was turned on.

## GRAPHICAL STROBE: ZOOM MAX

### Graphical Strobe - Zoom MAX (113.5° 10% - 72.3° 50%)

**Total Output: 16935 lumens**

Graphical Strobe	Lux (fc)	Lux (fc)	Lux (fc)	Lux (fc)
	4375 (406)	1094 (102)	486 (45)	273 (25)



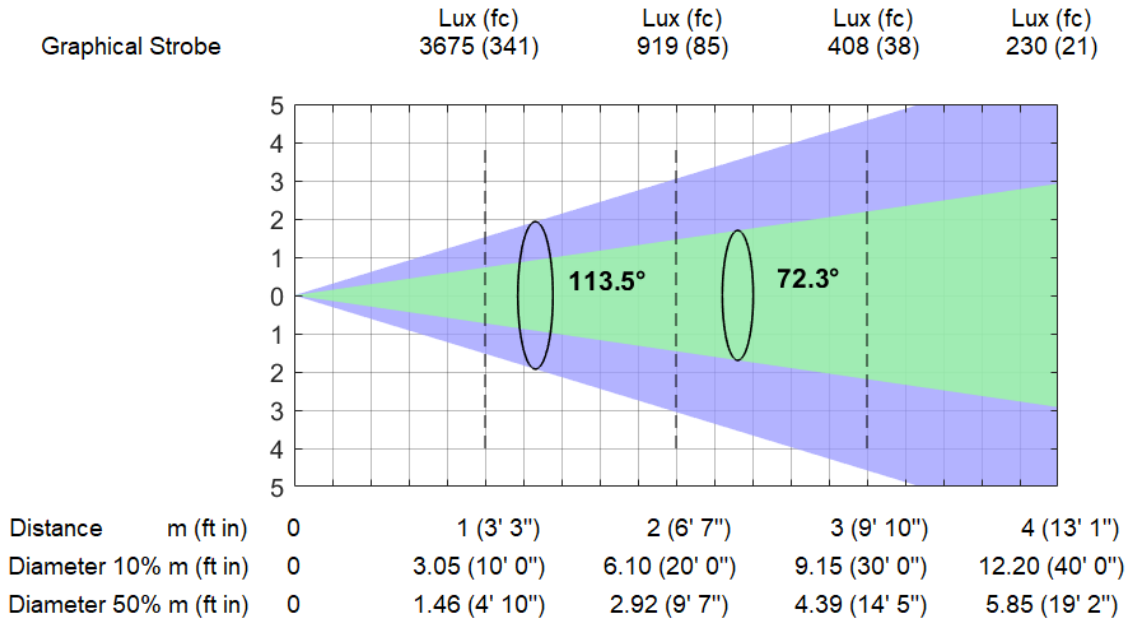
Distance	m (ft in)	0	1 (3' 3")	2 (6' 7")	3 (9' 10")	4 (13' 1")
Diameter 10%	m (ft in)	0	3.05 (10' 0")	6.10 (20' 0")	9.15 (30' 0")	12.20 (40' 0")
Diameter 50%	m (ft in)	0	1.46 (4' 10")	2.92 (9' 7")	4.39 (14' 5")	5.85 (19' 2")

\*Lumen values detected with integrating sphere. Measurements taken 15 minutes after the fixture was turned on.

## GRAPHICAL STROBE: ZOOM MIN

### Graphical Strobe - Zoom MIN (113.5° 10% - 72.3° 50%)

**Total Output: 13985 lumens**



\*Lumen values detected with integrating sphere. Measurements taken 15 minutes after the fixture was turned on.

# TM-30: FULL COLOR

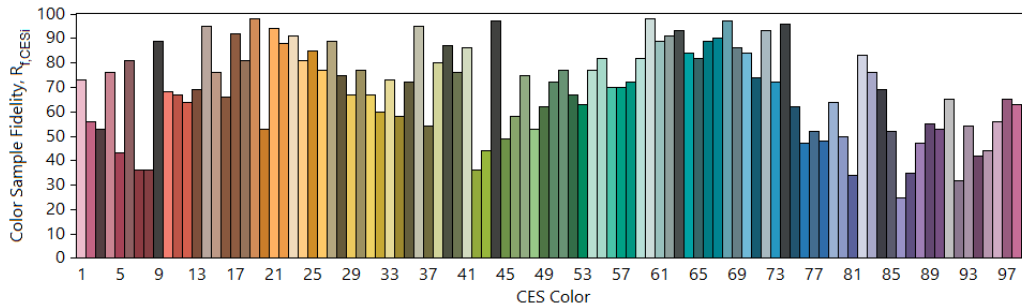
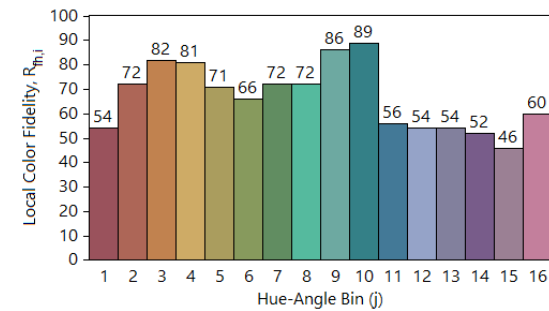
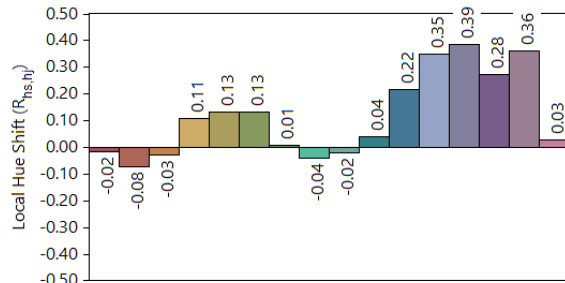
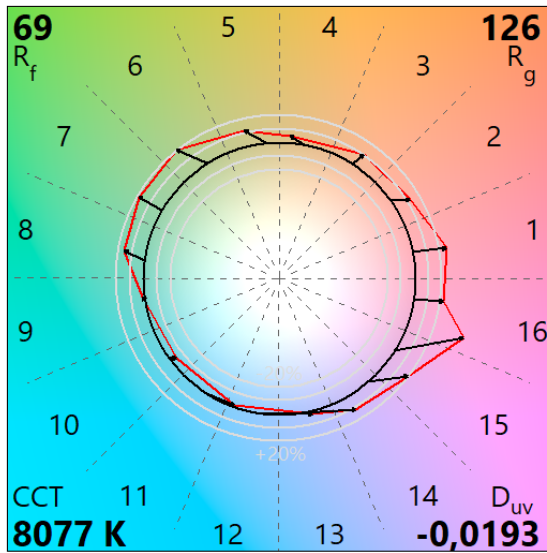
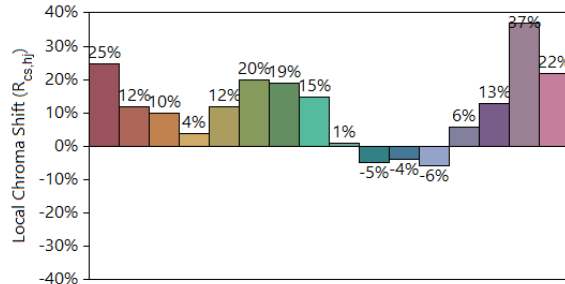
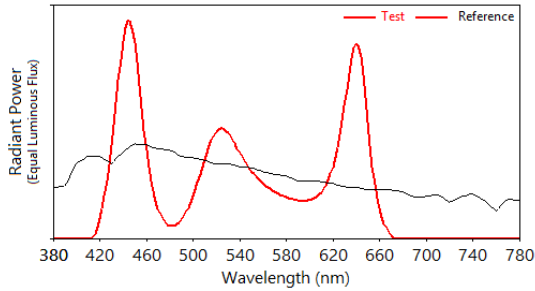
## IES TM-30-18 Color Rendition Report

Source: VOLERO TWINS

Manufacturer: CLAY PAKY

Date: 26.02.2025

Model: VOLERO TWINS



Notes: Full Colour

x 0,3029  
y 0,2787  
u' 0,2111  
v' 0,4371

CIE 13.3-1995  
(CRI)  
R<sub>a</sub> 58  
R<sub>g</sub> -116

Colors are for visual orientation purposes only.

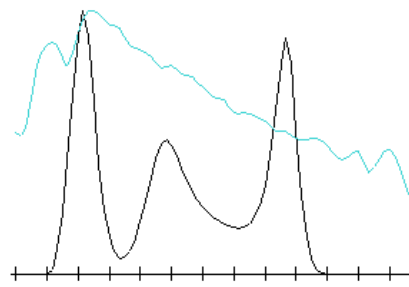
# TLCI-201: FULL COLOR

Direct spectrum input : CCT = D8077 (-4.1)

TLCI-2012 : 48 (D8077)



Sector	Lightness	Chroma	Hue
R	-----	----	0
R/Y	0	-	0
Y	0	-	0
Y/G	0	---	--
G	0	----	-
G/C	0	----	+++++
C	0	--	++++
C/B	0	0	+++++
B	0	--	-
B/M	0	--	0
M	--	---	--
M/R	-----	----	--



# TM-30: WHITE

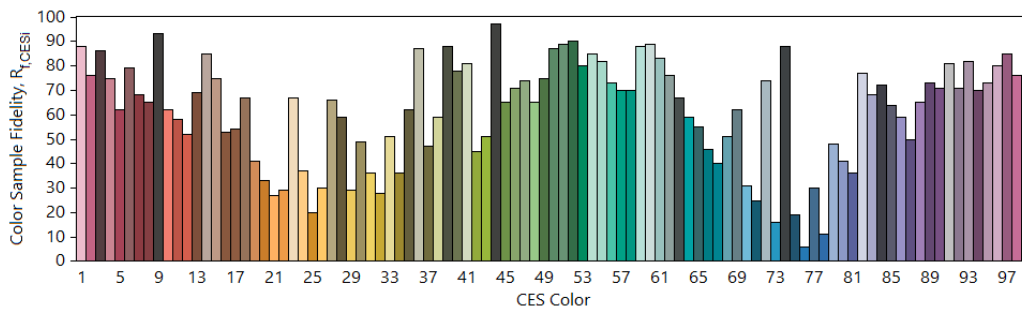
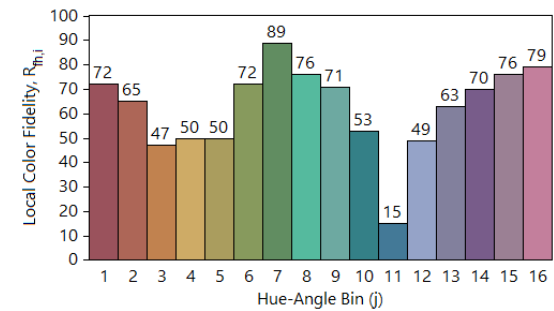
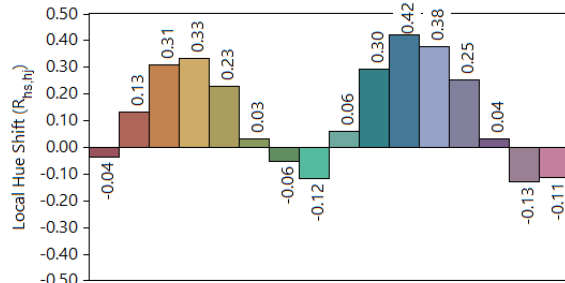
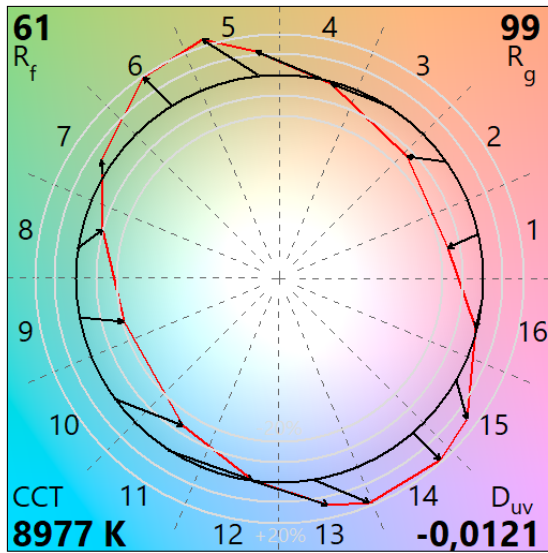
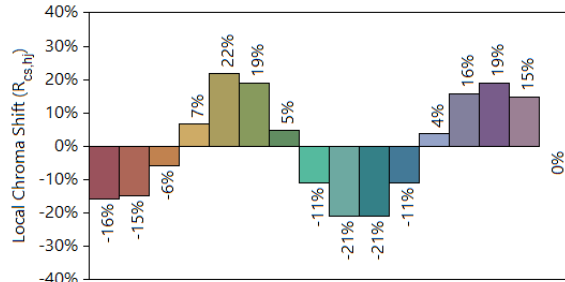
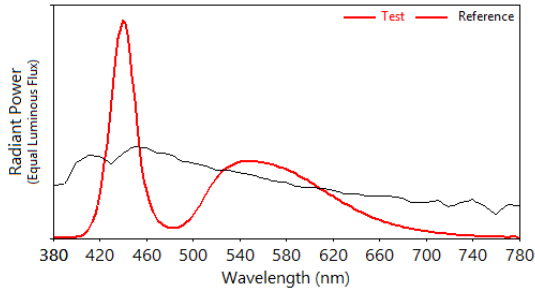
## IES TM-30-18 Color Rendition Report

Source: VOLERO TWINS

Manufacturer: CLAY PAKY

Date: 26.02.2025

Model: VOLERO TWINS



Notes: WHITE

x 0,2934  
y 0,2809  
u' 0,2029  
v' 0,4371

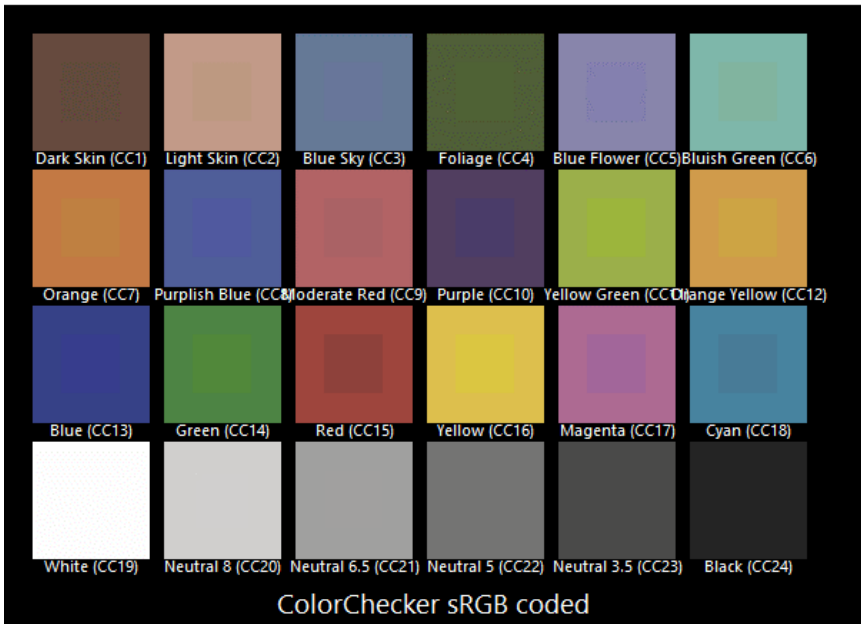
CIE 13.3-1995  
(CRI)  
R<sub>a</sub> 68  
R<sub>g</sub> 4

Colors are for visual orientation purposes only.

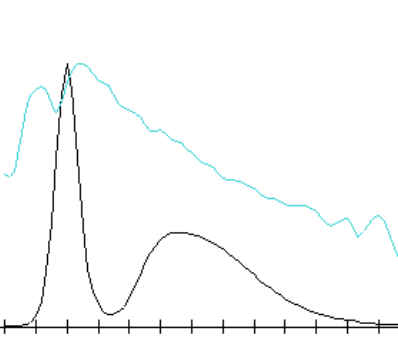
# TLCI-2012: WHITE

Direct spectrum input : CCT = D8977 (-2.8)

TLCI-2012 : 40 (D8977)



Sector	Lightness	Chroma	Hue
R	++++	++	+
R/Y	0	0	-----
Y	-	---	-----
Y/G	-	---	0
G	-	---	++++
G/C	+	0	++++++
C	++++	0	+
C/B	+++++	+	---
B	+	---	-----
B/M	++	---	++
M	++++	-	++++++
M/R	++++	0	+++++



# TM-30: CTO 4%

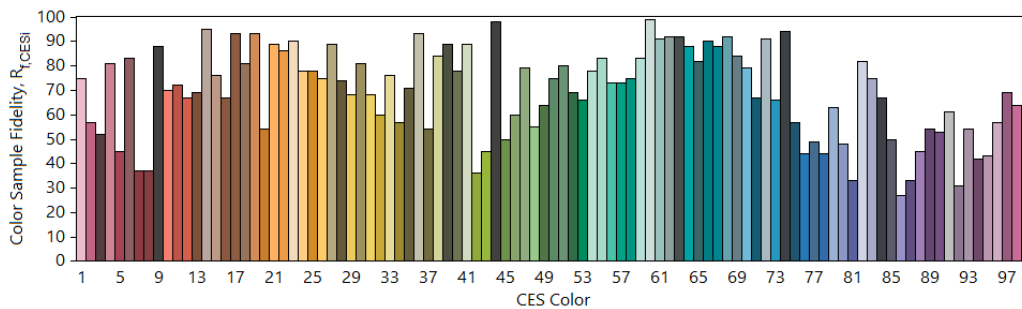
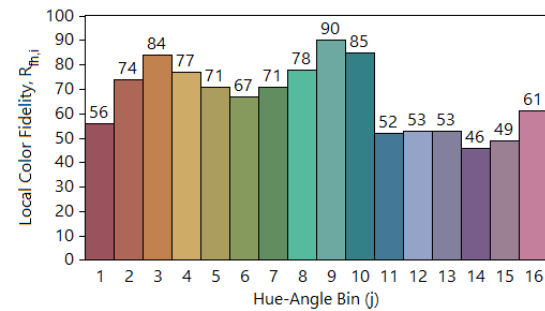
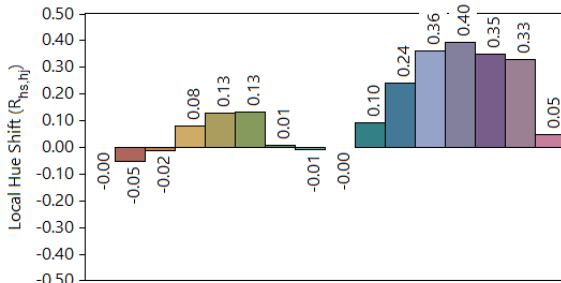
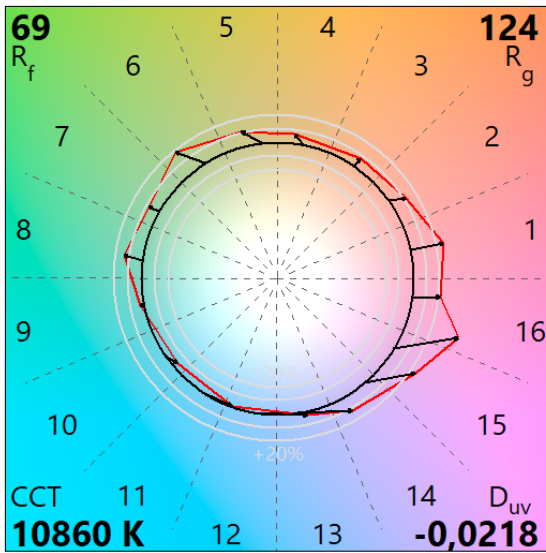
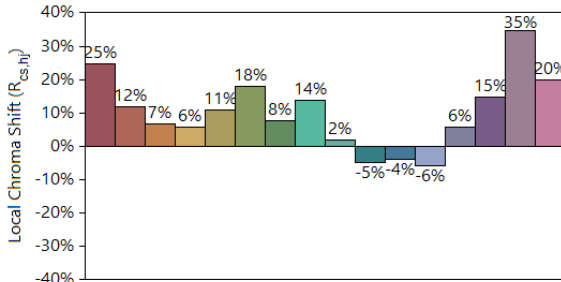
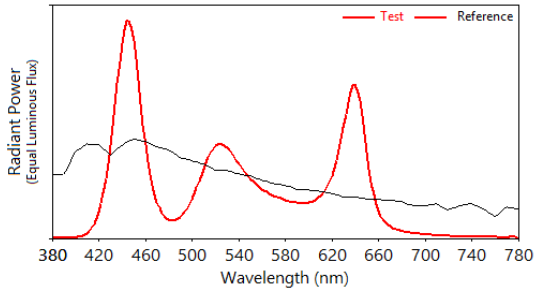
## IES TM-30-18 Color Rendition Report

Source: VOLERO TWINS

Manufacturer: CLAY PAKY

Date: 26.02.2025

Model: VOLERO TWINS



Notes: CTO 4%

x 0,2897  
y 0,2603  
u' 0,2090  
v' 0,4226

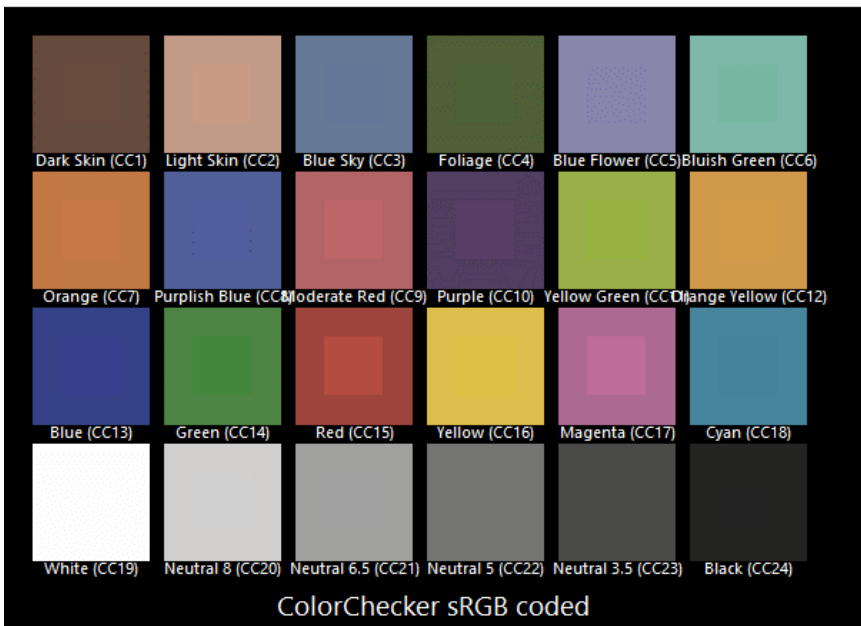
CIE 13.3-1995  
(CRI)  
R<sub>a</sub> 59  
R<sub>g</sub> -114

Colors are for visual orientation purposes only.

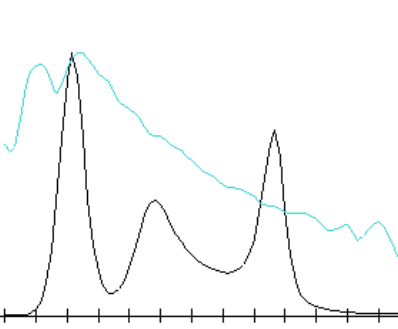
# TLCI-2012: CTO 4%

Direct spectrum input : CCT = D10860 (-4.6)

TLCI-2012 : 52 (D10860)



Sector	Lightness	Chroma	Hue
R	-----	---	0
R/Y	0	-	0
Y	0	-	-
Y/G	0	---	-
G	0	---	-
G/C	+	---	++++
C	+	-	+++
C/B	+	0	+++
B	0	-	-
B/M	0	-	0
M	-	---	-
M/R	-----	---	-



# TM-30: CTO 100%

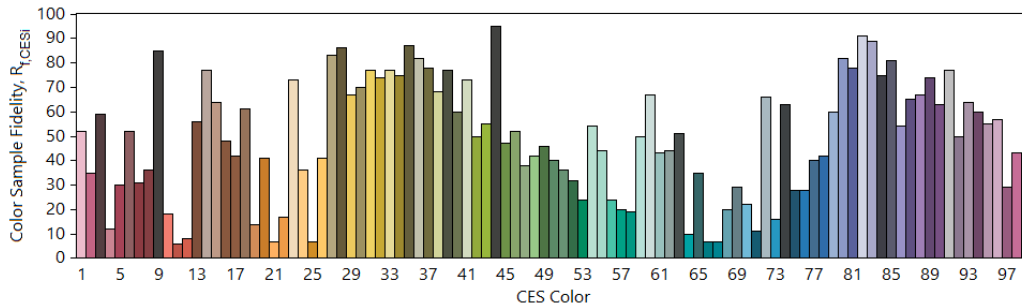
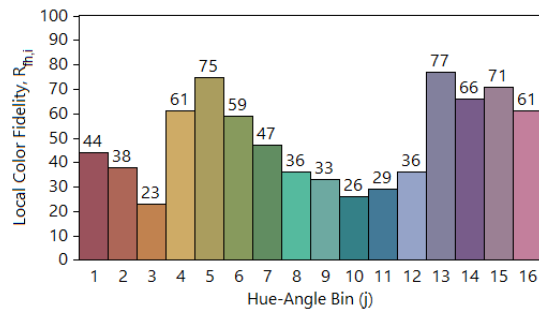
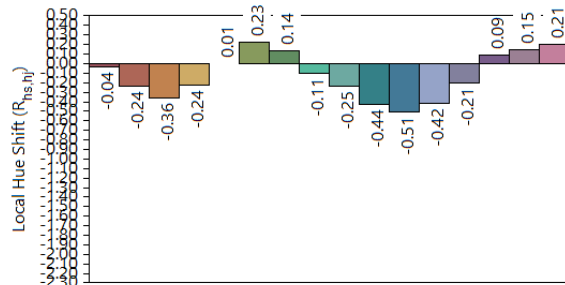
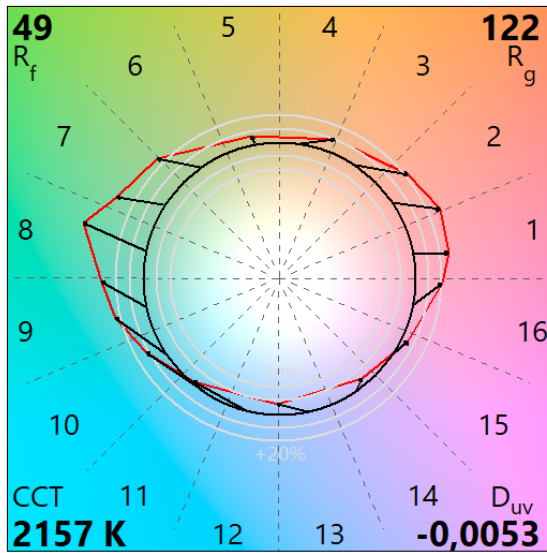
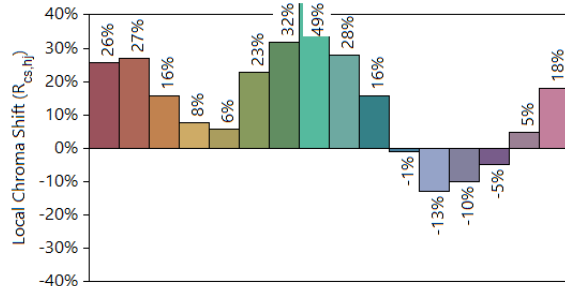
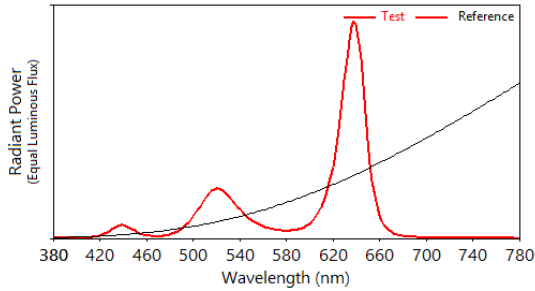
## IES TM-30-18 Color Rendition Report

Source: VOLERO TWINS

Manufacturer: CLAY PAKY

Date: 26.02.2025

Model: VOLERO TWINS



Notes: CTO 100%

x 0,4987  
y 0,3989  
u' 0,2938  
v' 0,5288

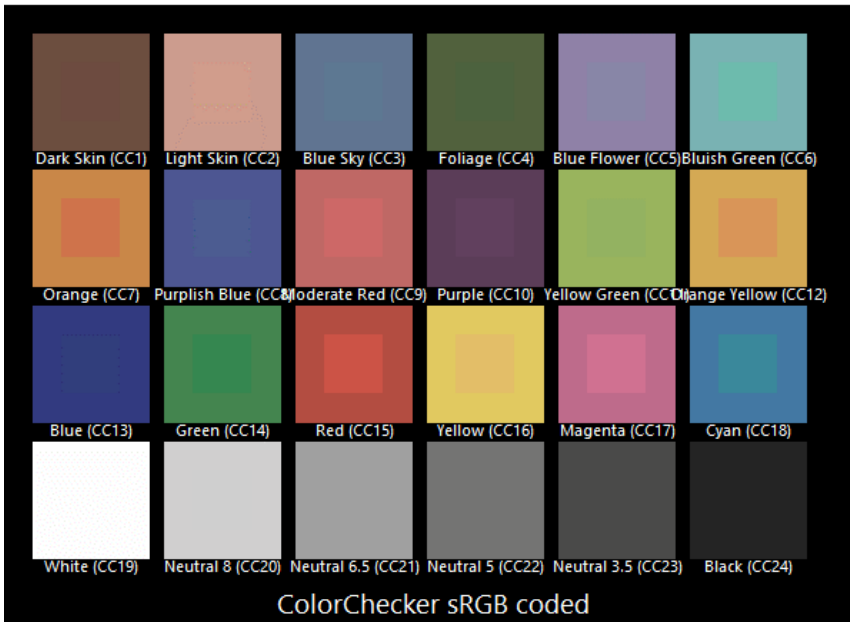
CIE 13.3-1995  
(CRI)  
R<sub>a</sub> 19  
R<sub>g</sub> -111

Colors are for visual orientation purposes only.

# TLCI-2012: CTO 100%

Direct spectrum input : CCT = P2157 (-1.0)

TLCI-2012 : 12 (P2157)



Sector	Lightness	Chroma	Hue
R	--	--	+++
R/Y	+++++	++	+++++
Y	+++	++	+++++
Y/G	+	+	--
G	0	-	---
G/C	0	--	---
C	--	-----	+++++
C/B	-----	+	+++++
B	-	+++	++++
B/M	-	+++	+++++
M	--	--	0
M/R	--	--	+

