

# PHOTOMETRIC TEST REPORT



## **FIXTURE DATA**

---

**Manufacturer:** Clay Paky s.r.l.

**Fixture model:** SKYLOS

**Date:** 2023-03-23

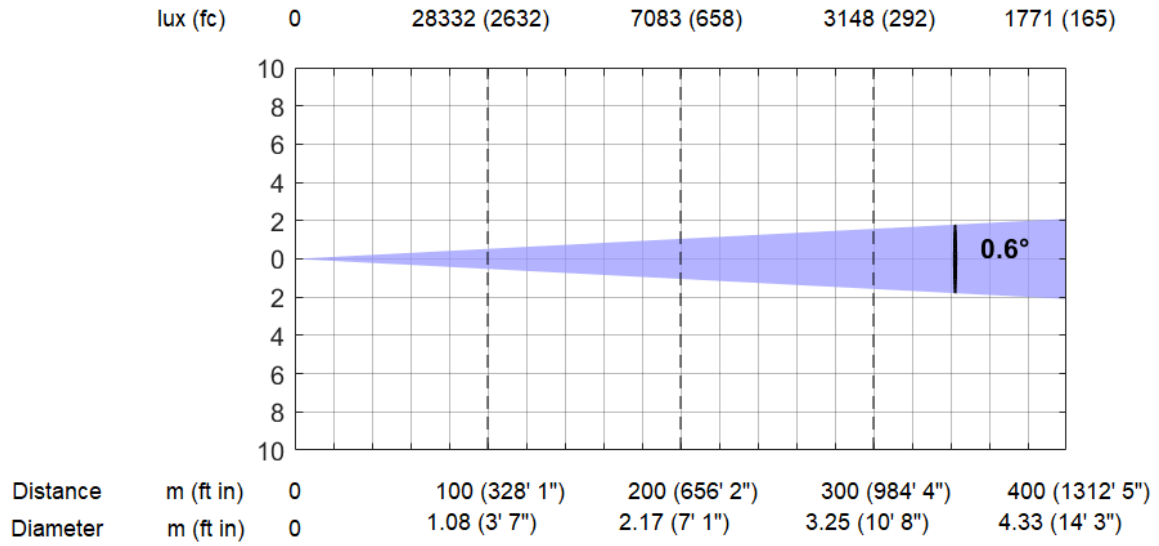
## TABLE OF CONTENTS:

➔ BEAM MODE	3
➔ BEAM MODE WITH FROST	4
➔ TM-30: 8000K	5
➔ TLCI-2012: 8000K	6

## BEAM MODE

### Beam Mode (0.6°)

**Total Output: 9346 lumens**

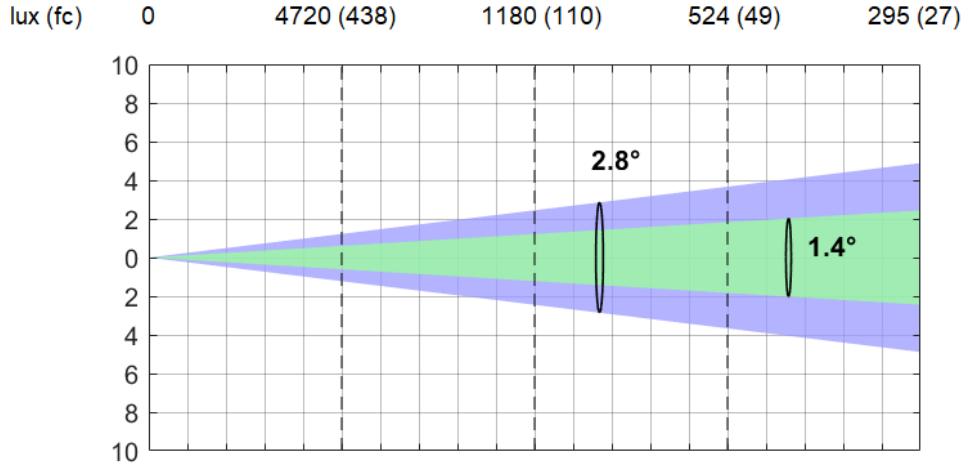


\*Lumen values detected with integrating sphere. Measurements taken 15 minutes after the fixture was turned on.

# BEAM MODE WITH FROST

## Beam Mode with Frost (2.8° 10% - 1.4° 50%)

Total Output: 8469 lumens



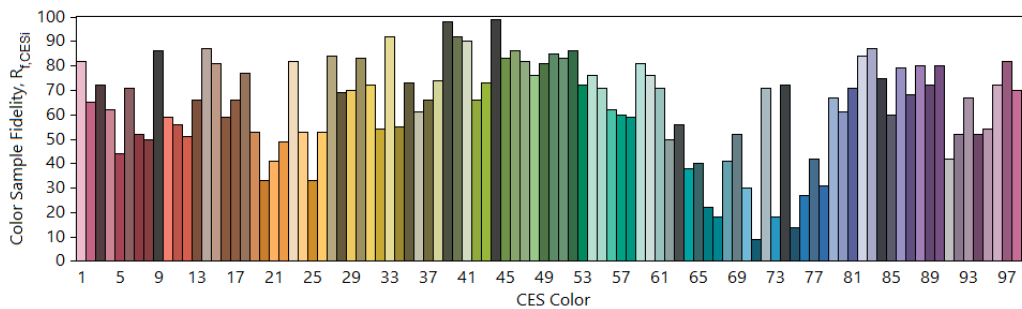
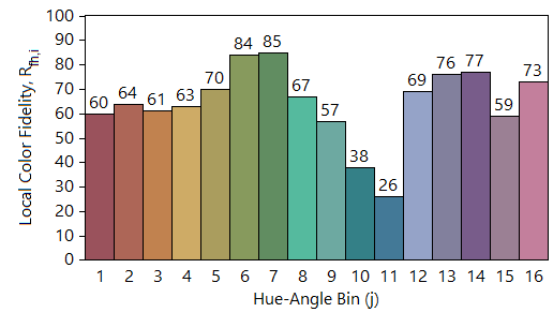
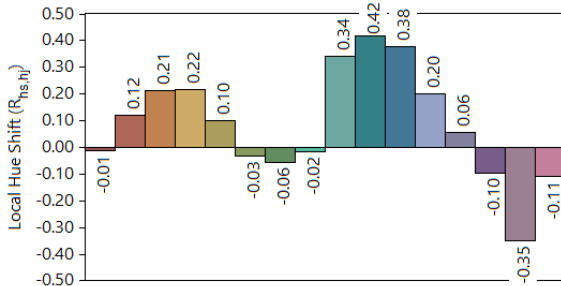
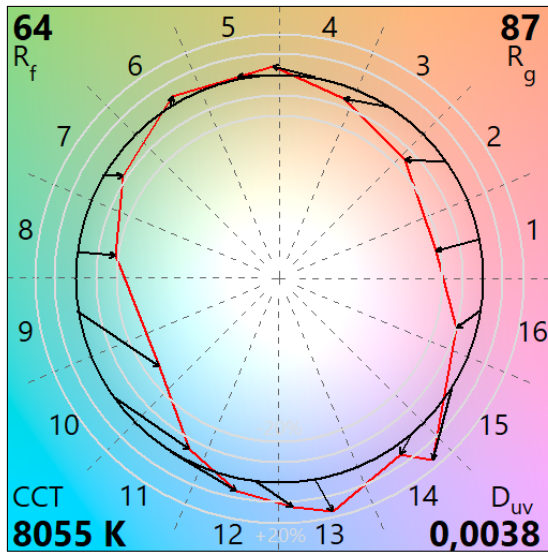
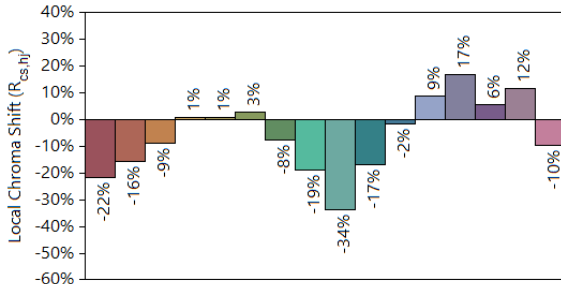
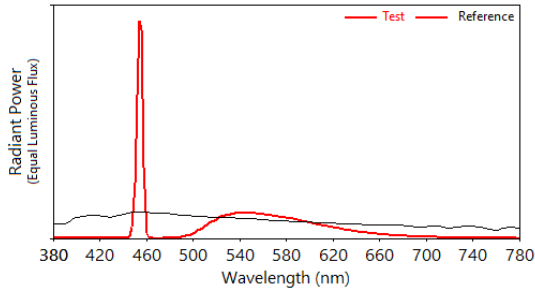
lux (fc)	0	4720 (438)	1180 (110)	524 (49)	295 (27)	
Distance	m (ft in)	0	50 (164' 1")	100 (328' 1")	150 (492' 2")	200 (656' 2")
Diameter 10%	m (ft in)	0	2.45 (8' 0")	4.90 (16' 1")	7.35 (24' 1")	9.80 (32' 2")
Diameter 50%	m (ft in)	0	1.25 (4' 1")	2.50 (8' 2")	3.75 (12' 4")	5.00 (16' 5")

\*Lumen values detected with integrating sphere. Measurements taken 15 minutes after the fixture was turned on.

# TM-30: 8000K

## IES TM-30-18 Color Rendition Report

Source: SKYLOS      Manufacturer: CLAY PAKY  
 Date: 04.12.2024      Model: SKYLOS



Notes:

x 0,2929  
 y 0,3096  
 u' 0,1912  
 v' 0,4546

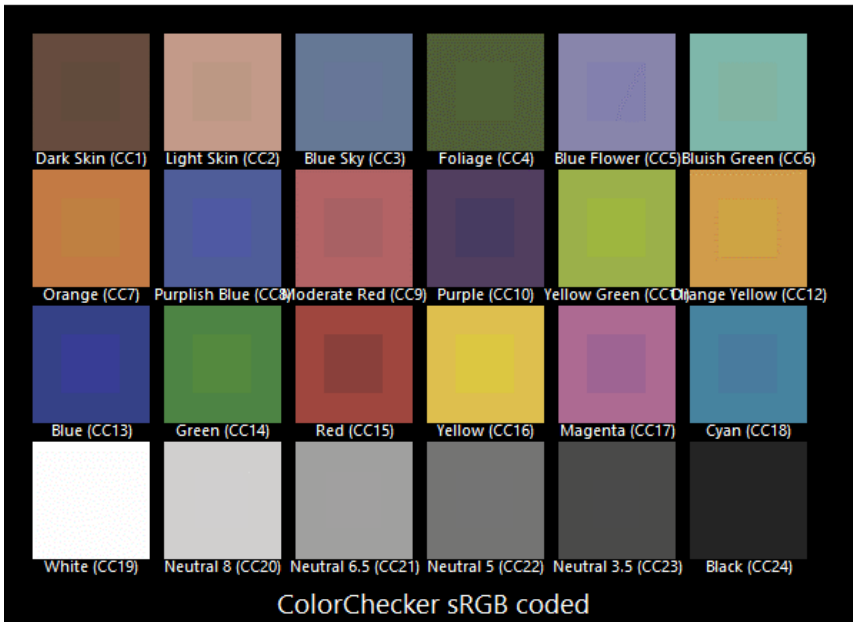
CIE 13.3-1995  
 (CRI)  
 R<sub>a</sub> 67  
 R<sub>g</sub> -45

Colors are for visual orientation purposes only.

# TLCI-2012: 8000K

Direct spectrum input : CCT = D8055 (+0.1)

TLCI-2012 : 38 (D8055)



Sector	Lightness	Chroma	Hue
R	+++++	+++	+
R/Y	0	0	-----
Y	--	---	-----
Y/G	--	---	0
G	---	--	++++
G/C	+	+	++++
C	+++	0	-
C/B	++++	0	-----
B	0	----	----
B/M	+++	---	++
M	++++	-	++++
M/R	+++++	0	+++++

