

PHOTOMETRIC TEST REPORT



FIXTURE DATA

Manufacturer: Clay Paky s.r.l.

Fixture model: RHAPSODYA

Date: 2024-06-07

TABLE OF CONTENTS:

➔	PHOTOMETRIC DATA: MINIMUM ZOOM	4
➔	PHOTOMETRIC DATA: MAXIMUM ZOOM	5
➔	TM-30: MAX CRI - 2500K	6
➔	TLCI-201: MAX CRI - 2500K	7
➔	TM-30: MAX FLUX - 2500K	8
➔	TLCI-2012: MAX FLUX - 2500K	9
➔	TM-30: MAX CRI - 3200K	10
➔	TLCI-2012: MAX CRI - 3200K	11
➔	TM-30: MAX FLUX - 3200K	12
➔	TLCI-2012: MAX FLUX - 3200K	13
➔	TM-30: MAX CRI - 4000K	14
➔	TLCI-2012: MAX CRI - 4000K	15
➔	TM-30: MAX FLUX - 4000K	16
➔	TLCI-2012: MAX FLUX - 4000K	17
➔	TM-30: MAX CRI - 4400K	18
➔	TLCI-2012: MAX CRI - 4400K	19
➔	TM-30: MAX FLUX - 4400K	20
➔	TLCI-2012: MAX FLUX - 4400K	21
➔	TM-30: MAX CRI - 5000K	22
➔	TLCI-2012: MAX CRI - 5000K	23
➔	TM-30: MAX FLUX - 5000K	24
➔	TLCI-2012: MAX FLUX - 5000K	25
➔	TM-30: MAX CRI - 5600K	26
➔	TLCI-2012: MAX CRI - 5600K	27
➔	TM-30: MAX FLUX - 5600K	28

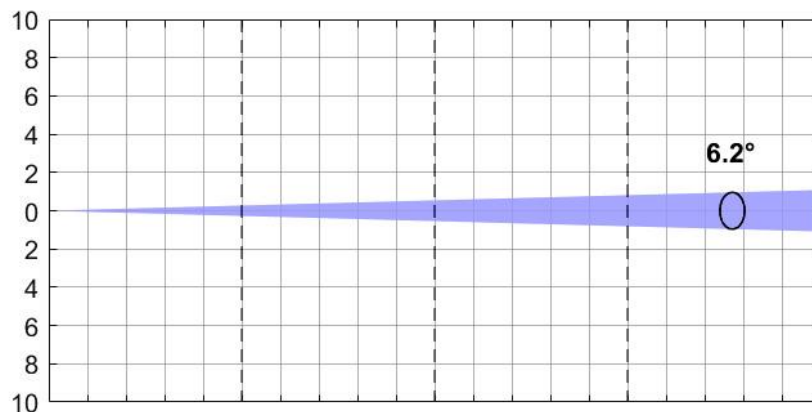
⇒ TLCI-2012: MAX FLUX - 5600K	29
⇒ TM-30: MAX CRI - 6000K	30
⇒ TLCI-2012: MAX CRI - 6000K	31
⇒ TM-30: MAX FLUX - 6000K	32
⇒ TLCI-2012: MAX FLUX - 6000K	33
⇒ TM-30: MAX CRI - 6500K	34
⇒ TLCI-2012: MAX CRI - 6500K	35
⇒ TM-30: MAX FLUX - 6500K	36
⇒ TLCI-2012: MAX FLUX - 6500K	37
⇒ TM-30: MAX CRI - 7000K	38
⇒ TLCI-2012: MAX CRI - 7000K	39
⇒ TM-30: MAX FLUX - 7000K	40
⇒ TLCI-2012: MAX FLUX - 7000K	41
⇒ TM-30: MAX CRI - 7500K	42
⇒ TLCI-2012: MAX CRI - 7500K	43
⇒ TM-30: MAX FLUX - 7500K	44
⇒ TLCI-2012: MAX FLUX - 7500K	45
⇒ TM-30: MAX CRI - 8000K	46
⇒ TLCI-2012: MAX CRI - 8000K	47
⇒ TM-30: MAX FLUX - 8000K	48
⇒ TLCI-2012: MAX FLUX - 8000K	49

PHOTOMETRIC DATA: MINIMUM ZOOM

RHAPSODYA TA 23,5°C	MINIMUM ZOOM			Color Temperature [K]	Color Rendering Index	TLCI	TM30		CQS
	6,2°						CCT	CRI	
	Illuminance [lx] Distance: 5 m Diam: 0.54 m	Illuminance [lx] Distance: 10 m Diam.: 1.08 m	Total Lumen Output [lm]						
RHAPSODYA - 2500K - max CRI	26.932	6.733	7.260	2.506	94	74	91	105	93
RHAPSODYA - 3200K - max CRI	31.996	7.999	8.679	3.207	94	82	92	106	94
RHAPSODYA - 4000K - max CRI	36.308	9.077	9.813	3.912	93	83	90	106	92
RHAPSODYA - 4400K - max CRI	37.156	9.289	10.130	4.342	93	83	90	106	92
RHAPSODYA - 5000K - max CRI	38.416	9.604	10.466	4.950	92	84	89	106	92
RHAPSODYA - 5600K - max CRI	38.480	9.620	10.447	5.550	91	85	89	105	91
RHAPSODYA - 6000K - max CRI	38.372	9.593	10.433	5.924	91	86	89	105	91
RHAPSODYA - 6500K - max CRI	40.092	10.023	10.874	6.484	91	87	89	105	91
RHAPSODYA - 7000K - max CRI	41.372	10.343	11.264	6.928	91	88	88	105	91
RHAPSODYA - 7500K - max CRI	42.008	10.502	11.366	7.434	91	88	88	105	91
RHAPSODYA - 8000K - max CRI	41.288	10.322	11.253	7.969	91	88	88	104	91
RHAPSODYA - 10000K - max CRI	38.764	9.691	10.557	9.928	91	86	88	105	92
RHAPSODYA - 2500K - max FLUX	37.332	9.333	10.059	2.509	82	71	88	110	89
RHAPSODYA - 3200K - max FLUX	45.204	11.301	12.263	3.207	84	81	89	111	91
RHAPSODYA - 4000K - max FLUX	50.620	12.655	13.820	3.934	85	81	88	110	91
RHAPSODYA - 4400K - max FLUX	55.172	13.793	15.020	4.377	85	85	87	110	91
RHAPSODYA - 5000K - max FLUX	55.516	13.879	15.109	4.957	86	85	87	109	90
RHAPSODYA - 5600K - max FLUX	54.636	13.659	14.896	5.563	85	85	86	108	89
RHAPSODYA - 6000K - max FLUX	56.312	14.078	15.311	5.969	85	85	86	108	89
RHAPSODYA - 6500K - max FLUX	57.960	14.490	15.651	6.462	84	84	85	108	89
RHAPSODYA - 7000K - max FLUX	59.132	14.783	16.140	6.966	84	83	85	108	89
RHAPSODYA - 7500K - max FLUX	61.336	15.334	16.807	7.453	84	82	85	108	89
RHAPSODYA - 8000K - max FLUX	62.276	15.569	16.983	7.972	84	82	85	108	89
RHAPSODYA - 10000K - max FLUX	64.956	16.239	17.720	9.957	84	79	84	107	89

*Lumen values detected with integrating sphere. Measurements taken 15 minutes after the fixture was turned on.

Minimum Zoom (6.2°)



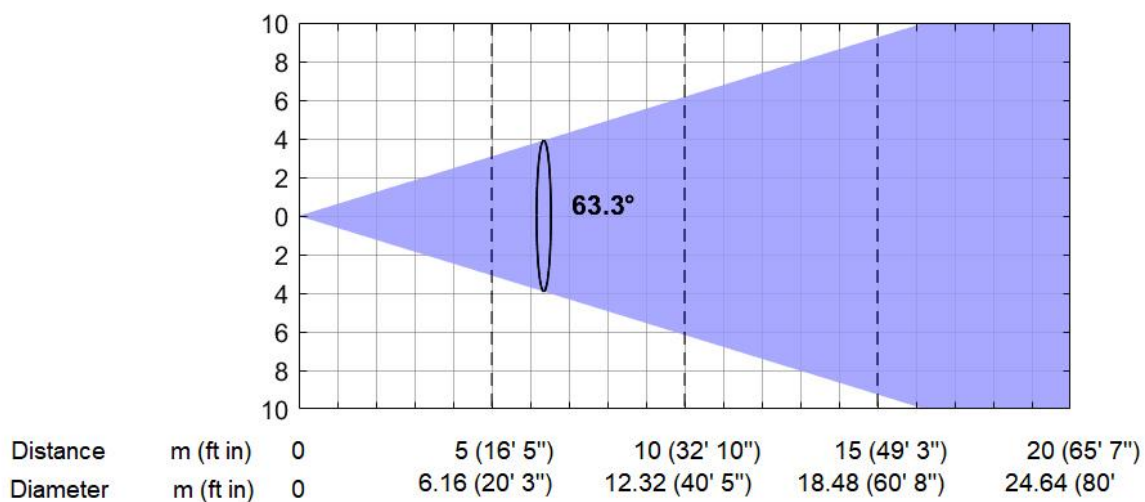
Distance	m (ft in)	0	5 (16' 5")	10 (32' 10")	15 (49' 3")	20 (65' 7")
Diameter	m (ft in)	0	0.54 (1' 9")	1.08 (3' 7")	1.62 (5' 4")	2.16 (7' 1")

PHOTOMETRIC DATA: MAXIMUM ZOOM

RHAPSODYA TA 23,5°C	MAXIMUM ZOOM			Color Temperature [K]	Color Rendering Index	TLCI	TM30		CQS
	63,3°						CCT	CRI	
	Illuminance [lx] Distance: 5 m Diam.: 6.16 m	Illuminance [lx] Distance: 10 m Diam.: 12.32 m	Total Lumen Output [lm]						
RHAPSODYA - 2500K - max CRI	444	111	9.734	2.506	94	74	91	105	93
RHAPSODYA - 3200K - max CRI	528	132	11.675	3.207	94	82	92	106	94
RHAPSODYA - 4000K - max CRI	589	147	12.947	3.912	93	83	90	106	92
RHAPSODYA - 4400K - max CRI	613	153	13.689	4.342	93	83	90	106	92
RHAPSODYA - 5000K - max CRI	632	158	14.052	4.950	92	84	89	106	92
RHAPSODYA - 5600K - max CRI	632	158	14.103	5.550	91	85	89	105	91
RHAPSODYA - 6000K - max CRI	643	161	14.261	5.924	91	86	89	105	91
RHAPSODYA - 6500K - max CRI	664	166	14.727	6.484	91	87	89	105	91
RHAPSODYA - 7000K - max CRI	682	171	15.176	6.928	91	88	88	105	91
RHAPSODYA - 7500K - max CRI	688	172	15.409	7.434	91	88	88	105	91
RHAPSODYA - 8000K - max CRI	672	168	14.955	7.969	91	88	88	104	91
RHAPSODYA - 10000K - max CRI	635	159	14.323	9.928	91	86	88	105	92
RHAPSODYA - 2500K - max FLUX	564	141	12.734	2.509	82	71	88	110	89
RHAPSODYA - 3200K - max FLUX	724	181	15.994	3.207	84	81	89	111	91
RHAPSODYA - 4000K - max FLUX	822	206	18.377	3.934	85	81	88	110	91
RHAPSODYA - 4400K - max FLUX	887	222	19.934	4.377	85	85	87	110	91
RHAPSODYA - 5000K - max FLUX	901	225	20.287	4.957	86	85	87	109	90
RHAPSODYA - 5600K - max FLUX	895	224	20.200	5.563	85	85	86	108	89
RHAPSODYA - 6000K - max FLUX	904	226	20.919	5.969	85	85	86	108	89
RHAPSODYA - 6500K - max FLUX	933	233	21.136	6.462	84	84	85	108	89
RHAPSODYA - 7000K - max FLUX	964	241	21.865	6.966	84	83	85	108	89
RHAPSODYA - 7500K - max FLUX	993	248	22.642	7.453	84	82	85	108	89
RHAPSODYA - 8000K - max FLUX	1.009	252	23.091	7.972	84	82	85	108	89
RHAPSODYA - 10000K - max FLUX	1.051	263	24.060	9.957	84	79	84	107	89

*Lumen values detected with integrating sphere. Measurements taken 15 minutes after the fixture was turned on.

Maximum Zoom (63.3°)



TM-30: MAX CRI - 2500K

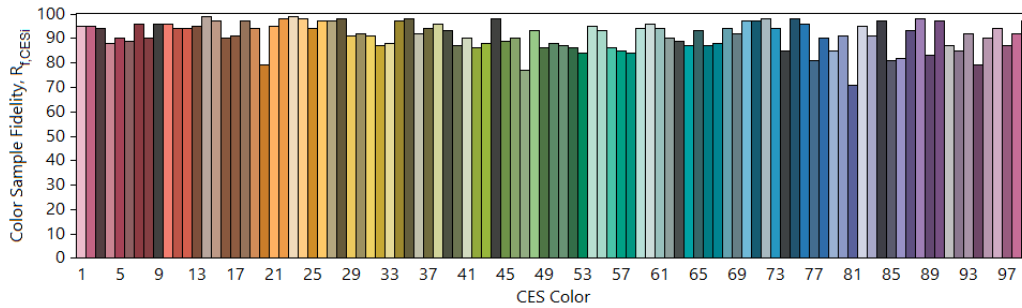
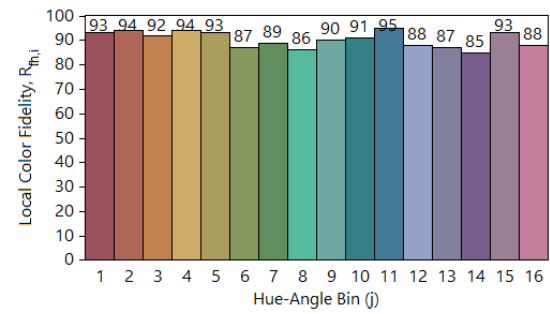
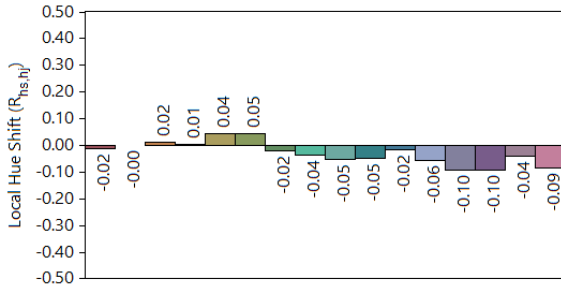
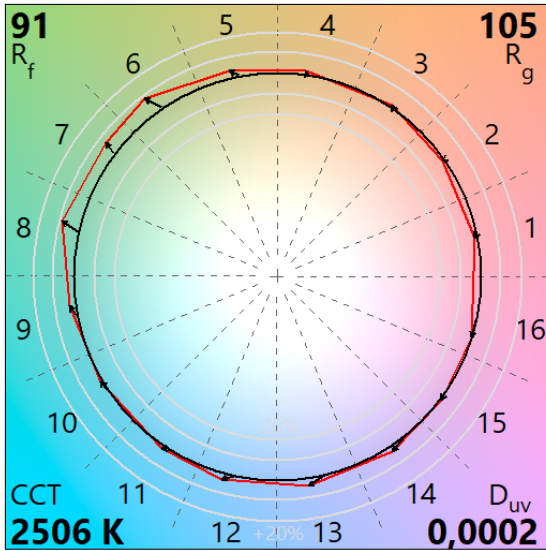
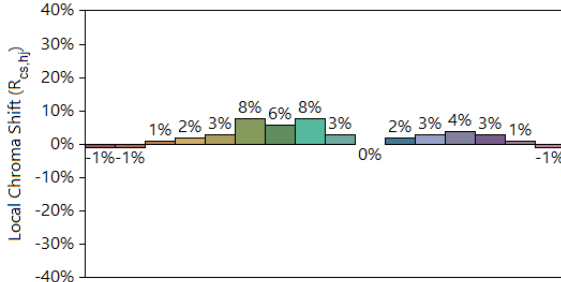
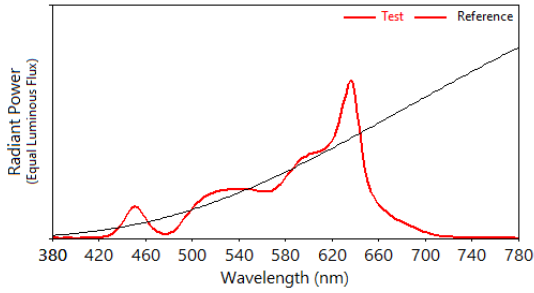
IES TM-30-18 Color Rendition Report

Source: Max CRI - 2500 K

Manufacturer: CLAY PAKY

Date: 01/12/2023

Model: RHAPSODYA



Notes:

x 0,4768
y 0,4141
u' 0,2719
v' 0,5312

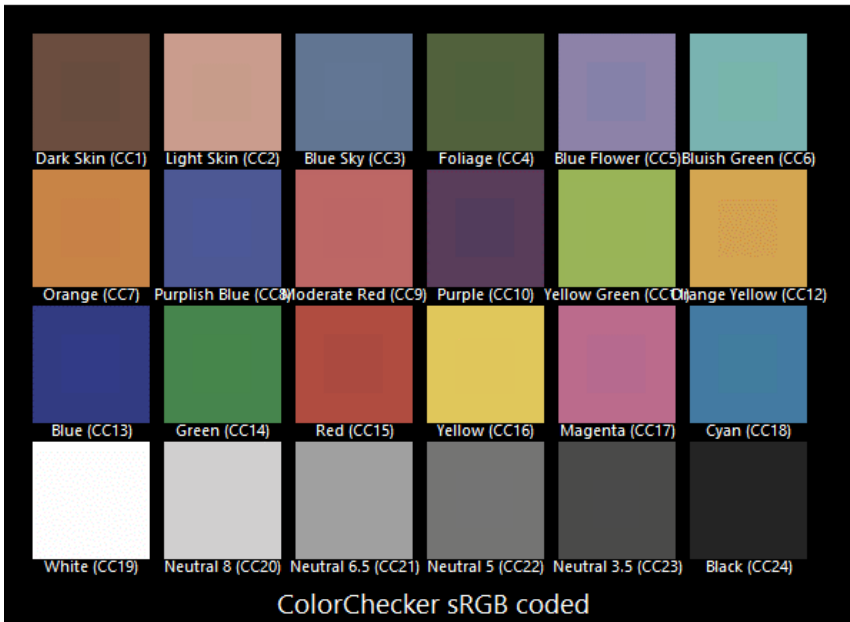
CIE 13.3-1995
(CRI)
Ra 94
Rg 83

Colors are for visual orientation purposes only.

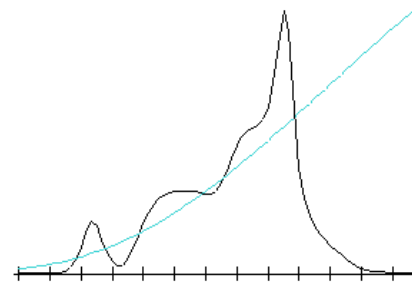
TLCI-201: MAX CRI - 2500K

Direct spectrum input : CCT = P2506 (0.0)

TLCI-2012 : 74 (P2506)



Sector	Lightness	Chroma	Hue
R	+	0	0
R/Y	+	0	0
Y	0	0	0
Y/G	0	0	0
G	0	0	0
G/C	0	-	++
C	0	--	+++++
C/B	-	+	+++++
B	0	-	0
B/M	+	0	+++++
M	+	0	+++++
M/R	+	0	+++



TM-30: MAX FLUX - 2500K

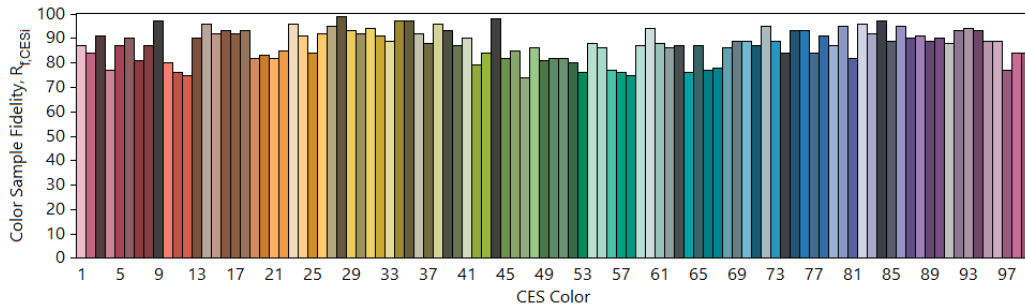
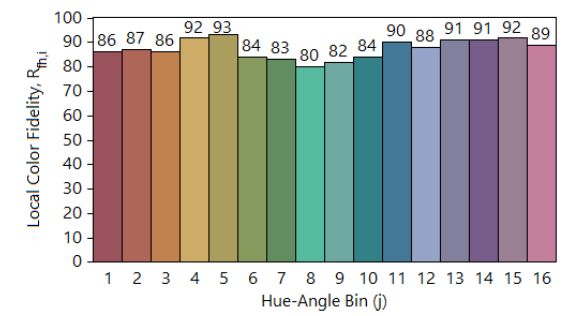
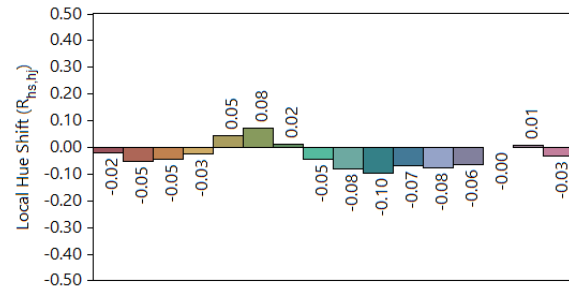
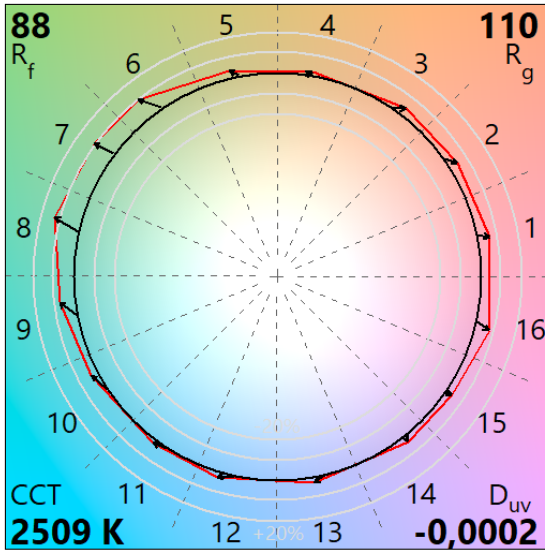
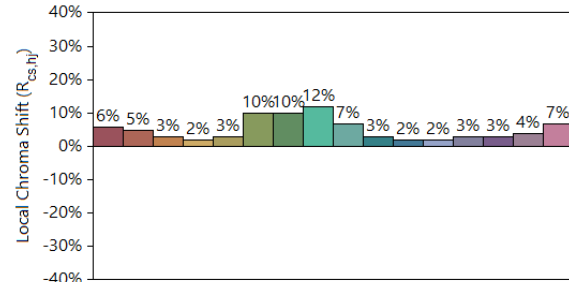
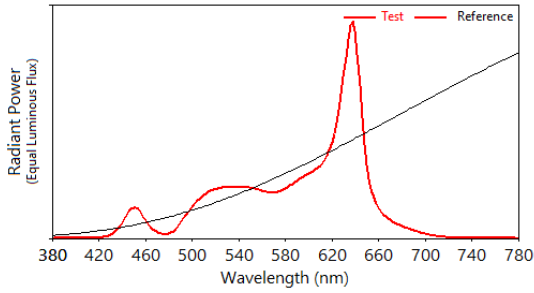
IES TM-30-18 Color Rendition Report

Source: Max FLUX - 2500 K

Manufacturer: CLAY PAKY

Date: 01/12/2023

Model: RHAPSODYA



Notes:

x 0,4759
y 0,4130
u' 0,2718
v' 0,5307

CIE 13.3-1995

(CRI)

R_a 82

R_g 52

Colors are for visual orientation purposes only.

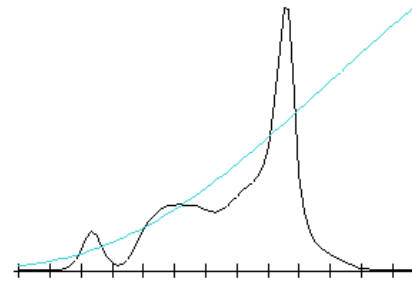
TLCI-2012: MAX FLUX - 2500K

Direct spectrum input : CCT = P2509 (0.0)

TLCI-2012 : 71 (P2509)



Sector	Lightness	Chroma	Hue
R	0	0	0
R/Y	+	0	+++
Y	0	0	+
Y/G	0	0	0
G	0	0	-
G/C	0	--	++
C	0	---	+++++
C/B	-	+	++++++
B	0	0	0
B/M	+	0	+++++
M	0	-	++
M/R	0	0	0



TM-30: MAX CRI - 3200K

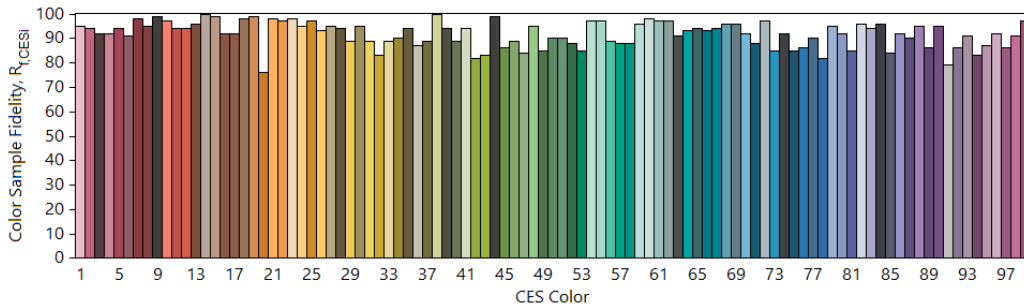
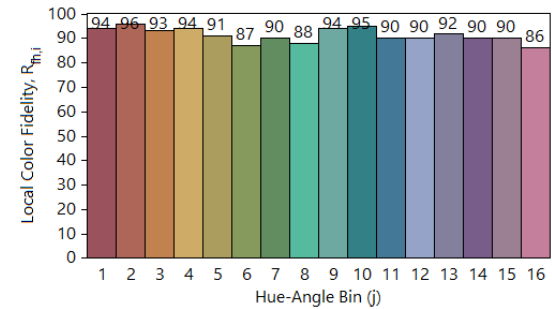
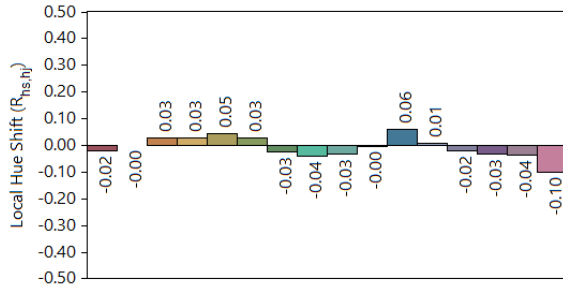
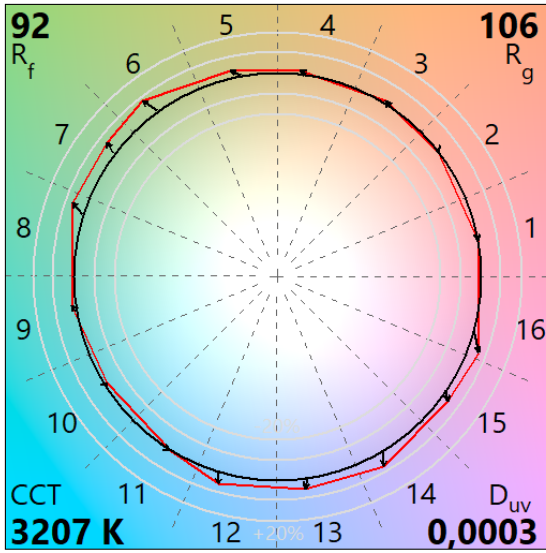
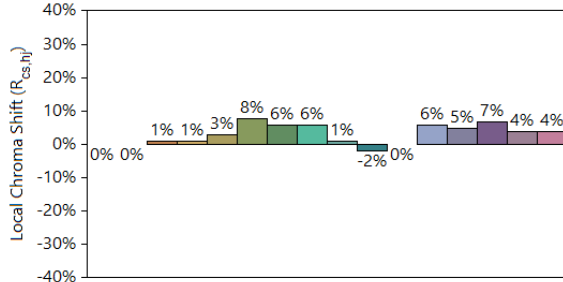
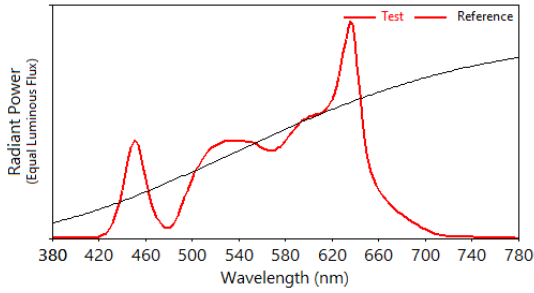
IES TM-30-18 Color Rendition Report

Source: Max CRI - 3200 K

Manufacturer: CLAY PAKY

Date: 01/12/2023

Model: RHAPSODYA



Notes:

x 0,4234
y 0,3998
u' 0,2436
v' 0,5177

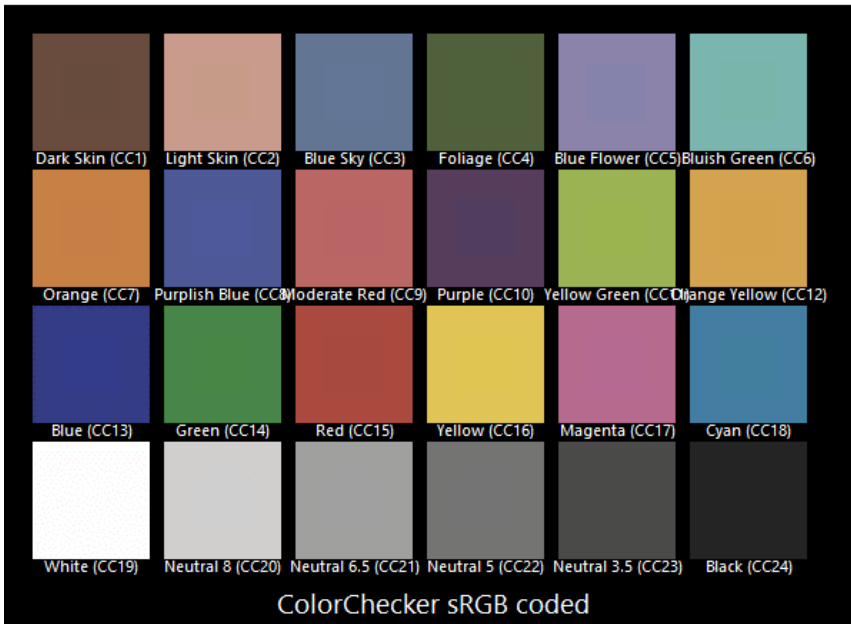
CIE 13.3-1995
(CRI)
R_a 94
R_g 95

Colors are for visual orientation purposes only.

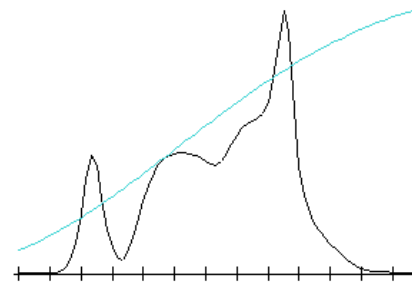
TLCI-2012: Max CRI - 3200K

Direct spectrum input : CCT = P3207 (+0.1)

TLCI-2012 : 82 (P3207)



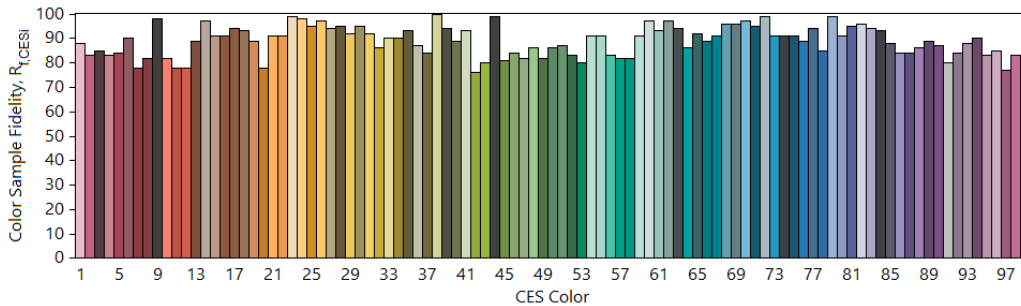
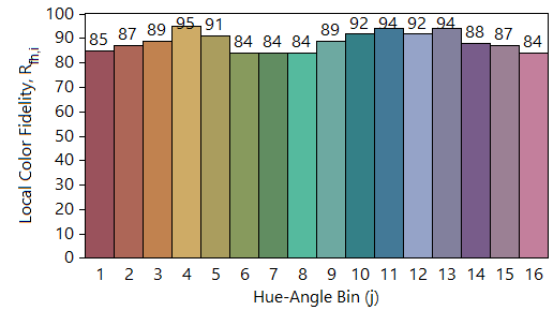
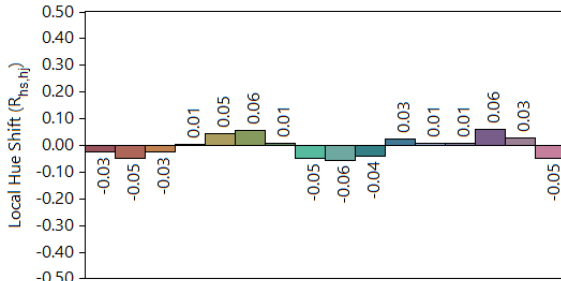
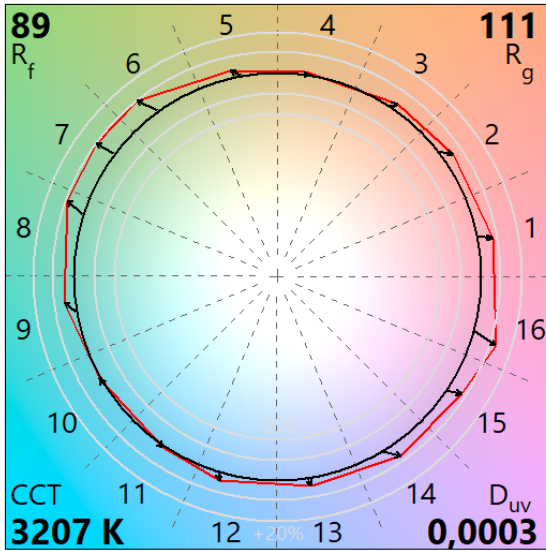
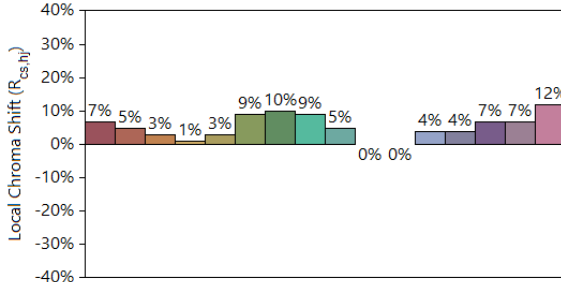
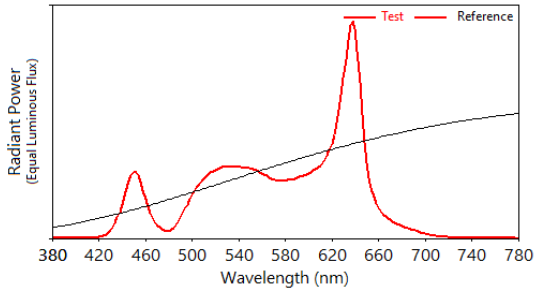
Sector	Lightness	Chroma	Hue
R	0	0	0
R/Y	0	0	0
Y	0	0	0
Y/G	0	-	0
G	0	-	0
G/C	0	-	++
C	0	--	+++++
C/B	0	+	+++
B	0	-	-
B/M	+	-	+++
M	+	0	+++
M/R	0	0	++



TM-30: MAX FLUX - 3200K

IES TM-30-18 Color Rendition Report

Source: Max FLUX - 3200 K Manufacturer: CLAY PAKY
 Date: 01/12/2023 Model: RHAPSODYA



Notes:

x 0,4233
 y 0,3997
 u' 0,2436
 v' 0,5176

CIE 13.3-1995
 (CRI)
 Ra 84
 Rg 37

Colors are for visual orientation purposes only.

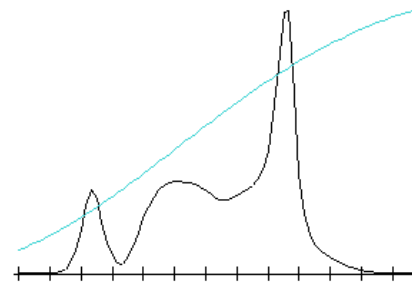
TLCI-2012: MAX FLUX - 3200K

Direct spectrum input : CCT = P3207 (+0.1)

TLCI-2012 : 81 (P3207)



Sector	Lightness	Chroma	Hue
R	--	-	0
R/Y	0	0	0
Y	0	0	0
Y/G	0	-	0
G	0	-	0
G/C	0	--	++
C	0	--	+++++
C/B	0	+	+++++
B	0	-	0
B/M	+	0	+++
M	0	-	+
M/R	-	-	0



TM-30: MAX CRI - 4000K

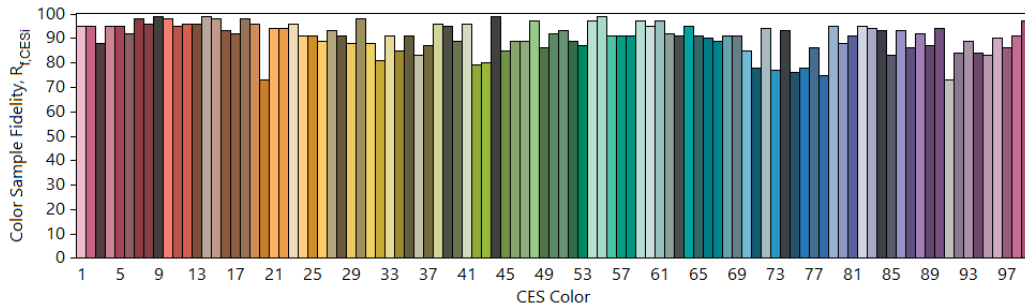
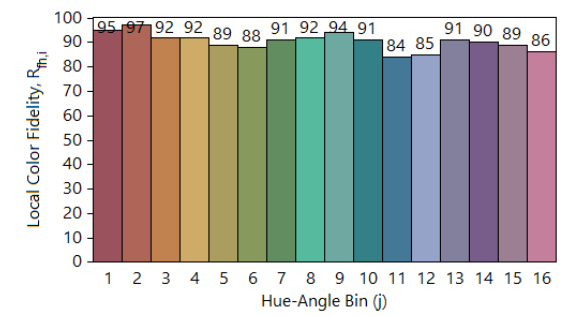
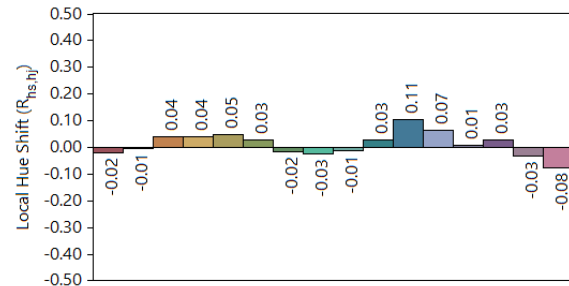
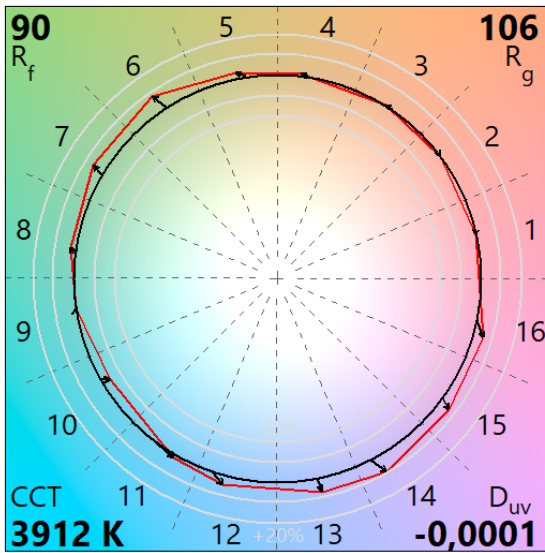
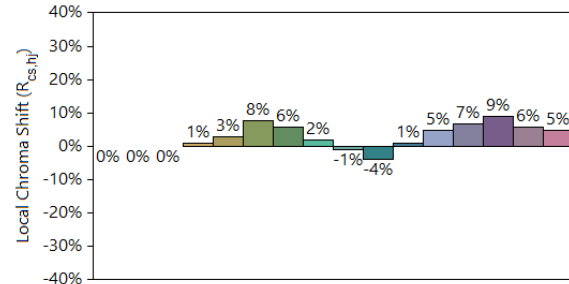
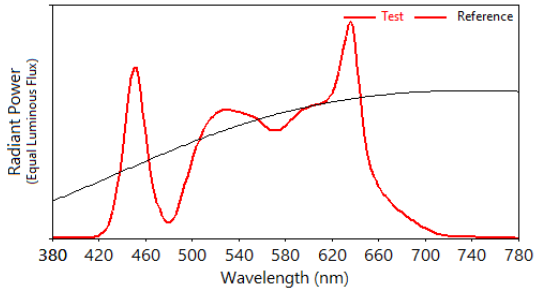
IES TM-30-18 Color Rendition Report

Source: Max CRI - 4000 K

Manufacturer: CLAY PAKY

Date: 01/12/2023

Model: RHAPSODYA



Notes:

x 0,3843
y 0,3789
u' 0,2268
v' 0,5031

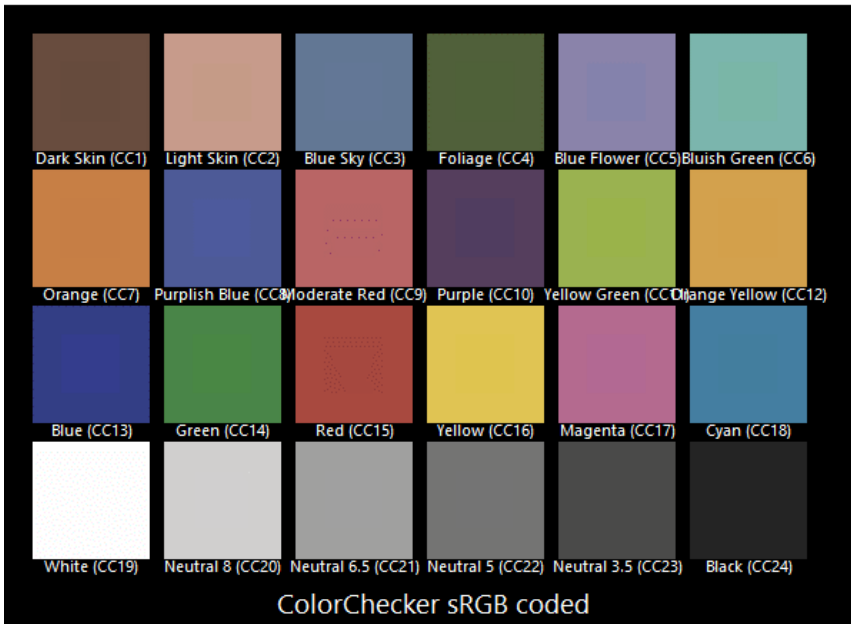
CIE 13.3-1995
(CRI)
Ra 93
Rg 97

Colors are for visual orientation purposes only.

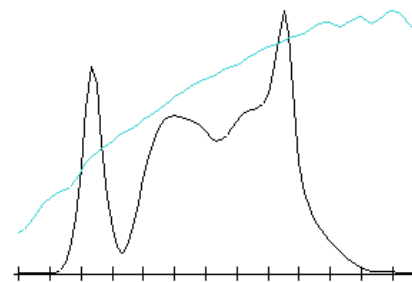
TLCI-2012: Max CRI - 4000K

Direct spectrum input : CCT = M3912 (0.0)

TLCI-2012 : 83 (M3912)



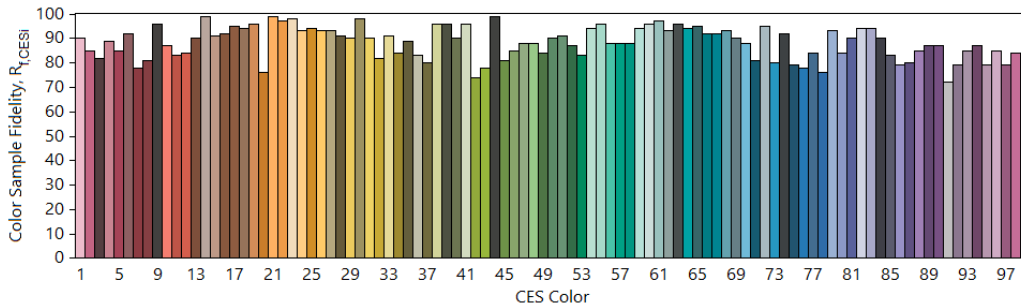
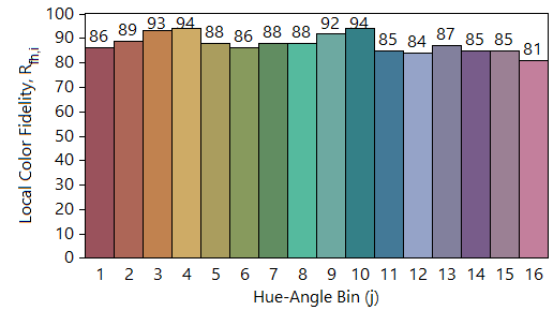
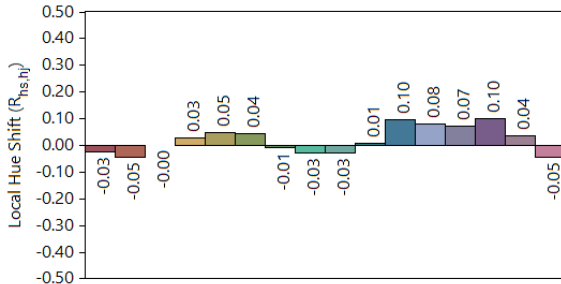
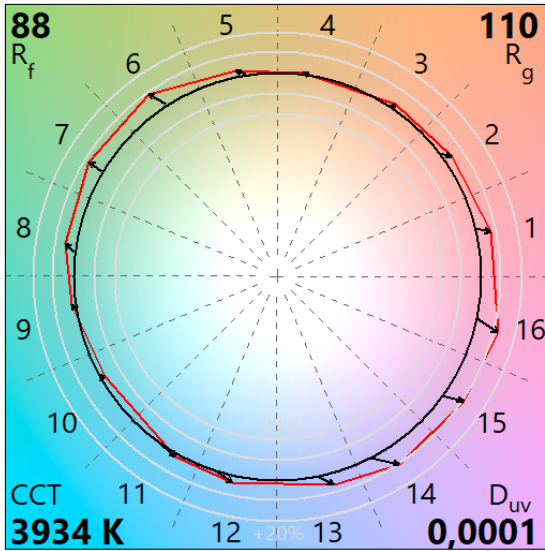
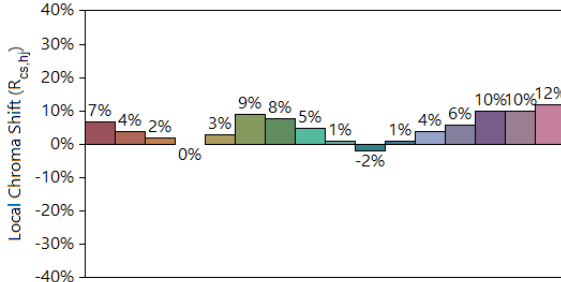
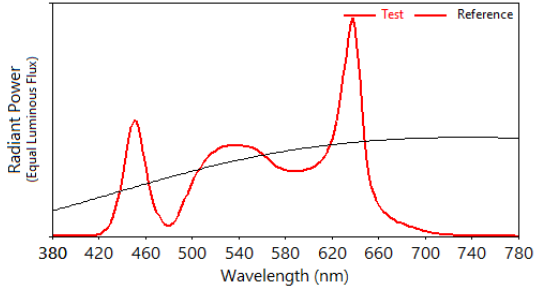
Sector	Lightness	Chroma	Hue
R	0	0	0
R/Y	0	0	0
Y	0	-	0
Y/G	0	-	0
G	0	-	+
G/C	0	--	++++
C	0	0	+++
C/B	0	0	++
B	0	--	-
B/M	+	-	+++
M	+	0	+++
M/R	0	0	++



TM-30: MAX FLUX - 4000K

IES TM-30-18 Color Rendition Report

Source: Max FLUX - 4000 K Manufacturer: CLAY PAKY
 Date: 01/12/2023 Model: RHAPSODYA



Notes:

x 0,3835
 y 0,3789
 u' 0,2262
 v' 0,5030

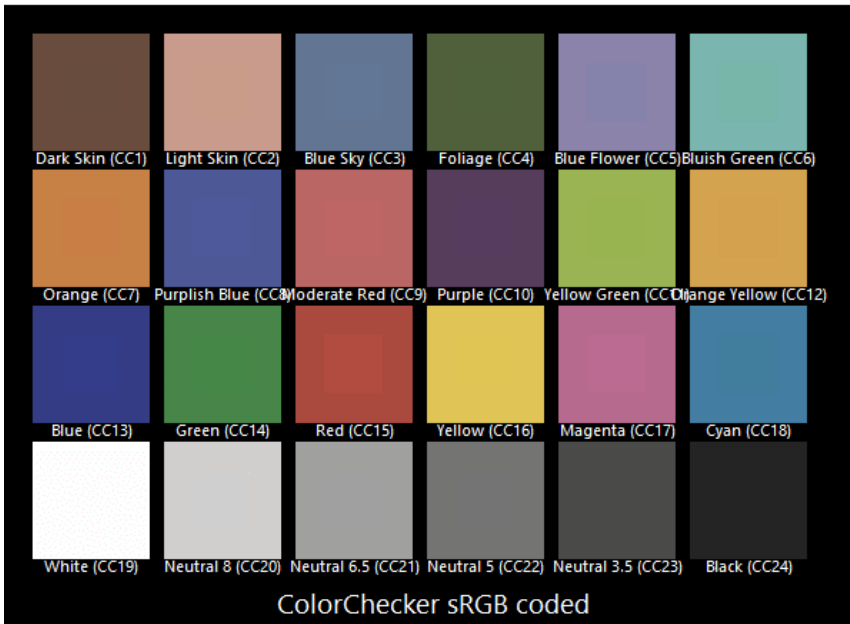
CIE 13.3-1995
 (CRI)
 R_a 85
 R_g 37

Colors are for visual orientation purposes only.

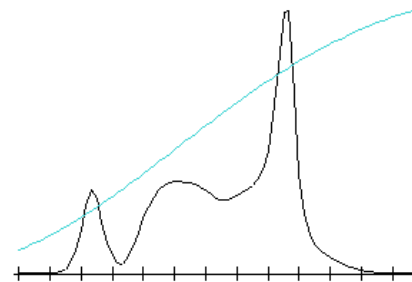
TLCI-2012: MAX FLUX - 4000K

Direct spectrum input : CCT = P3207 (+0.1)

TLCI-2012 : 81 (P3207)



Sector	Lightness	Chroma	Hue
R	--	-	0
R/Y	0	0	0
Y	0	0	0
Y/G	0	-	0
G	0	-	0
G/C	0	--	++
C	0	--	+++++
C/B	0	+	+++++
B	0	-	0
B/M	+	0	+++
M	0	-	+
M/R	-	-	0



TM-30: MAX CRI - 4400K

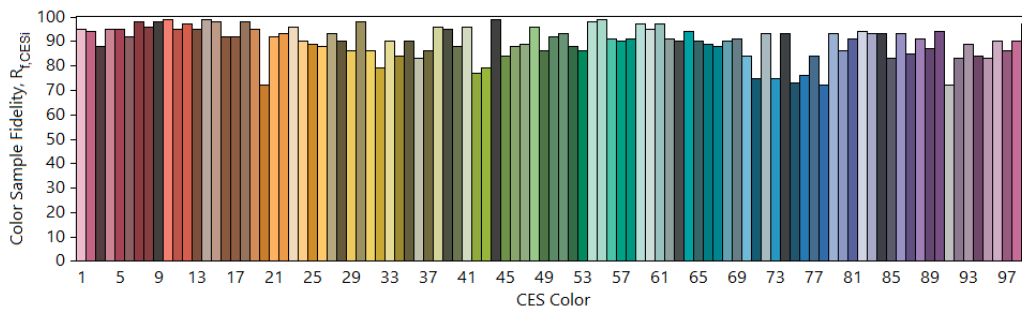
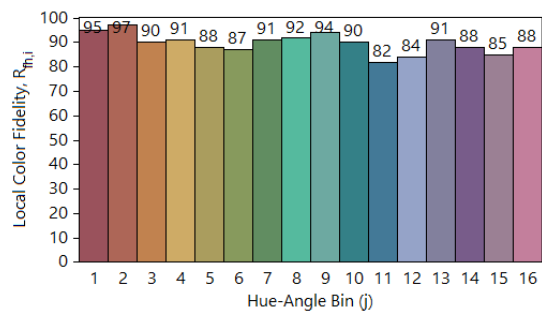
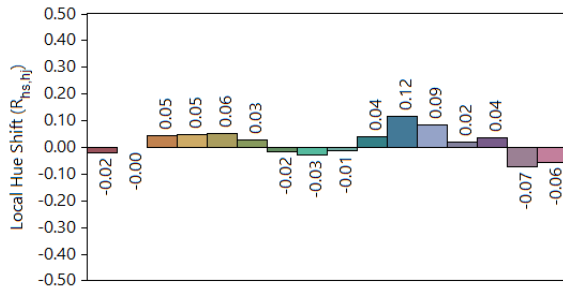
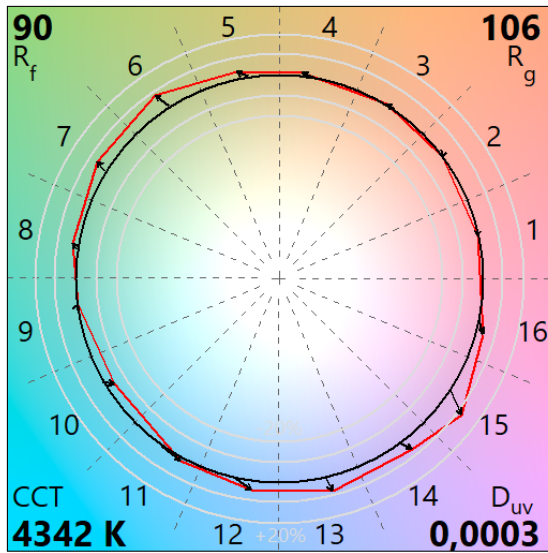
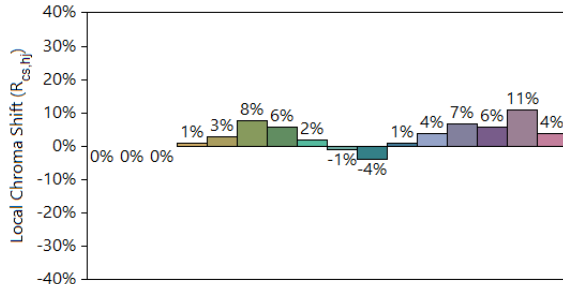
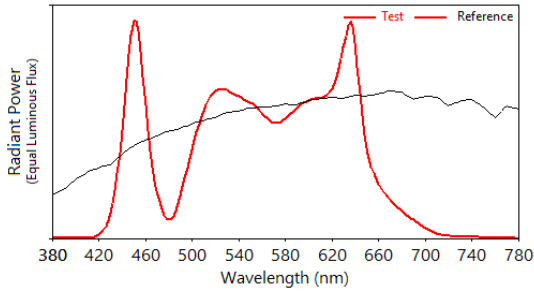
IES TM-30-18 Color Rendition Report

Source: Max CRI - 4400 K

Manufacturer: CLAY PAKY

Date: 01/12/2023

Model: RHAPSODYA



Notes:

x 0,3667
y 0,3684
u' 0,2193
v' 0,4958

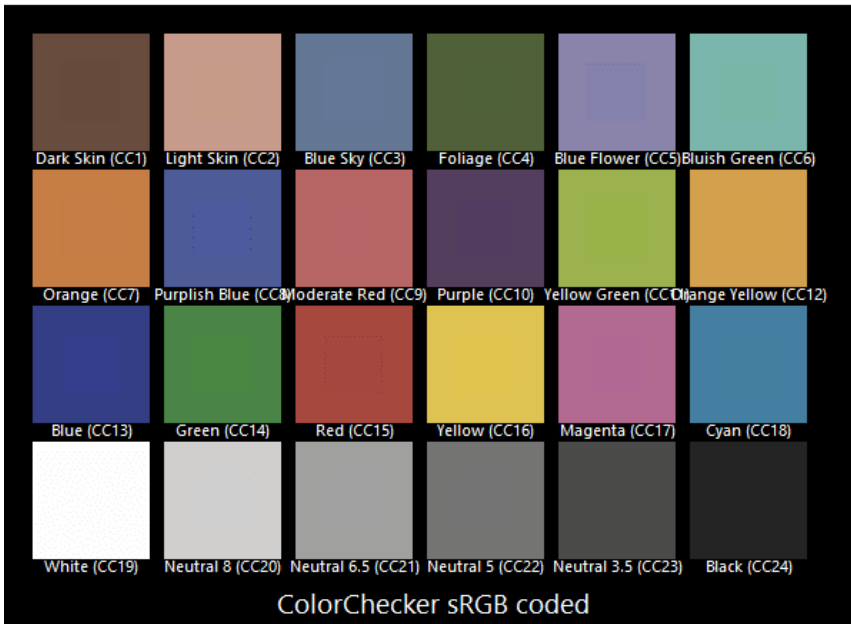
CIE 13.3-1995
(CRI)
 R_a 93
 R_g 97

Colors are for visual orientation purposes only.

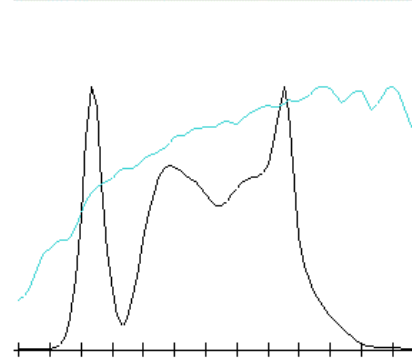
TLCI-2012: Max CRI - 4400K

Direct spectrum input : CCT = M4342 (+0.7)

TLCI-2012 : 83 (M4342)



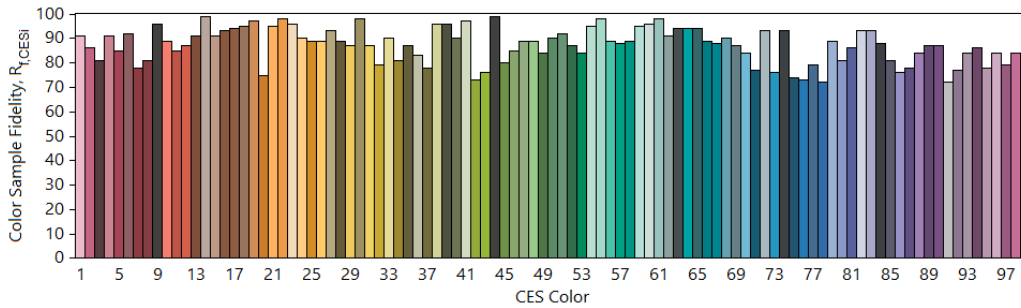
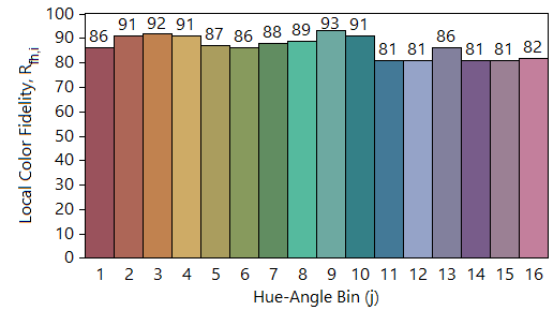
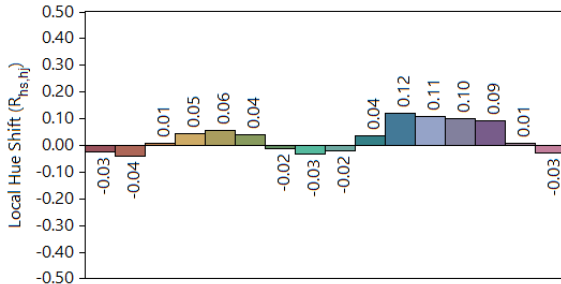
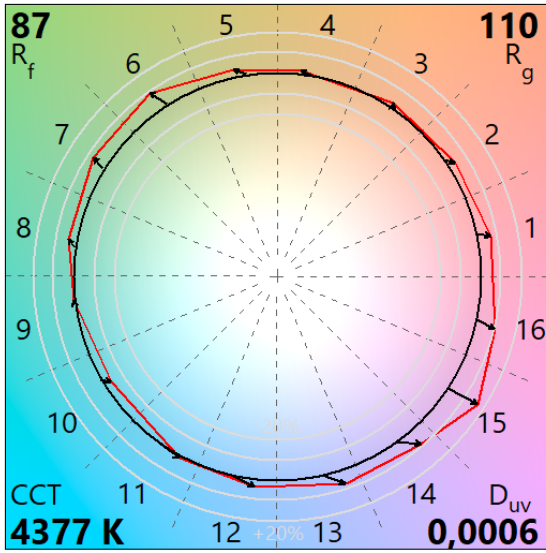
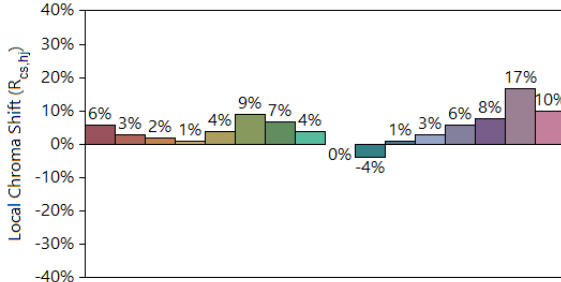
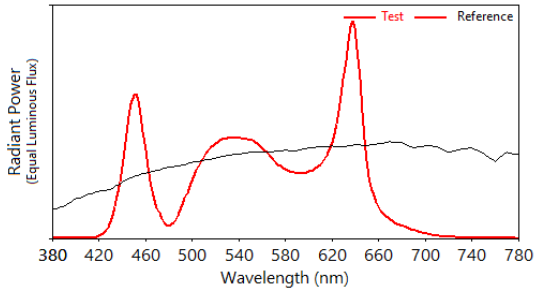
Sector	Lightness	Chroma	Hue
R	0	0	0
R/Y	0	0	0
Y	0	-	0
Y/G	0	-	0
G	0	-	+
G/C	0	--	++++
C	0	0	+++
C/B	0	0	++
B	0	--	-
B/M	+	-	+++
M	+	-	+++
M/R	0	0	++



TM-30: MAX FLUX - 4400K

IES TM-30-18 Color Rendition Report

Source: Max FLUX - 4400 K Manufacturer: CLAY PAKY
 Date: 01/12/2023 Model: RHAPSODYA



Notes:

x 0,3655
 y 0,3681
 u' 0,2187
 v' 0,4955

CIE 13.3-1995
 (CRI)
 R_a 85
 R_g 36

Colors are for visual orientation purposes only.

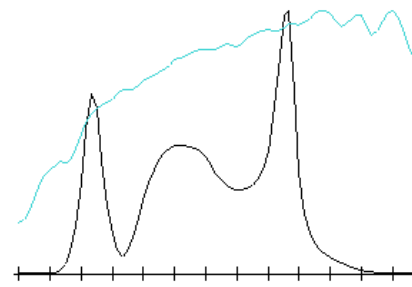
TLCI-2012: MAX FLUX - 4400K

Direct spectrum input : CCT = M4377 (+0.7)

TLCI-2012 : 85 (M4377)



Sector	Lightness	Chroma	Hue
R	--	-	0
R/Y	0	0	0
Y	0	-	-
Y/G	0	--	0
G	0	--	0
G/C	0	--	++++
C	0	0	+++
C/B	0	0	+
B	0	--	-
B/M	+	-	++
M	0	-	0
M/R	-	-	0



TM-30: MAX CRI - 5000K

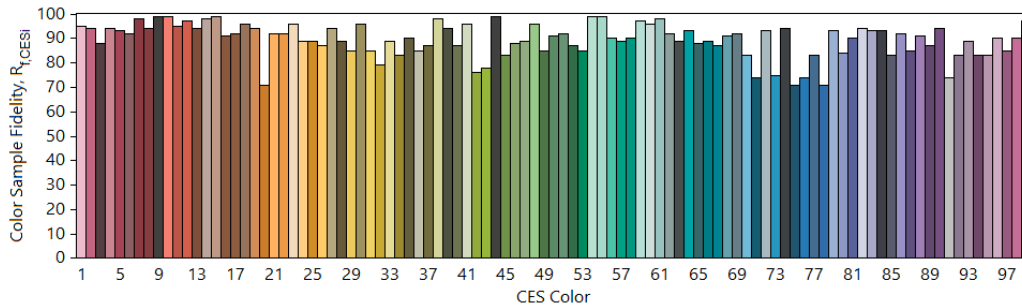
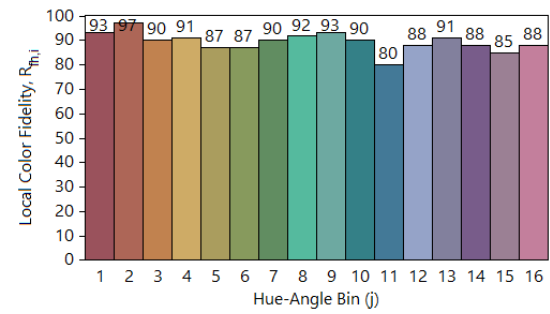
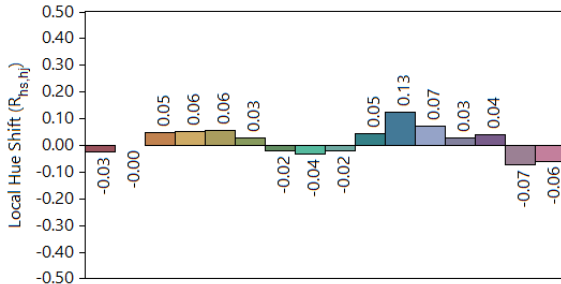
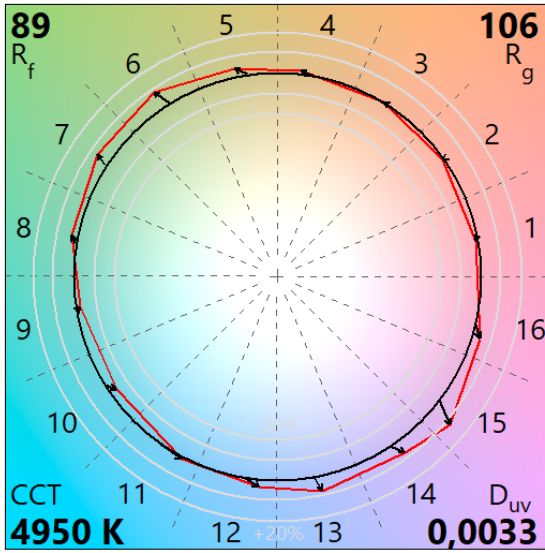
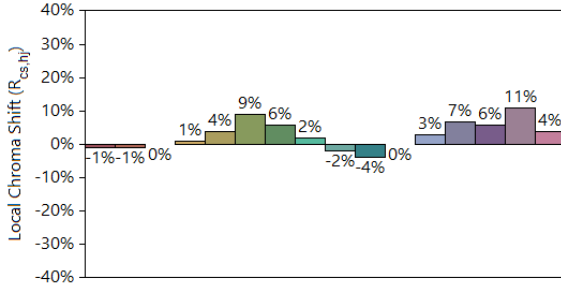
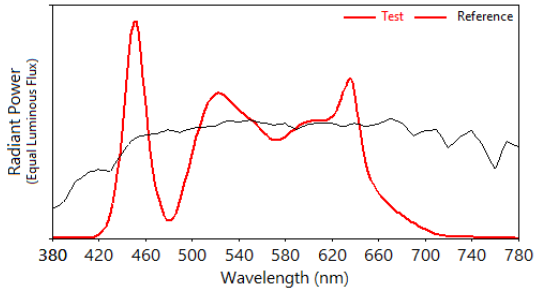
IES TM-30-18 Color Rendition Report

Source: Max CRI - 5000 K

Manufacturer: CLAY PAKY

Date: 01/12/2023

Model: RHAPSODYA



Notes:

x 0,3472
y 0,3600
u' 0,2096
v' 0,4890

CIE 13.3-1995
(CRI)
R_a 92
R_g 89

Colors are for visual orientation purposes only.

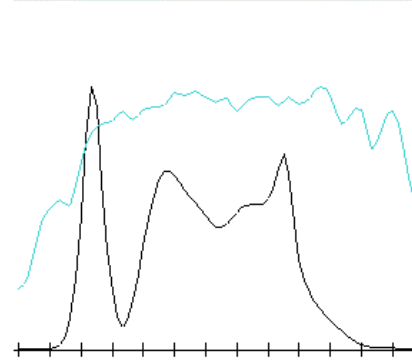
TLCI-2012: Max CRI - 5000K

Direct spectrum input : CCT = M4950 (+0.7)

TLCI-2012 : 84 (M4950)



Sector	Lightness	Chroma	Hue
R	0	0	0
R/Y	0	0	0
Y	0	-	0
Y/G	0	-	0
G	-	-	+
G/C	0	--	++++
C	0	0	+++
C/B	0	0	++
B	0	--	0
B/M	0	-	+++
M	0	-	+++
M/R	0	0	++



TM-30: MAX FLUX - 5000K

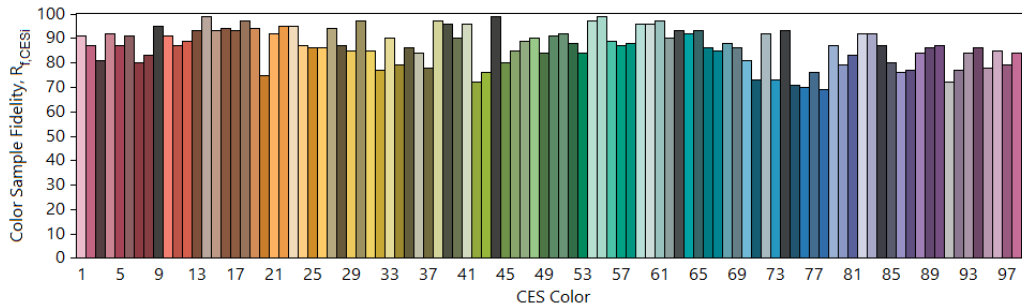
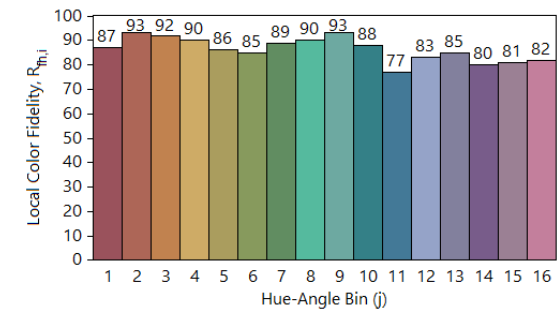
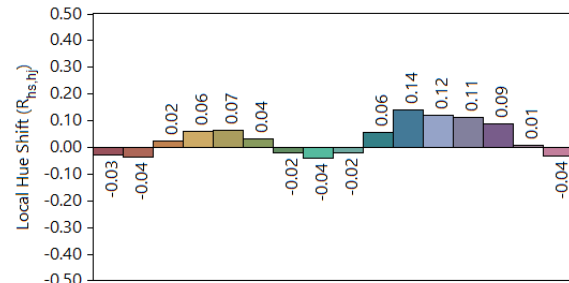
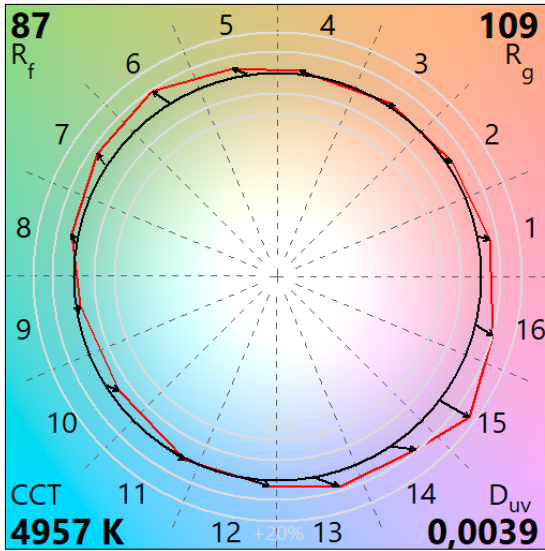
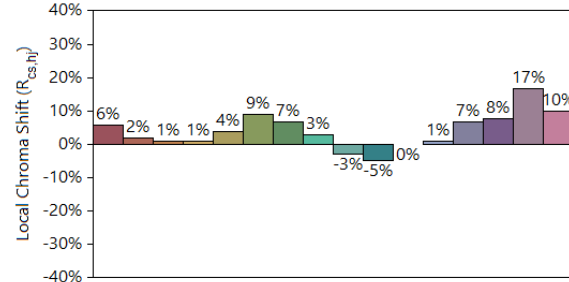
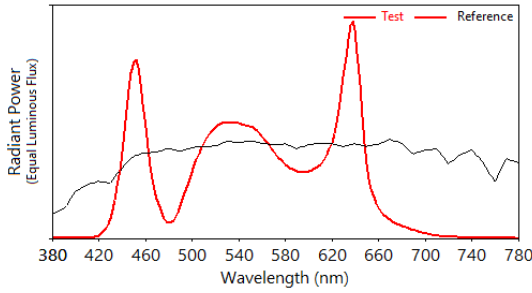
IES TM-30-18 Color Rendition Report

Source: Max FLUX - 5000 K

Manufacturer: CLAY PAKY

Date: 01/12/2023

Model: RHAPSODYA



Notes:

x 0,3472
y 0,3612
u' 0,2091
v' 0,4896

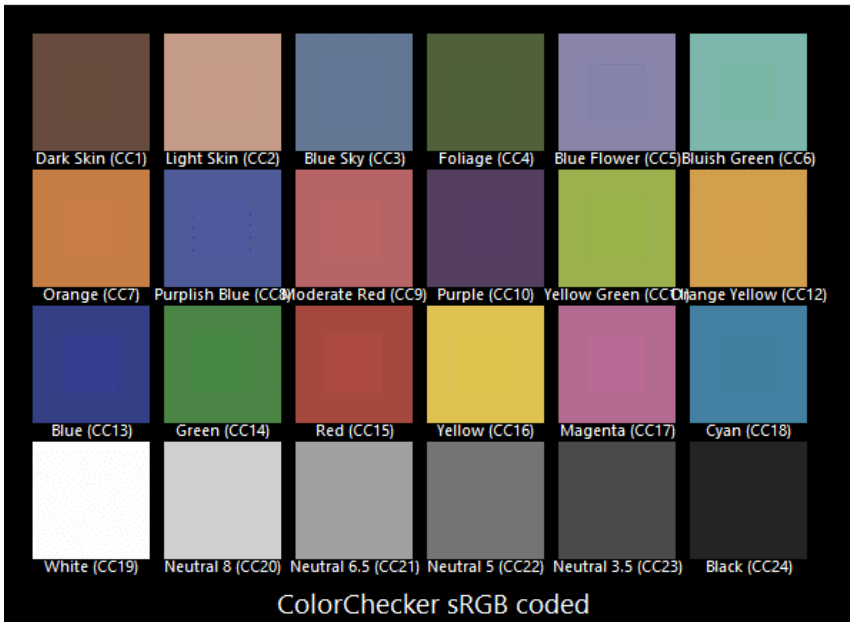
CIE 13.3-1995
(CRI)
Ra 86
Rg 44

Colors are for visual orientation purposes only.

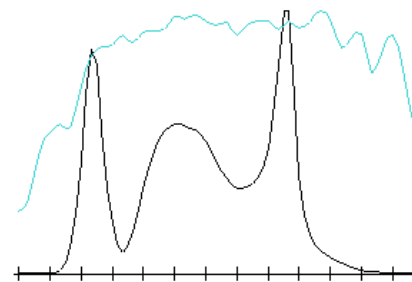
TLCI-2012: MAX FLUX - 5000K

Direct spectrum input : CCT = M4957 (+0.8)

TLCI-2012 : 85 (M4957)



Sector	Lightness	Chroma	Hue
R	--	-	0
R/Y	0	0	0
Y	0	-	-
Y/G	0	--	0
G	0	--	0
G/C	0	--	++++
C	0	0	++
C/B	0	0	0
B	0	--	--
B/M	+	-	+
M	0	-	0
M/R	-	-	0



TM-30: MAX CRI - 5600K

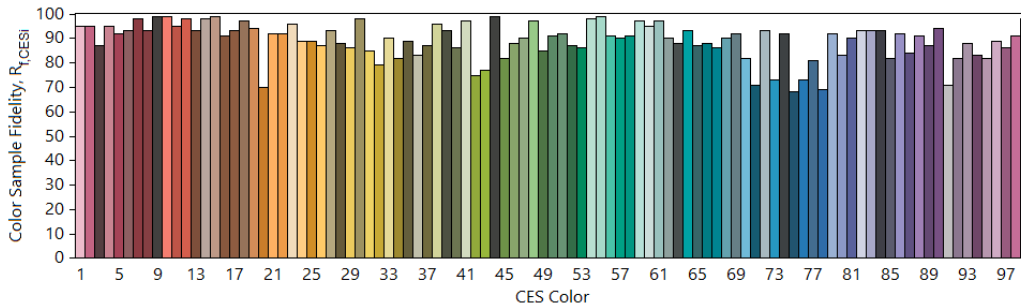
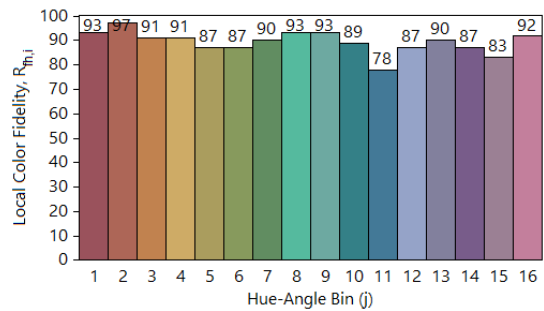
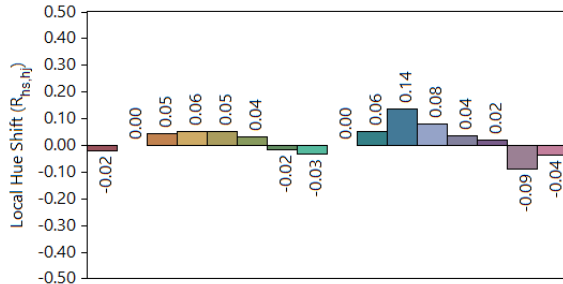
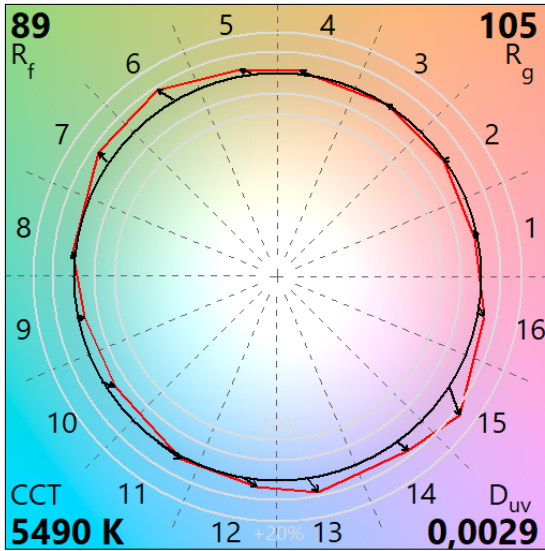
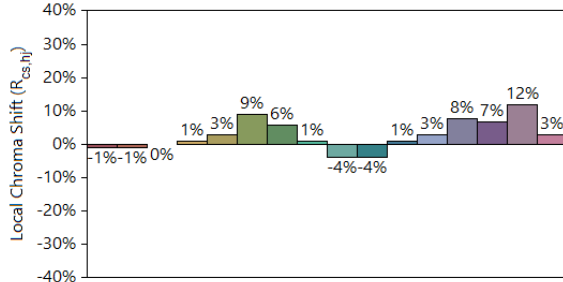
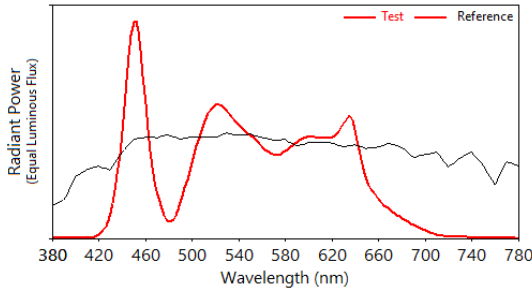
IES TM-30-18 Color Rendition Report

Source: Max CRI - 5600 K

Manufacturer: CLAY PAKY

Date: 01/12/2023

Model: RHAPSODYA



Notes:

x 0,3327
y 0,3471
u' 0,2048
v' 0,4806

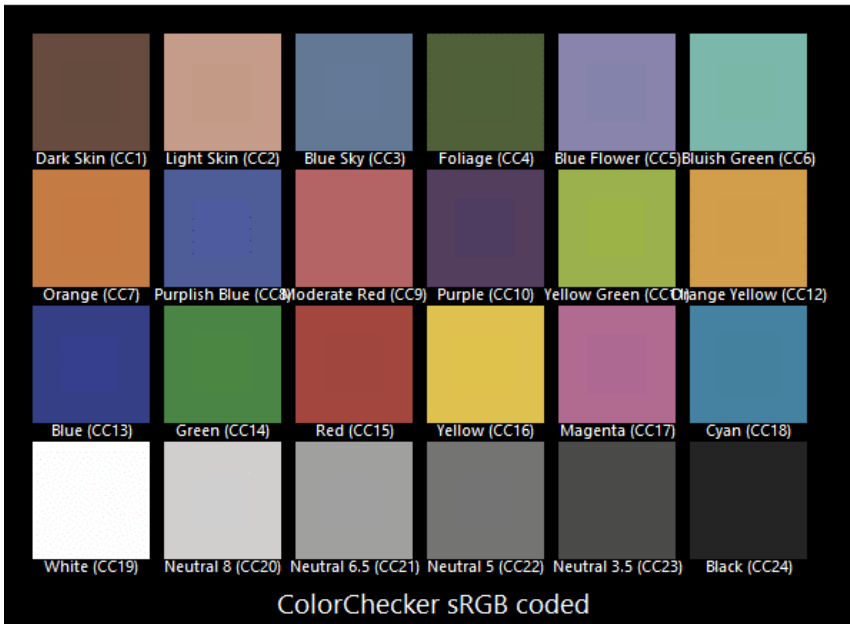
CIE 13.3-1995
(CRI)
 R_a 91
 R_g 85

Colors are for visual orientation purposes only.

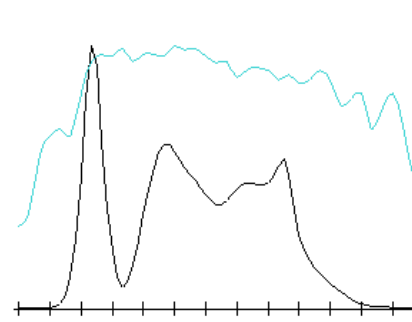
TLCI-2012: Max CRI - 5600K

Direct spectrum input : CCT = D5490 (-0.1)

TLCI-2012 : 85 (D5490)



Sector	Lightness	Chroma	Hue
R	0	0	0
R/Y	0	0	0
Y	0	-	0
Y/G	0	-	0
G	-	-	+
G/C	0	--	++++
C	0	0	+++
C/B	0	0	++
B	0	--	0
B/M	0	-	+++
M	+	-	++
M/R	+	0	++



TM-30: MAX FLUX - 5600K

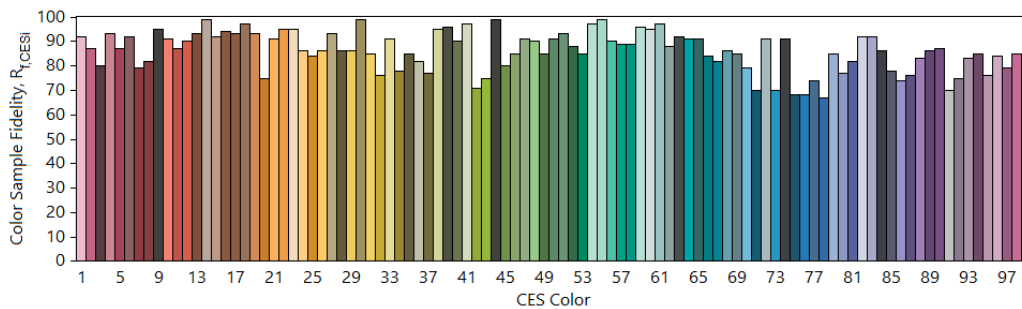
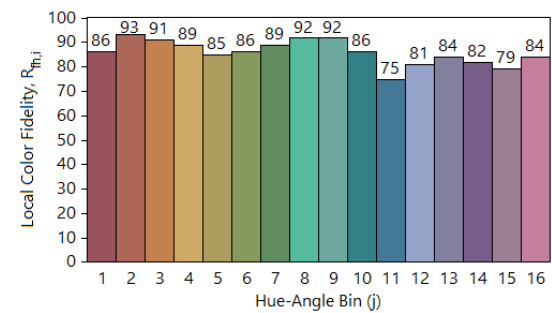
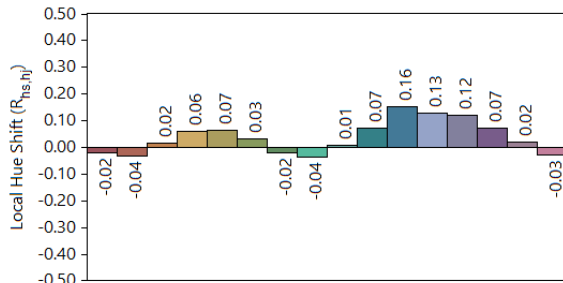
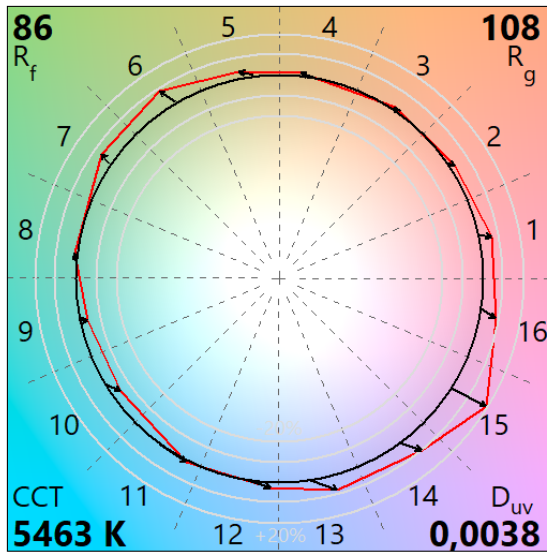
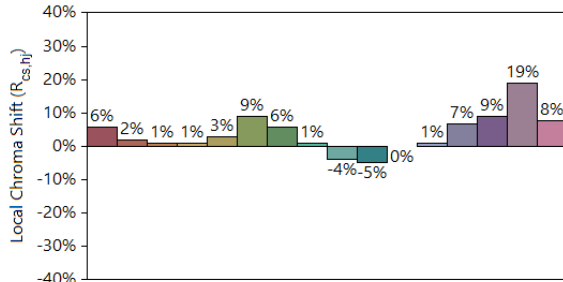
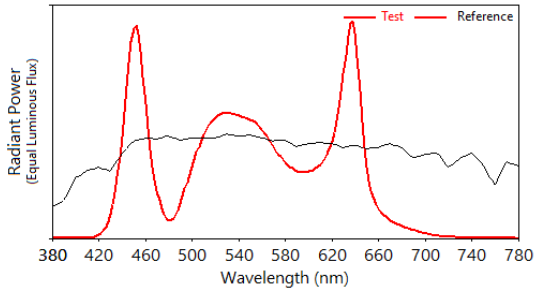
IES TM-30-18 Color Rendition Report

Source: Max FLUX - 5600 K

Manufacturer: CLAY PAKY

Date: 01/12/2023

Model: RHAPSODYA



Notes:

x 0,3334
y 0,3493
u' 0,2044
v' 0,4818

CIE 13.3-1995
(CRI)
R_a 85
R_g 42

Colors are for visual orientation purposes only.

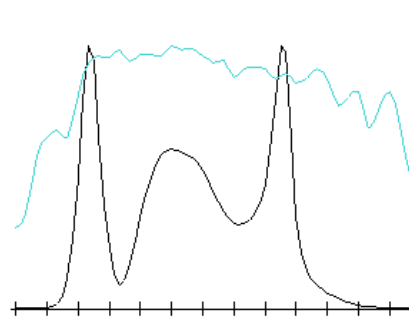
TLCI-2012: MAX FLUX - 5600K

Direct spectrum input : CCT = D5463 (+0.1)

TLCI-2012 : 85 (D5463)



Sector	Lightness	Chroma	Hue
R	--	-	0
R/Y	0	0	0
Y	0	-	-
Y/G	0	-	-
G	0	--	0
G/C	0	--	+++
C	0	0	++
C/B	+	0	0
B	0	--	--
B/M	+	-	+
M	0	-	0
M/R	--	--	0



TM-30: MAX CRI - 6000K

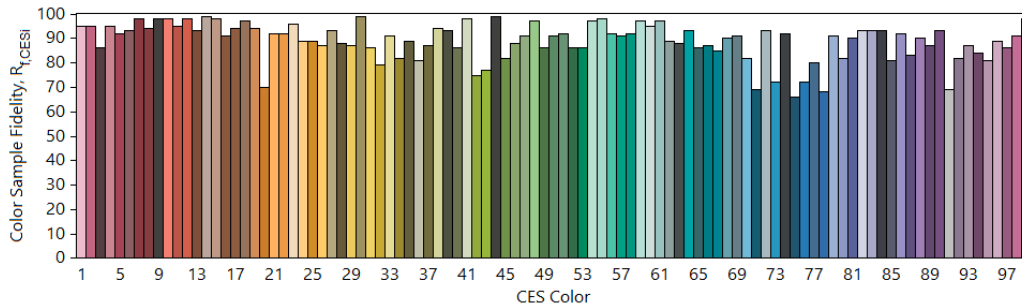
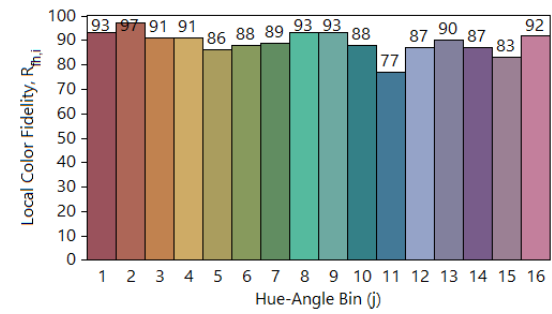
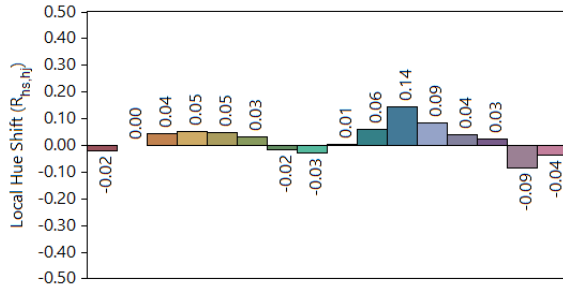
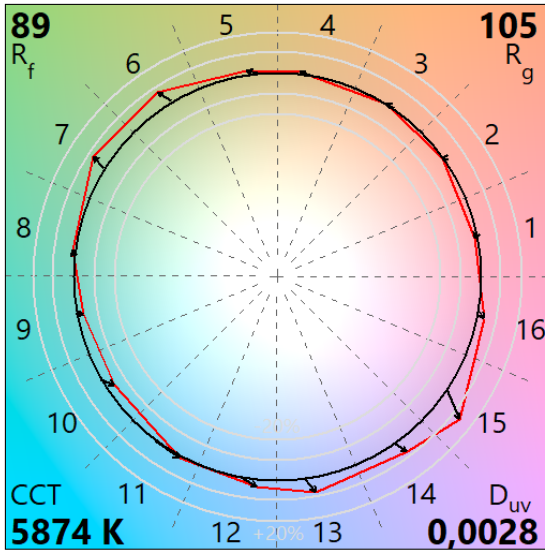
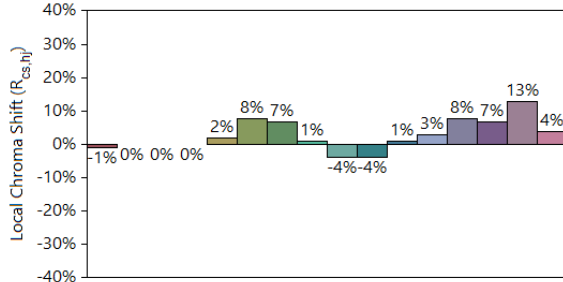
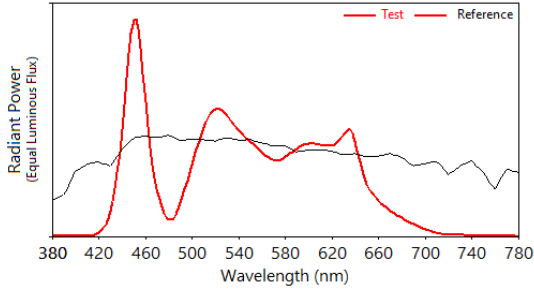
IES TM-30-18 Color Rendition Report

Source: Max CRI - 6000 K

Manufacturer: CLAY PAKY

Date: 01/12/2023

Model: RHAPSODYA



Notes:

x 0,3242
y 0,3392
u' 0,2020
v' 0,4754

CIE 13.3-1995
(CRI)
R_a 91
R_g 87

Colors are for visual orientation purposes only.

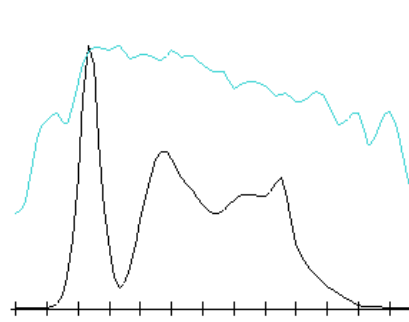
TLCI-2012: Max CRI - 6000K

Direct spectrum input : CCT = D5874 (-0.1)

TLCI-2012 : 86 (D5874)



Sector	Lightness	Chroma	Hue
R	0	0	0
R/Y	0	0	0
Y	0	-	0
Y/G	0	-	0
G	-	-	+
G/C	0	--	++++
C	0	0	+++
C/B	0	0	++
B	0	--	0
B/M	0	-	+++
M	0	0	++
M/R	+	0	++



TM-30: MAX FLUX - 6000K

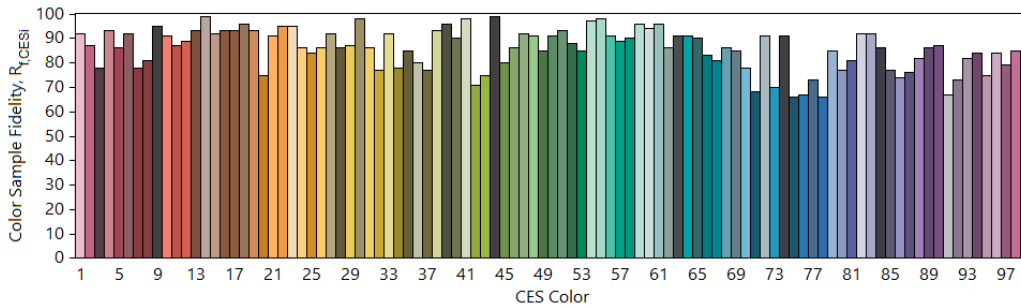
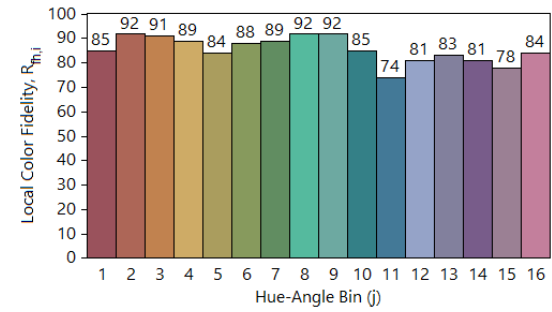
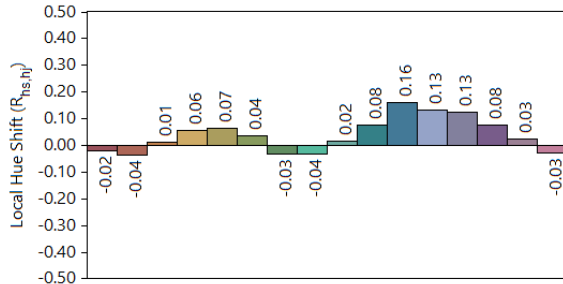
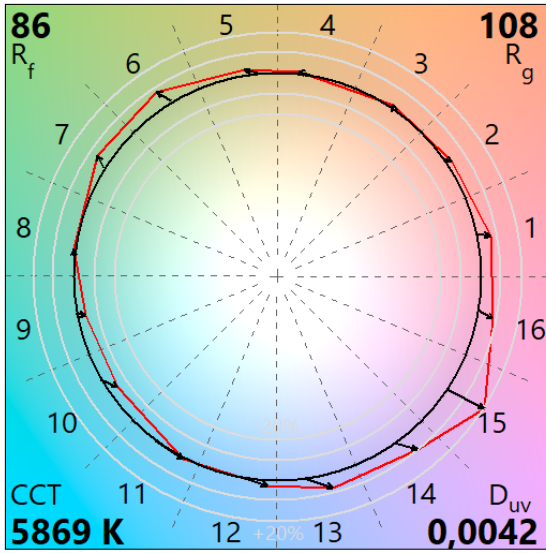
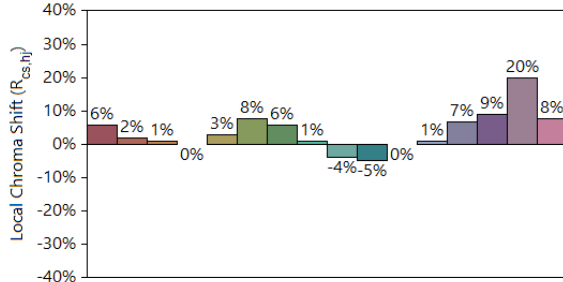
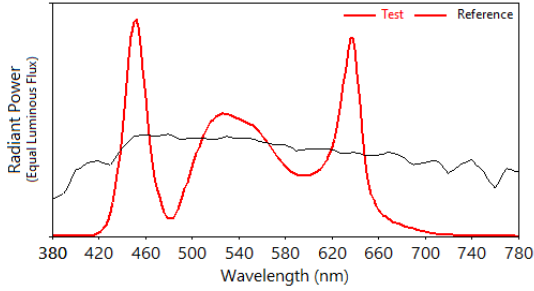
IES TM-30-18 Color Rendition Report

Source: Max FLUX - 6000 K

Manufacturer: CLAY PAKY

Date: 01/12/2023

Model: RHAPSODYA



Notes:

x 0,3242
y 0,3419
u' 0,2009
v' 0,4767

CIE 13.3-1995

(CRI)

R_a 85

R_g 40

Colors are for visual orientation purposes only.

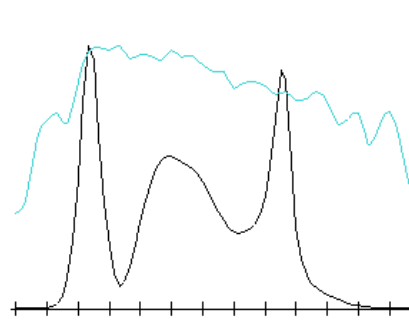
TLCI-2012: MAX FLUX - 6000K

Direct spectrum input : CCT = D5869 (+0.2)

TLCI-2012 : 85 (D5869)



Sector	Lightness	Chroma	Hue
R	--	-	0
R/Y	0	0	0
Y	0	-	-
Y/G	0	-	-
G	0	--	0
G/C	0	--	+++
C	0	-	++
C/B	0	0	0
B	0	--	--
B/M	+	-	+
M	0	-	0
M/R	--	--	0



TM-30: MAX CRI - 6500K

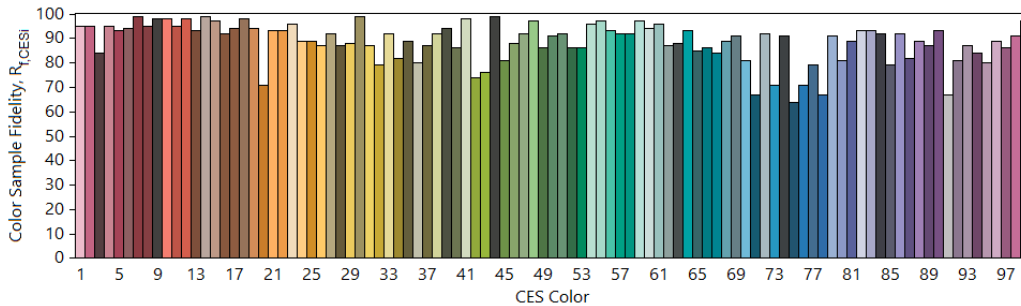
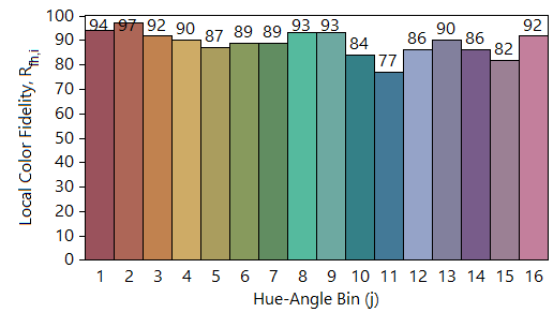
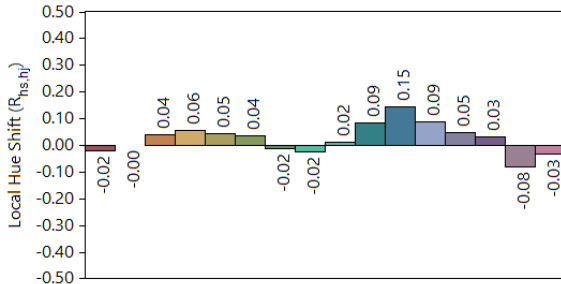
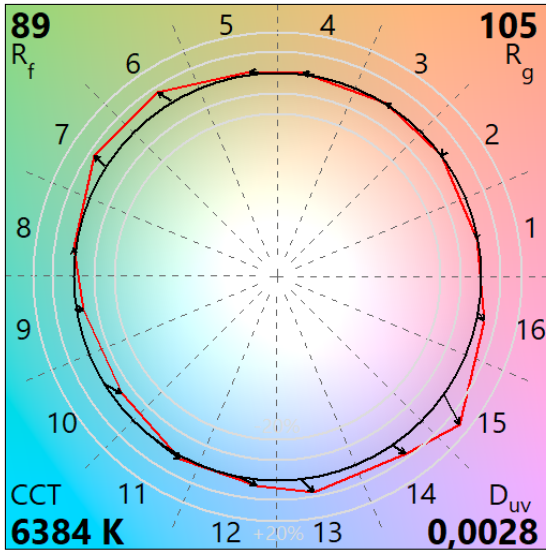
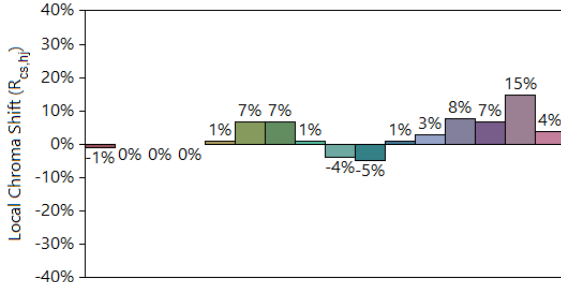
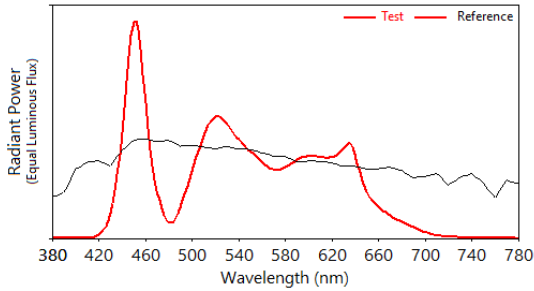
IES TM-30-18 Color Rendition Report

Source: Max CRI - 6500 K

Manufacturer: CLAY PAKY

Date: 01/12/2023

Model: RHAPSODYA



Notes:

x 0,3148
y 0,3303
u' 0,1988
v' 0,4693

CIE 13.3-1995
(CRI)
R_a 91
R_g 91

Colors are for visual orientation purposes only.

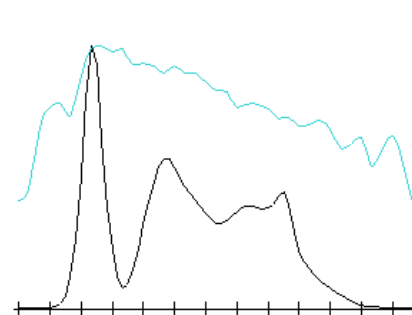
TLCI-2012: Max CRI - 6500K

Direct spectrum input : CCT = D6384 (-0.1)

TLCI-2012 : 87 (D6384)



Sector	Lightness	Chroma	Hue
R	0	0	0
R/Y	0	0	0
Y	0	-	0
Y/G	0	-	0
G	-	--	0
G/C	0	--	++++
C	0	0	+++
C/B	0	0	++
B	0	--	0
B/M	0	-	++
M	0	0	++
M/R	0	0	++



TM-30: MAX FLUX - 6500K

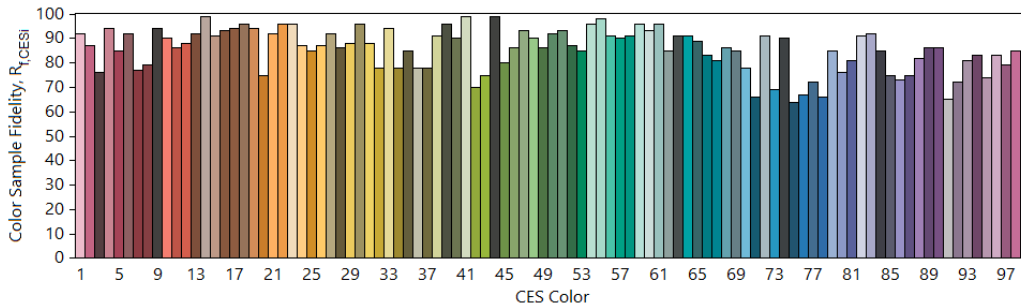
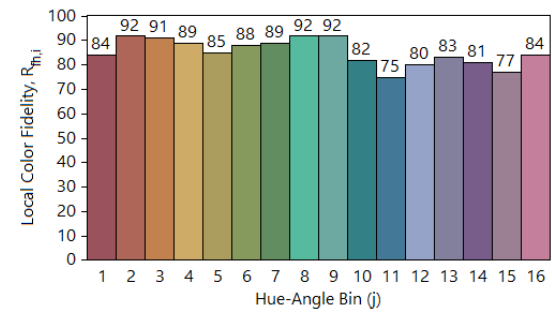
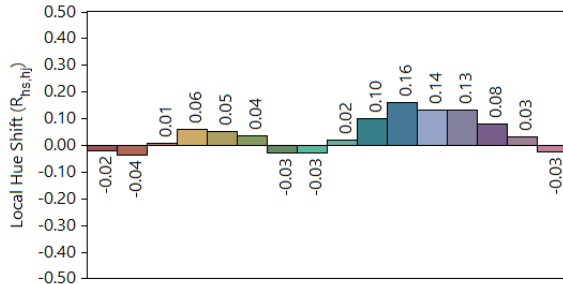
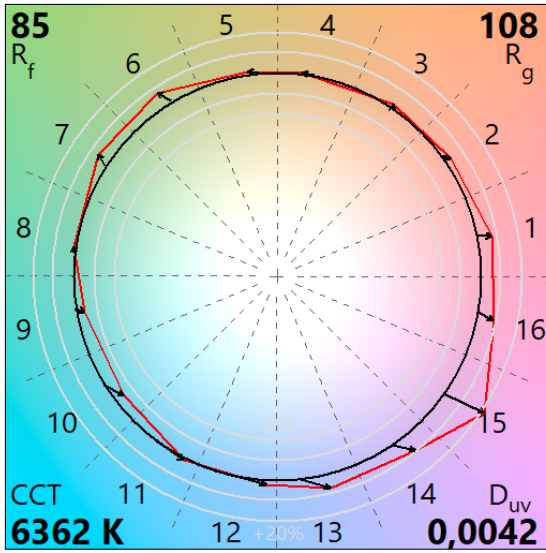
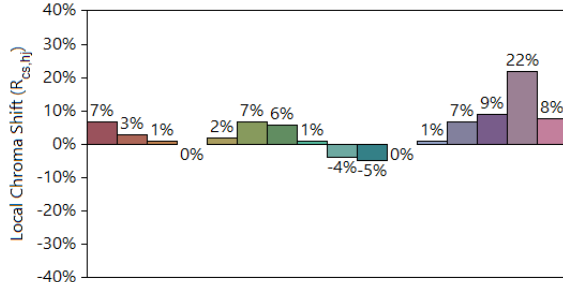
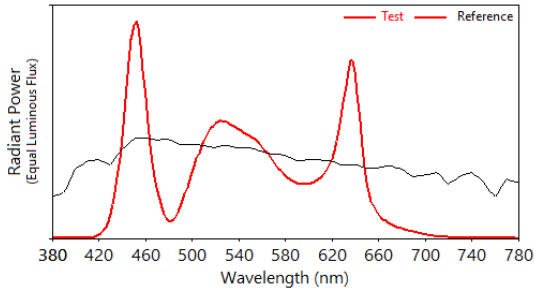
IES TM-30-18 Color Rendition Report

Source: Max FLUX - 6500 K

Manufacturer: CLAY PAKY

Date: 01/12/2023

Model: RHAPSODYA



Notes:

x 0,3149
y 0,3331
u' 0,1978
v' 0,4708

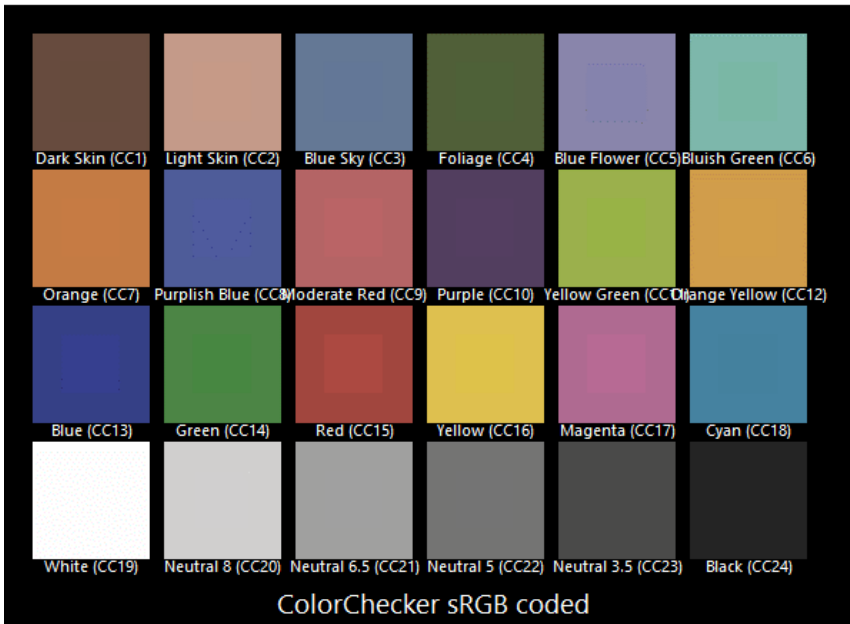
CIE 13.3-1995
(CRI)
 R_a 84
 R_g 36

Colors are for visual orientation purposes only.

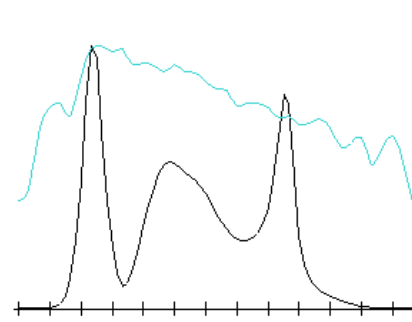
TLCI-2012: MAX FLUX - 6500K

Direct spectrum input : CCT = D6362 (+0.2)

TLCI-2012 : 84 (D6362)



Sector	Lightness	Chroma	Hue
R	---	-	0
R/Y	0	0	0
Y	0	-	-
Y/G	0	-	0
G	-	---	+
G/C	0	---	+++
C	0	-	+
C/B	0	0	0
B	0	---	---
B/M	+	-	+
M	0	-	0
M/R	---	---	0



TM-30: MAX CRI - 7000K

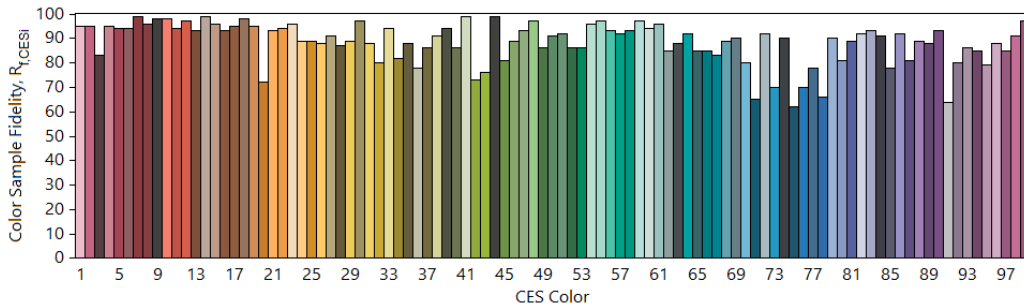
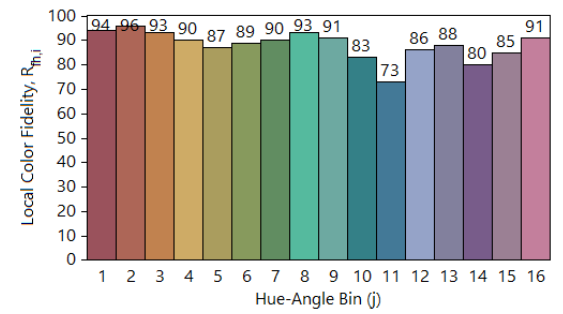
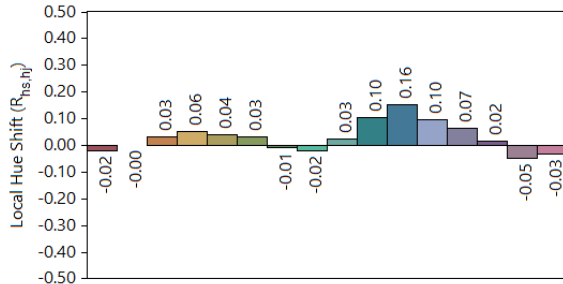
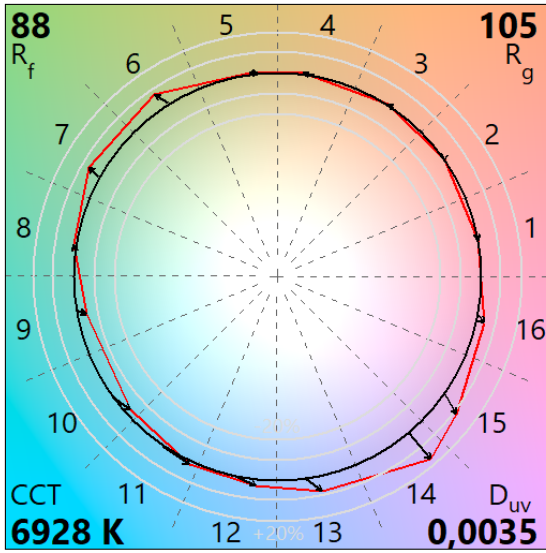
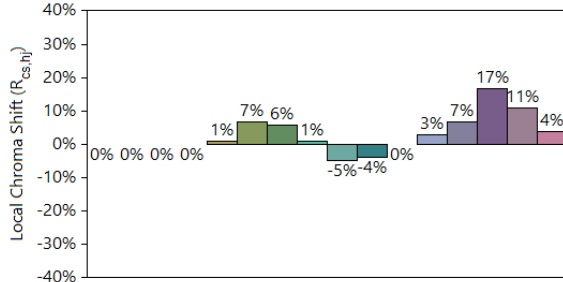
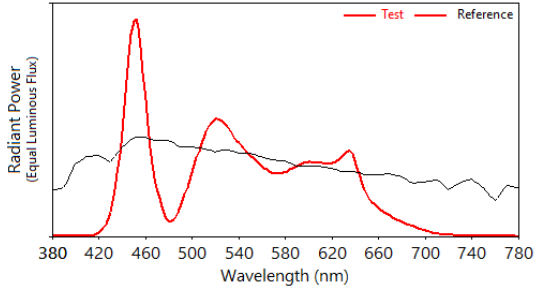
IES TM-30-18 Color Rendition Report

Source: Max CRI - 7000 K

Manufacturer: CLAY PAKY

Date: 01/12/2023

Model: RHAPSODYA



Notes:

x 0,3062
y 0,3231
u' 0,1955
v' 0,4641

CIE 13.3-1995
(CRI)
R_a 91
R_g 94

Colors are for visual orientation purposes only.

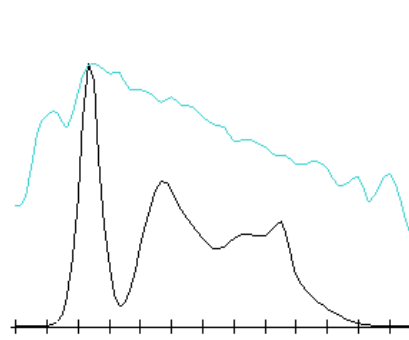
TLCI-2012: Max CRI - 7000K

Direct spectrum input : CCT = D6928 (+0.1)

TLCI-2012 : 88 (D6928)



Sector	Lightness	Chroma	Hue
R	0	0	0
R/Y	0	0	0
Y	0	-	0
Y/G	0	-	0
G	-	--	0
G/C	0	--	++++
C	0	0	++
C/B	0	0	+
B	0	--	0
B/M	0	-	++
M	0	0	++
M/R	0	0	+



TM-30: MAX FLUX - 7000K

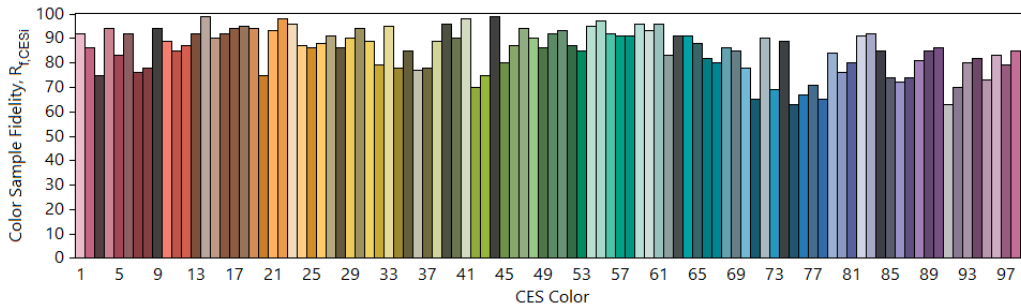
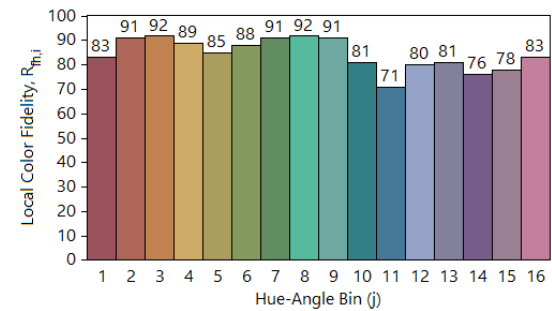
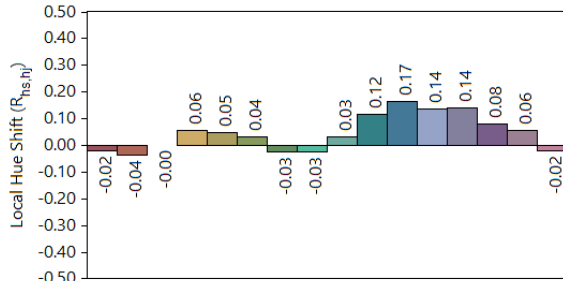
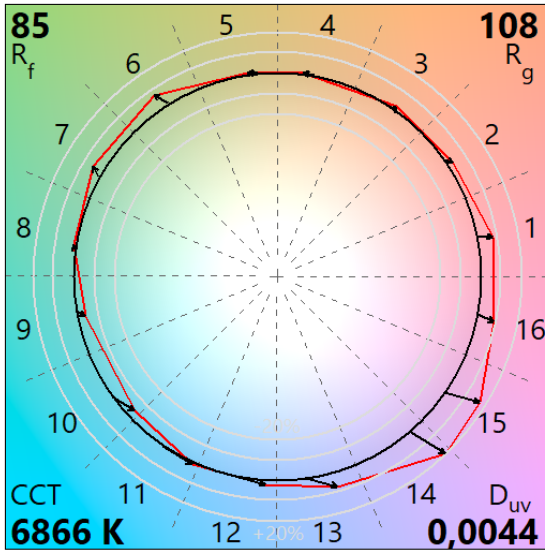
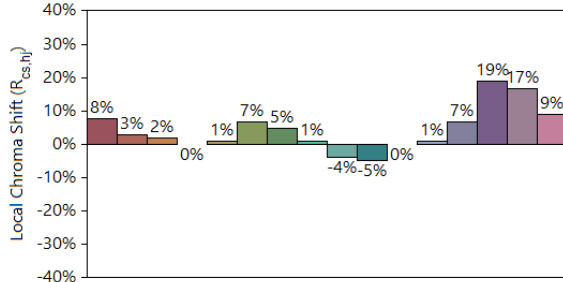
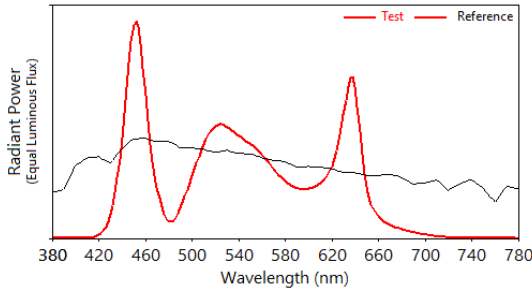
IES TM-30-18 Color Rendition Report

Source: Max FLUX - 7000 K

Manufacturer: CLAY PAKY

Date: 01/12/2023

Model: RHAPSODYA



Notes:

x 0,3068
y 0,3255
u' 0,1951
v' 0,4655

CIE 13.3-1995
(CRI)
 R_a 84
 R_g 33

Colors are for visual orientation purposes only.

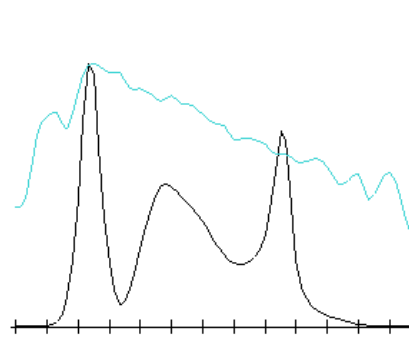
TLCI-2012: MAX FLUX - 7000K

Direct spectrum input : CCT = D6866 (+0.2)

TLCI-2012 : 83 (D6866)



Sector	Lightness	Chroma	Hue
R	---	-	0
R/Y	0	0	0
Y	0	-	-
Y/G	0	--	0
G	-	--	0
G/C	0	--	+++
C	0	-	+
C/B	0	0	0
B	0	--	--
B/M	+	-	+
M	0	-	0
M/R	--	--	-



TM-30: MAX CRI - 7500K

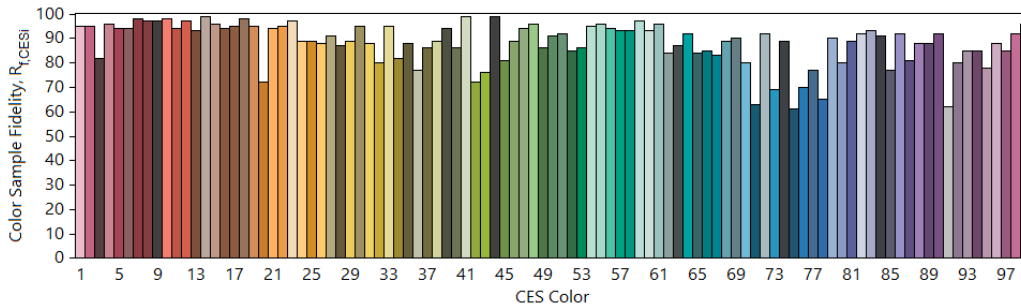
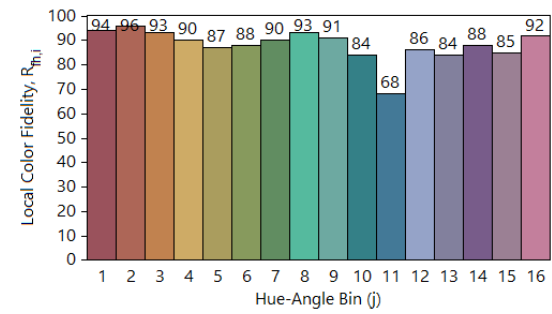
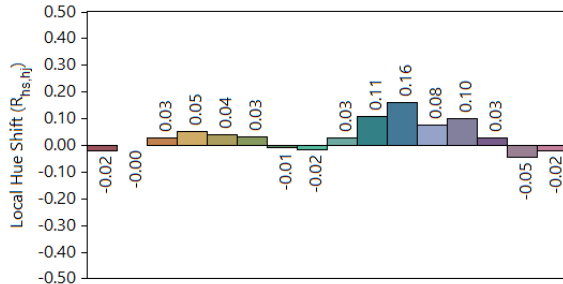
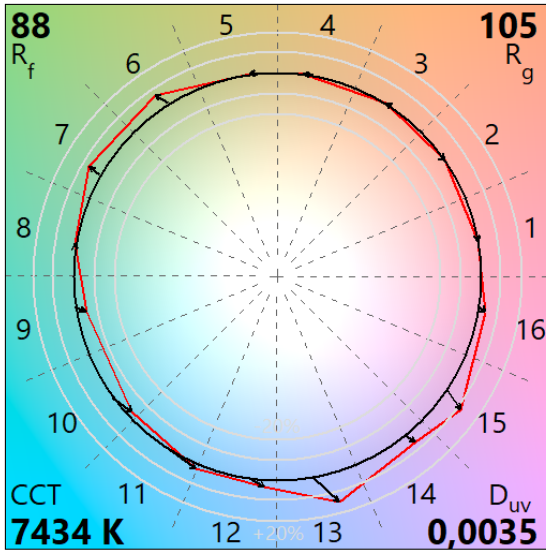
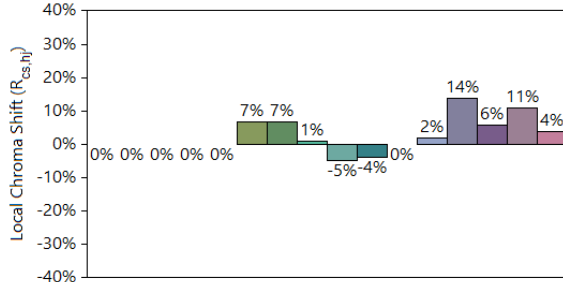
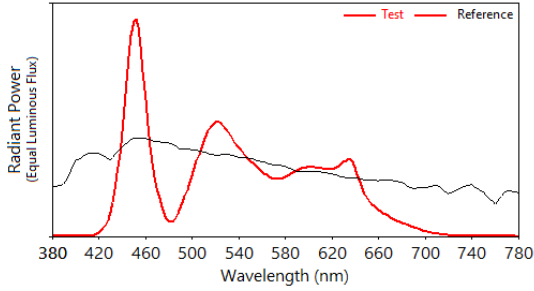
IES TM-30-18 Color Rendition Report

Source: Max CRI - 7500 K

Manufacturer: CLAY PAKY

Date: 01/12/2023

Model: RHAPSODYA



Notes:

x 0,2997
y 0,3163
u' 0,1935
v' 0,4594

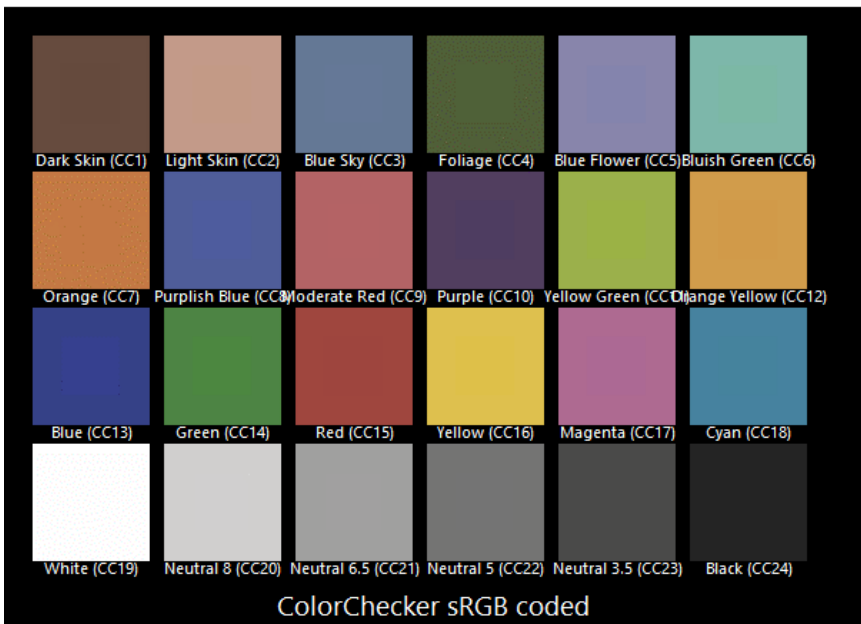
CIE 13.3-1995
(CRI)
Ra 91
Rg 95

Colors are for visual orientation purposes only.

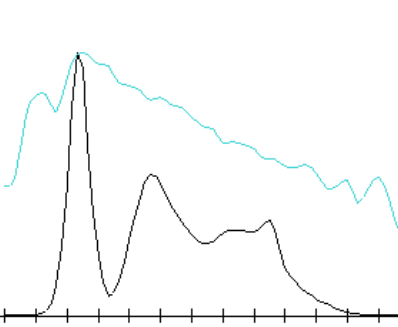
TLCI-2012: Max CRI - 7500K

Direct spectrum input : CCT = D7434 (+0.1)

TLCI-2012 : 88 (D7434)



Sector	Lightness	Chroma	Hue
R	0	0	0
R/Y	0	0	0
Y	0	-	0
Y/G	0	-	0
G	-	--	0
G/C	0	--	+++
C	0	-	++
C/B	0	0	+
B	0	--	0
B/M	0	-	++
M	0	0	++
M/R	0	0	+



TM-30: MAX FLUX - 7500K

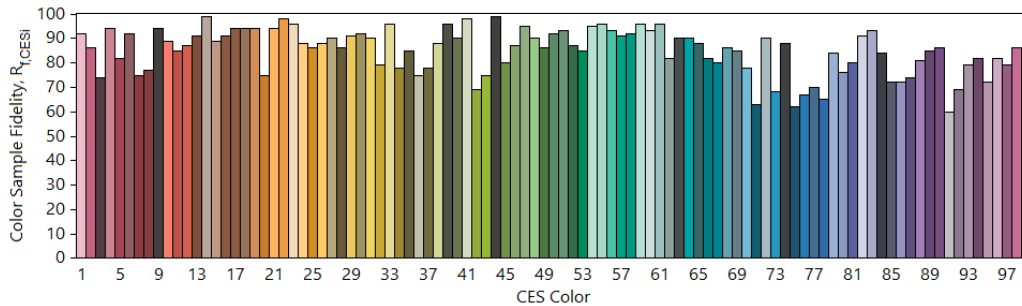
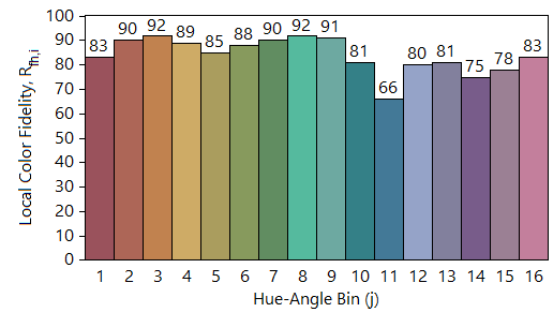
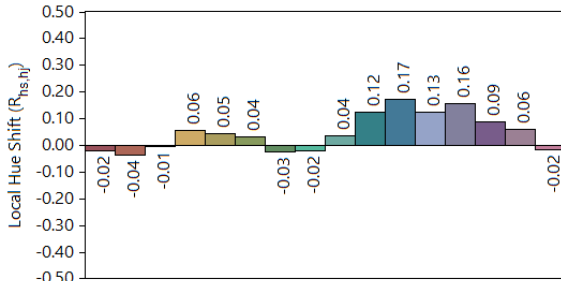
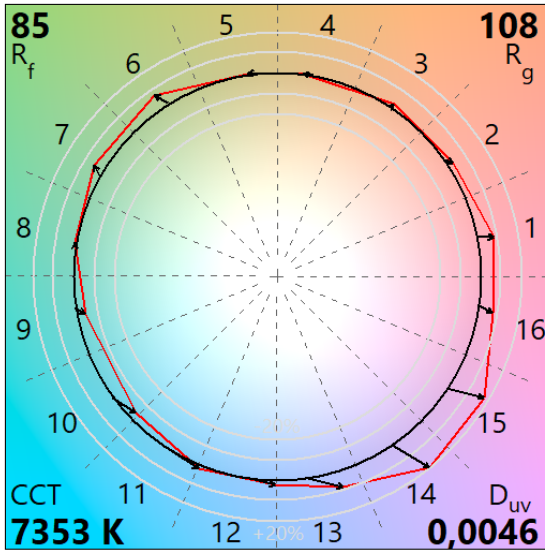
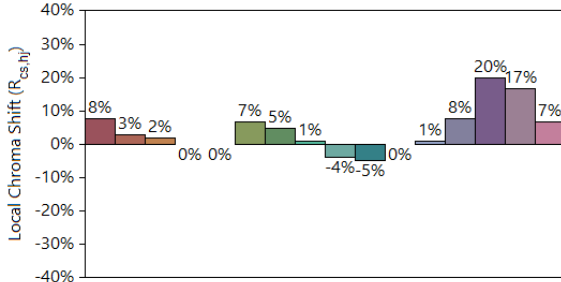
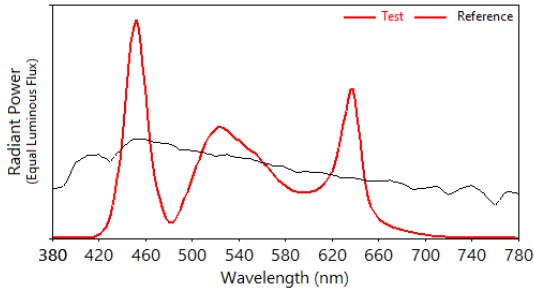
IES TM-30-18 Color Rendition Report

Source: Max FLUX - 7500 K

Manufacturer: CLAY PAKY

Date: 01/12/2023

Model: RHAPSODYA



Notes:

x 0,3003
y 0,3190
u' 0,1929
v' 0,4610

CIE 13.3-1995
(CRI)
 R_a 84
 R_g 31

Colors are for visual orientation purposes only.

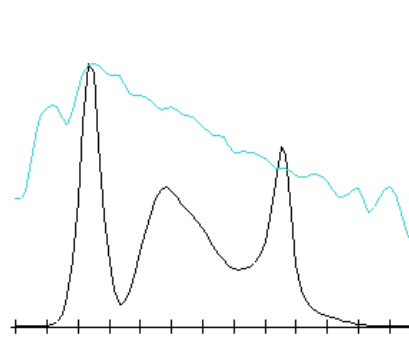
TLCI-2012: MAX FLUX - 7500K

Direct spectrum input : CCT = D7353 (+0.3)

TLCI-2012 : 82 (D7353)



Sector	Lightness	Chroma	Hue
R	---	--	0
R/Y	0	0	0
Y	0	-	-
Y/G	0	--	0
G	-	--	0
G/C	0	--	+++
C	0	-	+
C/B	0	0	0
B	0	--	-
B/M	0	-	-
M	0	-	-
M/R	--	--	-



TM-30: MAX CRI - 8000K

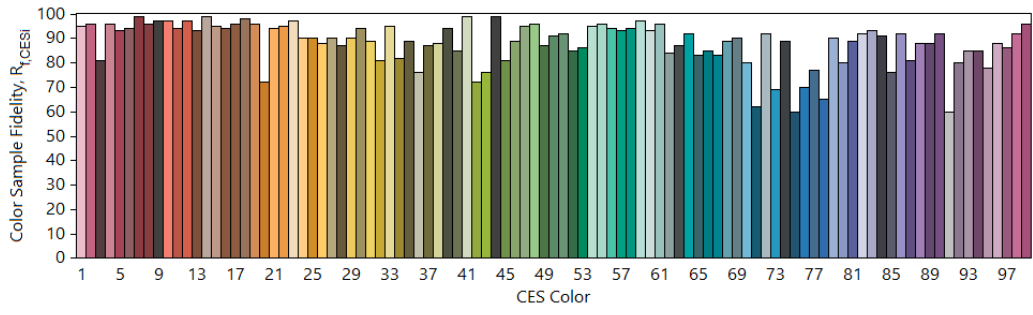
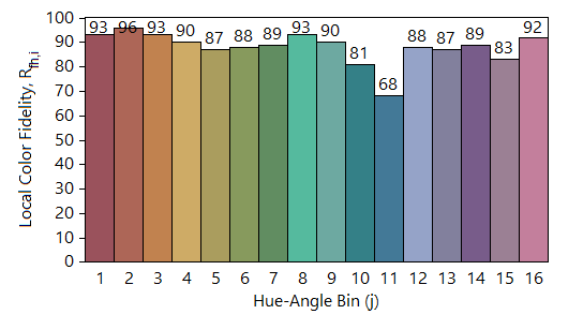
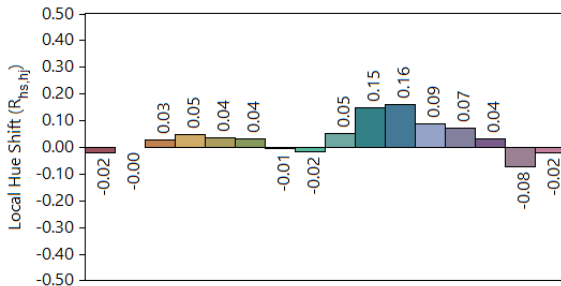
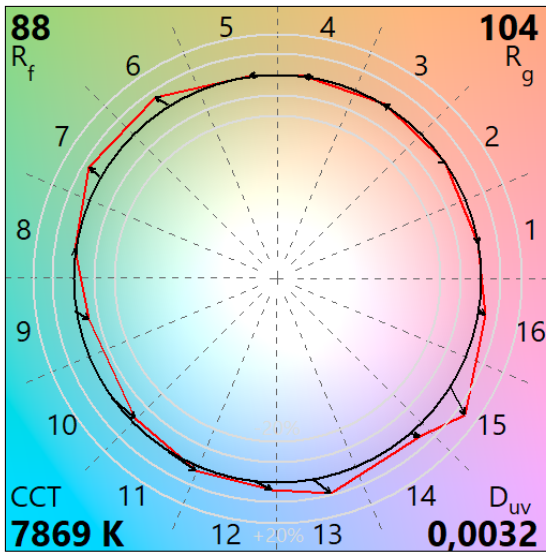
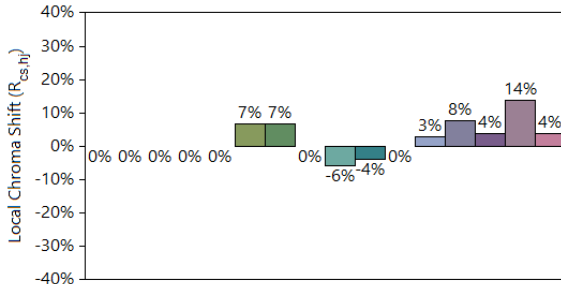
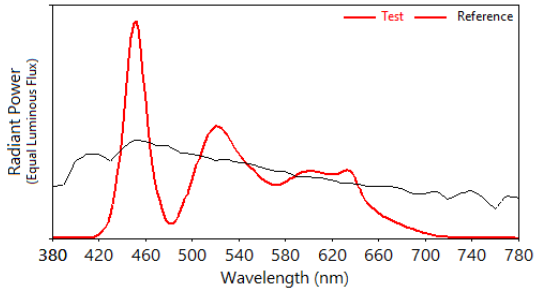
IES TM-30-18 Color Rendition Report

Source: Max CRI - 8000 K

Manufacturer: CLAY PAKY

Date: 01/12/2023

Model: RHAPSODYA



Notes:

x 0,2950
y 0,3107
u' 0,1922
v' 0,4556

CIE 13.3-1995
(CRI)
R_a 91
R_g 93

Colors are for visual orientation purposes only.

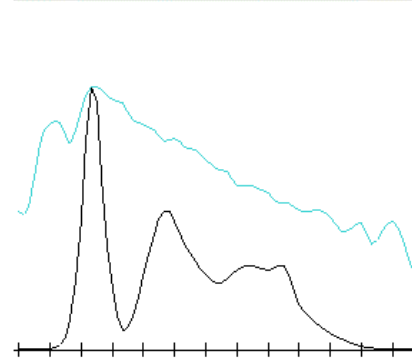
TLCI-2012: Max CRI - 8000K

Direct spectrum input : CCT = D7869 (0.0)

TLCI-2012 : 88 (D7869)



Sector	Lightness	Chroma	Hue
R	0	0	0
R/Y	0	0	0
Y	0	-	0
Y/G	0	-	0
G	-	--	0
G/C	0	--	+++
C	0	-	++
C/B	0	0	++
B	0	--	0
B/M	0	-	++
M	0	0	++
M/R	0	0	+



TM-30: MAX FLUX - 8000K

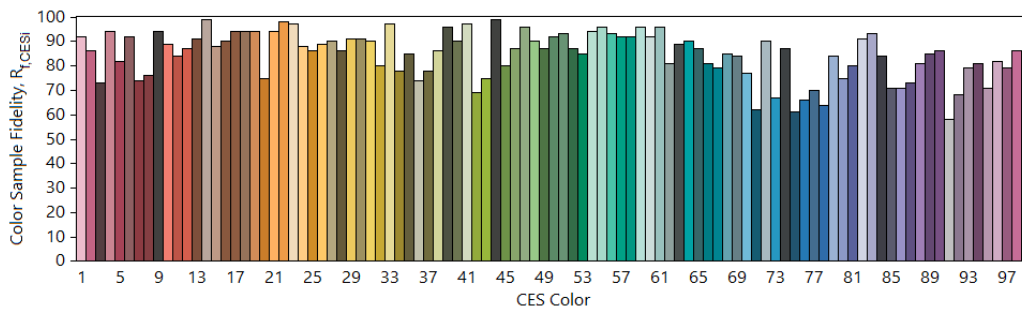
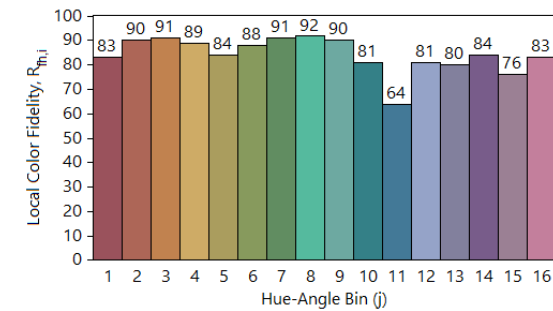
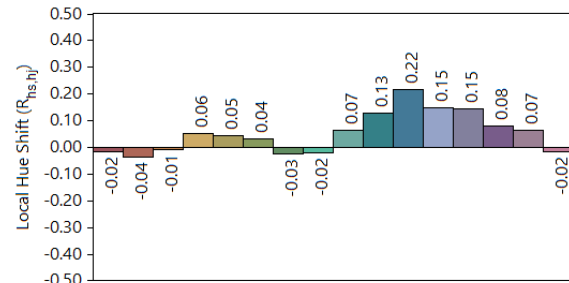
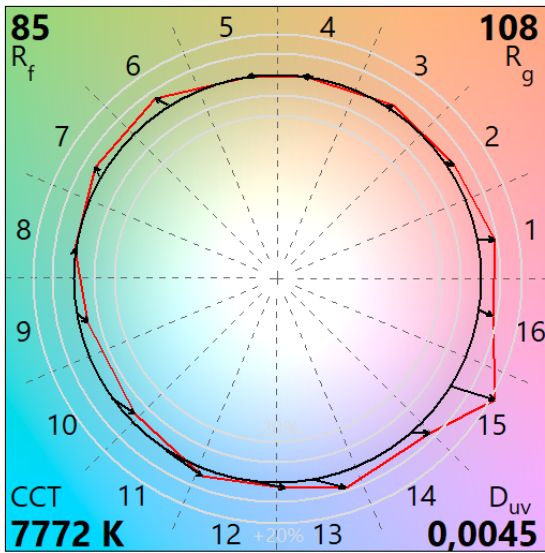
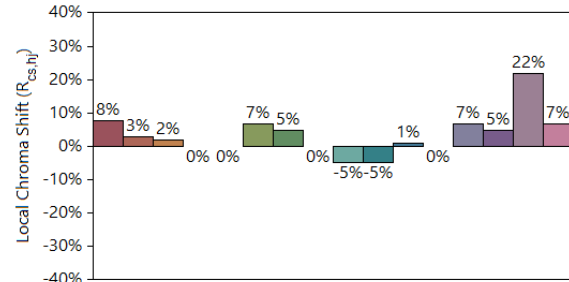
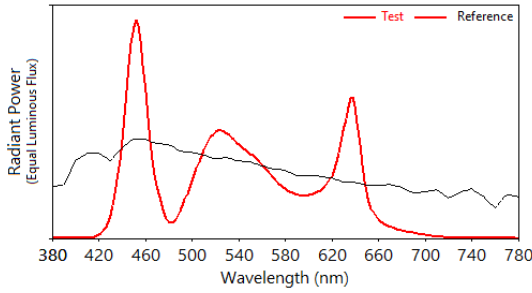
IES TM-30-18 Color Rendition Report

Source: Max FLUX - 8000 K

Manufacturer: CLAY PAKY

Date: 01/12/2023

Model: RHAPSODYA



Notes:

x 0,2955
y 0,3137
u' 0,1915
v' 0,4573

CIE 13.3-1995
(CRI)
Ra 84
Rg 29

Colors are for visual orientation purposes only.

TLCI-2012: MAX FLUX - 8000K

Direct spectrum input : CCT = D7772 (+0.3)

TLCI-2012 : 82 (D7772)



Sector	Lightness	Chroma	Hue
R	---	--	0
R/Y	0	0	0
Y	0	-	-
Y/G	0	--	0
G	-	--	0
G/C	0	--	+++
C	0	-	+
C/B	0	0	0
B	0	--	-
B/M	0	-	-
M	0	-	-
M/R	--	--	-

