

PHOTOMETRIC TEST REPORT



FIXTURE DATA

Manufacturer: Clay Paky s.r.l.
Fixture model: Arolla Profile MP
Date: 2023-02-21

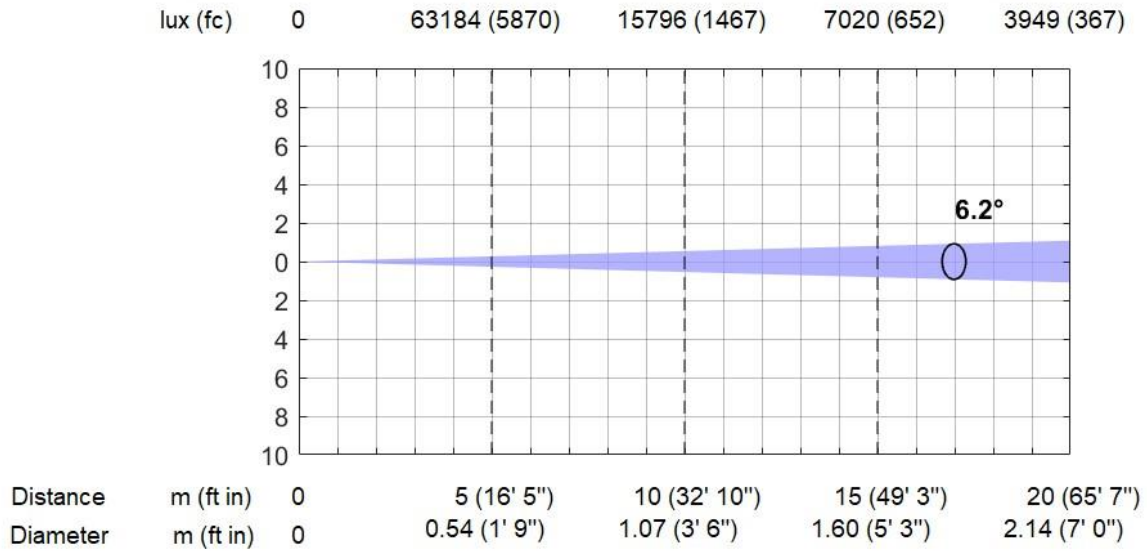
TABLE OF CONTENTS:

➤ FAN MODE: AUTO. ZOOM: MIN	3
➤ FAN MODE: AUTO. ZOOM: 12°	4
➤ FAN MODE: AUTO. ZOOM: MAX	5
➤ FAN MODE: SILENT. ZOOM: MIN	6
➤ FAN MODE: SILENT. ZOOM: 12°	7
➤ FAN MODE: SILENT. ZOOM: MAX	8
➤ FAN MODE: THEATRE. ZOOM: MIN	9
➤ FAN MODE: THEATRE. ZOOM: 12°	10
➤ FAN MODE: THEATRE. ZOOM: MAX	11
➤ FAN MODE: CONSTANT. ZOOM: MIN	12
➤ FAN MODE: CONSTANT. ZOOM: 12°	13
➤ FAN MODE: CONSTANT. ZOOM: MAX	14
➤ TM-30	15
➤ TM-30: WITH H. M. GREEN	16
➤ TLCI-2012: WITH H. M. GREEN	17

FAN MODE: AUTO. ZOOM: MIN

Auto Fan Mode, Min. Zoom (6.2°)

Total Output: 13859 lumens

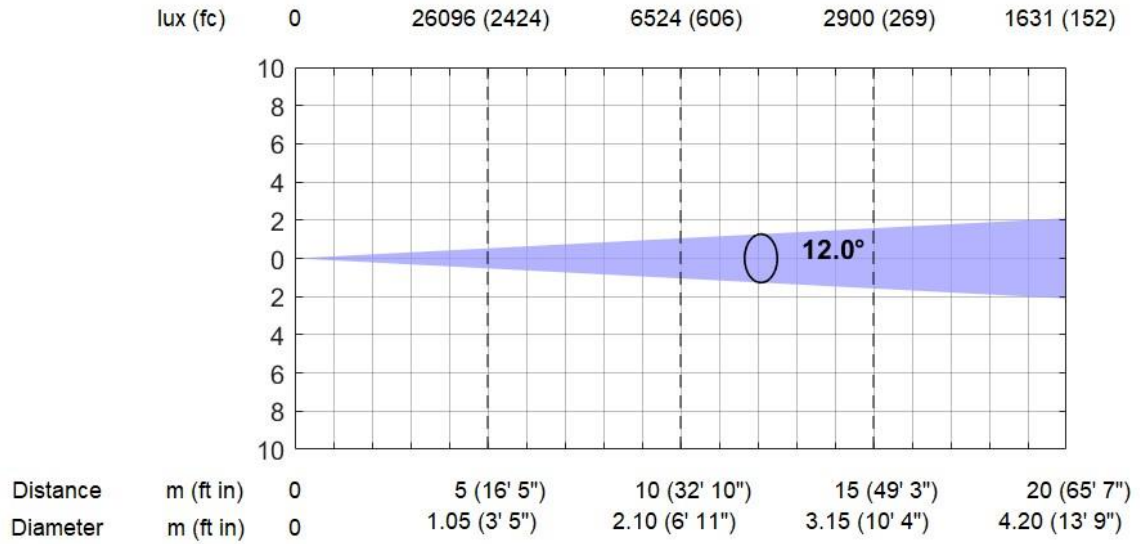


* Lumen values detected with integrating sphere. Measurements taken 15 minutes after the fixture was turned on.

FAN MODE: AUTO. ZOOM: 12°

Auto Fan Mode @12° (12°)

Total Output: 20641 lumens

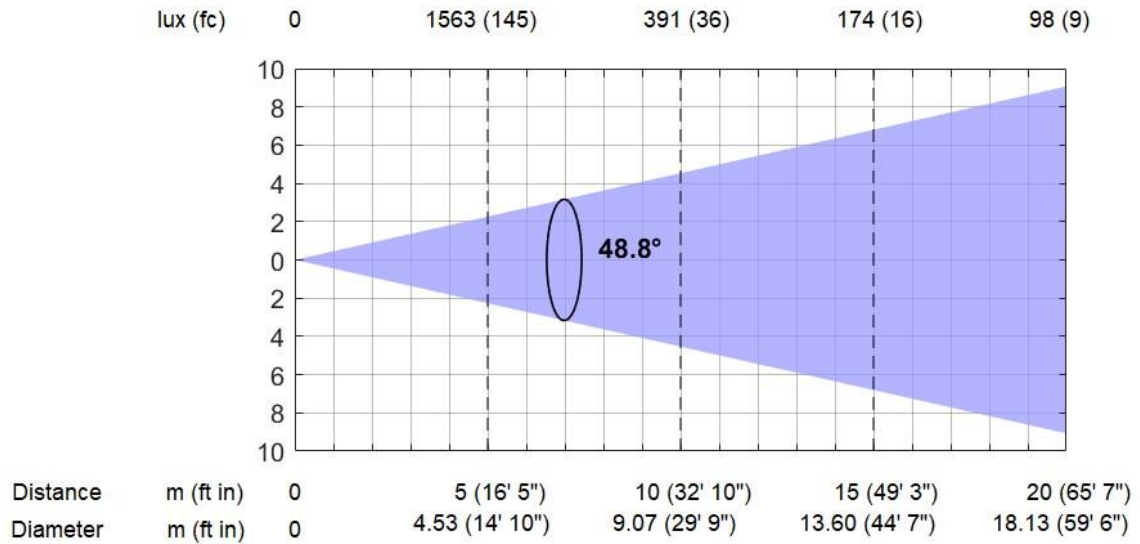


* Lumen values detected with integrating sphere. Measurements taken 15 minutes after the fixture was turned on.

FAN MODE: AUTO. ZOOM: MAX

Auto Fan Mode, Max. Zoom (48.8°)

Total Output: 22054 lumens

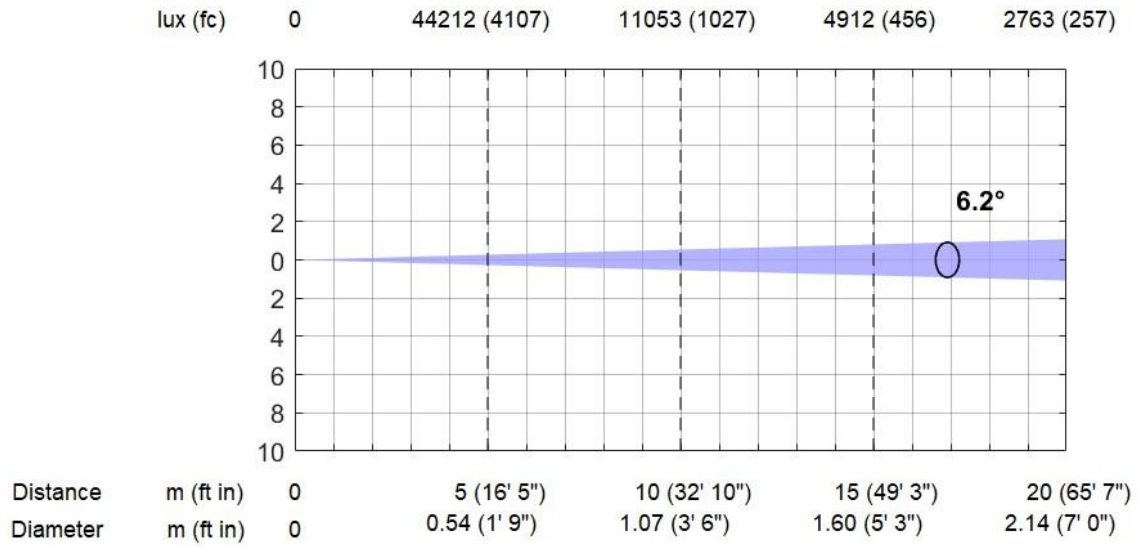


* Lumen values detected with integrating sphere. Measurements taken 15 minutes after the fixture was turned on.

FAN MODE: SILENT. ZOOM: MIN

SLN Fan Mode, Min. Zoom (6.2°)

Total Output: 9737 lumens

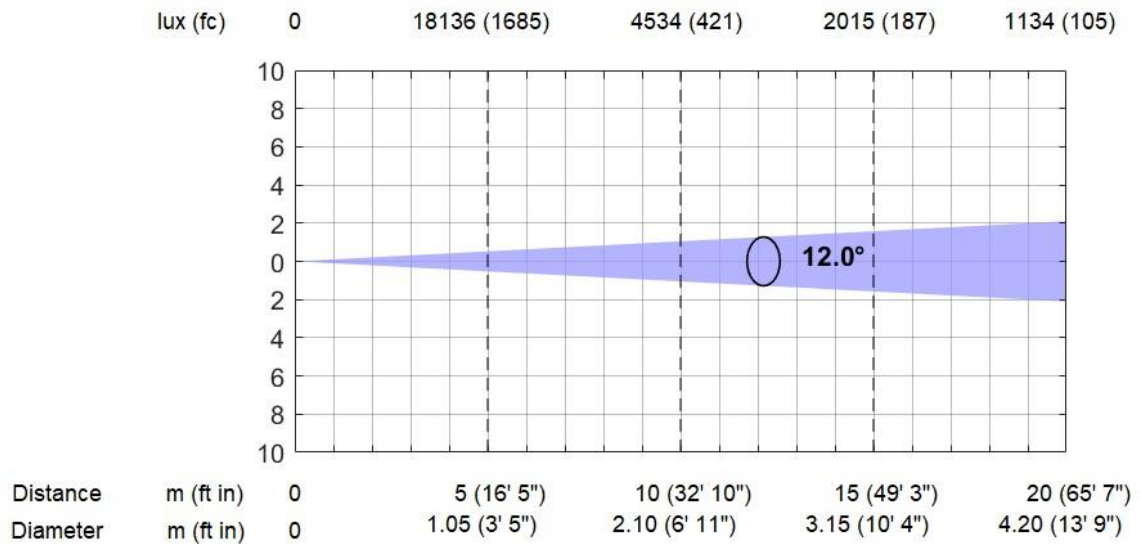


* Lumen values detected with integrating sphere. Measurements taken 15 minutes after the fixture was turned on.

FAN MODE: SILENT. ZOOM: 12°

SLN Fan Mode @12° (12°)

Total Output: 14401 lumens

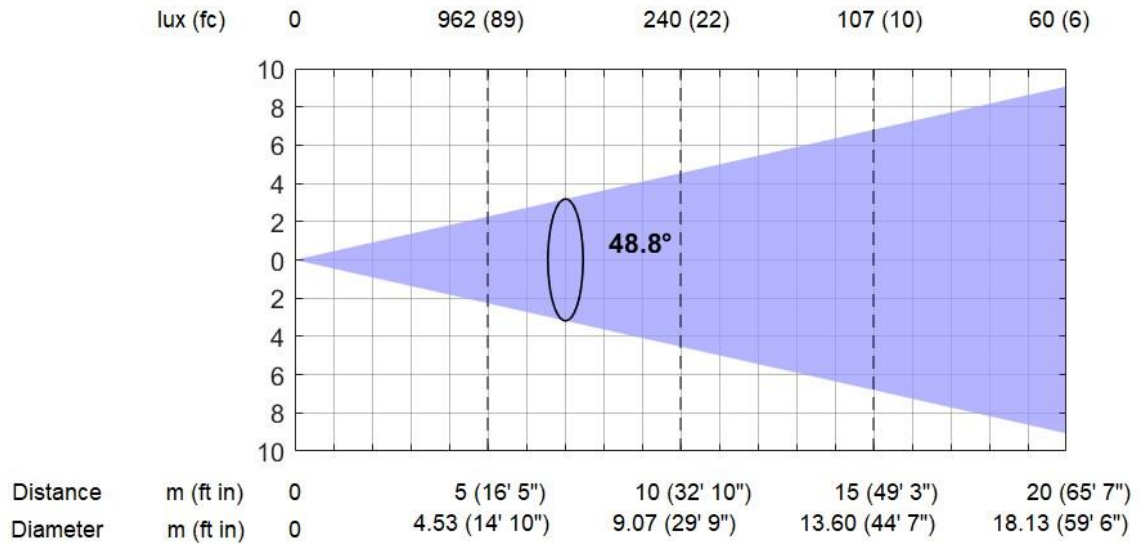


* Lumen values detected with integrating sphere. Measurements taken 15 minutes after the fixture was turned on.

FAN MODE: SILENT. ZOOM: MAX

SLN Fan Mode, Max. Zoom (48.8°)

Total Output: 14134 lumens

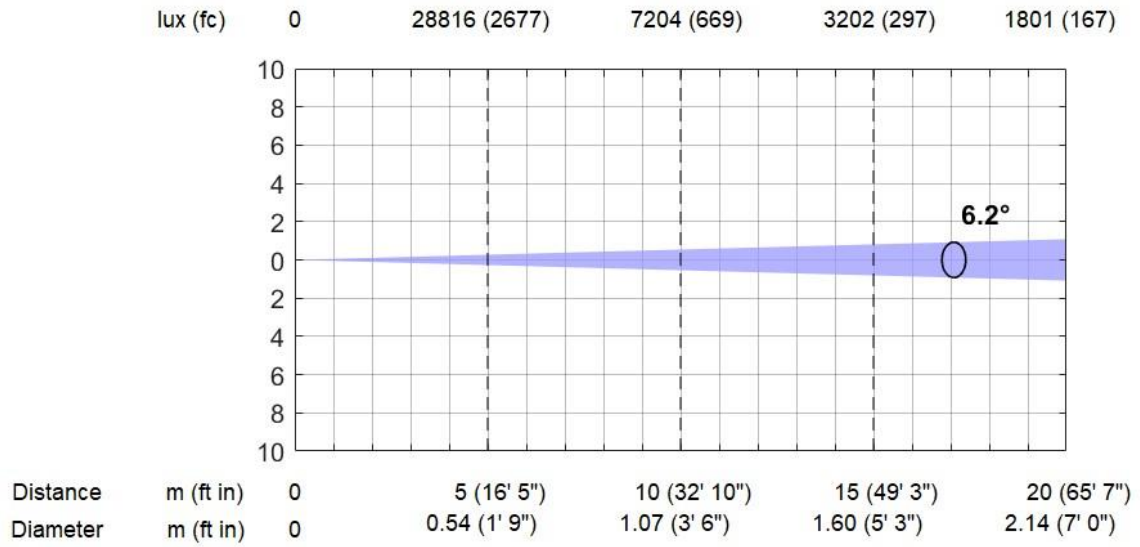


* Lumen values detected with integrating sphere. Measurements taken 15 minutes after the fixture was turned on.

FAN MODE: THEATRE. ZOOM: MIN

Theatre Fan Mode, Min. Zoom (6.2°)

Total Output: 6326 lumens

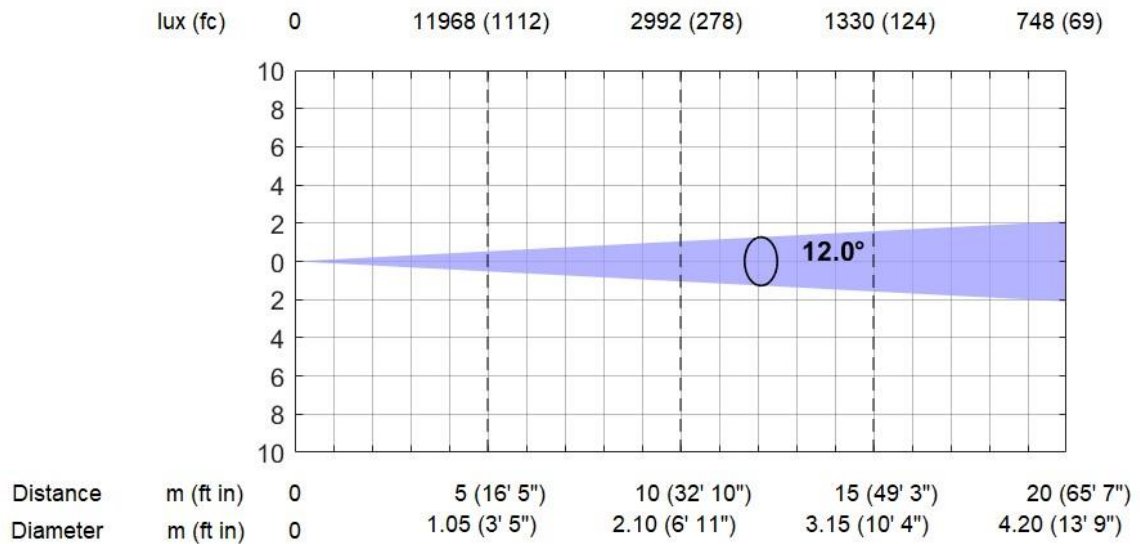


* Lumen values detected with integrating sphere. Measurements taken 15 minutes after the fixture was turned on.

FAN MODE: THEATRE. ZOOM: 12°

Theatre Fan Mode @12° (12°)

Total Output: 9515 lumens

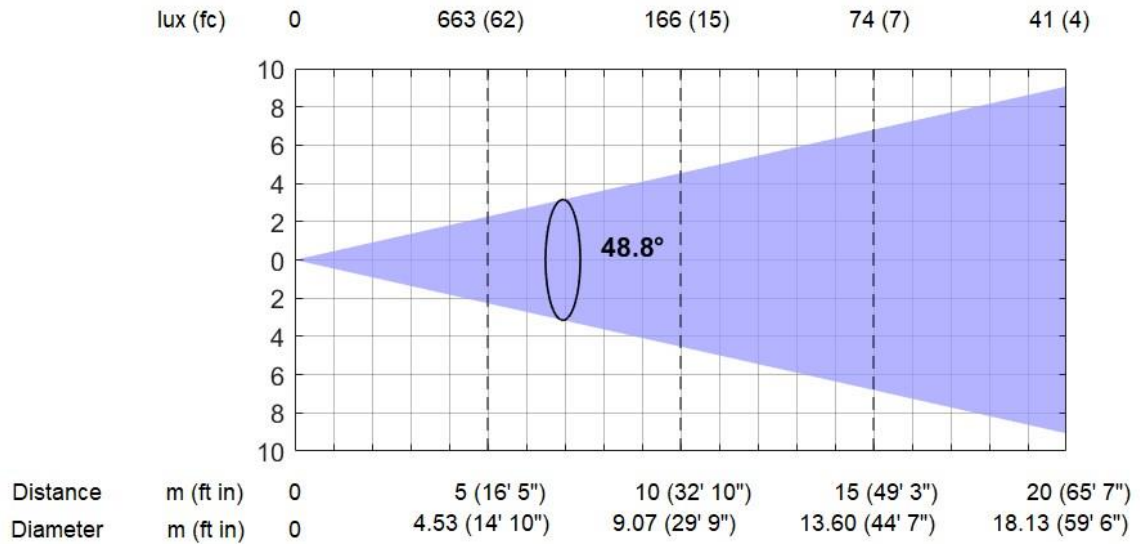


* Lumen values detected with integrating sphere. Measurements taken 15 minutes after the fixture was turned on.

FAN MODE: THEATRE. ZOOM: MAX

Theatre Fan Mode, Max. Zoom (48.8°)

Total Output: 9634 lumens

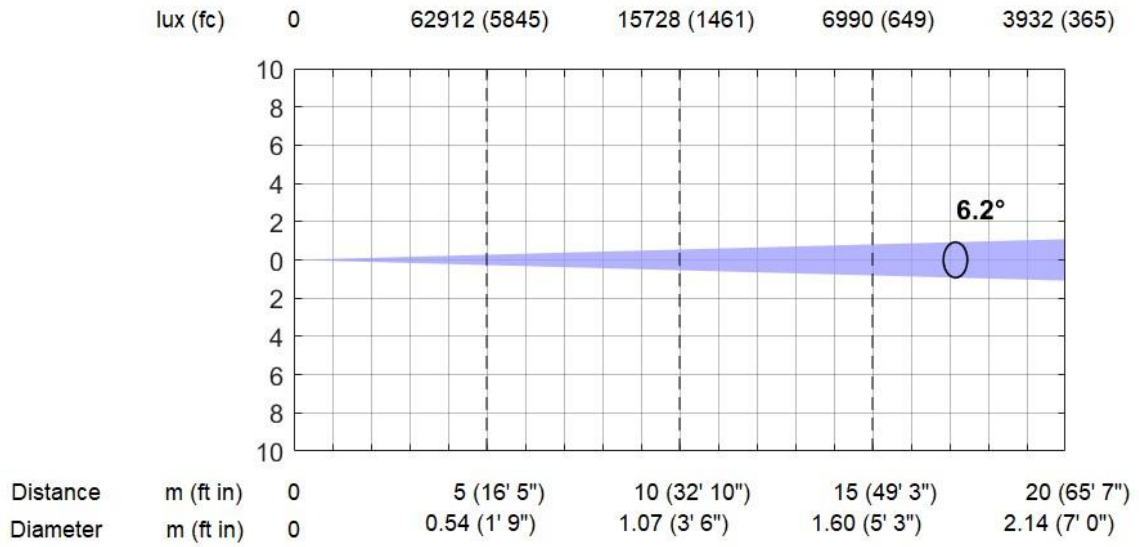


* Lumen values detected with integrating sphere. Measurements taken 15 minutes after the fixture was turned on.

FAN MODE: CONSTANT. ZOOM: MIN

Constant Fan Mode, Min. Zoom (6.2°)

Total Output: 13824 lumens

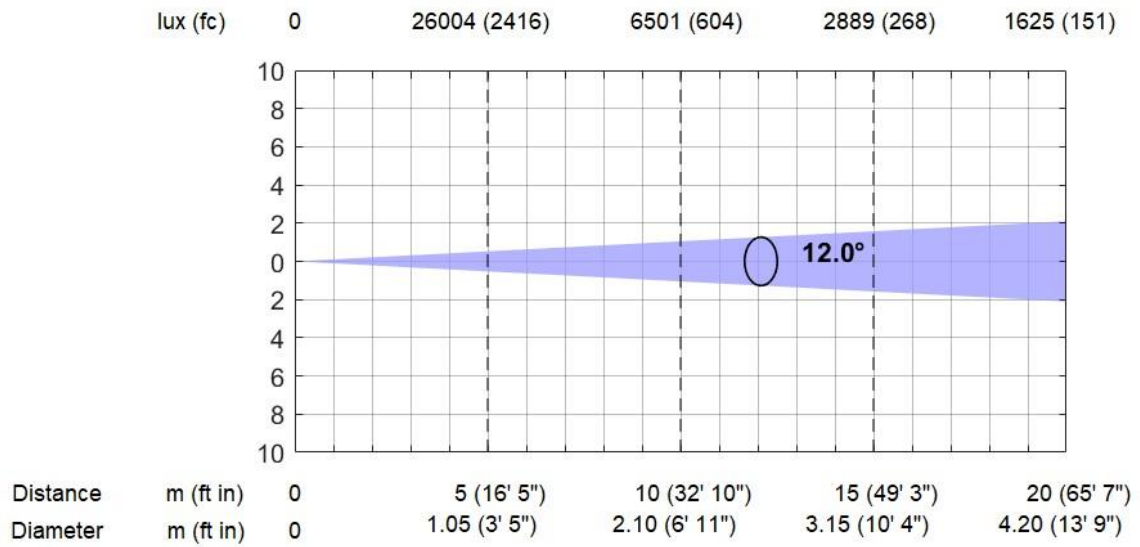


* Lumen values detected with integrating sphere. Measurements taken 15 minutes after the fixture was turned on.

FAN MODE: CONSTANT. ZOOM: 12°

Constant Fan Mode @12° (12°)

Total Output: 20576 lumens

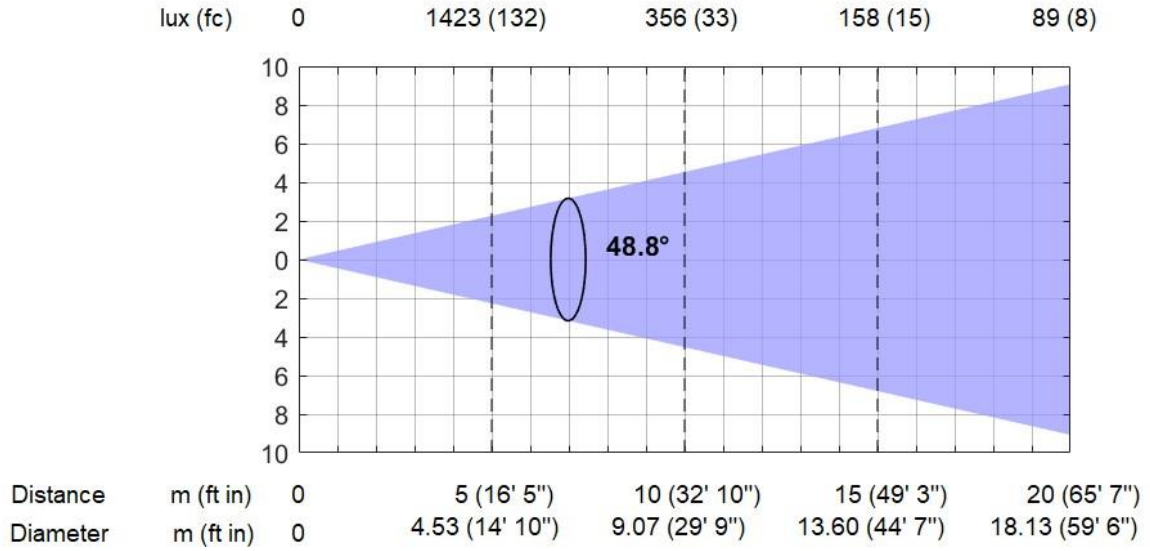


* Lumen values detected with integrating sphere. Measurements taken 15 minutes after the fixture was turned on.

FAN MODE: CONSTANT. ZOOM: MAX

Constant Fan Mode, Max. Zoom (48.8°)

Total Output: 20590 lumens



* Lumen values detected with integrating sphere. Measurements taken 15 minutes after the fixture was turned on.

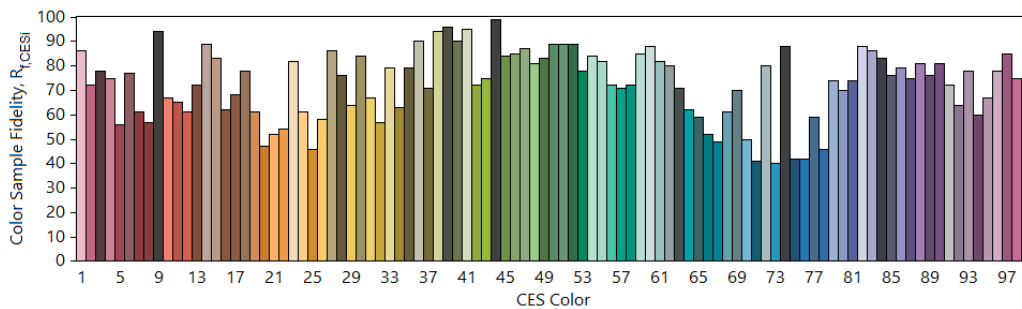
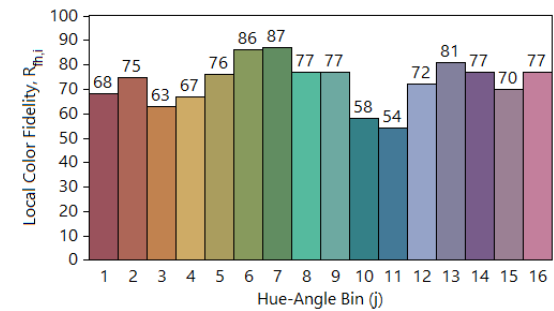
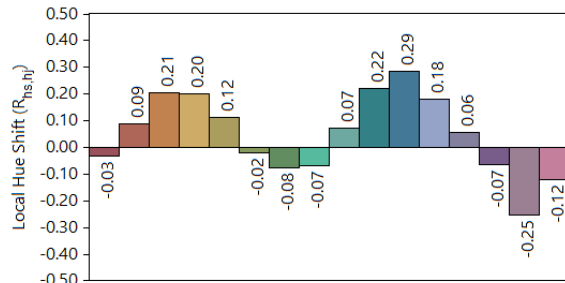
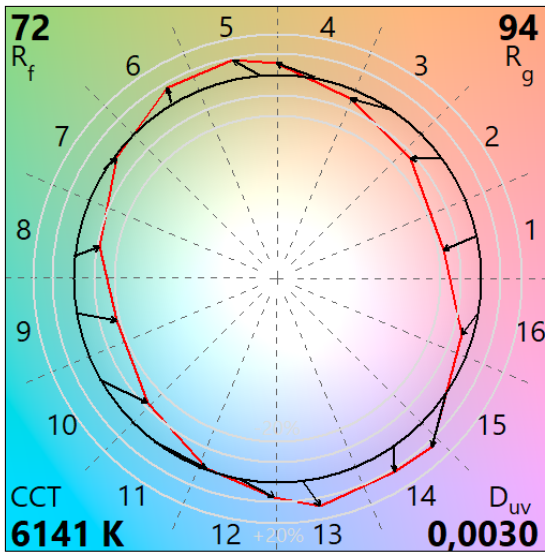
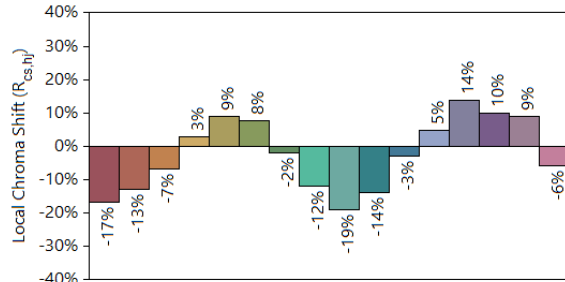
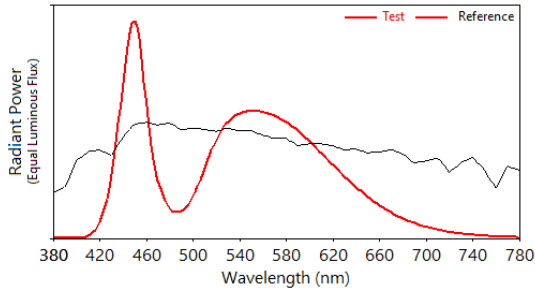
IES TM-30-18 Color Rendition Report

Source: AROLLA PROFILE MP

Manufacturer: CLAY PAKY S.p.A.

Date: 16.02.2021

Model:



Notes:

x 0,3190
y 0,3347
u' 0,2001
v' 0,4723

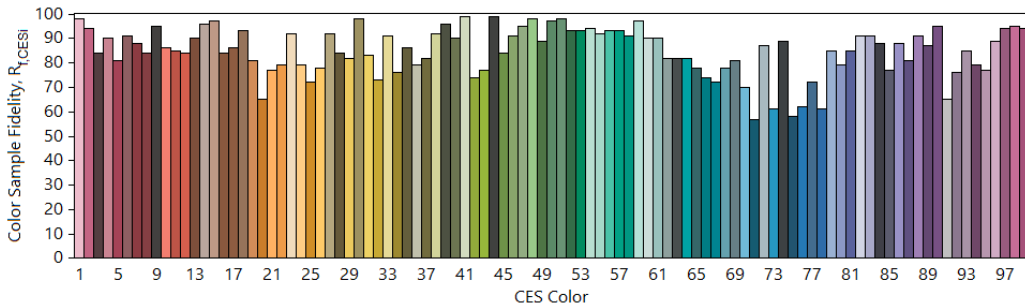
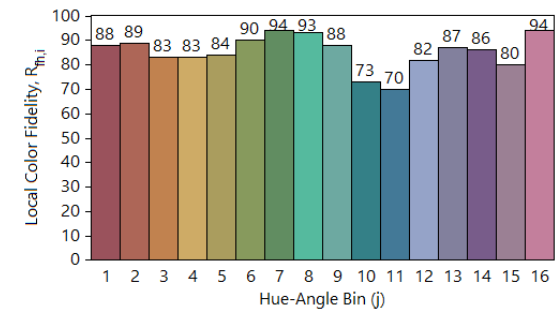
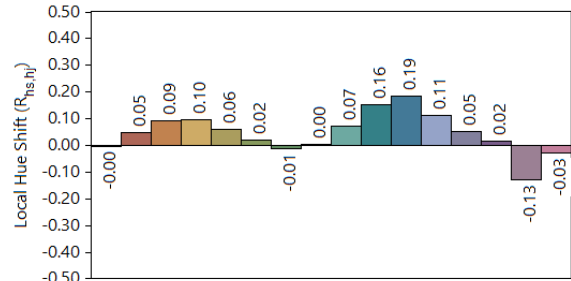
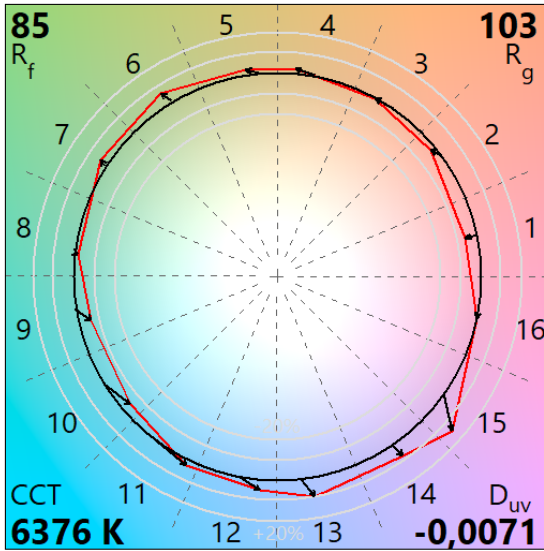
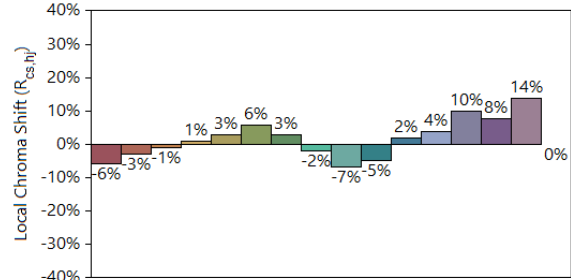
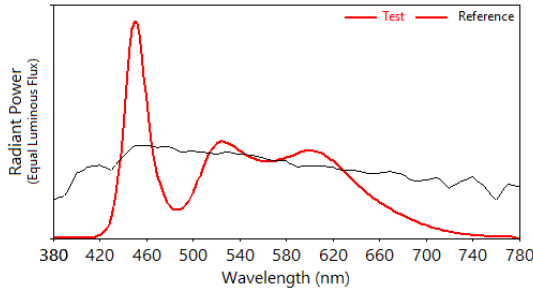
CIE 13.3-1995
(CRI)
R_a 72
R_g -24

Colors are for visual orientation purposes only.

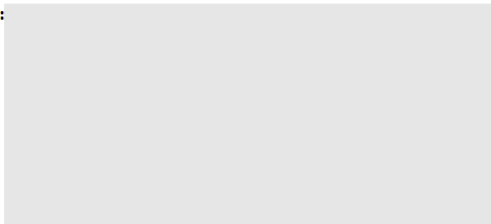
TM-30: WITH H. M. GREEN

IES TM-30-18 Color Rendition Report

Source: Arolla Profile MP - H.M. Green Manufacturer: CLAY PAKY
 Date: 21.02.2023 Model: AROLLA Profile MP



Notes:



x 0,3169
 y 0,3137
 u' 0,2068
 v' 0,4605

CIE 13.3-1995
 (CRI)
 R_a 90
 R_g 63

Colors are for visual orientation purposes only.

TLCI-2012: WITH H. M. GREEN

Direct spectrum input : CCT = D6376 (-1.9)

TLCI-2012 : 83 (D6376)



Sector	Lightness	Chroma	Hue
R	++	+	0
R/Y	0	0	--
Y	0	-	--
Y/G	0	-	0
G	-	-	+
G/C	0	0	+++
C	+	0	0
C/B	+	0	-
B	0	--	-
B/M	+	-	+++
M	+	0	+++
M/R	++	0	+++

