

PHOTOMETRIC TEST REPORT



FIXTURE DATA

Manufacturer: Clay Paky s.r.l.
Fixture model: MINI-B WW
Date: 2025-07-08

TABLE OF CONTENTS:

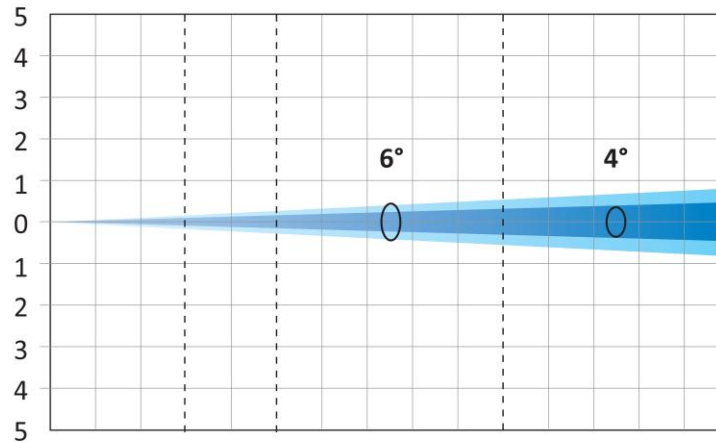
➔ FAN MODE: AUTO - MINIMUM ZOOM	3
➔ FAN MODE: AUTO - MAX ZOOM	4
➔ FAN MODE: CONSTANT - MINIMUM ZOOM	5
➔ FAN MODE: CONSTANT - MAXIMUM ZOOM	6
➔ FAN MODE: SILENT - MINIMUM ZOOM	7
➔ FAN MODE: SILENT - MAXIMUM ZOOM	8
➔ TM-30: CTO 4%	9
➔ TLCI-2012: CTO 4%	10
➔ TM-30: CTO 100%	11
➔ TLCI-2012: CTO 100%	12

FAN MODE: AUTO - MINIMUM ZOOM

Minimum Zoom (6° 10% - 4° 50%)

Total Output: 2150 lumens (Full colors - AUTO mode)

Red (AUTO mode)	lux (fc)	0	8747 (813)	3149 (293)	787 (73.1)	350 (32.5)
Green (AUTO mode)	lux (fc)	0	16811 (1562)	6052 (562)	1513 (141)	672 (62.5)
Blue (AUTO mode)	lux (fc)	0	2253 (209)	811 (75.3)	203 (18.8)	90 (8.37)
White (AUTO mode)	lux (fc)	0	26433 (2456)	9516 (884)	2379 (221)	1057 (98.2)
Full colors (AUTO mode)	lux (fc)	0	46181 (4290)	16625 (1544)	4156 (386)	1847 (172)



Distance	m (ft in)	0	3 (9' 10")	5 (16' 5")	10 (32' 10")	15 (49' 3")
Diameter 10%	m (ft in)	0	0.34 (1' 1")	0.56 (1' 10")	1.12 (3' 8")	1.68 (5' 6")
Diameter 50%	m (ft in)	0	0.23 (0' 9")	0.38 (1' 3")	0.75 (2' 6")	1.13 (3' 8")

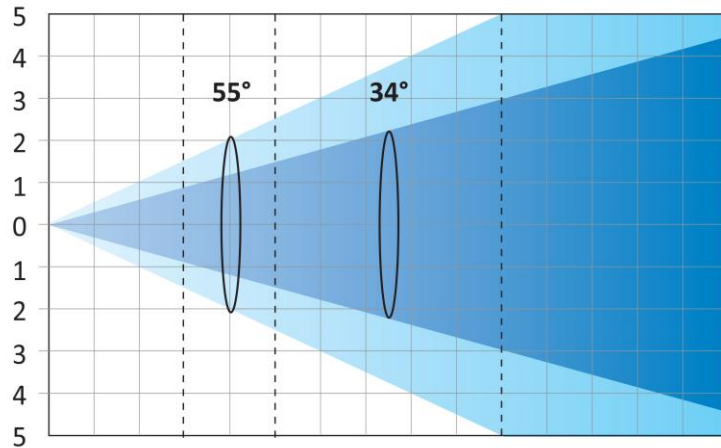
*Lumen values detected with integrating sphere. Measurements taken 15 minutes after the fixture was turned on.

FAN MODE: AUTO - MAX ZOOM

Maximum Zoom (55° 10% - 34° 50%)

Total Output: 3420 lumens (Full colors - AUTO mode)

Red (AUTO mode)	lux (fc)	0	199 (18.5)	72 (6.66)	18 (1.66)	8 (0.74)
Green (AUTO mode)	lux (fc)	0	396 (36.8)	143 (13.2)	36 (3.31)	16 (1.47)
Blue (AUTO mode)	lux (fc)	0	56 (5.2)	20 (1.87)	5 (0.47)	2 (0.21)
White (AUTO mode)	lux (fc)	0	555 (51.6)	200 (18.6)	50 (4.64)	22 (2.06)
Full colors (AUTO mode)	lux (fc)	0	1053 (97.8)	379 (35.2)	95 (8.8)	42 (3.91)



Distance	m (ft in)	0	3 (9' 10")	5 (16' 5")	10 (32' 10")	15 (49' 3")
Diameter 10%	m (ft in)	0	3.03 (9' 11")	5.05 (16' 7")	10.10 (33' 2")	15.15 (49' 9")
Diameter 50%	m (ft in)	0	1.82 (6' 0")	3.04 (10' 0")	6.08 (19' 11")	9.11 (29' 11")

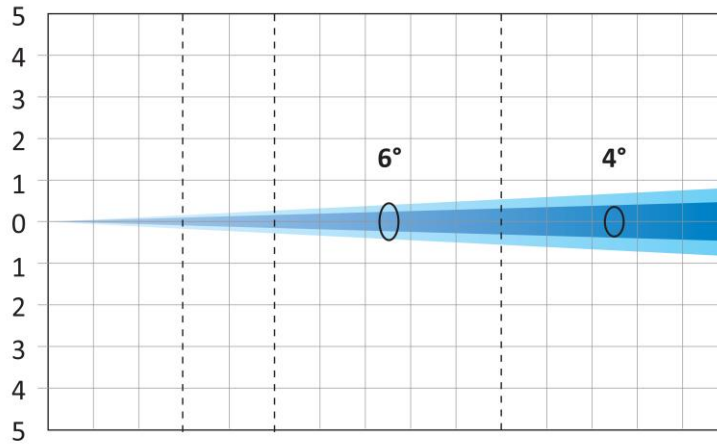
*Lumen values detected with integrating sphere. Measurements taken 15 minutes after the fixture was turned on.

FAN MODE: CONSTANT - MINIMUM ZOOM

Minimum Zoom (6° 10% - 4° 50%)

Total Output: 2150 lumens (Full colors - CONSTANT mode)

Full colors (CONSTANT mode) lux (fc) 0 46589 (4328) 16772 (1558) 4193 (390) 1864 (173)



Distance	m	(ft in)	0	3 (9' 10")	5 (16' 5")	10 (32' 10")	15 (49' 3")
Diameter 10%	m	(ft in)	0	0.34 (1' 1")	0.56 (1' 10")	1.12 (3' 8")	1.68 (5' 6")
Diameter 50%	m	(ft in)	0	0.23 (0' 9")	0.38 (1' 3")	0.75 (2' 6")	1.13 (3' 8")

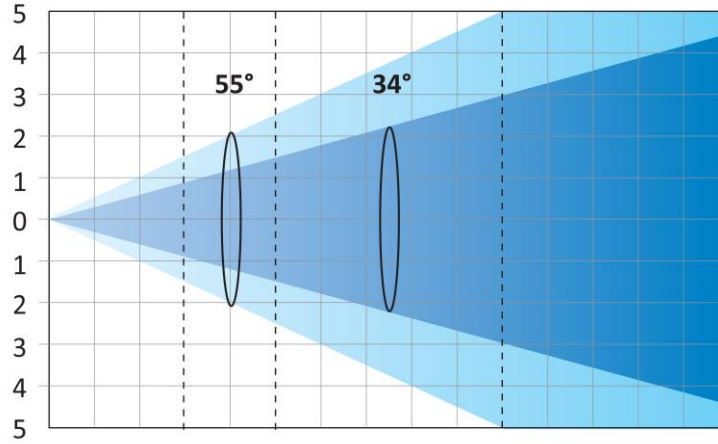
*Lumen values detected with integrating sphere. Measurements taken 15 minutes after the fixture was turned on.

FAN MODE: CONSTANT - MAXIMUM ZOOM

Maximum Zoom (55° 10% - 34° 50%)

Total Output: 3420 lumens (Full colors - CONSTANT mode)

Full colors (CONSTANT mode) lux (fc) 0 1058 (98.3) 381 (35.4) 95 (8.85) 42 (3.93)



Distance	m (ft in)	0	3 (9' 10")	5 (16' 5")	10 (32' 10")	15 (49' 3")
Diameter 10%	m (ft in)	0	3.03 (9' 11")	5.05 (16' 7")	10.10 (33' 2")	15.15 (49' 9")
Diameter 50%	m (ft in)	0	1.82 (6' 0")	3.04 (10' 0")	6.08 (19' 11")	9.11 (29' 11")

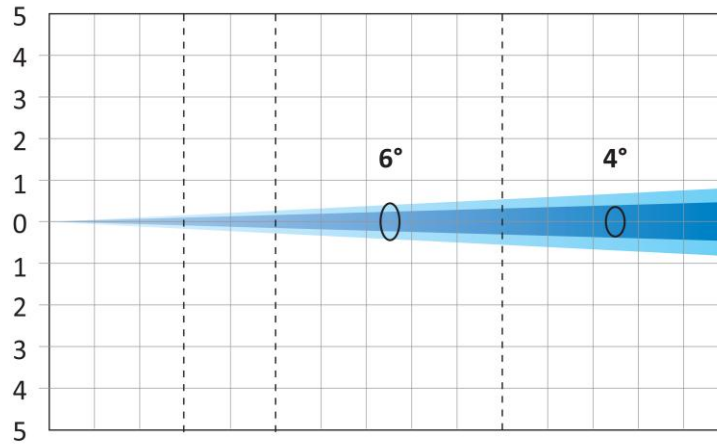
*Lumen values detected with integrating sphere. Measurements taken 15 minutes after the fixture was turned on.

FAN MODE: SILENT - MINIMUM ZOOM

Minimum Zoom (6° 10% - 4° 50%)

Total Output: 1840 lumens (Full colors - SLN mode)

Full colors (SLN mode) lux (fc) 0 40497 (3762) 14579 (1354) 3645 (339) 1620 (150)



Distance	m (ft in)	0	3 (9' 10")	5 (16' 5")	10 (32' 10")	15 (49' 3")
Diameter 10%	m (ft in)	0	0.34 (1' 1")	0.56 (1' 10")	1.12 (3' 8")	1.68 (5' 6")
Diameter 50%	m (ft in)	0	0.23 (0' 9")	0.38 (1' 3")	0.75 (2' 6")	1.13 (3' 8")

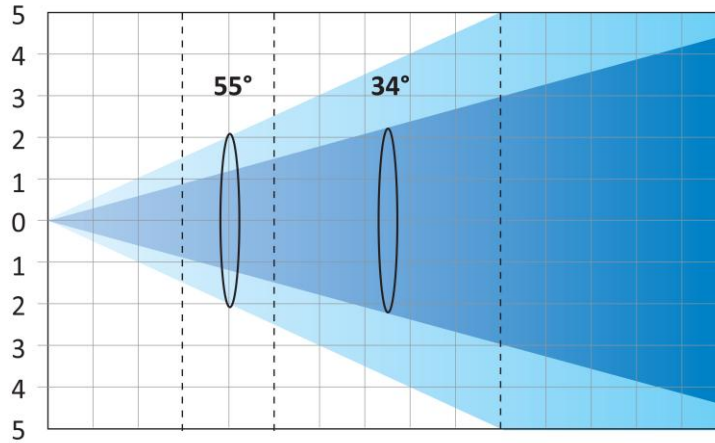
*Lumen values detected with integrating sphere. Measurements taken 15 minutes after the fixture was turned on.

FAN MODE: SILENT - MAXIUM ZOOM

Maximum Zoom (55° 10% - 34° 50%)

Total Output: 3000 lumens (Full colors - SLN mode)

Full colors (SLN mode) lux (fc) 0 941 (87.4) 339 (31.5) 85 (7.87) 38 (3.5)



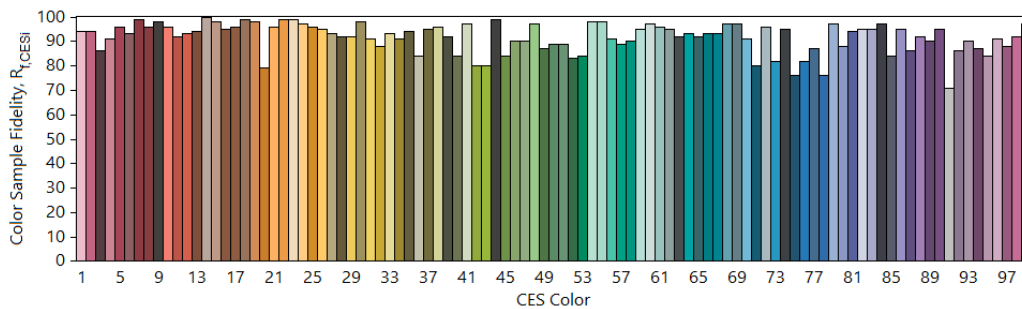
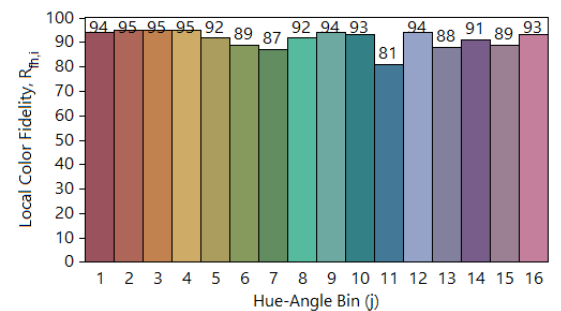
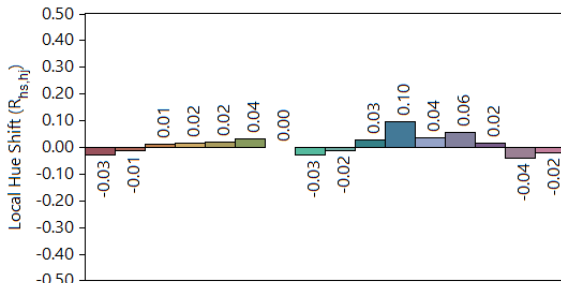
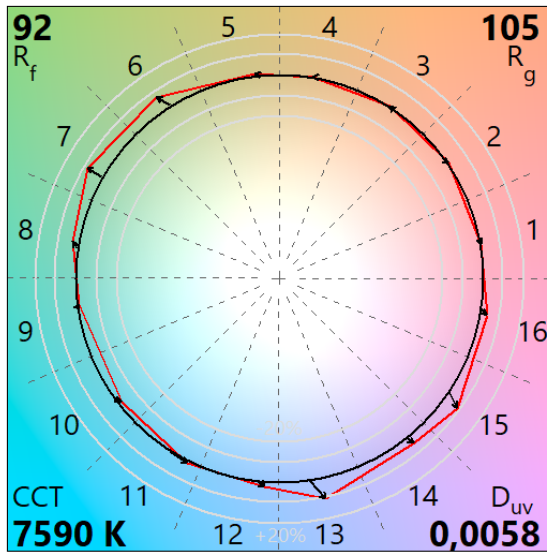
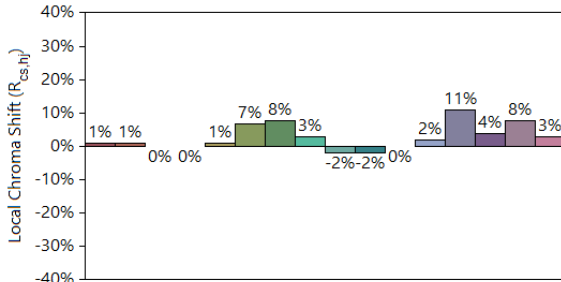
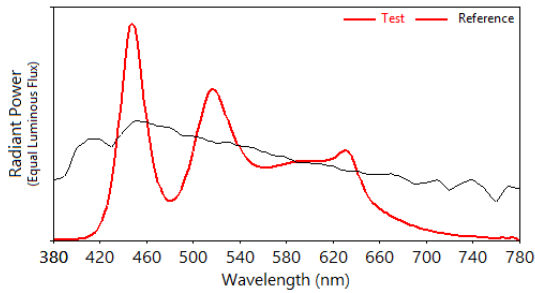
Distance	m (ft in)	0	3 (9' 10")	5 (16' 5")	10 (32' 10")	15 (49' 3")
Diameter 10%	m (ft in)	0	3.03 (9' 11")	5.05 (16' 7")	10.10 (33' 2")	15.15 (49' 9")
Diameter 50%	m (ft in)	0	1.82 (6' 0")	3.04 (10' 0")	6.08 (19' 11")	9.11 (29' 11")

*Lumen values detected with integrating sphere. Measurements taken 15 minutes after the fixture was turned on.

TM-30: CTO 4%

IES TM-30-18 Color Rendition Report

Source: CTO 4% Manufacturer: CLAY PAKY
 Date: 07/07/2025 Model: MINI-B WW



Notes:

x 0,2970
 y 0,3178
 u' 0,1910
 v' 0,4599

CIE 13.3-1995
 (CRI)
 R_a 92
 R_g 93

Colors are for visual orientation purposes only.

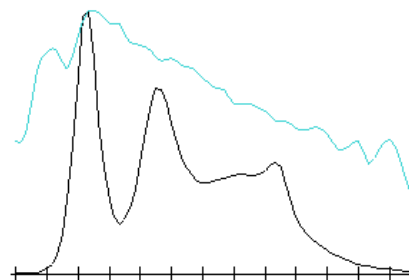
TLCI-2012: CTO 4%

Direct spectrum input : CCT = D7590 (+0.5)

TLCI-2012 : 85 (D7590)



Sector	Lightness	Chroma	Hue
R	0	0	0
R/Y	0	0	0
Y	0	0	0
Y/G	0	0	0
G	0	-	0
G/C	0	--	+++
C	0	0	+++
C/B	-	0	++++
B	0	-	0
B/M	0	0	++
M	0	0	++
M/R	0	0	+



TM-30: CTO 100%

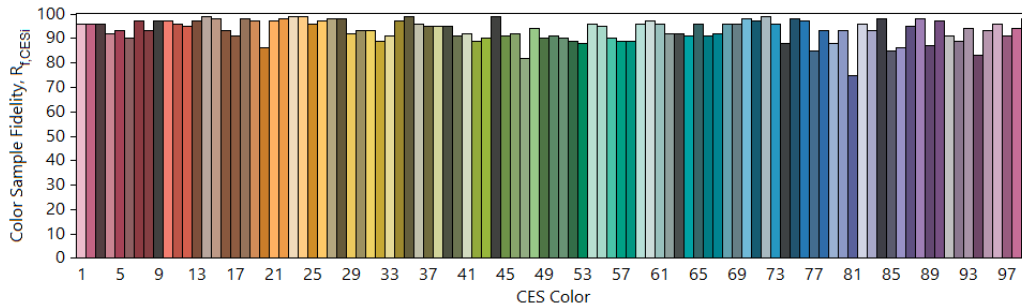
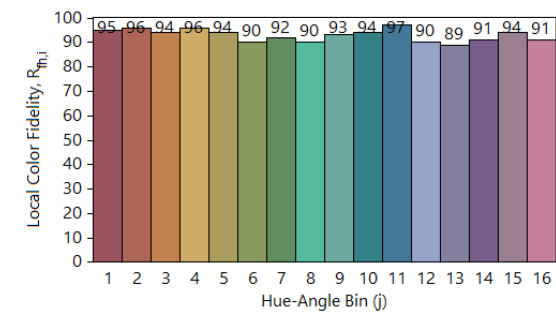
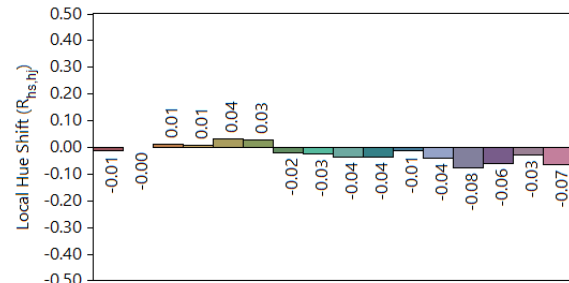
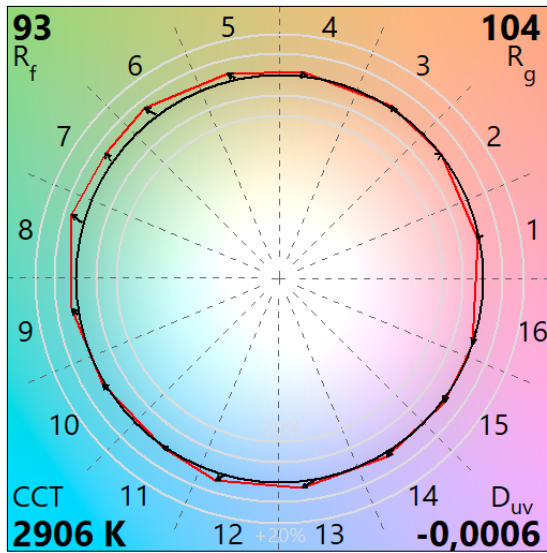
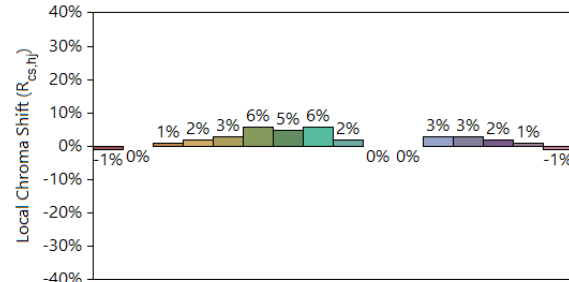
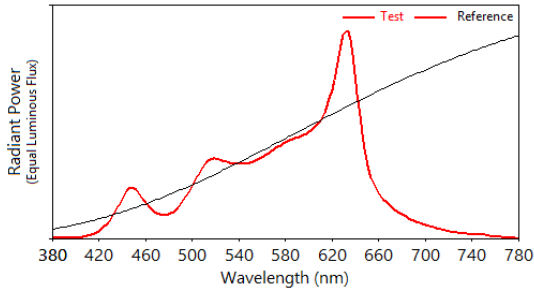
IES TM-30-18 Color Rendition Report

Source: CTO 100%

Manufacturer: CLAY PAKY

Date: 07/07/2025

Model: MINI-B WW



Notes:

x 0,4429
y 0,4045
u' 0,2542
v' 0,5224

CIE 13.3-1995
(CRI)
R_a 96
R_g 93

Colors are for visual orientation purposes only.

TLCI-2012: CTO 100%

Direct spectrum input : CCT = P2906 (-0.1)

TLCI-2012 : 85 (P2906)



Sector	Lightness	Chroma	Hue
R	0	0	0
R/Y	0	0	0
Y	0	0	0
Y/G	0	0	0
G	0	0	0
G/C	0	0	+
C	0	-	+++
C/B	0	+	+++
B	0	0	0
B/M	+	0	++++
M	+	0	+++
M/R	+	0	++

