

PHOTOMETRIC TEST REPORT



FIXTURE DATA

Manufacturer: Clay Paky s.r.l.
Fixture model: HY B-EYE K15
Date: 2020-11-3

TABLE OF CONTENTS:

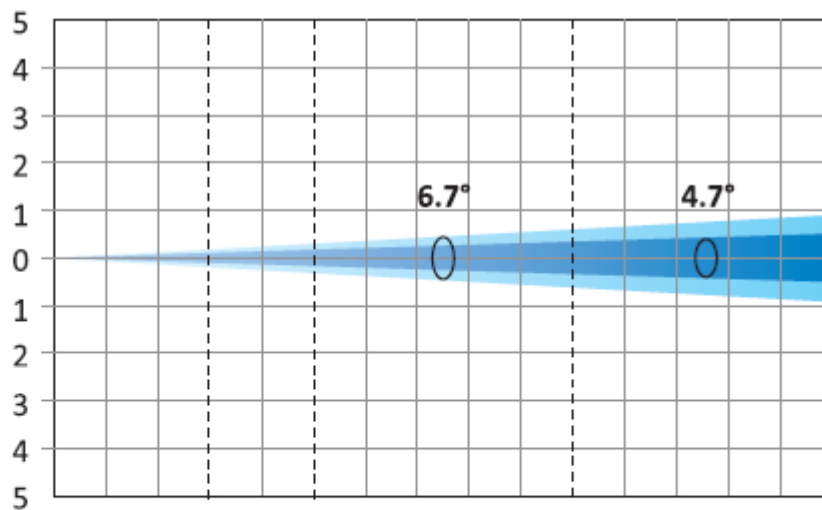
➤ MINIMUM ZOOM	3
➤ MAXIMUM ZOOM	4
➤ MINIMUM ZOOM: ILLUMINANCE DISTRIBUTION	5
➤ MAXIMUM ZOOM: ILLUMINANCE DISTRIBUTION	6
➤ TM-30: WHITE	7
➤ TM-30: CTO 0%	9
➤ TM-30: CTO 4%	10
➤ TLCI-2012: CTO 4%	11
➤ TM-30: CTO 100%	12
➤ TLCI-2012: CTO 100%	13

MINIMUM ZOOM

Minimum Zoom - Fan Speed Mode @ FULL (6.7° 10% - 4.7° 50%)

Total Output: 6500 lumens (FULL COLORS)

Red	lux (fc)	0	22694 (2108)	8170 (759)	2043 (190)	908 (84.3)
Green	lux (fc)	0	37167 (3453)	13380 (1243)	3345 (311)	1487 (138)
Blue	lux (fc)	0	5128 (476)	1846 (171)	462 (42.9)	205 (19.1)
White	lux (fc)	0	54981 (5108)	19793 (1839)	4948 (460)	2199 (204)
Full colors	lux (fc)	0	94519 (8781)	34027 (3161)	8507 (790)	3781 (351)



Distance	m (ft in)	0	3 (9' 10")	5 (16' 5")	10 (32' 10")	15 (49' 3")
Diameter 10%	m (ft in)	0	0.35 (1' 2")	0.59 (1' 11")	1.17 (3' 10")	1.76 (5' 9")
Diameter 50%	m (ft in)	0	0.25 (0' 10")	0.41 (1' 4")	0.82 (2' 8")	1.23 (4' 0")

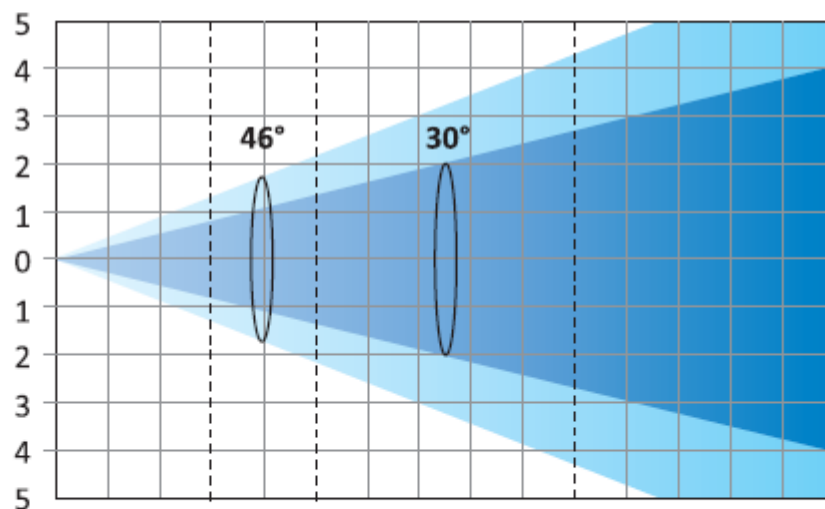
*Lumen values detected with integrating sphere. Measurements taken 15 minutes after the fixture was turned on.

MAXIMUM ZOOM

Maximum Zoom - Fan Speed Mode @ FULL (46° 10% - 30° 50%)

Total Output: 13500 lumens (FULL COLORS)

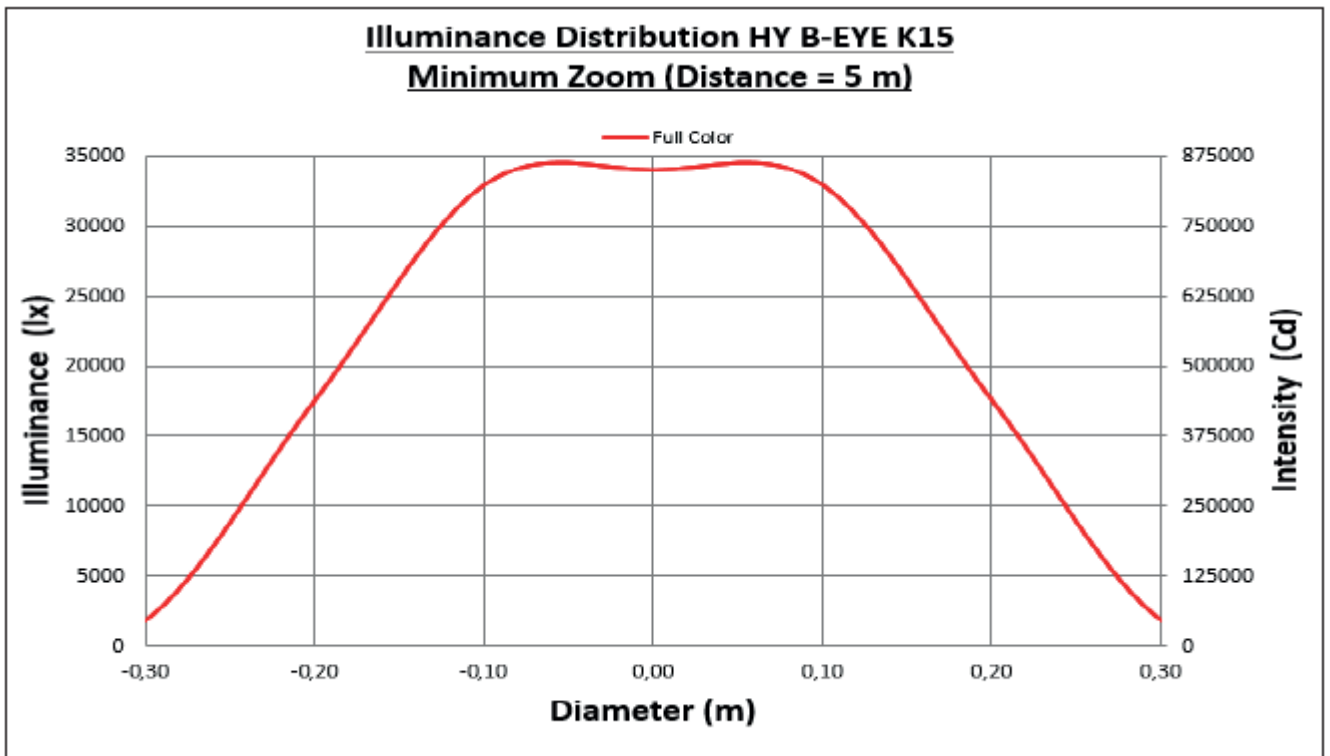
Red	lux (fc)	0	824 (76.5)	297 (27.6)	74 (6.89)	33 (3.06)
Green	lux (fc)	0	1399 (130)	504 (46.8)	126 (11.7)	56 (5.2)
Blue	lux (fc)	0	204 (19)	73 (6.82)	18 (1.71)	8 (0.76)
White	lux (fc)	0	2032 (189)	732 (68)	183 (17)	81 (7.55)
Full colors	lux (fc)	0	3531 (328)	1271 (118)	318 (29.5)	141 (13.1)



Distance	m (ft in)	0	3 (9' 10")	5 (16' 5")	10 (32' 10")	15 (49' 3")
Diameter 10%	m (ft in)	0	2.55 (8' 4")	4.24 (13' 11")	8.49 (27' 10")	12.73 (41' 9")
Diameter 50%	m (ft in)	0	1.61 (5' 3")	2.68 (8' 9")	5.36 (17' 7")	8.04 (26' 4")

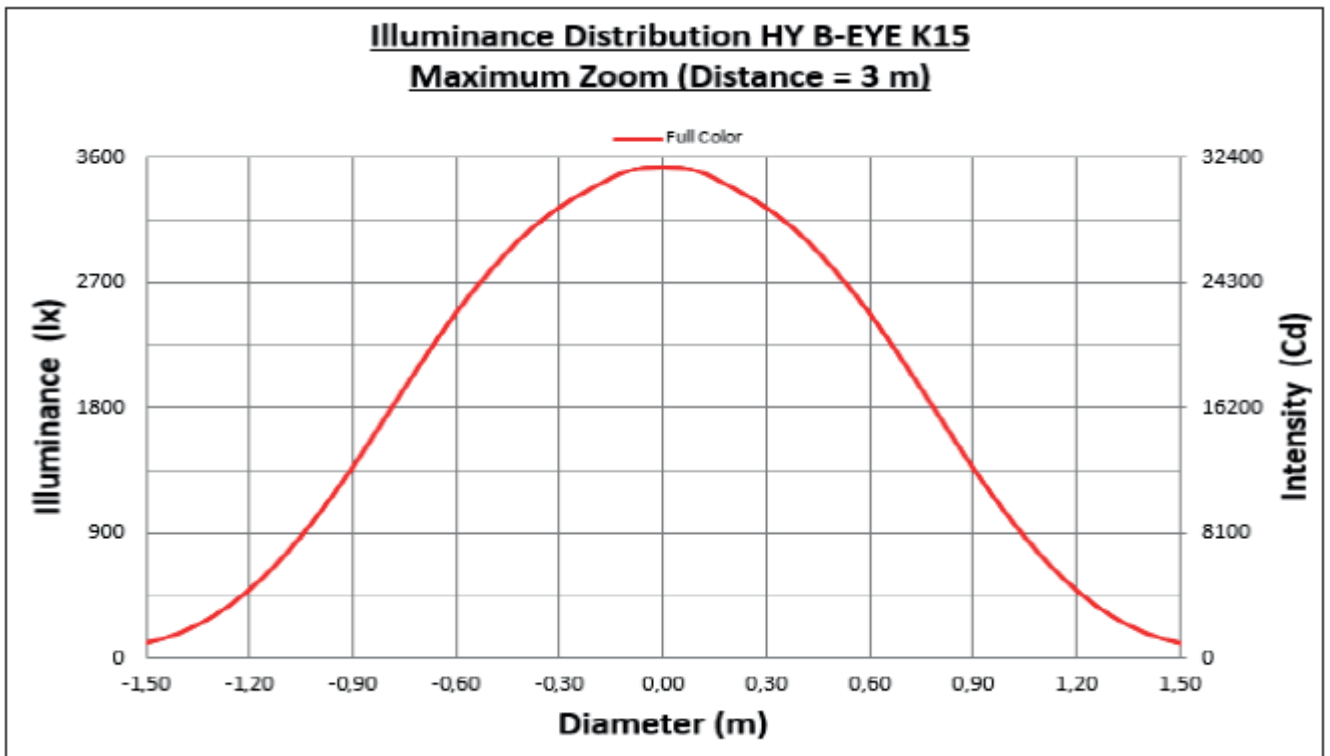
*Lumen values detected with integrating sphere. Measurements taken 15 minutes after the fixture was turned on.

MINIMUM ZOOM: ILLUMINANCE DISTRIBUTION



*Lumen values detected with integrating sphere. Measurements taken 15 minutes after the fixture was turned on.

MAXIMUM ZOOM: ILLUMINANCE DISTRIBUTION



*Lumen values detected with integrating sphere. Measurements taken 15 minutes after the fixture was turned on.

TM-30: WHITE

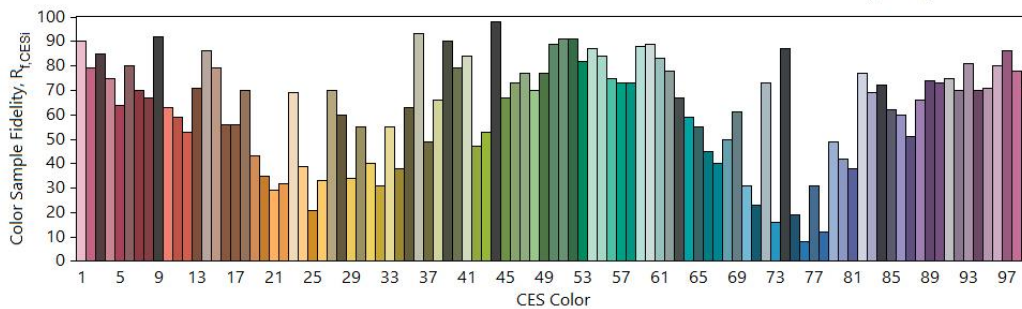
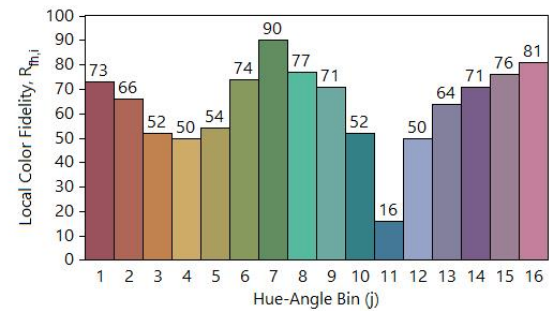
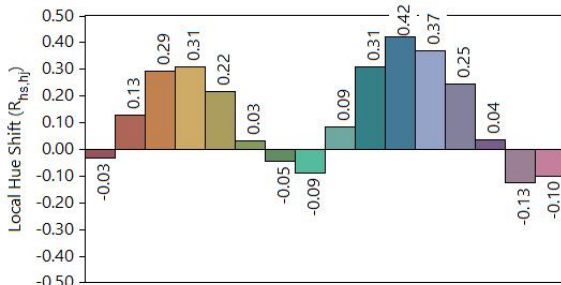
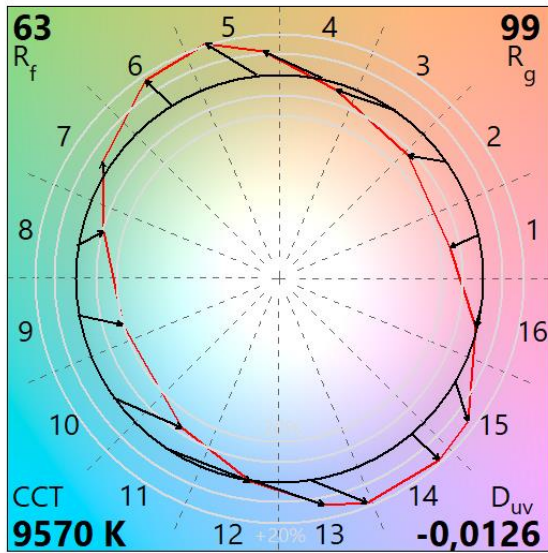
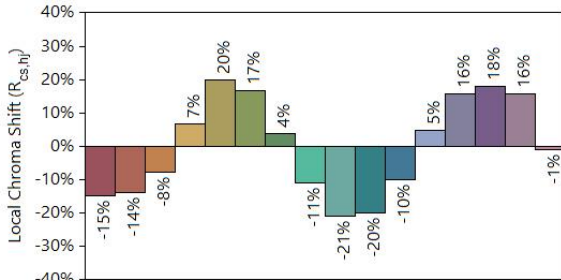
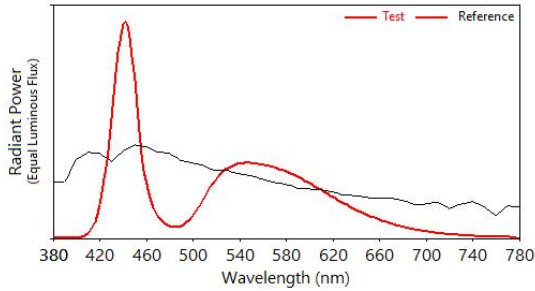
IES TM-30-18 Color Rendition Report

Source: 435 - HY B-EYE K15

Manufacturer: CLAY PAKY

Date: 04.12.2024

Model: 435 - HY B-EYE K15



Notes: WHITE

x 0,2902
y 0,2765
u' 0,2023
v' 0,4337

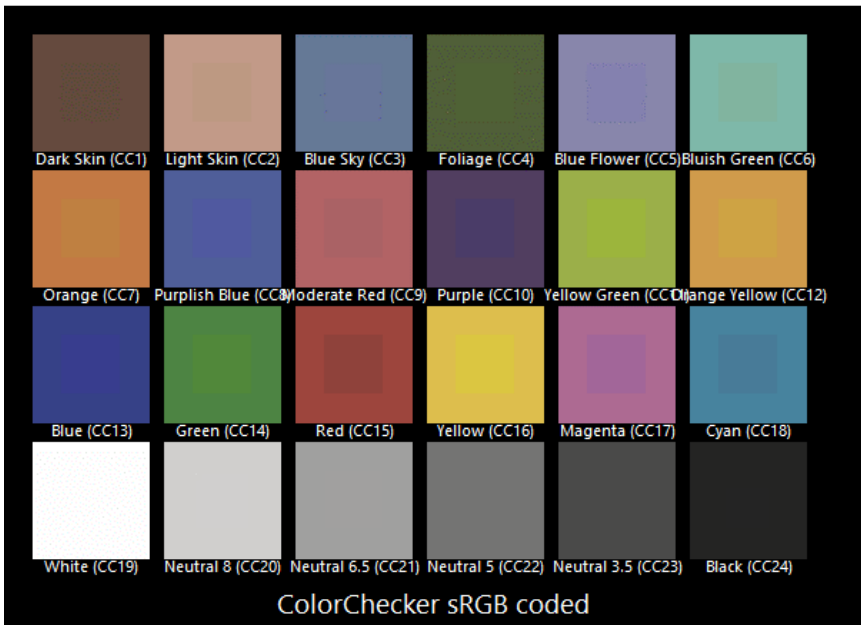
CIE 13.3-1995
(CRI)
R_a 70
R_g 12

Colors are for visual orientation purposes only.

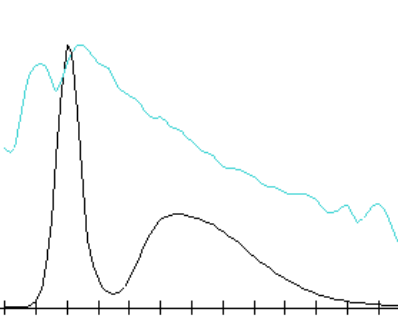
TLCI-2012: WHITE

Direct spectrum input : CCT = D9570 (-2.9)

TLCI-2012 : 42 (D9570)



Sector	Lightness	Chroma	Hue
R	++++	++	+
R/Y	0	0	-----
Y	--	---	-----
Y/G	--	---	0
G	--	---	+++
G/C	+	0	+++++
C	+++	0	0
C/B	+++++	+	---
B	0	---	-----
B/M	++	---	++
M	++++	--	+++++
M/R	++++	0	++++



TM-30: CTO 0%

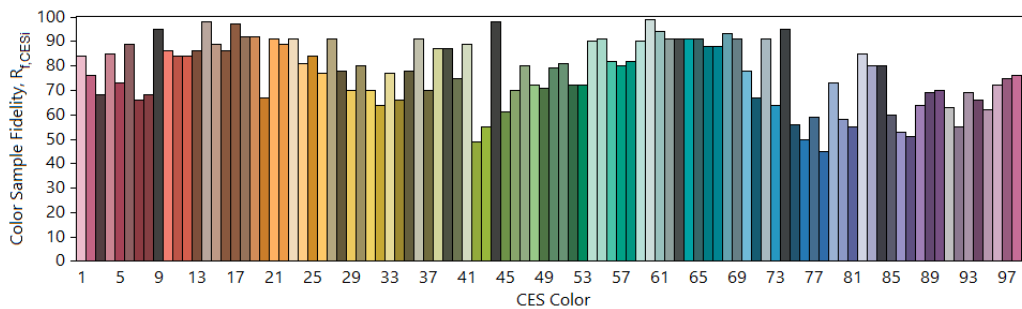
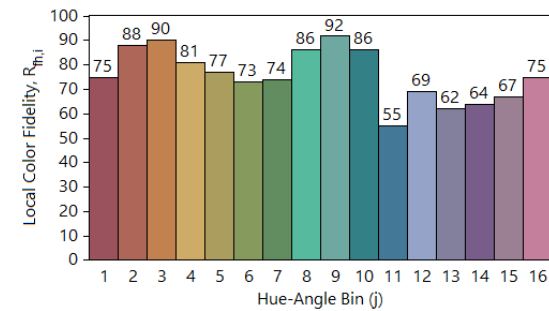
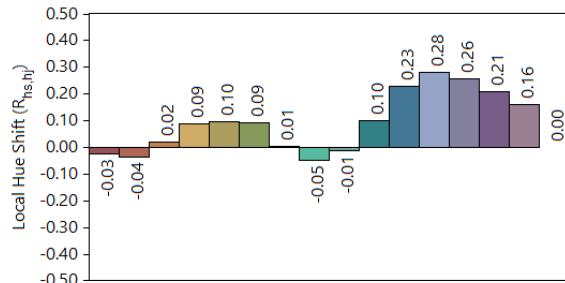
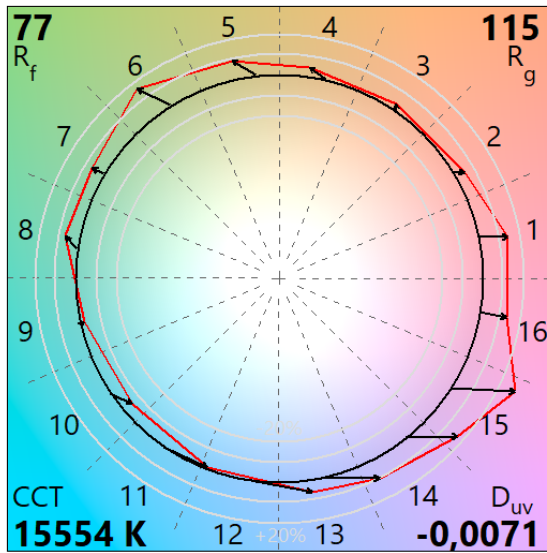
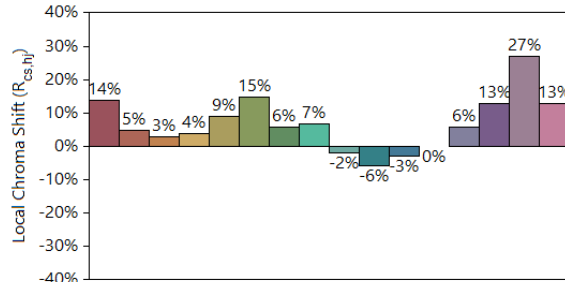
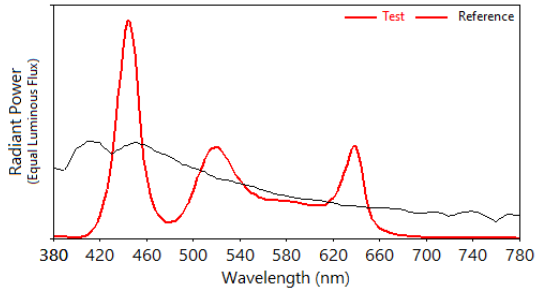
IES TM-30-18 Color Rendition Report

Source: HY B-EYE K15

Manufacturer: Clay Paky

Date: 14.04.2022

Model: HY B-EYE K15



Notes: CTO 0%

x 0,2679
y 0,2596
u' 0,1921
v' 0,4187

CIE 13.3-1995
(CRI)
R_a 74
R_g -2

Colors are for visual orientation purposes only.

TM-30: CTO 4%

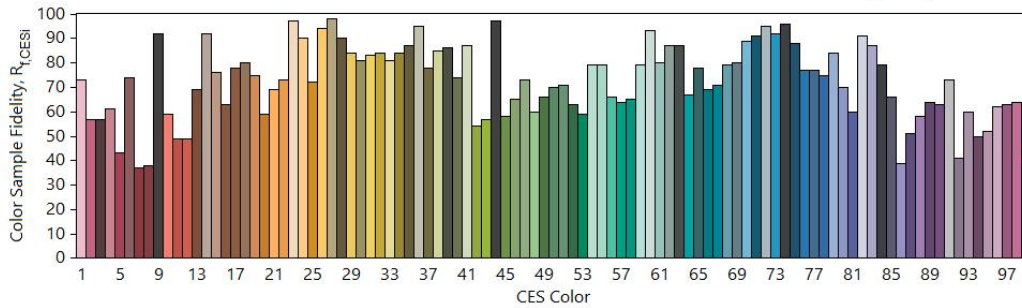
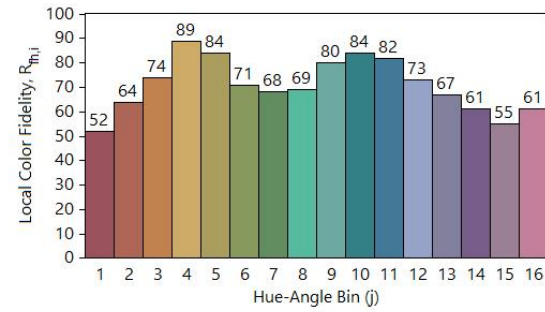
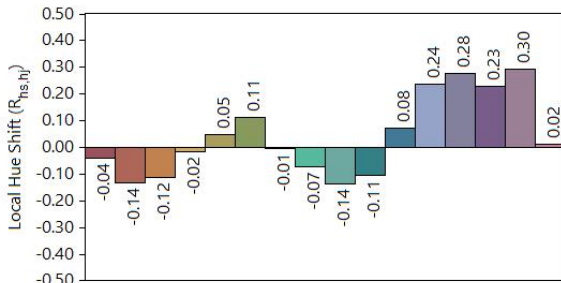
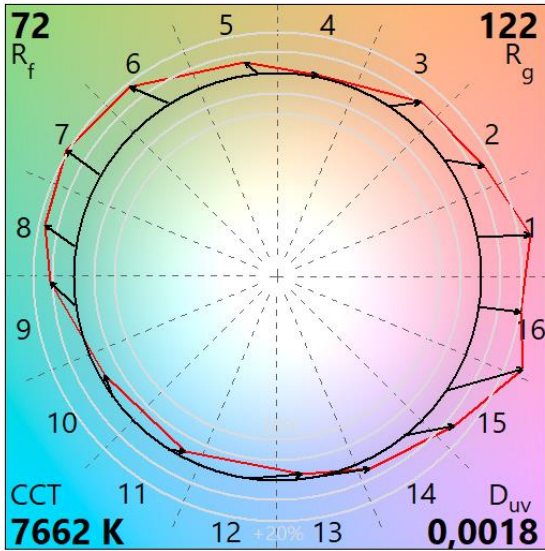
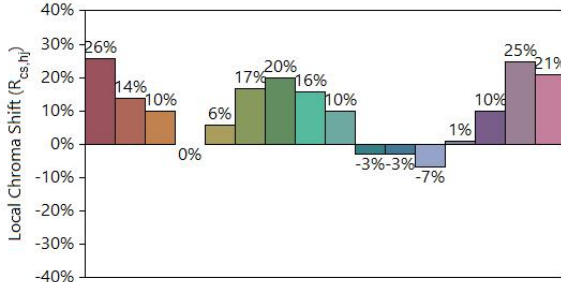
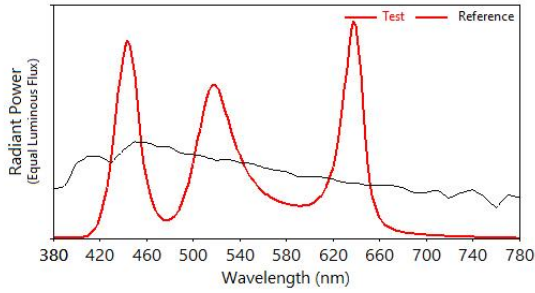
IES TM-30-18 Color Rendition Report

Source: 435 - HY B-EYE K15

Manufacturer: CLAY PAKY

Date: 04.12.2024

Model: 435 - HY B-EYE K15



Notes: CTO 4%

x 0,2978
y 0,3110
u' 0,1941
v' 0,4561

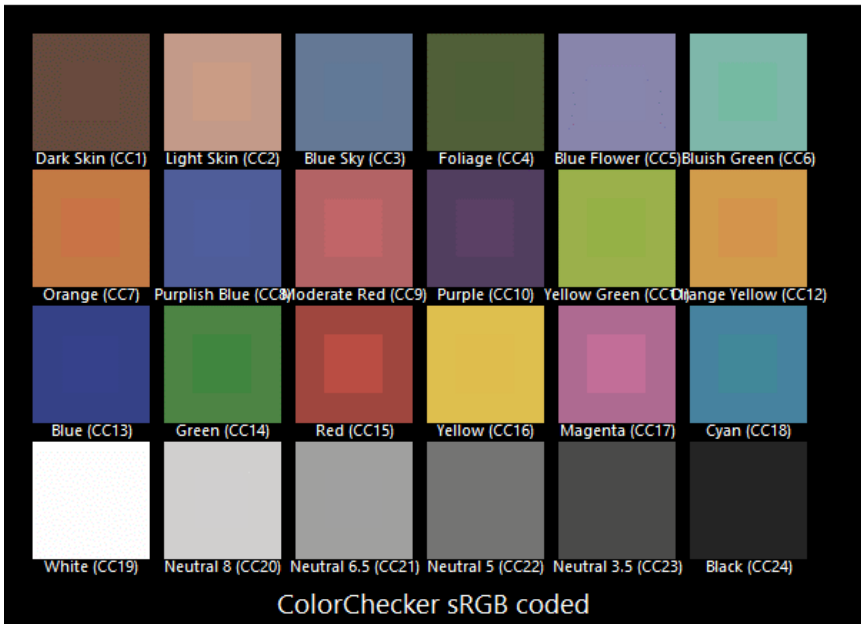
CIE 13.3-1995
(CRI)
R_a 62
R_g -97

Colors are for visual orientation purposes only.

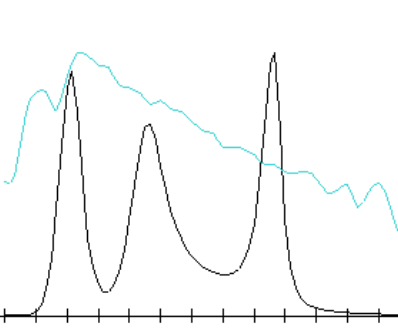
TLCI-2012: CTO 4%

Direct spectrum input : CCT = D7662 (-0.2)

TLCI-2012 : 37 (D7662)



Sector	Lightness	Chroma	Hue
R	---	--	++
R/Y	0	-	+++
Y	0	0	++
Y/G	0	-	--
G	0	-	-
G/C	0	----	+++++
C	-	---	+++++++
C/B	--	0	+++++++
B	0	0	0
B/M	-	---	-
M	--	---	---
M/R	-----	---	---



TM-30: CTO 100%

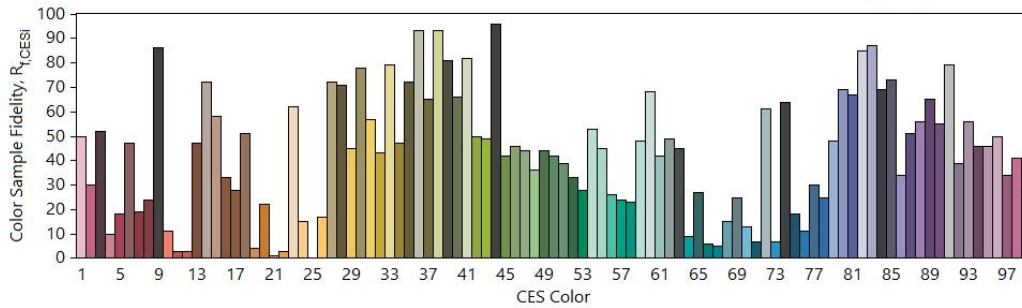
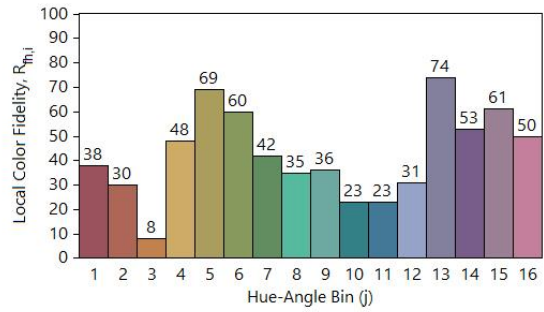
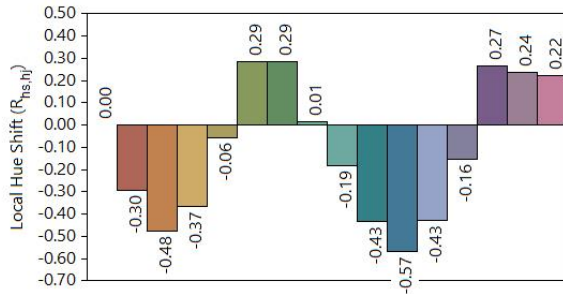
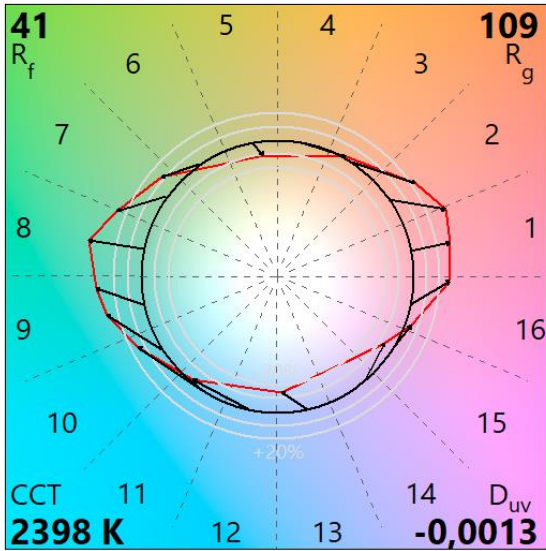
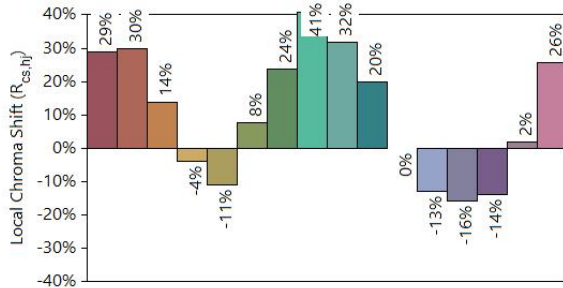
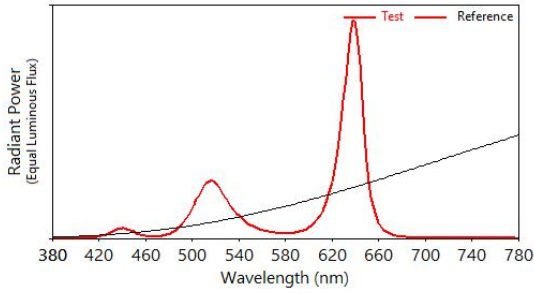
IES TM-30-18 Color Rendition Report

Source: 435 - HY B-EYE K15

Manufacturer: CLAY PAKY

Date: 04.12.2024

Model: 435 - HY B-EYE K15



Notes: CTO 100%

x 0,4837
 y 0,4105
 u' 0,2780
 v' 0,5309

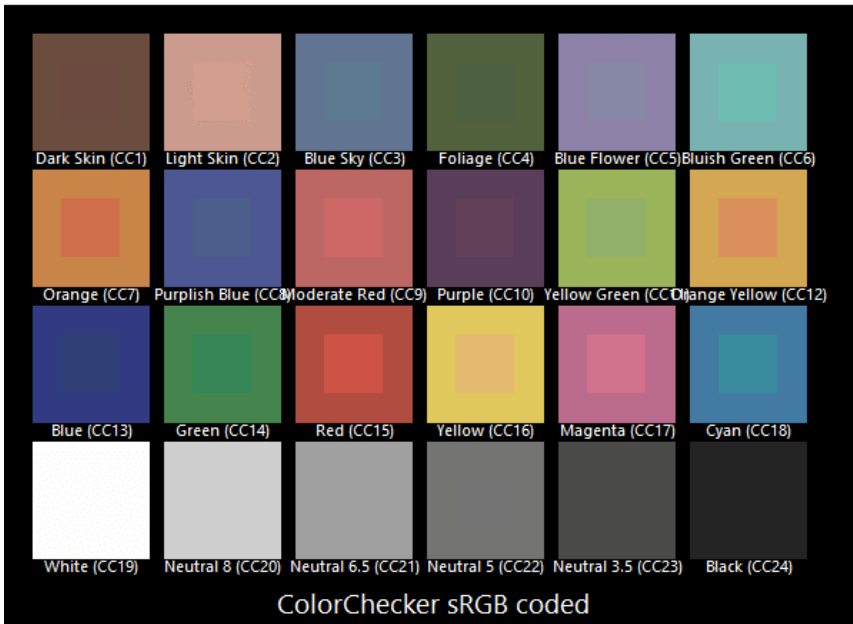
CIE 13.3-1995
 (CRI)
 R_a 8
 R_g -160

Colors are for visual orientation purposes only.

TLCI-2012: CTO 100%

Direct spectrum input : CCT = P2398 (-0.2)

TLCI-2012 : 8 (P2398)



Sector	Lightness	Chroma	Hue
R	---	---	+++
R/Y	+++++	++++	N/A
Y	+++++	+++++	+++++
Y/G	++	+++++	----
G	0	+	----
G/C	0	0	----
C	---	---	+++++
C/B	----	+	N/A
B	-	+++++	+++++
B/M	N/A	N/A	N/A
M	N/A	N/A	N/A
M/R	--	0	----

