


PHOTOMETRIC TEST REPORT



FIXTURE DATA

Manufacturer: Clay Paky s.r.l.
Fixture model: K-EYE K20 HCR
Date: 2017-08

TABLE OF CONTENTS:

 MINIMUM ZOOM	3
 MAXIMUM ZOOM	4
 ILLUMINANCE DISTRIBUTION	5
 TM-30: CTO 0%	6
 TLCI-2012: CTO 0%	7

MINIMUM ZOOM

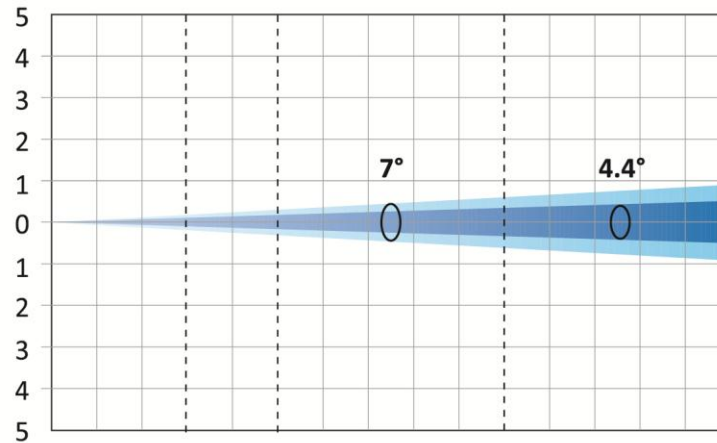
Minimum Zoom (7° 10% - 4.4° 50%)

Total Output: 3850 lumens (ALL COLORS)

Total Output: 1900 lumens (CTO 100%)

Total Output: 3200 lumens (CTO 0%)

Red	lux (fc)	0	4592 (427)	1653 (154)	413 (38.4)	184 (17.1)
Amber	lux (fc)	0	19197 (1783)	6911 (642)	1728 (161)	768 (71.3)
Lime	lux (fc)	0	39044 (3627)	14056 (1306)	3514 (326)	1562 (145)
Green	lux (fc)	0	11719 (1089)	4219 (392)	1055 (98)	469 (43.5)
Cyan	lux (fc)	0	5761 (535)	2074 (193)	519 (48.2)	230 (21.4)
Blue	lux (fc)	0	1794 (167)	646 (60)	162 (15)	72 (6.67)
All colors	lux (fc)	0	76553 (7112)	27559 (2560)	6890 (640)	3062 (284)
CTO 100%	lux (fc)	0	37817 (3513)	13614 (1265)	3404 (316)	1513 (141)
CTO 0%	lux (fc)	0	63575 (5906)	22887 (2126)	5722 (532)	2543 (236)



Distance	m (ft in)	0	3 (9'10")	5 (16'5")	10 (32'10")	15 (49'3")
Diameter 10%	m (ft in)	0	0.37 (1'2")	0.61 (2'0")	1.22 (4'0")	1.83 (6'0")
Diameter 50%	m (ft in)	0	0.23 (0'9")	0.38 (1'3")	0.77 (2'6")	1.15 (3'9")

*Lumen values detected with integrating sphere. Measurements taken 15 minutes after the fixture was turned on.

MAXIMUM ZOOM

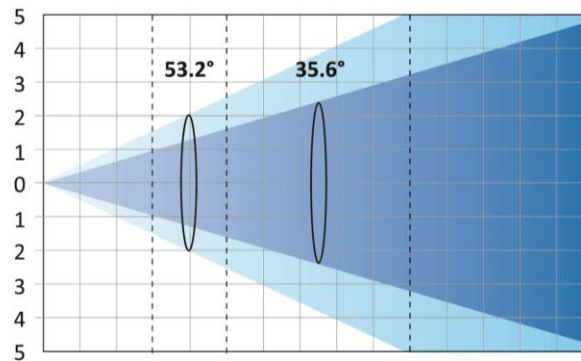
Maximum Zoom (53.2° 10% - 35.6° 50%)

Total Output: 9260 lumens (ALL COLORS)

Total Output: 4680 lumens (CTO 100%)

Total Output: 7540 lumens (CTO 0%)

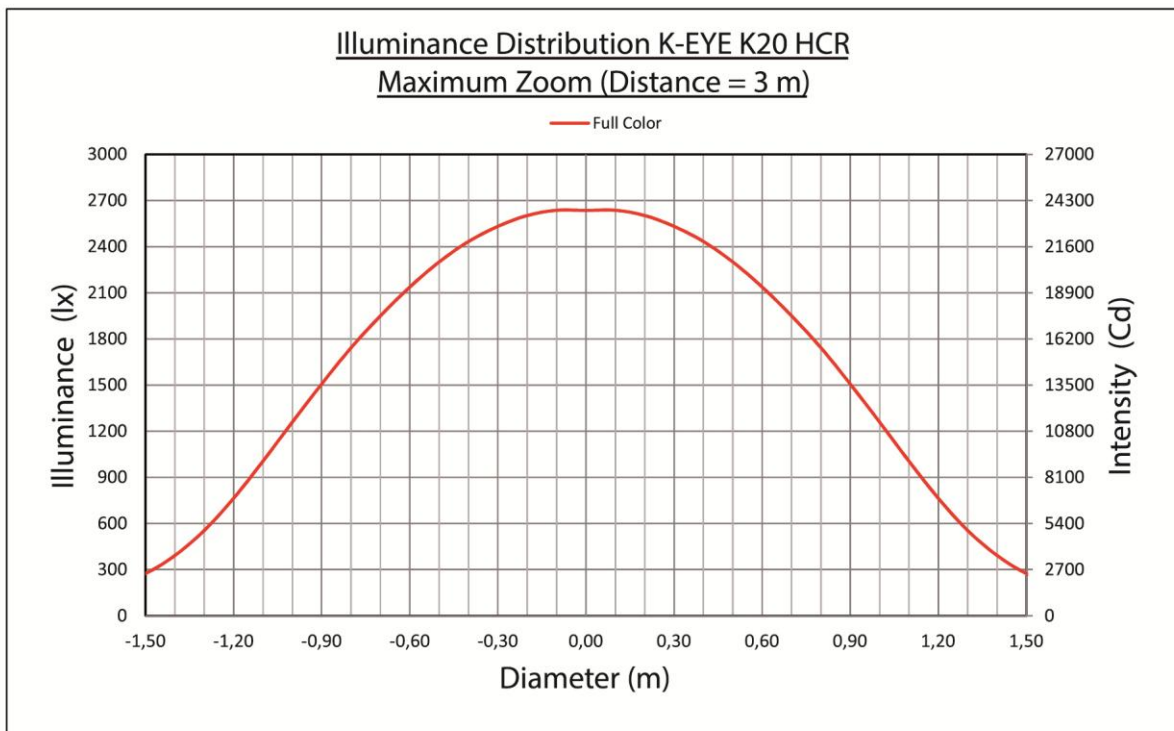
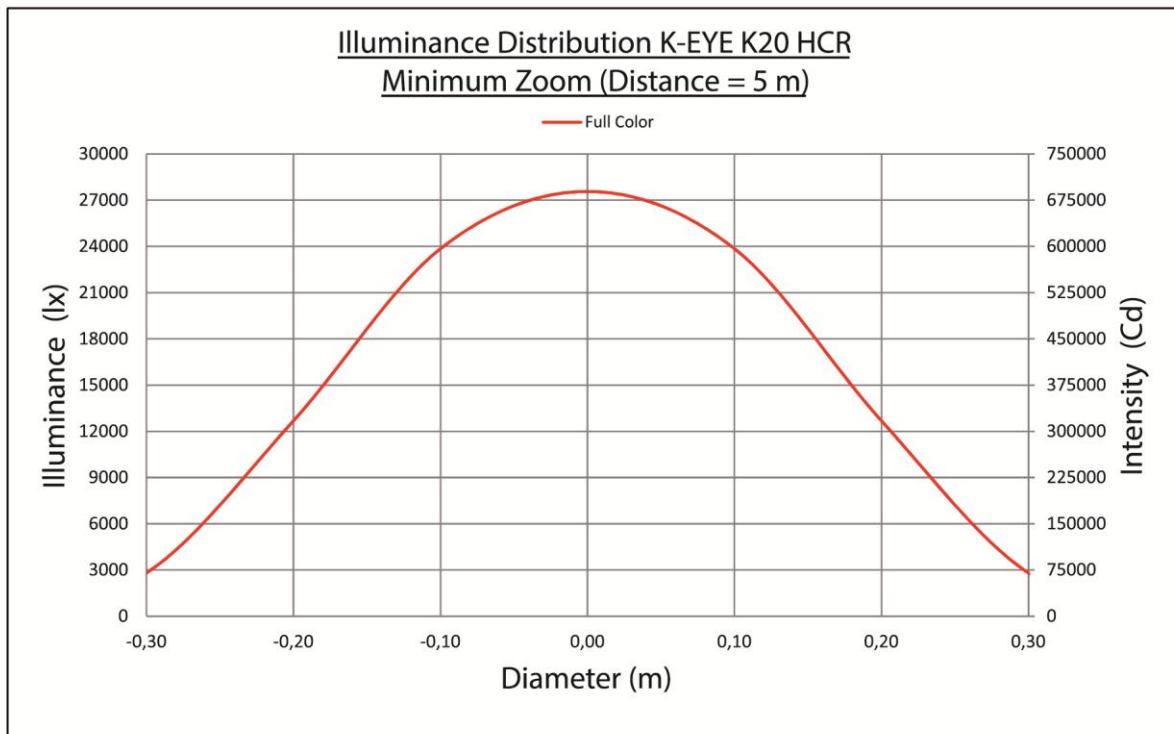
Red	lux (fc)	0	162 (15)	58 (5.42)	15 (1.35)	6 (0.6)
Amber	lux (fc)	0	674 (62.6)	243 (22.5)	61 (5.64)	27 (2.5)
Lime	lux (fc)	0	1332 (124)	480 (44.5)	120 (11.1)	53 (4.95)
Green	lux (fc)	0	392 (36.4)	141 (13.1)	35 (3.28)	16 (1.46)
Cyan	lux (fc)	0	194 (18)	70 (6.49)	17 (1.62)	8 (0.72)
Blue	lux (fc)	0	68 (6.32)	24 (2.27)	6 (0.57)	3 (0.25)
All colors	lux (fc)	0	2635 (245)	949 (88.1)	237 (22)	105 (9.79)
CTO 100%	lux (fc)	0	1367 (127)	492 (45.7)	123 (11.4)	55 (5.08)
CTO 0%	lux (fc)	0	2146 (199)	773 (71.8)	193 (17.9)	86 (7.97)



Distance	m (ft in)	0	3 (9'10")	5 (16'5")	10 (32'10")	15 (49'3")
Diameter 10%	m (ft in)	0	3.00 (9'10")	5.01 (16'5")	10.02 (32'10")	15.02 (49'3")
Diameter 50%	m (ft in)	0	1.93 (6'4")	3.21 (10'6")	6.42 (21'1")	9.63 (31'7")

*Lumen values detected with integrating sphere. Measurements taken 15 minutes after the fixture was turned on.

ILLUMINANCE DISTRIBUTION



TM-30: CTO 0%

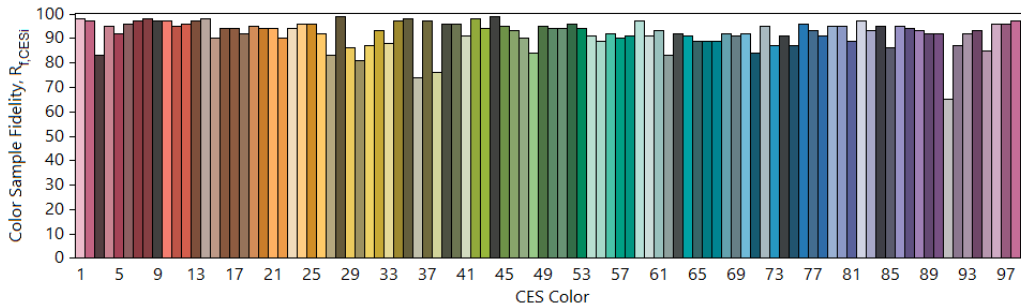
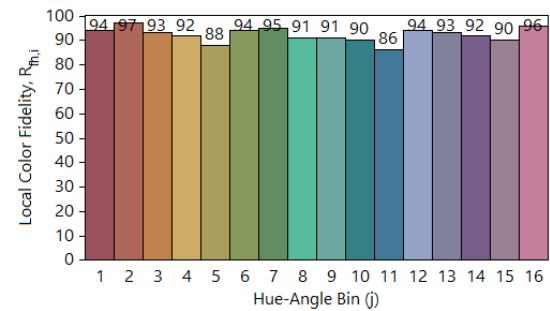
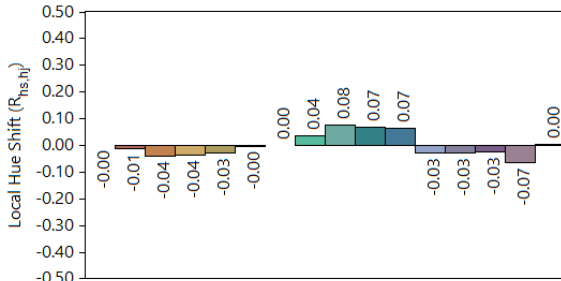
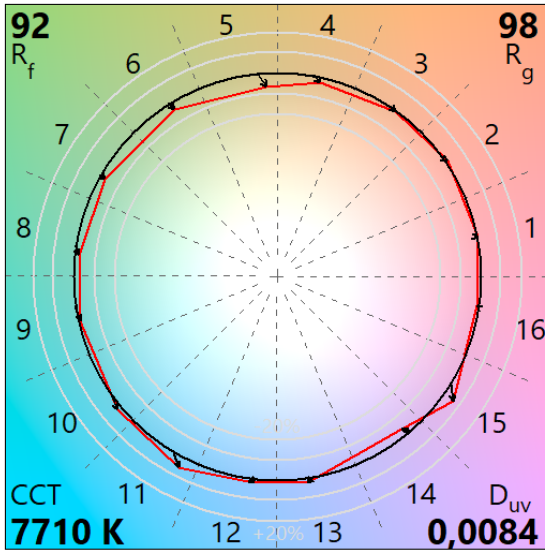
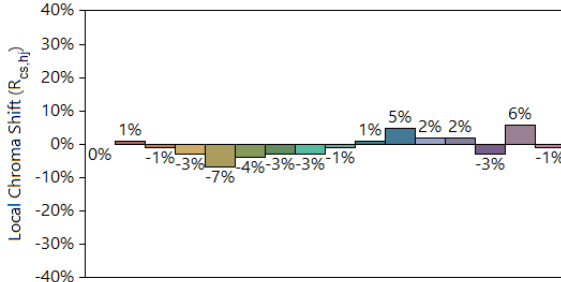
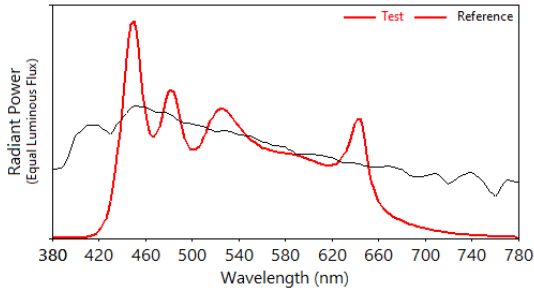
IES TM-30-18 Color Rendition Report

Source: K-EYE K20 HCR

Manufacturer: Clay Paky

Date:

Model: K-EYE K20 HCR



Notes: CTO a 0%

x 0,2945
y 0,3203
u' 0,1883
v' 0,4609

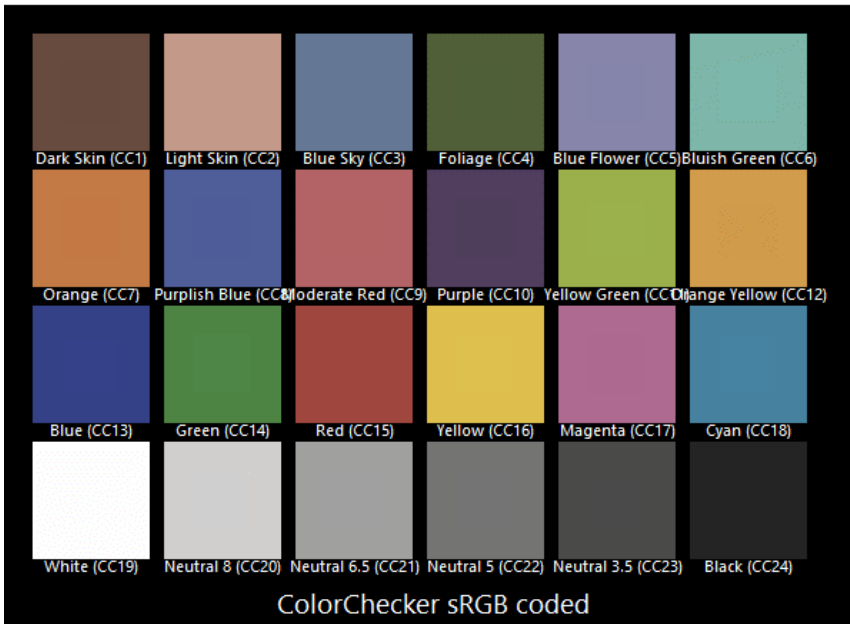
CIE 13.3-1995
(CRI)
R_a 97
R_g 96

Colors are for visual orientation purposes only.

TLCI-2012: CTO 0%

Direct spectrum input : CCT = D7710 (+1.0)

TLCI-2012 : 98 (D7710)



Sector	Lightness	Chroma	Hue
R	0	0	0
R/Y	0	0	0
Y	0	0	0
Y/G	0	0	0
G	0	0	0
G/C	0	0	0
C	0	0	-
C/B	0	0	-
B	0	0	0
B/M	0	+	0
M	0	0	0
M/R	0	0	0

