

PHOTOMETRIC TEST REPORT



FIXTURE DATA

Manufacturer: Clay Paky s.r.l.
Fixture model: K-EYE K10 HCR
Date: 2017-12

TABLE OF CONTENTS:

⇒ MINIMUM ZOOM	3
⇒ MAXIMUM ZOOM	4
⇒ ILLUMINANCE DISTRIBUTION	5
⇒ TM-30: CTO 0%	6
⇒ TLCI-2012: CTO 0%	7

MINIMUM ZOOM

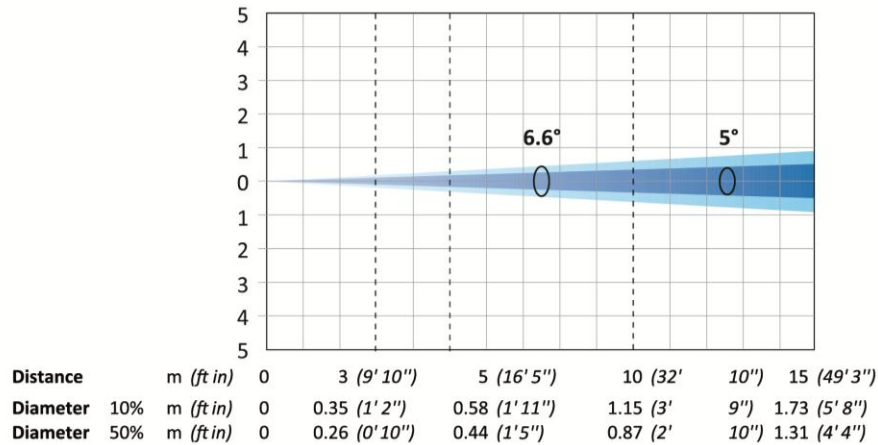
Minimum Zoom (6.6° 10% - 5° 50%)

Total Output: 2100 lumens (ALL COLORS)

Total Output: 1100 lumens (CTO 100%)

Total Output: 1800 lumens (CTO 0%)

Red	lux (fc)	0	2669 (248)	961 (89.3)	240 (22.3)	107 (9.92)
Amber	lux (fc)	0	9575 (890)	3447 (320)	862 (80.1)	383 (35.6)
Lime	lux (fc)	0	19989 (1857)	7196 (669)	1799 (167)	800 (74.3)
Green	lux (fc)	0	6567 (610)	2364 (220)	591 (54.9)	263 (24.4)
Cyan	lux (fc)	0	3239 (301)	1166 (108)	292 (27.1)	130 (12)
Blue	lux (fc)	0	1186 (110)	427 (39.7)	107 (9.92)	47 (4.41)
All colors	lux (fc)	0	40058 (3721)	14421 (1340)	3605 (335)	1602 (149)
CTO 100%	lux (fc)	0	20844 (1936)	7504 (697)	1876 (174)	834 (77.5)
CTO 0%	lux (fc)	0	33722 (3133)	12140 (1128)	3035 (282)	1349 (125)



*Lumen values detected with integrating sphere. Measurements taken 15 minutes after the fixture was turned on.

MAXIMUM ZOOM

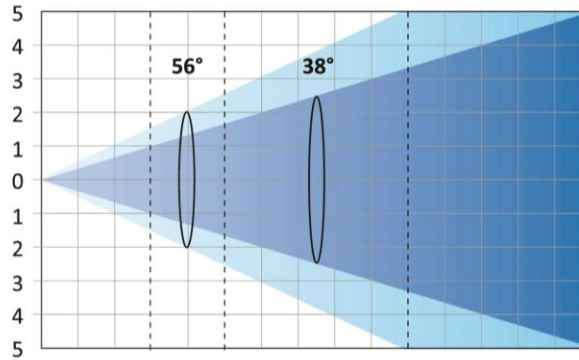
Maximum Zoom (56° 10% - 38° 50%)

Total Output: 5000 lumens (ALL COLORS)

Total Output: 1600 lumens (CTO 100%)

Total Output: 4200 lumens (CTO 0%)

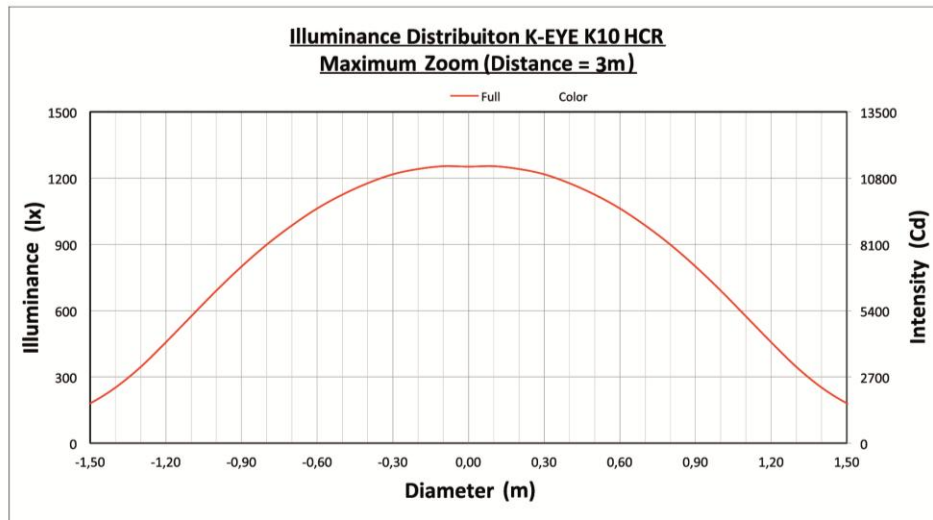
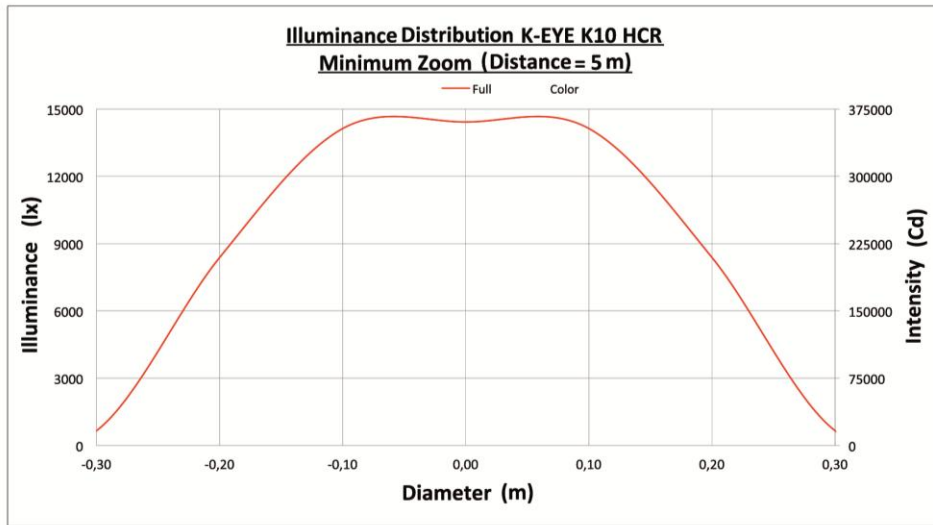
Red	lux (fc)	0	87 (8.08)	31 (2.91)	8 (0.73)	3 (0.32)
Amber	lux (fc)	0	311 (28.9)	112 (10.4)	28 (2.6)	12 (1.16)
Lime	lux (fc)	0	621 (57.7)	224 (20.8)	56 (5.19)	25 (2.31)
Green	lux (fc)	0	200 (18.6)	72 (6.69)	18 (1.67)	8 (0.74)
Cyan	lux (fc)	0	99 (9.2)	36 (3.31)	9 (0.83)	4 (0.37)
Blue	lux (fc)	0	41 (3.81)	15 (1.37)	4 (0.34)	2 (0.15)
All colors	lux (fc)	0	1252 (116)	451 (41.9)	113 (10.5)	50 (4.65)
CTO 100%	lux (fc)	0	661 (61.4)	238 (22.1)	59 (5.53)	26 (2.46)
CTO 0%	lux (fc)	0	1056 (98.1)	380 (35.3)	95 (8.83)	42 (3.92)



Distance	m (ft in)	0	3 (9' 10")	5 (16' 5")	10 (32' 10")	15 (49' 3")
Diameter 10%	m (ft in)	0	3.19 (10' 6")	5.32 (17' 5")	10.63 (34' 11")	15.95 (52' 4")
Diameter 50%	m (ft in)	0	2.07 (6' 9")	3.44 (11' 4")	6.89 (22' 7")	10.33 (33' 11")

*Lumen values detected with integrating sphere. Measurements taken 15 minutes after the fixture was turned on.

ILLUMINANCE DISTRIBUTION



TM-30: CTO 0%

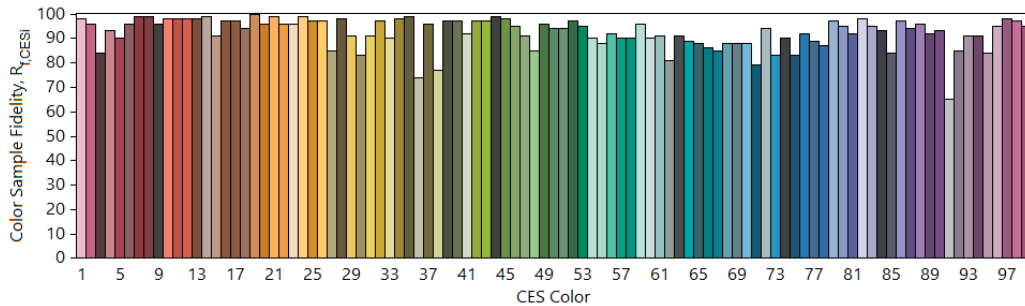
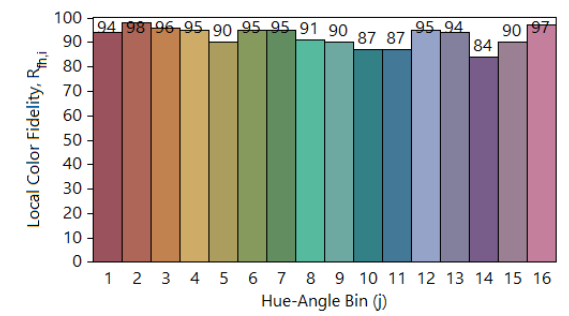
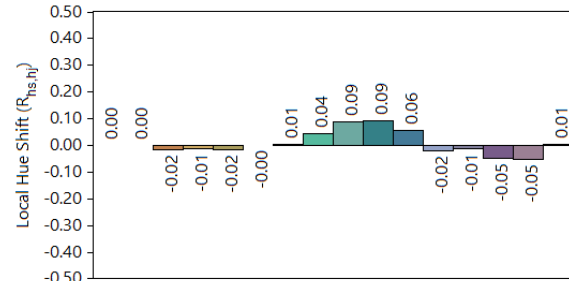
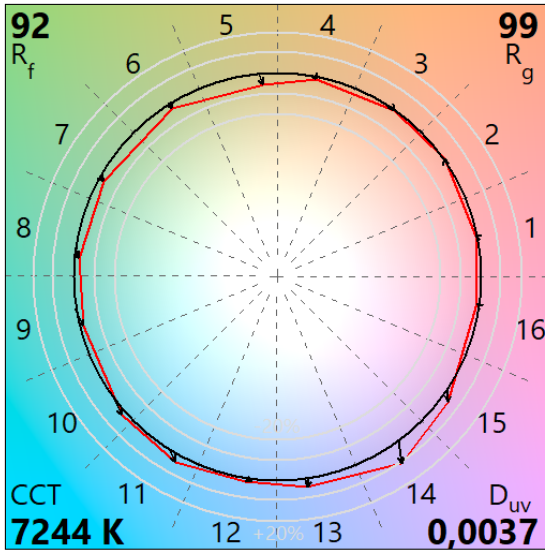
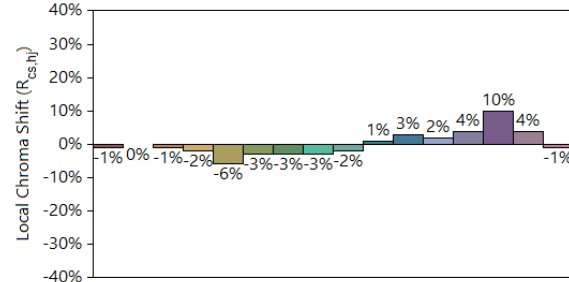
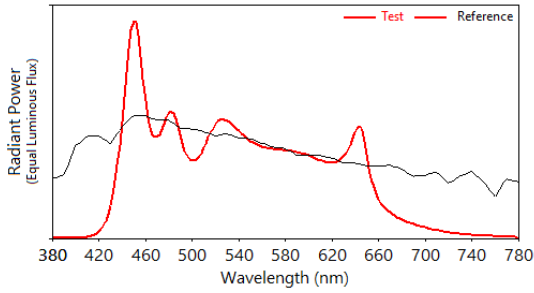
IES TM-30-18 Color Rendition Report

Source: K-EYE K10 HCR

Manufacturer: Clay Paky

Date:

Model: K-EYE K10 HCR



Notes: CTO a 0%

x 0,3019
y 0,3191
u' 0,1940
v' 0,4613

CIE 13.3-1995
(CRI)
R_a 97
R_g 99

Colors are for visual orientation purposes only.

TLCI-2012: CTO 0%

Direct spectrum input : CCT = D7244 (+0.1)

TLCI-2012 : 97 (D7244)



Sector	Lightness	Chroma	Hue
R	0	0	0
R/Y	0	0	0
Y	0	0	0
Y/G	0	0	0
G	0	0	0
G/C	0	0	0
C	0	0	0
C/B	0	0	--
B	0	0	0
B/M	0	+	0
M	0	0	0
M/R	0	0	0

