



Mosaico is a powerful exterior LED image projector for projection of textures, images and logos onto buildings and landscapes. The outstanding 11'667 lumens output allows for replacement of the 1.200 HID fixture with this far more durable and advanced tool. The complete set of on board effects allow for extreme creative integration in any context and the zoomable optics makes it a truly versatile fixture for both near-field and long-throw installations.

MAIN FEATURES

- IP66 allowing long-lasting installation with minimal maintenance
- Beam angle zooming from 12.9° to 46.5° allows for flexible use and opens up a new level of effects
- Extremely bright with over 11'667 lumens, crisp focus and with 5 layers of effects allowing for limitless combinations

TECHNICAL SPECIFICATION

LIGHT SOURCE

- Source: 250W high-power white LED
- CCT: 8.500 K
- Luminous flux: (12.9°) 10'740 lm - (46.5°) 11'667 lm @full
- Lux: (12.9°) 10'512 lx - (46.5°) 1'409 lx @5 m full
- Source life expectancy: > 30.000 hrs (L70B10 @Ta 25° C / 77° F)

OPTICS

- Zoom: 12,9° - 46,5° motorised linear zoom
- Lens diameter: 109 mm
- Lens type: high-quality glass lens optics
- Focus: motorised

COLOUR SYSTEM

- Colour wheel: 14 colour filters on two colour wheels

DYNAMIC EFFECTS

- Animation wheel: animation wheel with CW and CCW rotation
- Rotating gobos: 7 rotating gobos + open, interchangeable, indexing
- Gobo size (BW): outer: 26,9 mm - image: 23 mm
- Gobo size (Color): outer: 26,9 mm - image: 20,5 mm
- Circular prism: 3f with bi-directional rotation, indexing
- Frost: linear 0 - 100% frost filter
- Iris: 5 - 100% motorised iris
- Special features: interchangeable animation wheel through magnets and record scenes and create chases and shows throughout these scenes

BODY

- Body: aluminium die-casting
- Body colour: RAL 9006
- Other: Inspectable cover window for gobos replacement and maintenance

CONTROL

- Protocols: DMX512, RDM, W-DMX, Stand Alone programmer and playback
- DMX channels: 12 / 14 / 16 / 19channel
- W-DMX: included, wireless solution receiver
- RDM: RDM for remote monitoring and settings
- Display: black OLED touch display
- Firmware upgrade: yes, via USB - DMX interface (UPBOX1) not included

ELECTRONICS

- Dimmer: linear 0 ~ 100% electronic dimmer
- Dimmer curves: 4 selectable dimming modes available
- Strobe / shutter: 1~30 Hz, electronic
- Operating temperature: -20° C / +45° C (-4° F / +113° F)

ELECTRICAL

- Mains power supply: 100-240V - 50/60Hz
- Max power consumption: 320W
- Output (at 230V): 11 units on a single power line
- Power factor: >0,95

PHYSICAL

- IP rating: 66 for outdoor installations
- Cooling: active, with IP low noise fan
- Suspension and fixing: bracket for hanging and positioning
- Adaptors: XLR and Schuko 16A adaptors included
- Signal connection: moulded IP signal IN/OUT connectors
- Power connection: moulded IP power IN/OUT connectors
- Dimensions (WxHxD): 332x425x453mm
- Weight: 19,3kg

ACCESSORIES & RELATED PRODUCTS

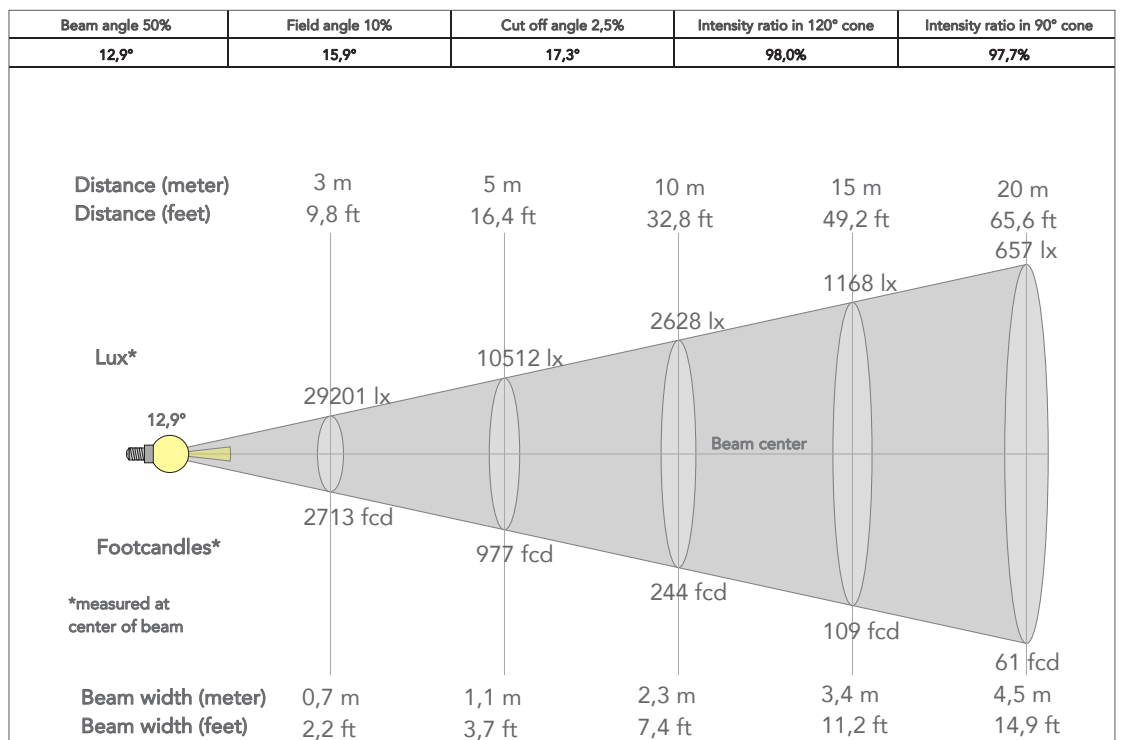
• C6002B	Slim aluminum clamp, 200kg loading, 48-51mm tubes, M10 bolt, Black	• GBS8398BW	Custom glass grid gobo for MOSAICO, used to map perfectly any building surface
• FSHMOSAICO	1U Foam shell compatible with MOSAICO	• GBS8548FC	Gobo in borosilicate glass.Santa Claus. øE26.9, øIMG20,5
• MOSUNIBRACK	Bracket for MOSAICO for wall mounting and suspension on poles	• ANW7474BW	Animation wheel in borosilicate glass. Snow with greeting black white. Ø E 105 mm
• RSR1235B	Steel security cable for hanging bodies, inox steel shackle, L=120 cm, black	• ANW7475BL	Animation wheel in borosilicate glass. Snowfall blue white. Ø E 105 mm
• WSBBF1G5	BlackBox F-1 G5 transmitter, 2,45GHz & 5.2/5,8 GHz, DMX/RDM, 512Ch	• GBS8550BW	Gobo in borosilicate glass. Pines. øE26.9, øIMG23
• WSBBF1G6	BlackBox F-1 G6 transrec, 512ch, 2.45GHz, DMX&RDM,Bluetooth,G3,G4,G4S, G5, CRMX	• GBS9481FC	Gobo in borosilicate glass.Christmas Nativity Madonna with Child. E26.9, IMG20,5
• WSBBR512G5	BlackBox R-512 G5 receiver 512Ch, 2.45GHz & 5.8GHz, DMX/RDM optional	• GBS8549FC	Gobo in borosilicate glass.Merry Christmas. øE26.9, øIMG23
• WSBBR512G6	BlackBox R-512 G6 receiver 512Ch, 2.45GHz,DMX&RDM,Bluetooth,G3,G4,G4S,G5,CRMX	• GBS9490FC	Gobo in borosilicate glass. Christmas. øE26.9, Ø IMG 20,5
• ANW7473BL	Animation wheel in borosilicate glass. Snow with greeting blue white. Ø E 105 mm	• ANW7476BW	Animation wheel in borosilicate glass. Snowfall black white. Ø E 105 mm

ACCESSORIES & RELATED PRODUCTS

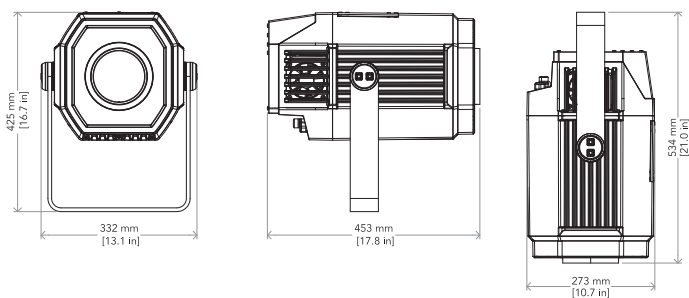
- GBS9489FC Gobo in borosilicate glass.Sacred Family Nativity Jesus Child. E 26,9, IMG20,5
 - GBS8547BW Gobo in borosilicate glass.Christmas tree.øE26,9, øIMG23
 - GBS9488FC Gobo in borosilicate glass.Christmas gift packs.Ø E 26,9 mm, Ø IMG 20,5 mm
 - GBS8545FC Gobo in borosilicate glass. Christmas. Ø E 26,9 mm, Ø IMG 20,5 mm
 - GBS8544BW Gobo in borosilicate glass.Christmas snowflakes. Ø E 26,9, Ø IMG 23
- GBS94862C Gobo in borosilicate glass.Christmas Seasons Greetings. Ø E 26,9mm, Ø IMG 20,5mm
 - FCLMOSAICO Flightcase for 2x MOSAICO, foam shells included
 - AWEXAC1 Extension IP67 power cable, IPpowercon-F -> IPpowercon-M. compatible
 - AWEXAC1L03/05/10/20 IP67 power extension cable for outdoor architectural projectors, L.03/05/10/20 m
 - AWEXDC1L03/05/10/20 IP67 DMX extension cable for outdoor architectural projectors, L.03/05/10/20 m
 - UPBOX1U Firmware uploader kit, USB IN, 3pin XLR DMX OUT, USB OUT

PRESET FULL ON

Beam angle 50%: 12,9°



TECHICAL DRAWINGS



For more product info and downloads visit our website

