

# EclFresnel 2K

LED Fresnel with HB white source, to replace 2.000W lamp



**EclFresnel 2K** is the LED replacement for a standard tungsten 2.000W Fresnel. Featuring the output characteristics of a traditional Fresnel but with beam control, functional barn doors and a power source that focuses on outstanding colour rendition. The **EclFresnel 2K** adds all the advantages of LED to the Fresnel.

## MAIN FEATURES

- TU (3.000 K) and DY (5.600 K) versions available both with HD dimming
- Fresnel lens with 15° to 47° zoom range
- Silent operation for studio and stage use

## VERSIONS

Code	CCT	Pole Operated	Housing
<b>ECLFR2KTU</b>	3.000 K	NO	Black
<b>ECLFR2KDY</b>	5.600 K	NO	Black
<b>ECLFR2KPTU</b>	3.000 K	YES	Black
<b>ECLFR2KPDY</b>	5.600 K	YES	Black
<b>ECLFR2KTUWH</b>	3.000 K	NO	White
<b>ECLFR2KDYWH</b>	5.600 K	NO	White

## TECHNICAL SPECIFICATION

### LIGHT SOURCE

- Source: 500W high-power white LED
- CCT: (TU) 3.000 K - (DY) 5.600K
- Luminous flux: (TU) (15°) 20'256 lm; (47°) 26'126lm @full
- Luminous flux: (DY) (15°) 26'255 lm; (45°) 32'428 lm @ full
- Lux: (TU) (15°) 9'047 lx - (47°) 1'770lx @5 m full
- Lux: (DY) (15°) 11'975 lx - (47°) 2'306lx @5 m full
- CRI: (TU) >94; (DY) >91
- R9: (TU) >73; (DY) >80
- TLCI: (TU) >93; (DY) >93
- TM30 Rf: (TU) >92; (DY) >88
- TM30 Rg: (TU) <103; (DY) <104
- Source life expectancy: > 50.000 h

### OPTICS

- Zoom: 15° - 47° half peak angle
- Lens diameter: 250mm
- Lens type: Fresnel zoom lens
- Other: spigot, barndoor and gel frame included

### COLOUR SYSTEM

- Colour mixing: warm white
- Macros: several pre-built macros with adjustable speed

### DYNAMIC EFFECTS

- Static mode: selection of static dimmer
- Manual mode: manual adjust of dimmer through menu and knob
- Auto mode: built-in programs with execution speed adjustment

### BODY

- Hardware on-board: filter frame, 8 doors barndoor, spigot
- Pan angle: (for pole operated version) 360° with manual regulation
- Tilt angle: (for pole operated version) 150° with manual regulation
- Body: sturdy die-cast aluminium body
- Body colour: black, white finishing available
- Other: Spigot 28 mm

## ACCESSORIES & RELATED PRODUCTS

• 9513FXWL03	Ass. 3x2.5mm TH07 cable, 16A 3p 230V CEE plug, MENAC3FXW socket, L.3 m
• 9533FXWL03	Ass. 3x2.5mm TH07 cable, SHUKO plug, MENAC3FXW socket, L.3m
• 958225L03	3x2.5mm TH07 Cable, 16A 3p PwCon MXW, 16A 3p PwCon FXW, L. 3m
• C6002B	Slim aluminum clamp, 200kg loading, 48-51mm tubes, M10 bolt, Black
• C6040B	Aluminum clamp for 28mm spigot, 200kg load, 48-51mm tubes, black

### CONTROL

- Protocols: DMX512, RDM, rotary knob
- DMX channels: 1 / 2 - 1 / 2 - 2 / 3 / 5channel
- RDM: RDM for remote monitoring and settings
- Display: Graphic User Interface
- Firmware upgrade: yes, via USB - DMX interface (UPBOX1) not included
- Master/Slave: for synchronised operation of more units linked in a chain
- Other: 16bit control of dimmer

### ELECTRONICS

- Dimmer: linear 0 ~ 100% electronic dimmer
- Dimmer curves: selectable dimming modes available
- Strobe / shutter: 1 - 30 Hz, electronic
- Operating temperature: -10° ~ +45°
- LED Control: flicker free frequency with adjustable PWM
- Selectable PWM: 600 ~ 25.000 Hz

### ELECTRICAL

- Mains power supply: 100-240V - 50/60Hz
- Max power consumption: 500W
- Output (at 230V): 4 units on a single power line
- Power factor: >0,96

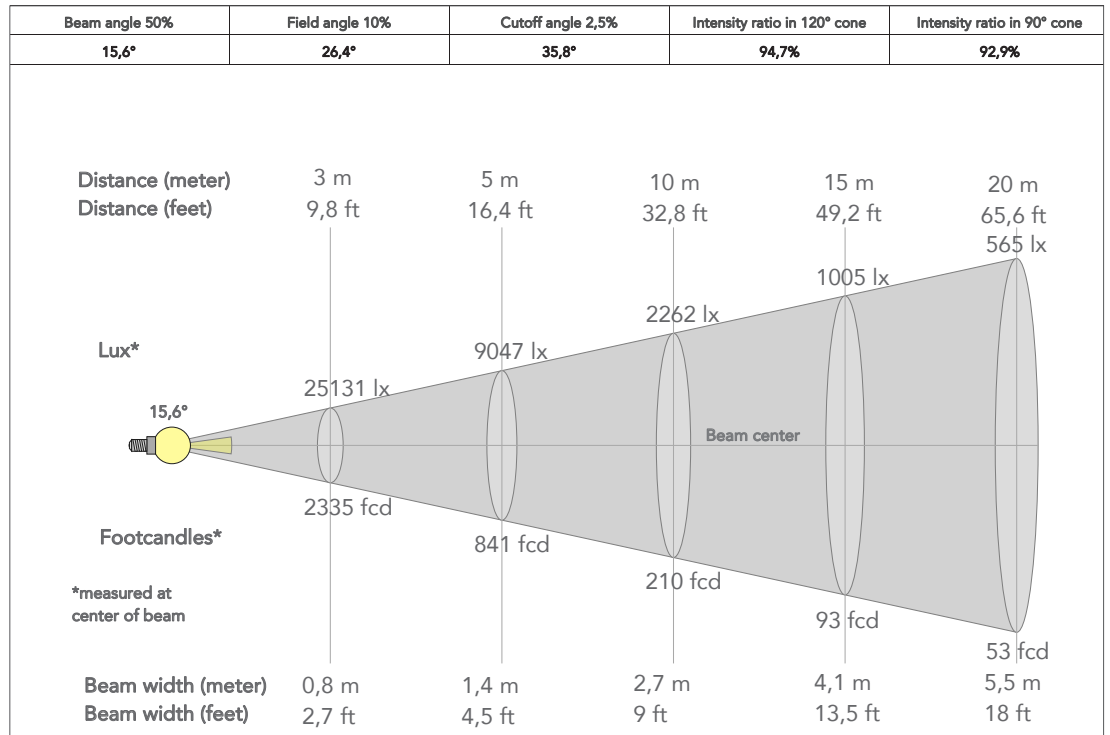
### PHYSICAL

- IP rating: 20
- Cooling: combination of heat pipe cooling system and low noise fan
- Suspension and fixing: bracket for hanging and positioning
- Signal connection: Amphenol XLR 5p IN/OUT connectors
- Power connection: Neutrik powerCON TRUE1 IN/OUT connectors
- Dimensions (WxHxD): 421x537x456 mm - (for pole operated version) 401x691x456mm
- Weight: 17,2 kg - (for pole operated version) 18kg

• ECLFR2KBD	Barn door with directional flaps to adjust the light beam
• ECLFR2KTPG	Gel filter frame for ECLFR2K projectors
• ECLFRSPG	Spigot for PROLIGHTS Fresnel series
• FCLECLFR2K	Flight case for 3 pcs of ECLFR2K
• RSR0630B	Steel security cable for hanging bodies, inox steel shackle, L=60 cm, black
• TOUR53415L03	Dmx cable HC5340. CANCEMXX XLR 5p->CANCE5FX XLR (f) 5p, L.3m
• UPBOX1U	Firmware uploader kit, USB IN, 3pin XLR DMX OUT, USB OUT

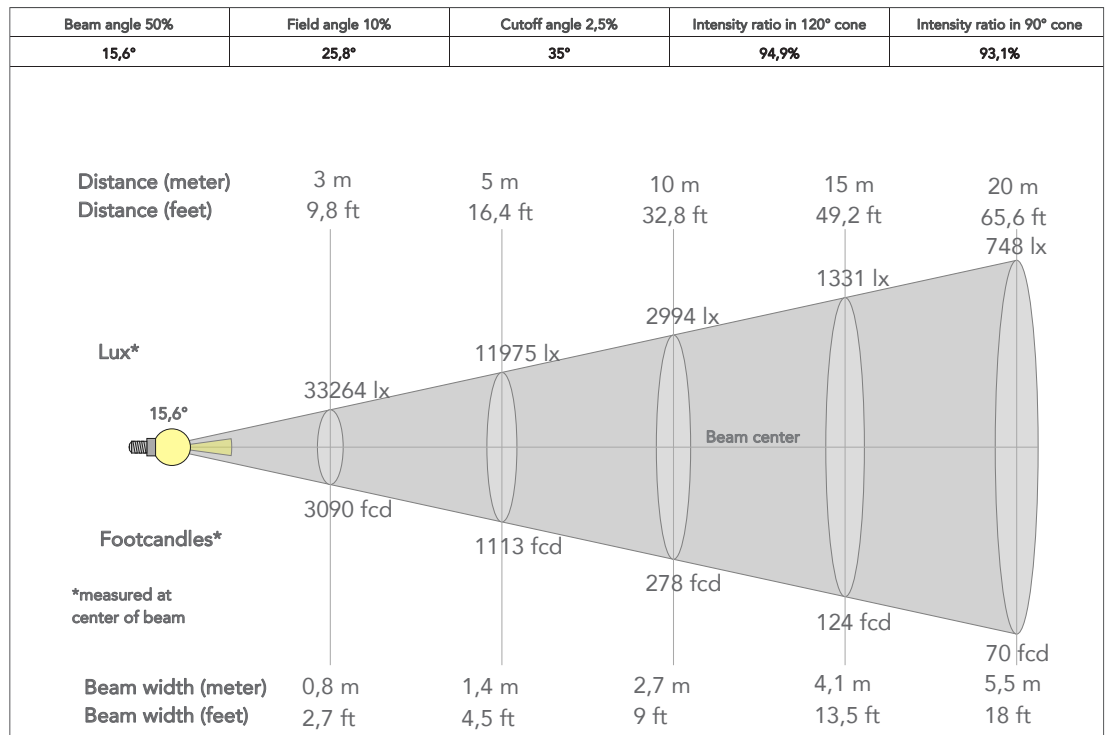
**(TU) PRESET FULL ON**

Beam angle 50%: 15°

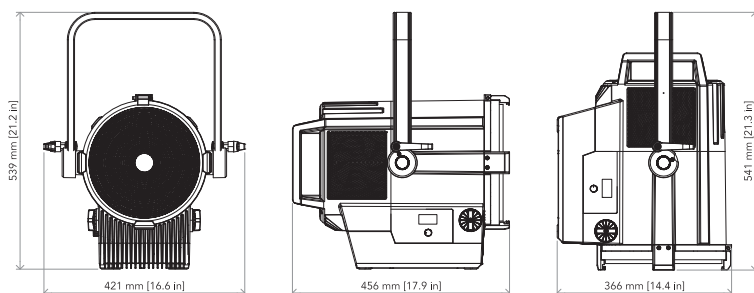


**(DY) PRESET FULL ON**

Beam angle 50%: 15°



**TECHNICAL DRAWINGS**



For more product info and downloads visit our website

